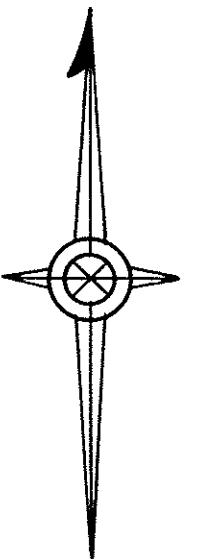


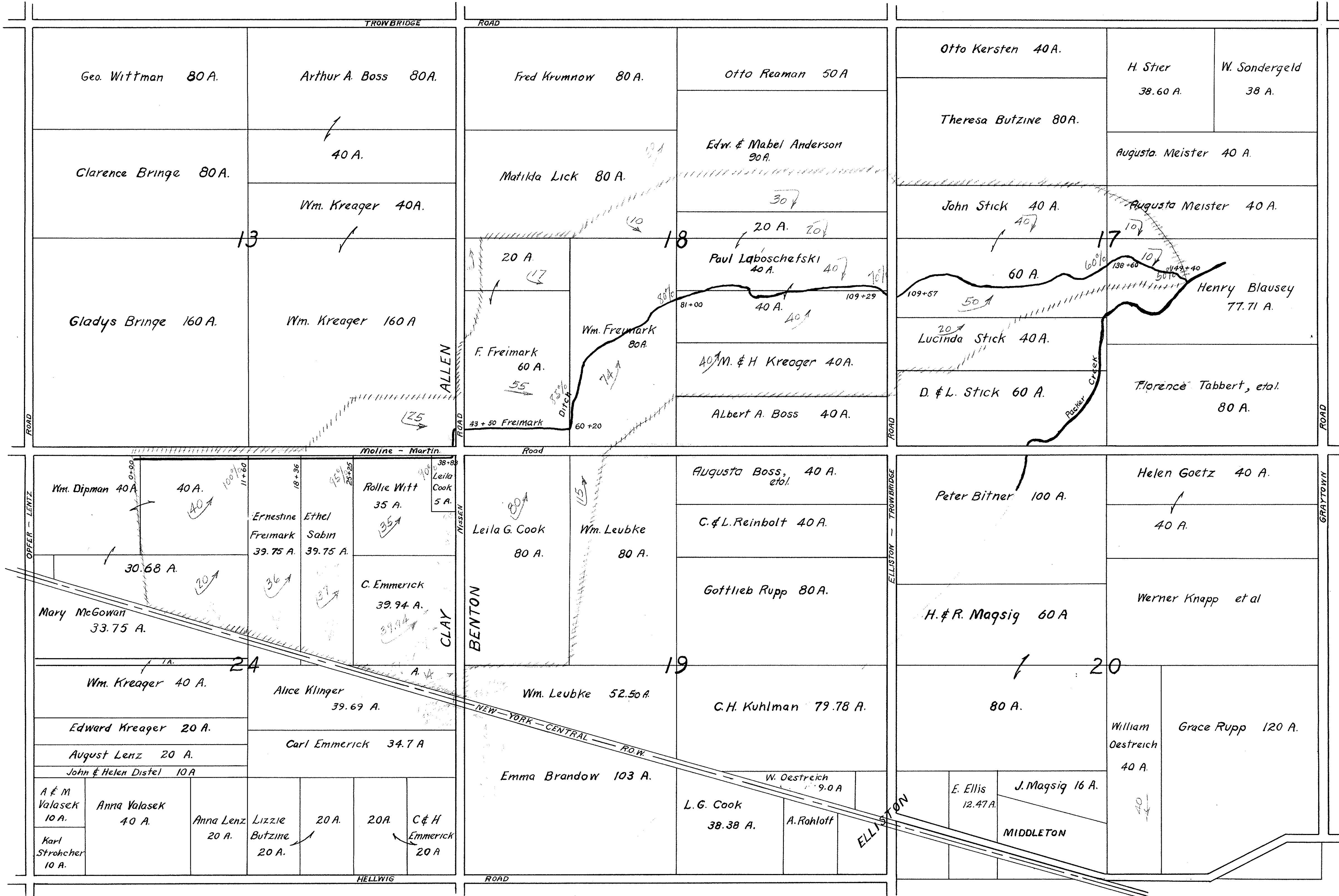
FREIMARK DITCH

ALLEN - BENTON - CLAY TOWNSHIPS

1947



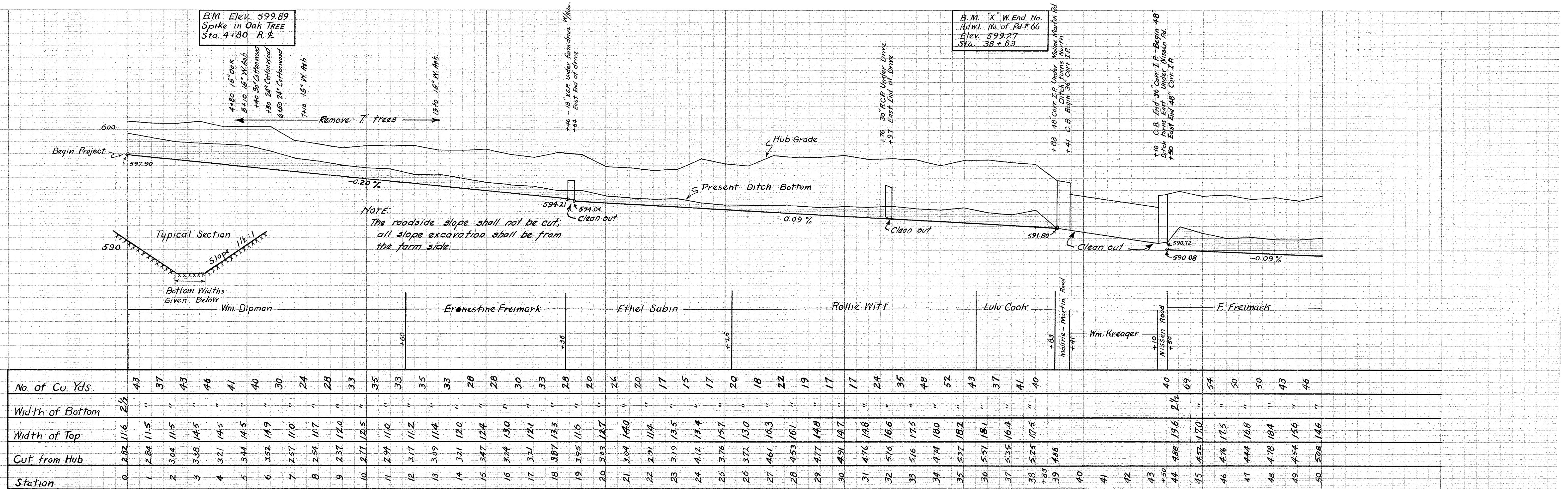
SCALE 1" = 660'



Parcel A: Ralph Klinger - 4 A.

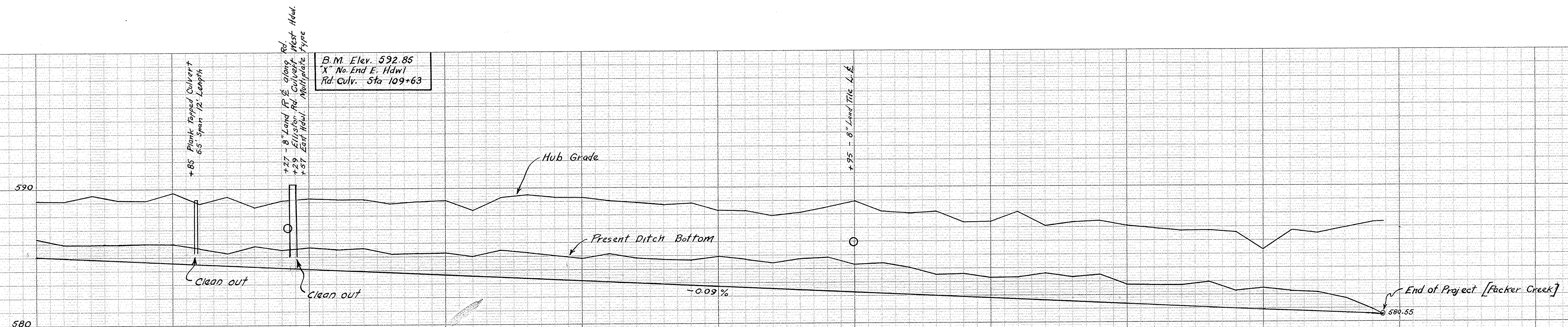
FREIMARK DITCH

1947



No. of Cu. Yds.	43	37	43	46	41	40	30	24	28	33	35	33	35	33	28	28	30	33	28	20	24	20	17	15	17	20	18	22	19	17	17	24	35	48	52	43	37	41	40	40	69	54	50	50	43	46					
Width of Bottom	2 1/2	"	"	"	"	"	"	"	"	"	"	"	"	"	"	"	"	"	"	"	"	"	"	"	"	"	"	"	"	"	"	"	"	"	"	"	"	2 1/2	"	"	"	"	"	"	"	"					
Width of Top	11.6	11.5	11.5	14.5	14.5	14.9	11.0	11.7	12.0	12.5	11.0	11.2	11.4	12.0	12.4	13.0	12.1	12.1	13.3	11.6	12.7	14.0	11.4	13.5	13.4	15.7	13.0	16.3	16.1	14.8	14.7	14.8	16.6	17.5	18.0	18.2	18.1	16.4	17.5	19.6	17.0	17.5	16.8	18.4	15.6	14.6					
Cut from Hub	2.82	2.84	3.04	3.38	3.21	3.44	2.57	2.54	2.37	2.77	2.94	3.17	3.09	3.21	3.87	3.24	3.95	3.03	3.04	2.91	3.19	4.12	3.76	3.72	4.61	4.53	4.77	4.91	4.76	5.16	5.16	4.74	5.37	5.57	5.57	5.57	5.35	5.35	4.88	4.52	4.78	4.44	4.78	4.54	5.08						
Station	0	1	2	3	4	5	6	7	8	9	10	11	12	13	14	15	16	17	18	19	20	21	22	23	24	25	26	27	28	29	30	31	32	33	34	35	36	37	38	39	40	41	42	43	44	45	46	47	48	49	50

FREIMARK DITCH



B.M. Elev. 592.85
"X" No. End E. Hdwl
Rd. Culv. Sta 109+63

+85 Plank Tapped Culvert
6.5' Span 12' Length

+27 - 8" Lead Pipe along Rd.
+29 Ellison Rd. Culvert West Head.
+37 East Head. Multiple Pipe

+95 - 8" Lead Tile 4.6'

Paul Loboschewski

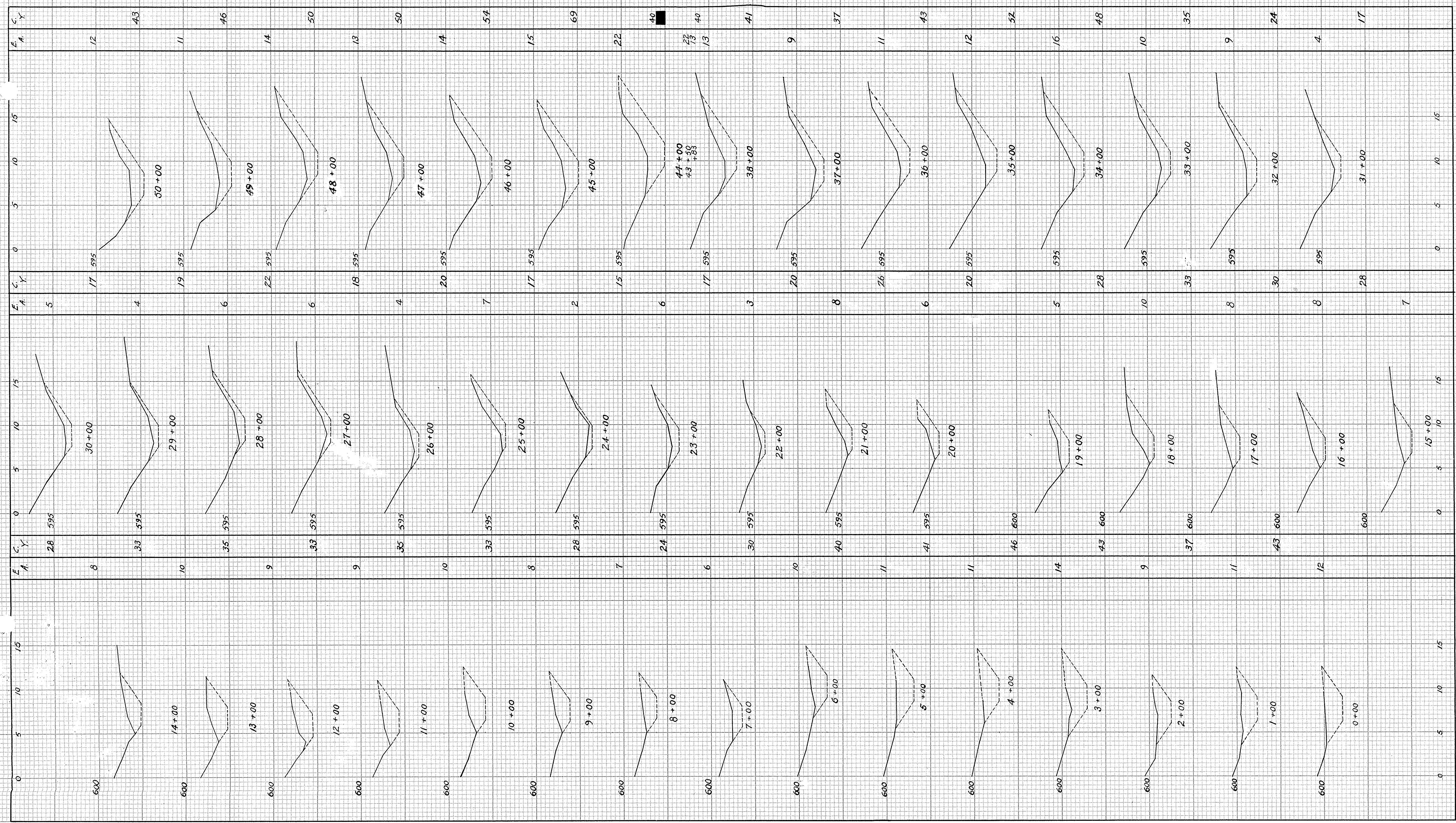
Lucinda Stick

Henry Blausey

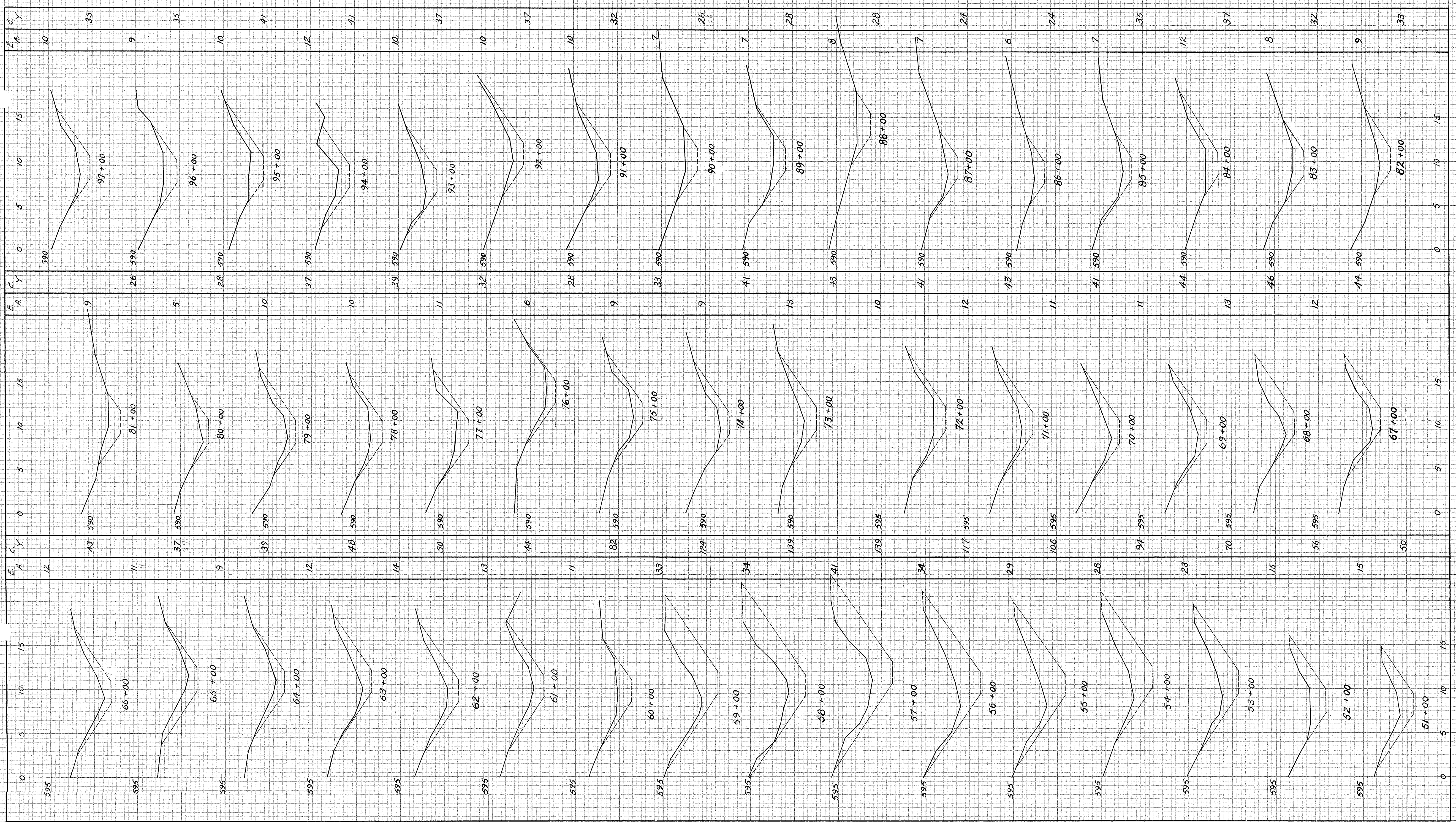
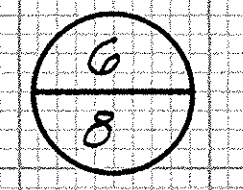
101	4.20	16.5	2 1/2	52	111	5.19	18.0	"	69	121	5.94	19.5	"	91
102	4.73	16.3	"	50	112	5.29	18.2	"	65	122	5.96	20.0	"	87
103	4.44	15.5	"	52	113	5.10	18.5	"	65	123	5.86	19.5	"	82
104	4.54	18.8	"	52	114	5.28	16.0	"	57	124	6.01	19.5	"	93
105	5.14	21.0	"	57	115	5.48	17.5	"	57	125	5.61	19.5	"	80
106	4.42	17.2	"	56	116	4.82	19.0	"	59	126	5.69	21.0	"	61
107	5.03	20.0	"	50	117	5.82	16.0	"	57	127	5.35	18.6	"	56
108	4.34	16.4	"	48	118	6.16	16.5	"	59	128	5.69	18.5	"	54
109	4.95	15.2	"	48	119	6.03	20.5	"	59	129	6.13	21.1	"	54
110	5.21	18.5	"	59	120	6.16	21.0	"	67	130	6.67	18.5	"	57
111	5.19	18.0	"	69	121	5.94	19.5	"	85	131	5.99	15.0	"	61
112	5.29	18.2	"	65	122	5.96	20.0	"	91	132	5.82	15.2	"	56
113	5.10	18.5	"	65	123	5.86	19.5	"	78	133	6.08	17.0	"	54
114	5.28	16.0	"	57	124	6.01	19.5	"	65	134	5.46	22.0	"	54
115	5.48	17.5	"	57	125	5.61	19.5	"	69	135	5.61	17.0	"	57
116	4.82	19.0	"	59	126	5.69	21.0	"	91	136	6.34	17.2	"	61
117	5.82	16.0	"	57	127	5.35	18.6	"	87	137	5.39	19.5	"	72
118	6.16	16.5	"	59	128	5.69	18.5	"	82	138	5.79	20.0	"	69
119	6.03	20.5	"	59	129	6.13	21.1	"	93	139	5.86	17.5	"	59
120	6.16	21.0	"	67	130	6.67	18.5	"	80	140	5.71	18.0	"	59
121	5.94	19.5	"	85	131	5.99	15.0	"	61	141	5.65	20.0	"	69
122	5.96	20.0	"	91	132	5.82	15.2	"	56	142	5.50	18.2	"	70
123	5.86	19.5	"	78	133	6.08	17.0	"	54	143	5.58	20.0	"	56
124	6.01	19.5	"	65	134	5.46	22.0	"	54	144	5.54	19.0	2 1/2	48
125	5.61	19.5	"	69	135	5.61	17.0	"	57	145	4.42	20.0	4	56
126	5.69	21.0	"	91	136	6.34	17.2	"	61	146	3.85	25.5	"	74
127	5.35	18.6	"	87	137	5.39	19.5	"	72	147	5.76	21.0	"	82
128	5.69	18.5	"	82	138	5.79	20.0	"	69	148	6.31	22.0	"	69
129	6.13	21.1	"	93	139	5.86	17.5	"	59	149	6.67	25.4	"	65
130	6.67	18.5	"	80	140	5.71	18.0	"	59	++0				15
131	5.99	15.0	"	61	141	5.65	20.0	"	69	Total No. of Cu.	166	7192		
132	5.82	15.2	"	56	142	5.50	18.2	"	70					
133	6.08	17.0	"	54	143	5.58	20.0	"	56					
134	5.46	22.0	"	54	144	5.54	19.0	2 1/2	48					
135	5.61	17.0	"	57	145	4.42	20.0	4	56					
136	6.34	17.2	"	61	146	3.85	25.5	"	74					
137	5.39	19.5	"	72	147	5.76	21.0	"	82					
138	5.79	20.0	"	69	148	6.31	22.0	"	69					
139	5.86	17.5	"	59	149	6.67	25.4	"	65					
140	5.71	18.0	"	59	++0				15					

FREIMARK DITCH

5
8

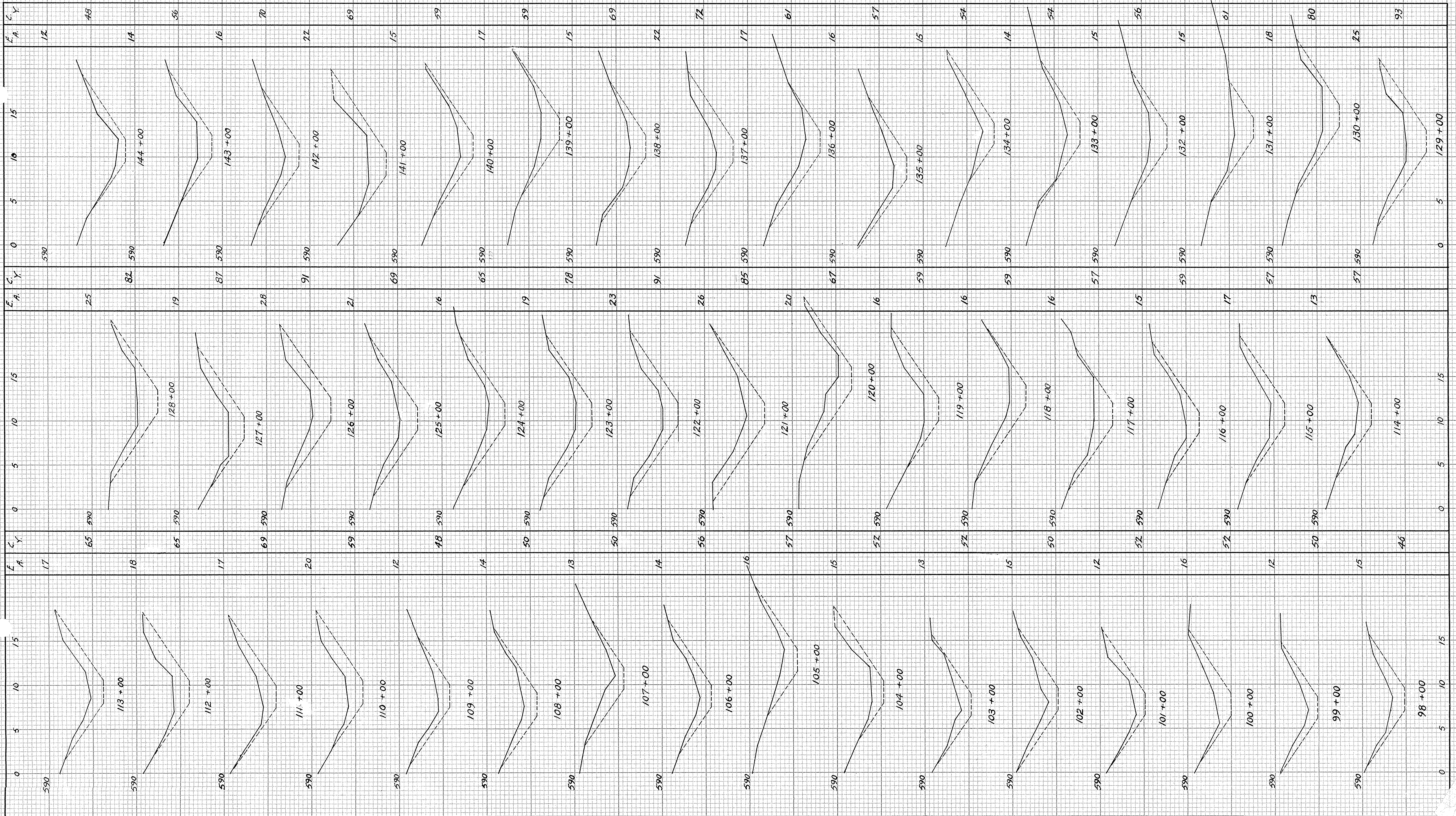


FREIMARK DITCH



FREIMARK DITCH

7
8



FREIMARK DITCH

8
8

