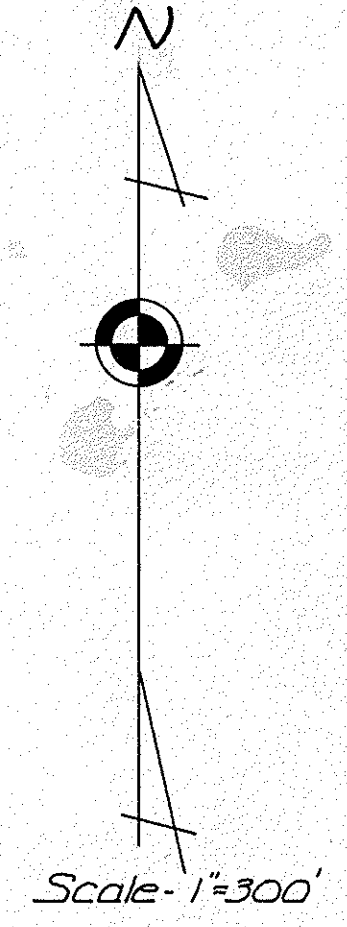
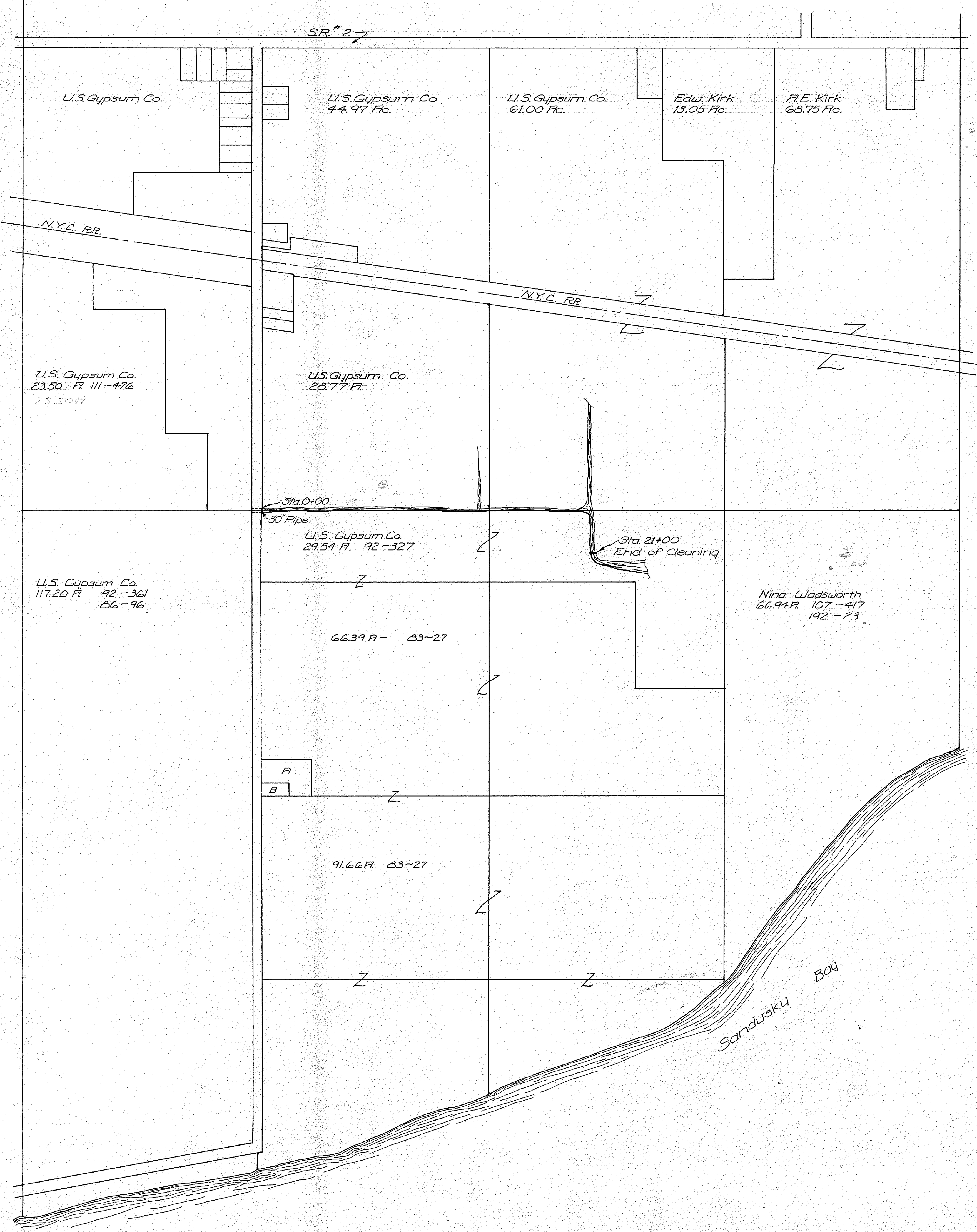


DWELLE DITCH BRANCH PORTAGE TWP. SEC. 2 & 11 1959



SEC.	PAR.	INDEX TO SMALL PARCELS	AC.	VOL.	PG.
NW	A	Sam Neff	.58	131	199
	B	Michael & Lorraine Demshak	.47	131	204
	C				
	D				
	E				

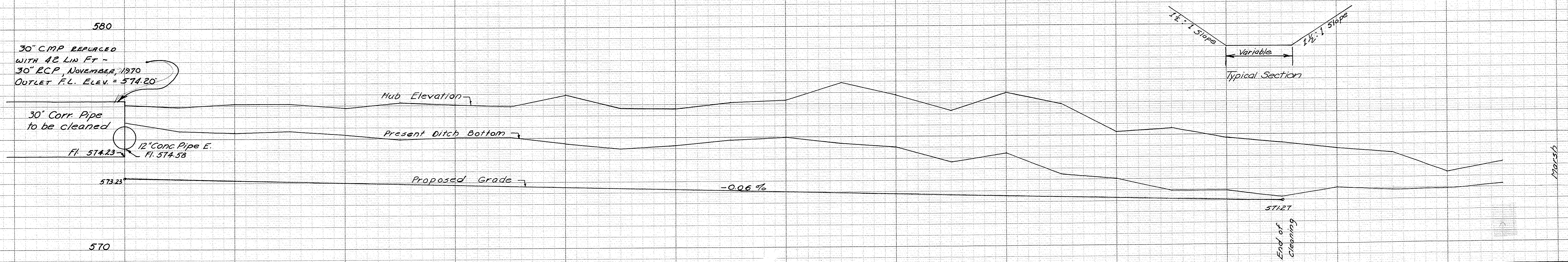
DWELLE DITCH BRANCH PORTAGE TWP 1959

B.M. 120' N. Sta. 0+00
Spike Po. Pole
Elev. 578.81

B.M. Sta. 7+40
NW Cor. Angle Iron Tower #1378
2.9' Above ground Elev. 579.72

B.M. Sta. 14+80
NW Cor. Angle Iron Tower #1377
2.9' Above ground Elev. 578.85

Ditch Book 138 Pg. 15



Width of Top	5	8	10	11	11	13	13	13	12	14	13	12	11	10	11	10	9	8	10	16	17	18	22	23	24	25
Width of Bottom	5	4	6	9	9	10	10	11	10	12	11	10	8	7	8	7	6	6	14	15	16	16	20	21	16	23
Cut from Hub	3.33	3.32	3.49	3.55	3.41	3.72	3.66	3.62	4.23	3.65	3.70	4.03	4.16	4.51	3.85	4.72	4.22	2.99	3.42	2.84	2.65	2.65	2.3	2.4	2.5	2.5
Station	0	1	2	3	4	5	6	7	8	9	10	11	12	13	14	15	16	17	18	19	20	21	22	23	24	25

