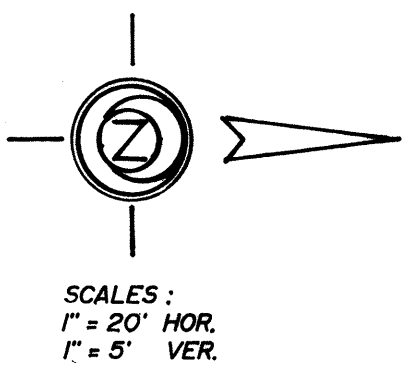
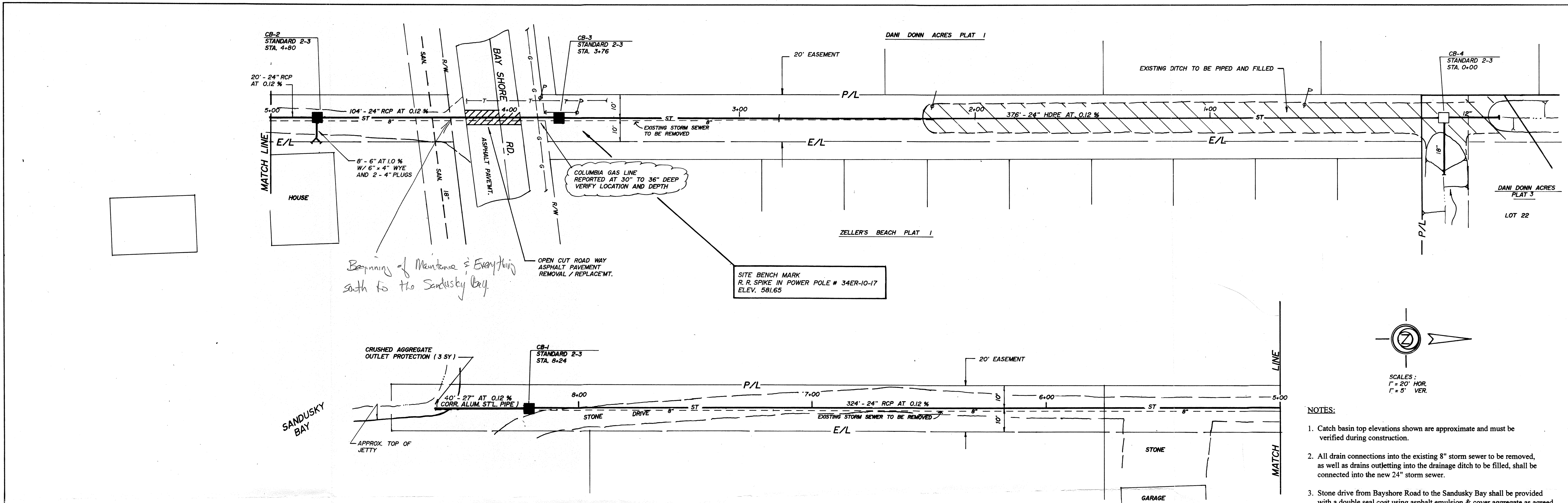


PLAN	SURVEYED	DATE
	PLOTTED	BY
	GRADES CHECKED	
	ALIGNMENT CHECKED	
	STRUCTURE NOTATIONS CHECKED	
NOTE BOOK NO.		

PROFILE	SURVEYED	DATE
	PLOTTED	BY
	GRADES CHECKED	
	ALIGNMENT CHECKED	
	STRUCTURE NOTATIONS CHECKED	
NOTE BOOK NO.		



- NOTES:
- Catch basin top elevations shown are approximate and must be verified during construction.
 - All drain connections into the existing 8" storm sewer to be removed, as well as drains outletting into the drainage ditch to be filled, shall be connected into the new 24" storm sewer.
 - Stone drive from Bayshore Road to the Sandusky Bay shall be provided with a double seal coat using asphalt emulsion & cover aggregate as agreed.

