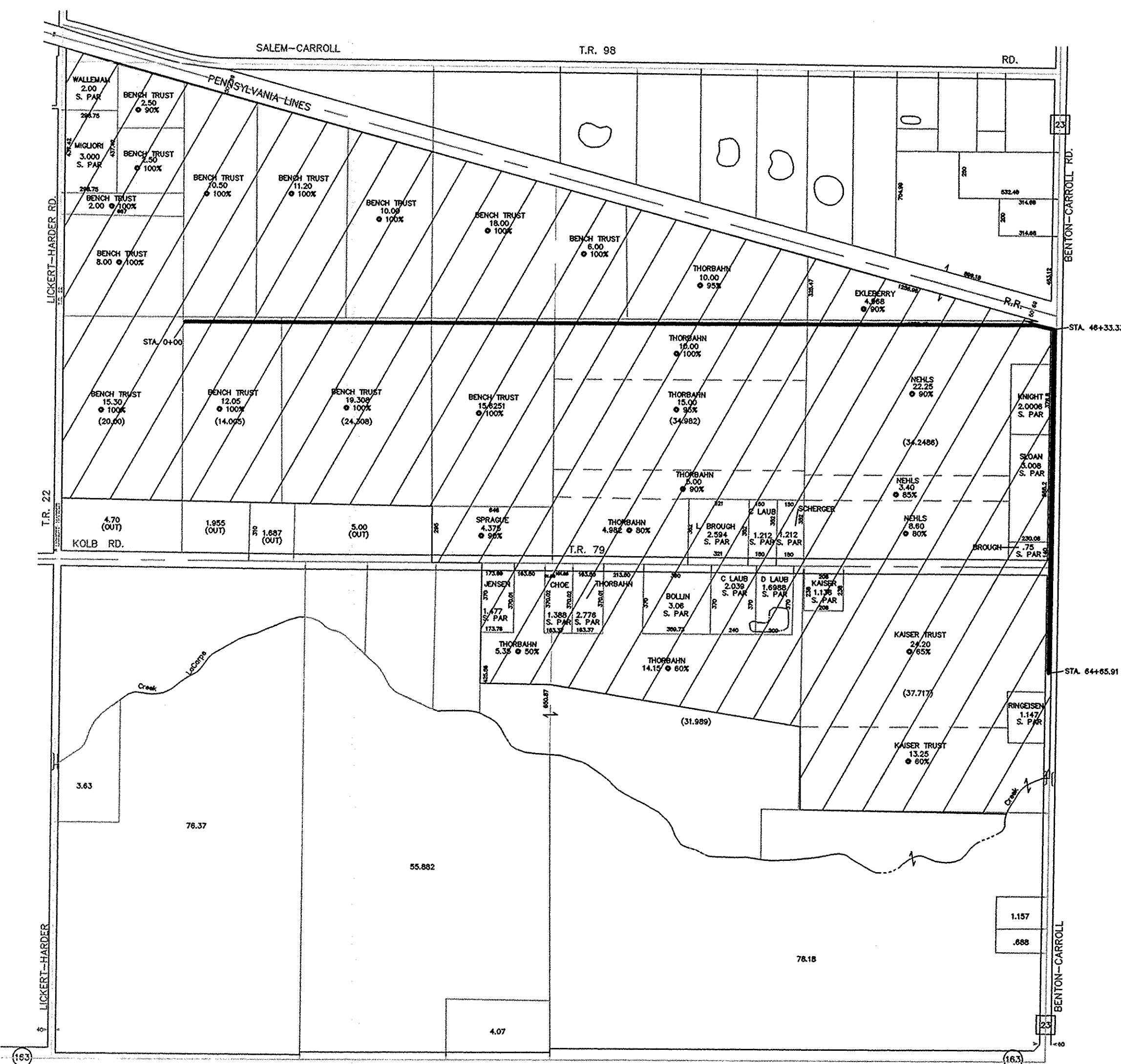
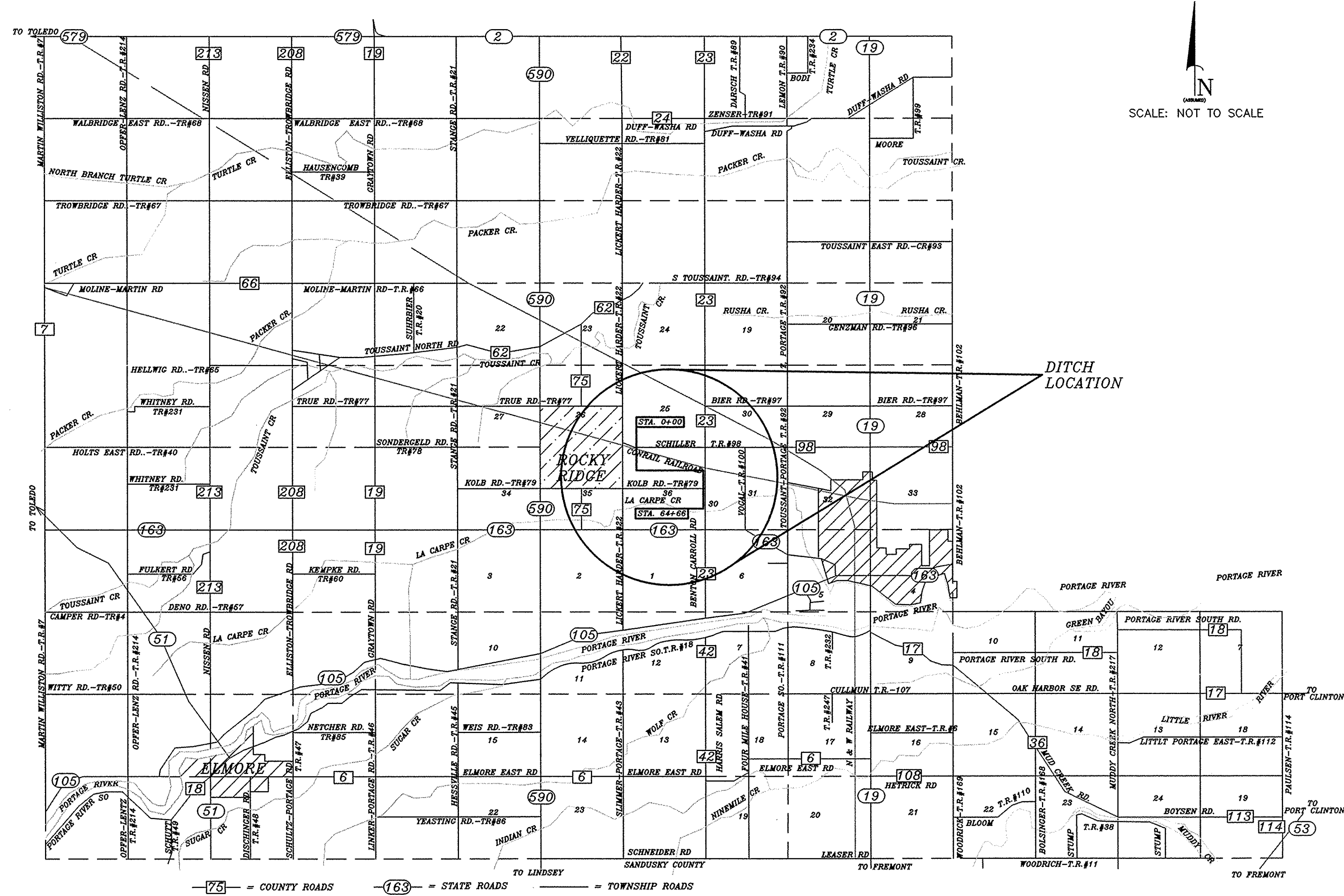


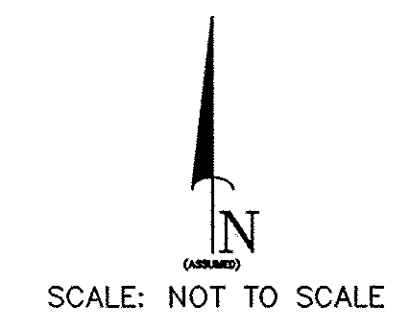
# C. BREUTKREITZ DITCH #105 RECONSTRUCTION IN SECTION 36, T7N-R14E, BENTON TWP. OTTAWA COUNTY, OHIO 2008



DRAINAGE AREA MAP



LOCATION PLAN



### GENERAL NOTES

1. ANY CHANGES TO THESE PLANS, MUST BE APPROVED BY THE OTTAWA COUNTY ENGINEER.
2. ANY BARRICADES, LIGHTS, ETC. THAT MAY BE NEEDED ON THIS JOB, ARE THE SOLE RESPONSIBILITY OF THE CONTRACTOR, AND SHALL BE INCLUDED IN THE FINAL BID.
3. ANY EXTRAS SHALL BE MADE AT THE UNIT BID PRICE AND APPROVED BY THE COUNTY ENGINEER.
4. ANY COLLARS THAT MAY BE NEEDED TO CONNECT THE EXISTING TILE TO NEW TILE, SHALL BE INCLUDED IN UNIT PRICE BID FOR PIPE.
5. ALL DITCH CHECKS SHALL CONFORM TO ODOT STANDARD DRAWING DM-4.4.
6. ALL EXTRA DIRT FROM LAWN AREAS WILL BE TRUCKED AWAY.
7. CONTRACTOR TO DIG DITCH FROM BOTH SIDES.

### SPECIFICATIONS:

ALL WORK SHALL CONFORM TO THE STATE OF OHIO, DEPARTMENT OF TRANSPORTATION, CONSTRUCTION & MATERIAL SPECIFICATIONS DATED JANUARY 1, 2005 AND ANY SUPPLEMENTS THERE TO IN EFFECT FOURTEEN (14) CALENDAR DAYS PRIOR TO THE RECEIVING OF BIDS, UNLESS OTHERWISE NOTED OR EXCEPTED.

### APPROVALS:

WE THE BOARD OF COMMISSIONERS OF OTTAWA COUNTY HEREBY APPROVE THESE PLANS. THE 14<sup>TH</sup> DAY OF March 2008.

*James Egan* *Carl J. Jurek* *M. J. Smith*

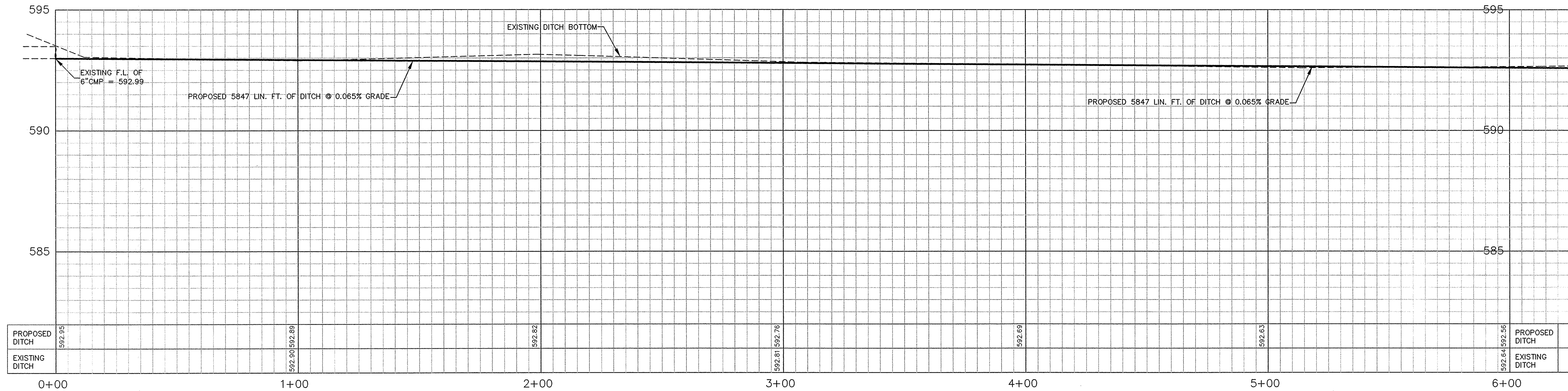
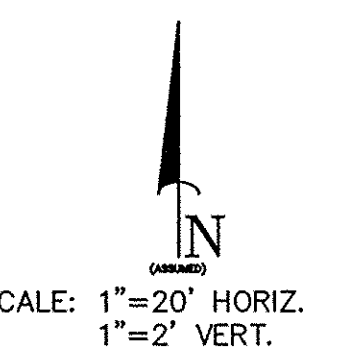
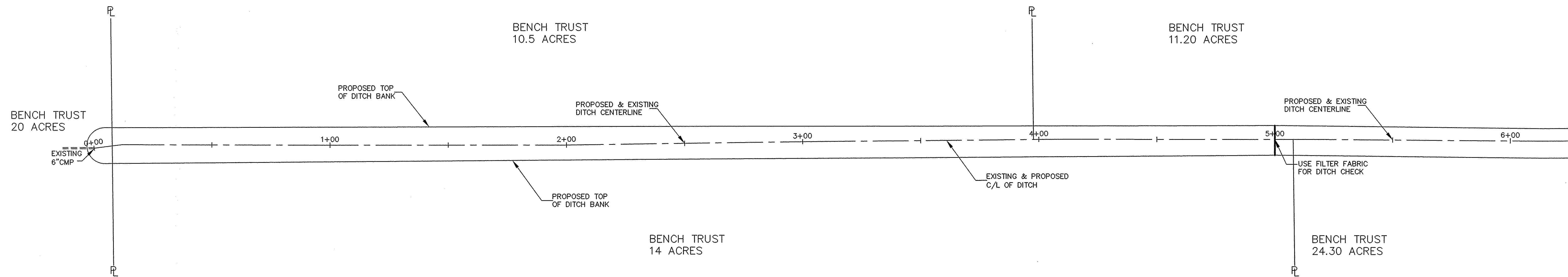
I HEREBY APPROVE THESE PLANS THE 14<sup>TH</sup> DAY OF March 2008.

*David Albert Brunkhorst*  
OTTAWA COUNTY ENGINEER

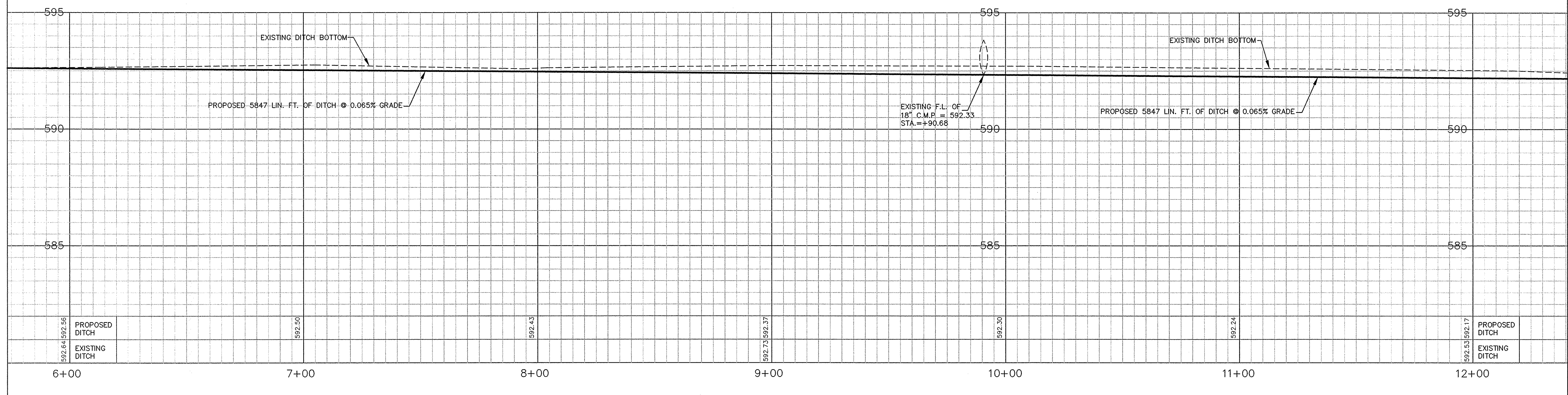
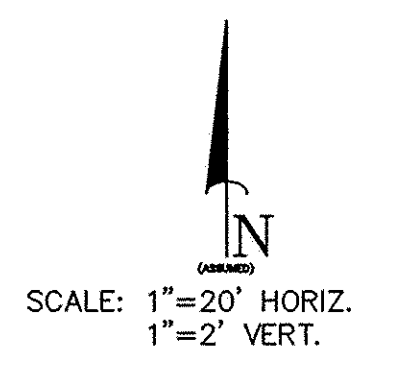
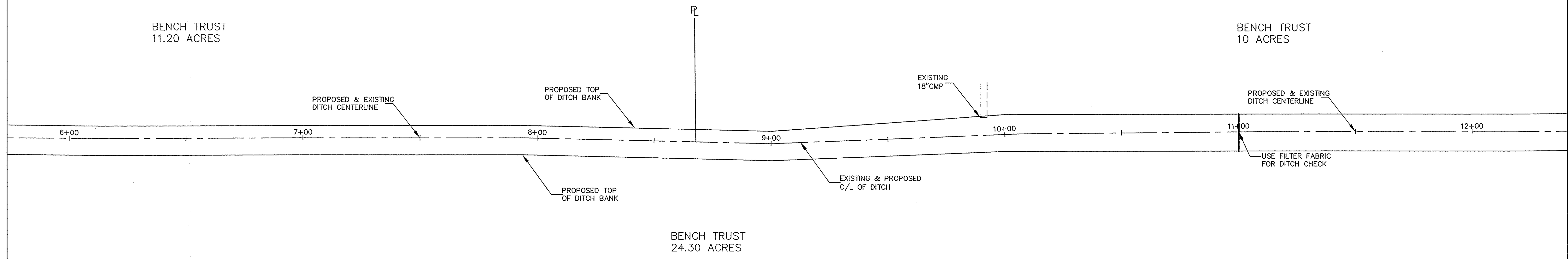


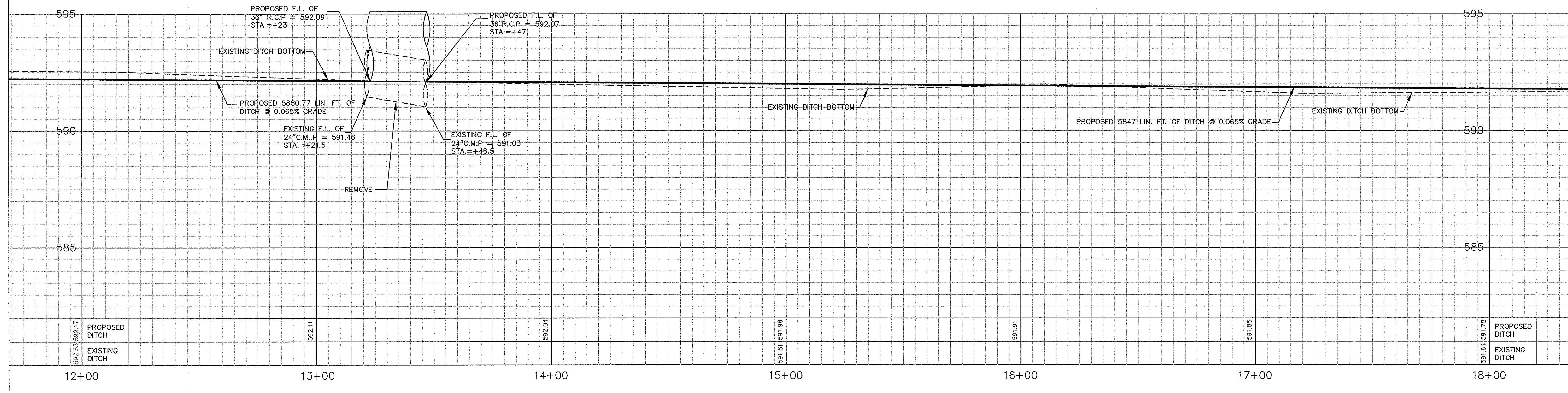
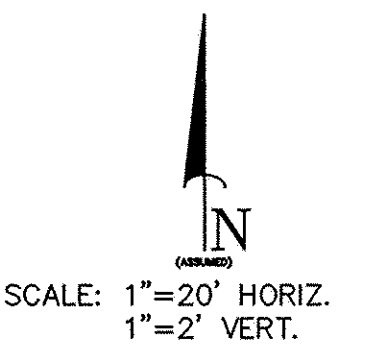
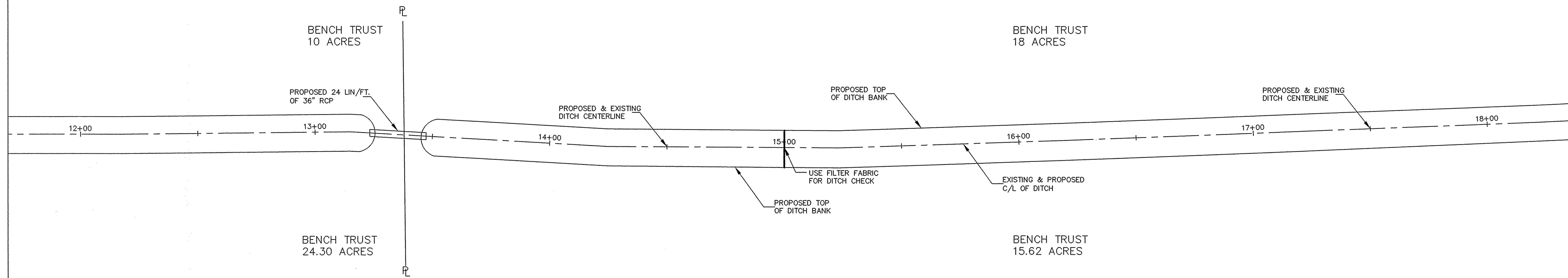
### INDEX TO SHEETS:

- SHEET 1--- LOCATION PLAN, DRAINAGE AREA PLAN, GENERAL NOTES AND SPECIFICATIONS.
- SHEET 2 TO 12----- TYPICAL SECTIONS, DETAILS.
- SHEET 13 TO 14----- CROSS SECTIONS
- SHEET 15----- TYPICAL SECTIONS, DETAILS.



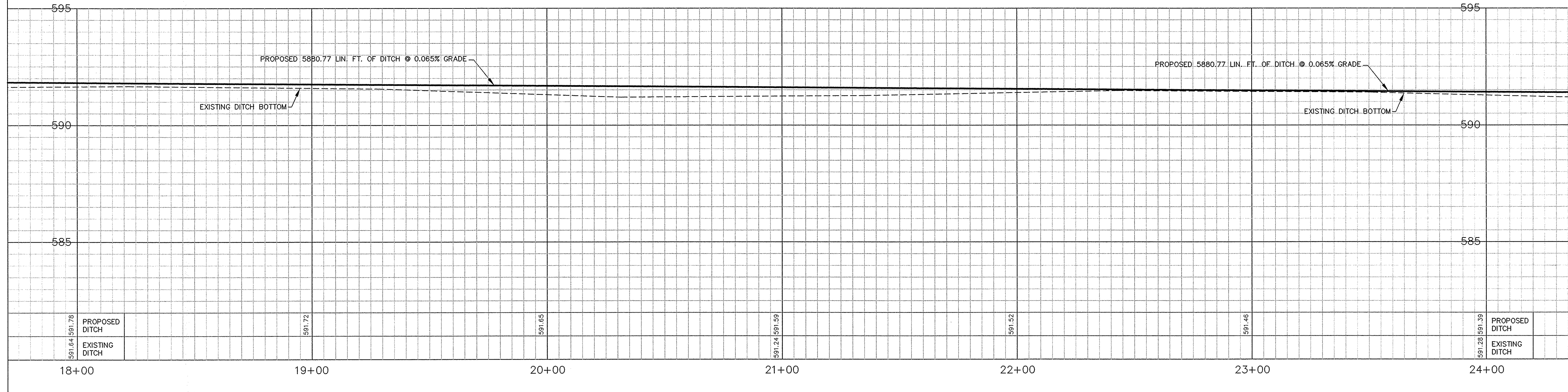
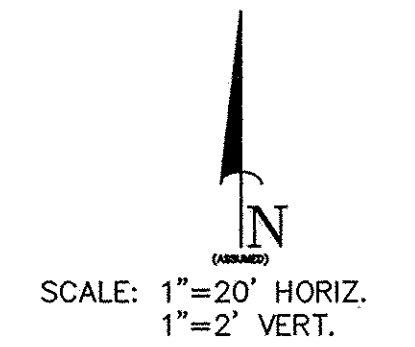
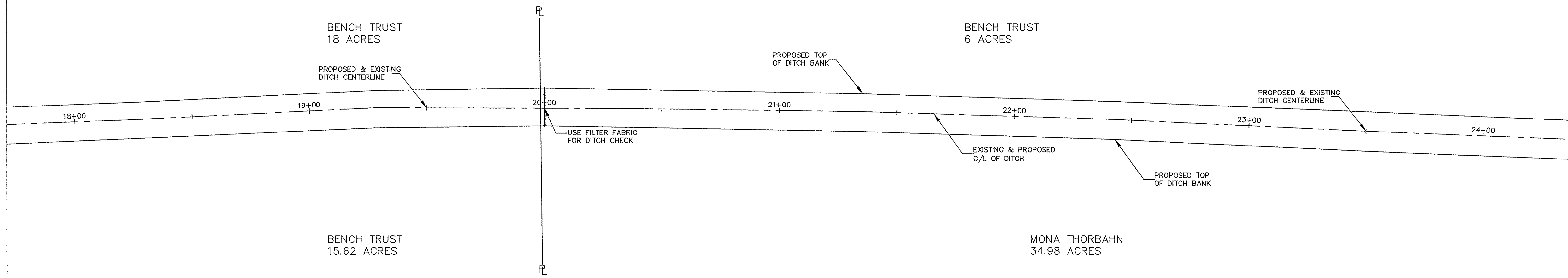


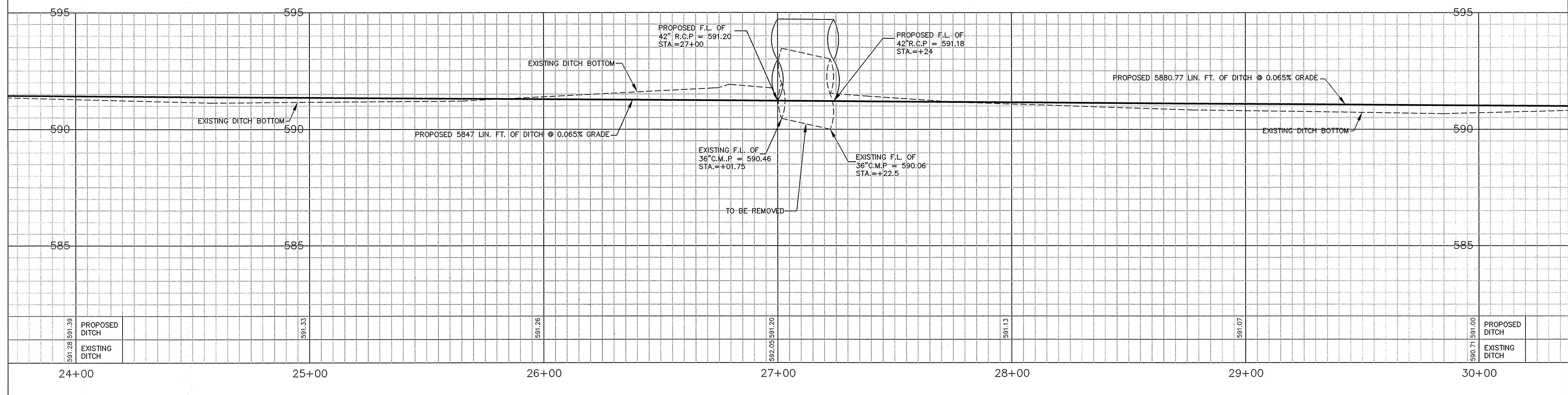
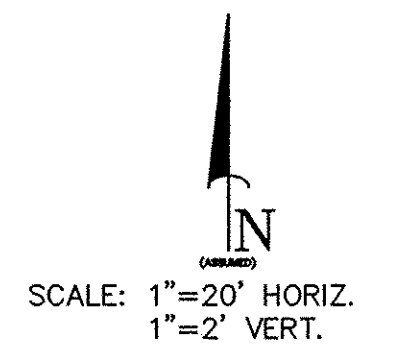
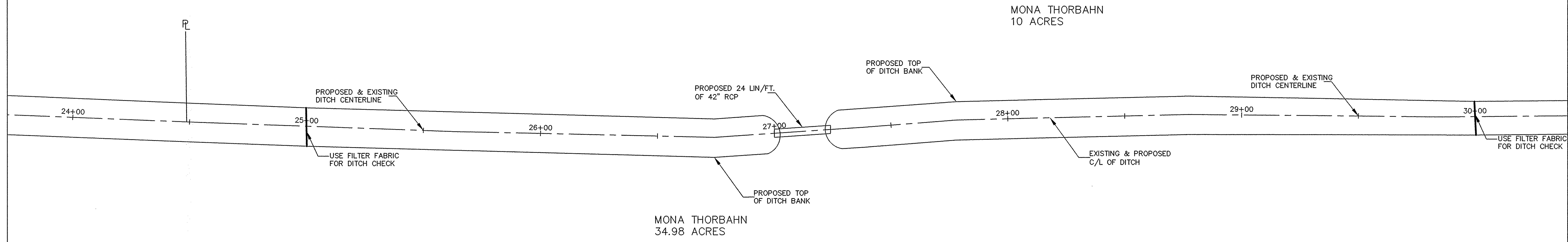




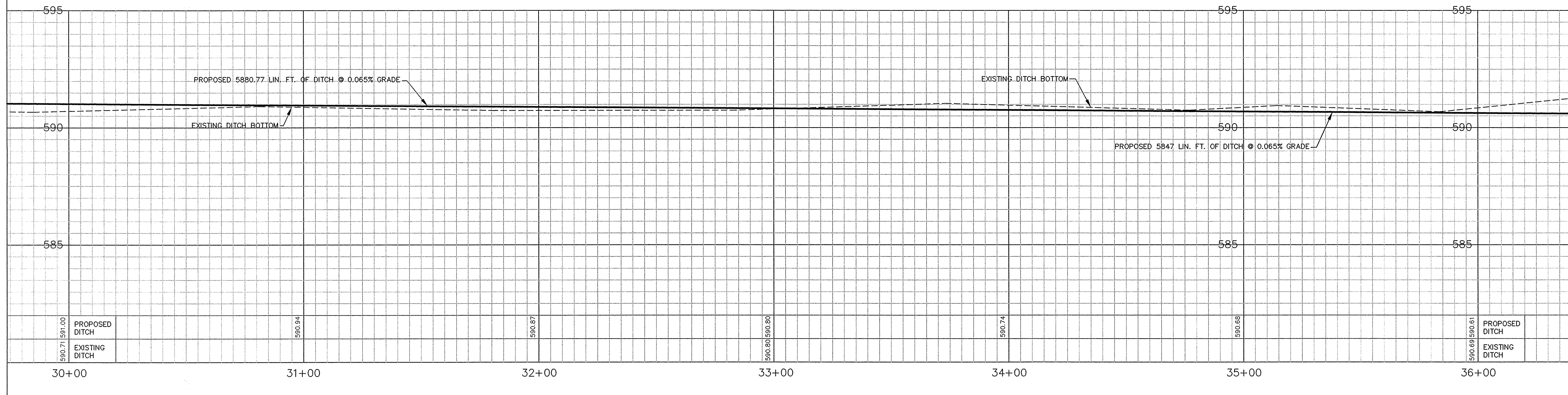
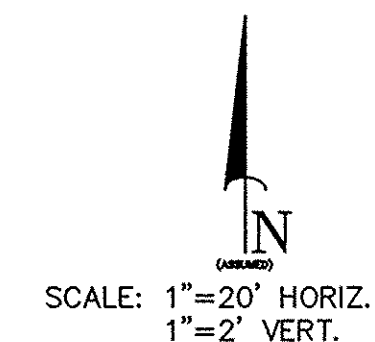
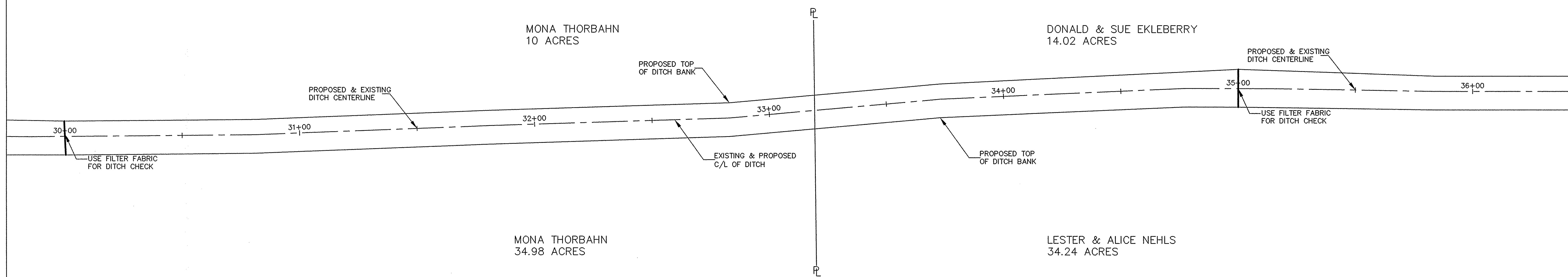
592.53	592.17	PROPOSED DITCH	592.11	592.04	591.98	591.91	591.85	591.64	591.78	PROPOSED DITCH
592.53	592.17	EXISTING DITCH	592.11	592.04	591.98	591.91	591.85	591.64	591.78	EXISTING DITCH
12+00	13+00		14+00	15+00	16+00	17+00	18+00			

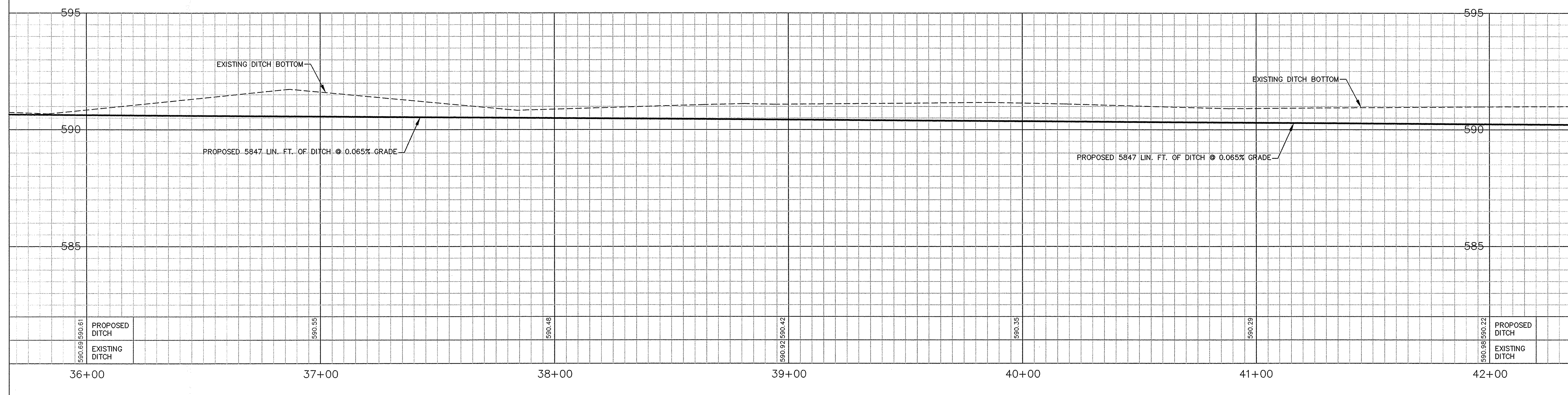
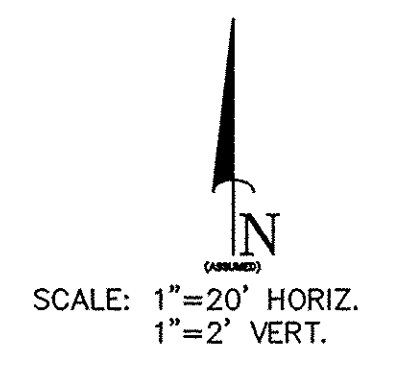
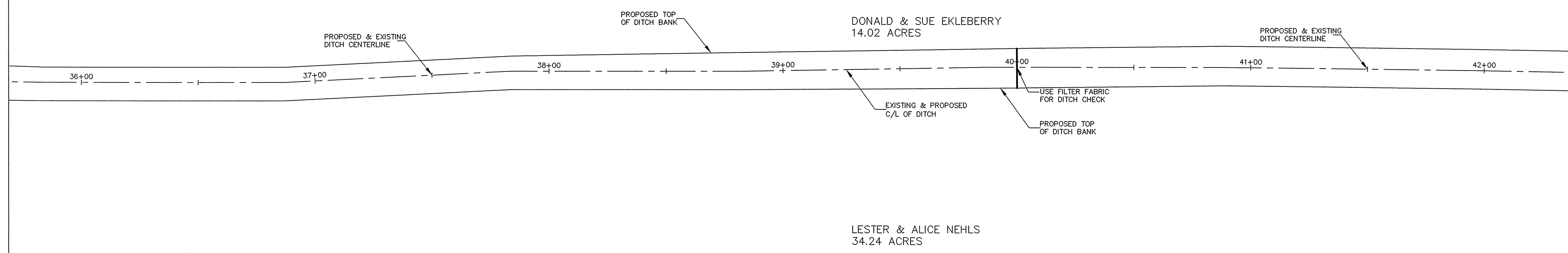




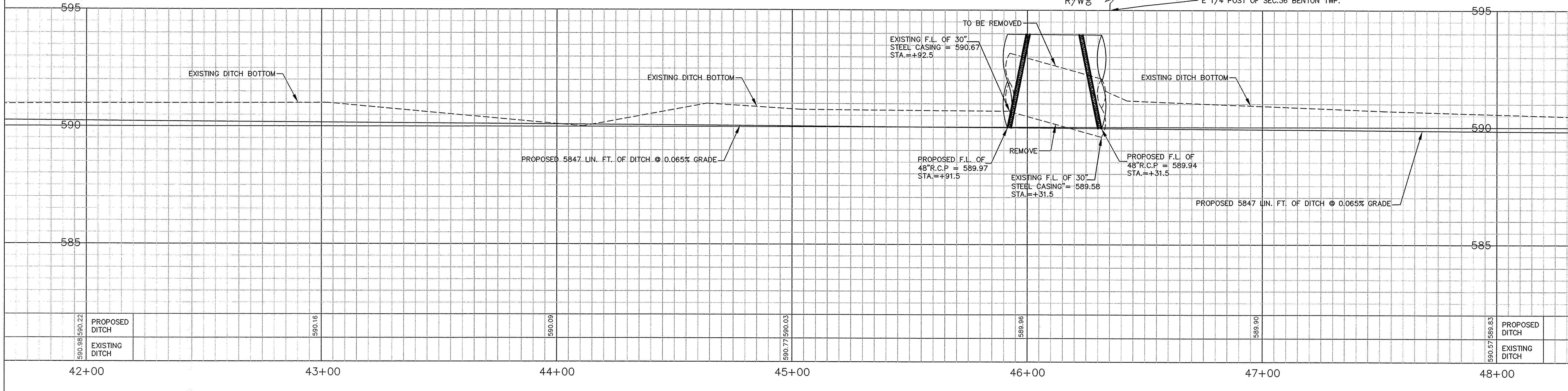
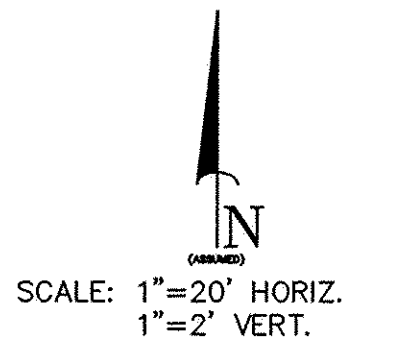
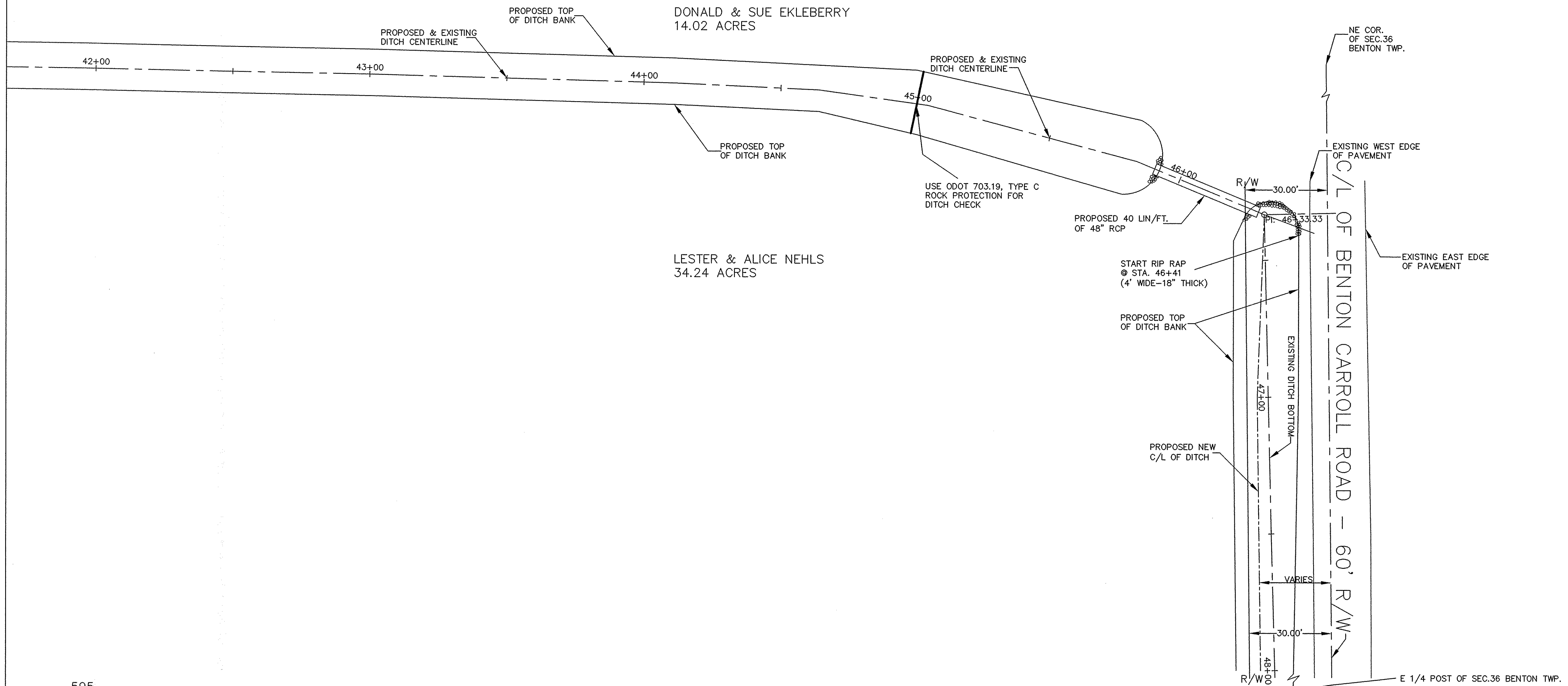






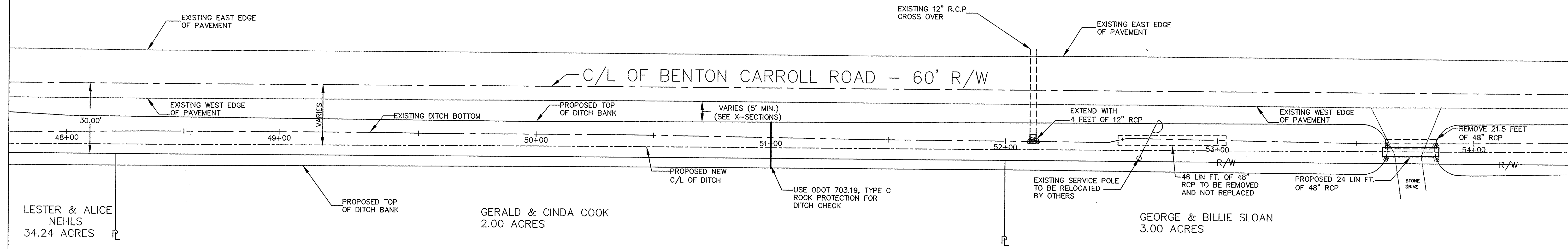






590.98	590.22	PROPOSED DITCH		590.16		590.09		590.77	590.03		590.96		589.90		590.57	589.83	PROPOSED DITCH
590.98	590.22	EXISTING DITCH		590.16		590.09		590.77	590.03		590.96		589.90		590.57	589.83	EXISTING DITCH
42+00				43+00		44+00		45+00		46+00		47+00		48+00			

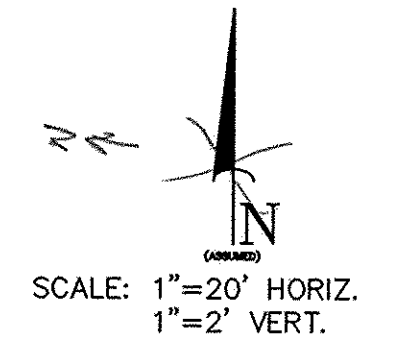




LESTER & ALICE NEHLS  
34.24 ACRES

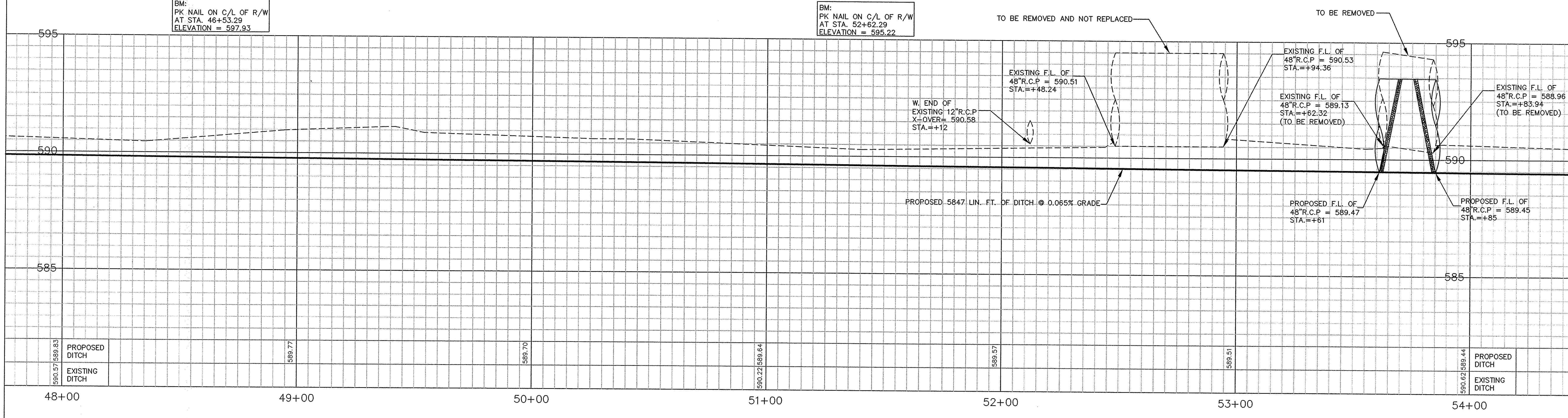
GERALD & CINDA COOK  
2.00 ACRES

GEORGE & BILLIE SLOAN  
3.00 ACRES



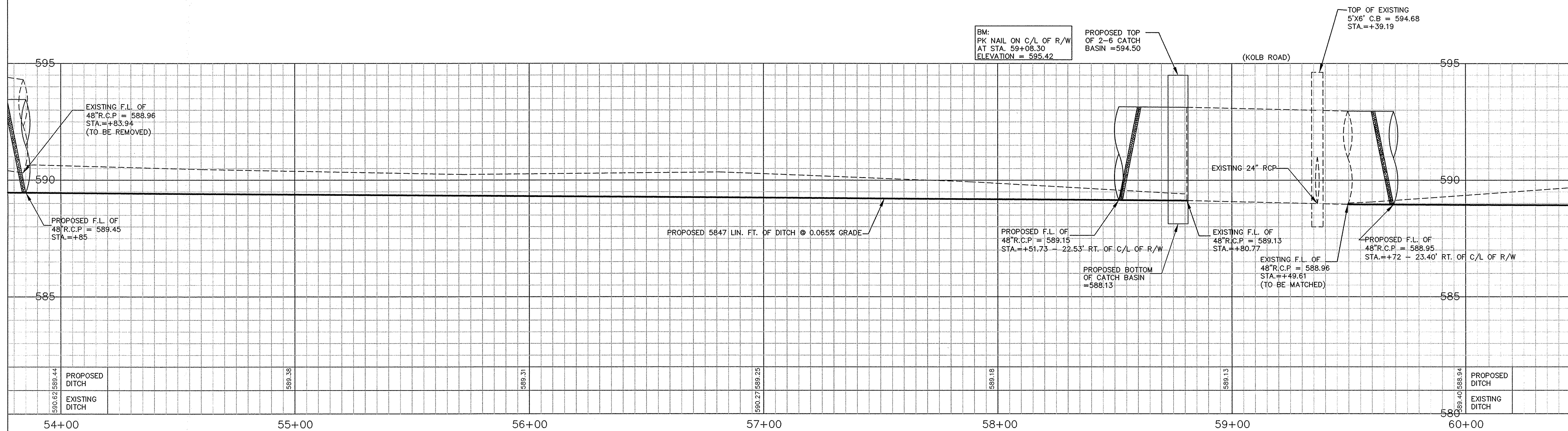
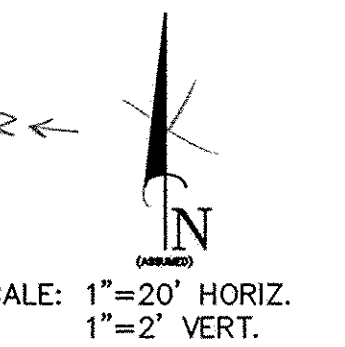
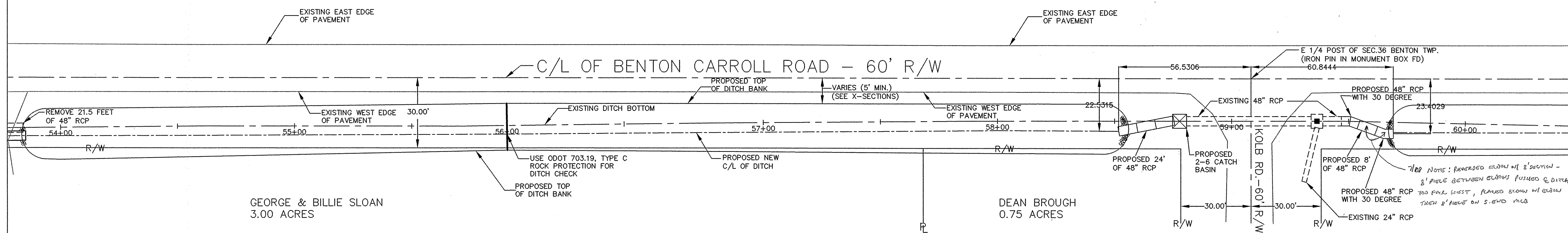
BM:  
PK NAIL ON C/L OF R/W  
AT STA. 46+53.29  
ELEVATION = 597.93

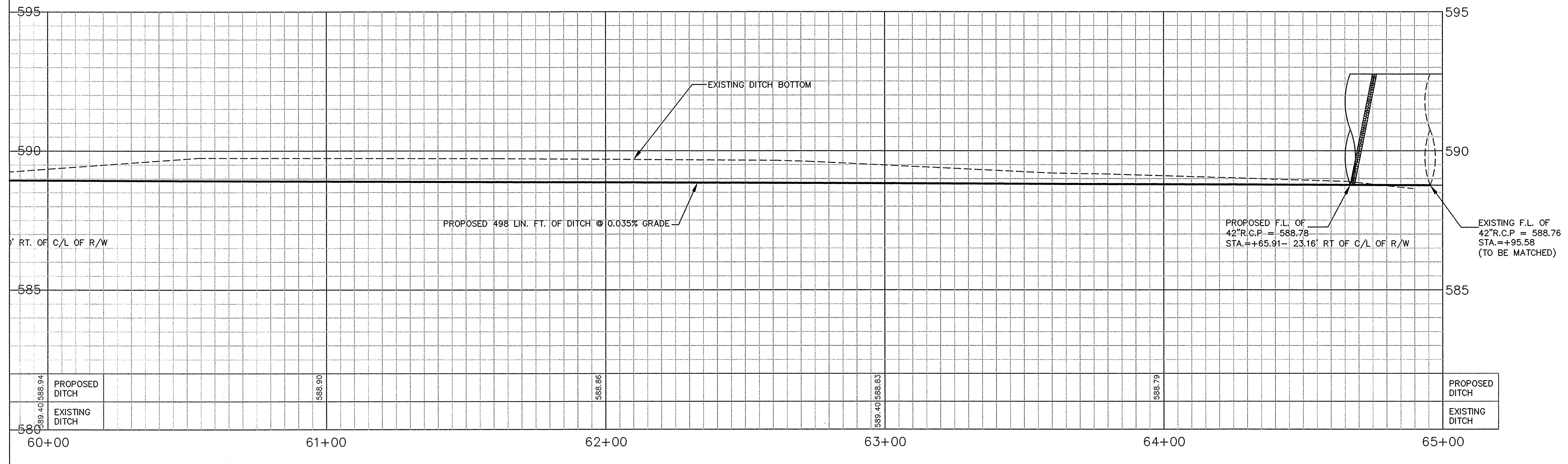
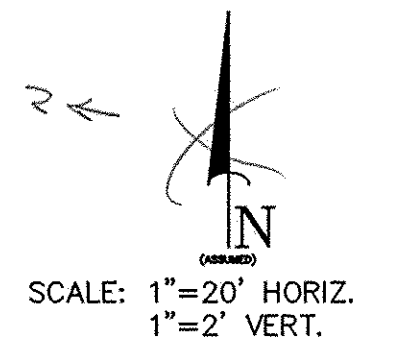
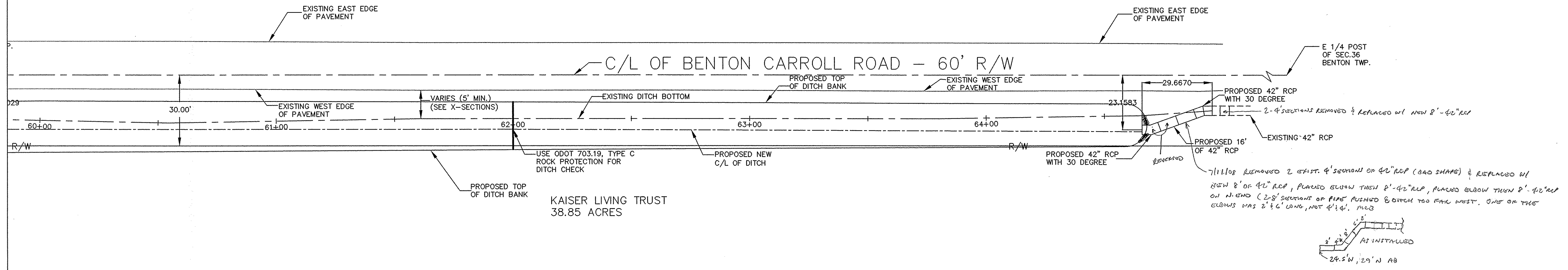
BM:  
PK NAIL ON C/L OF R/W  
AT STA. 52+62.29  
ELEVATION = 595.22



590.57	589.83	589.77	589.70	590.22	589.64	589.57	589.51	590.62	589.44
PROPOSED DITCH	EXISTING DITCH							PROPOSED DITCH	EXISTING DITCH
48+00	49+00	50+00	51+00	52+00	53+00	54+00			









**NOTE: DITCH TURNS @ STA = 48+66**

STATION	C(ft <sup>3</sup> )	F(ft <sup>3</sup> )	C(yd <sup>3</sup> )	F(yd <sup>3</sup> )
46+66 to 46+31.5	24.15	24.15	30.85	

STATION	C(ft <sup>3</sup> )	F(ft <sup>3</sup> )	C(yd <sup>3</sup> )	F(yd <sup>3</sup> )
45+91.5 to 45+00	24.15	24.15	81.84	

STATION	C(ft <sup>3</sup> )	F(ft <sup>3</sup> )	C(yd <sup>3</sup> )	F(yd <sup>3</sup> )
45+00 to 40+00	24.15	12.99	343.89	

STATION	C(ft <sup>3</sup> )	F(ft <sup>3</sup> )	C(yd <sup>3</sup> )	F(yd <sup>3</sup> )
40+00 to 35+00	12.99	7.62	190.83	

STATION	C(ft <sup>3</sup> )	F(ft <sup>3</sup> )	C(yd <sup>3</sup> )	F(yd <sup>3</sup> )
35+00 to 30+00	7.62	1.43	83.80	

STATION	C(ft <sup>3</sup> )	F(ft <sup>3</sup> )	C(yd <sup>3</sup> )	F(yd <sup>3</sup> )
30+00 to 25+00	1.43	2.78	38.98	

STATION	C(ft <sup>3</sup> )	F(ft <sup>3</sup> )	C(yd <sup>3</sup> )	F(yd <sup>3</sup> )
25+00 to 20+00	2.78	4.33	65.83	

STATION	C(ft <sup>3</sup> )	F(ft <sup>3</sup> )	C(yd <sup>3</sup> )	F(yd <sup>3</sup> )
20+00 to 15+00	4.33	1.94	58.06	

STATION	C(ft <sup>3</sup> )	F(ft <sup>3</sup> )	C(yd <sup>3</sup> )	F(yd <sup>3</sup> )
15+00 to 10+00	1.94	9.12	102.41	

STATION	C(ft <sup>3</sup> )	F(ft <sup>3</sup> )	C(yd <sup>3</sup> )	F(yd <sup>3</sup> )
10+00 to 5+00	9.12	2.59	108.43	

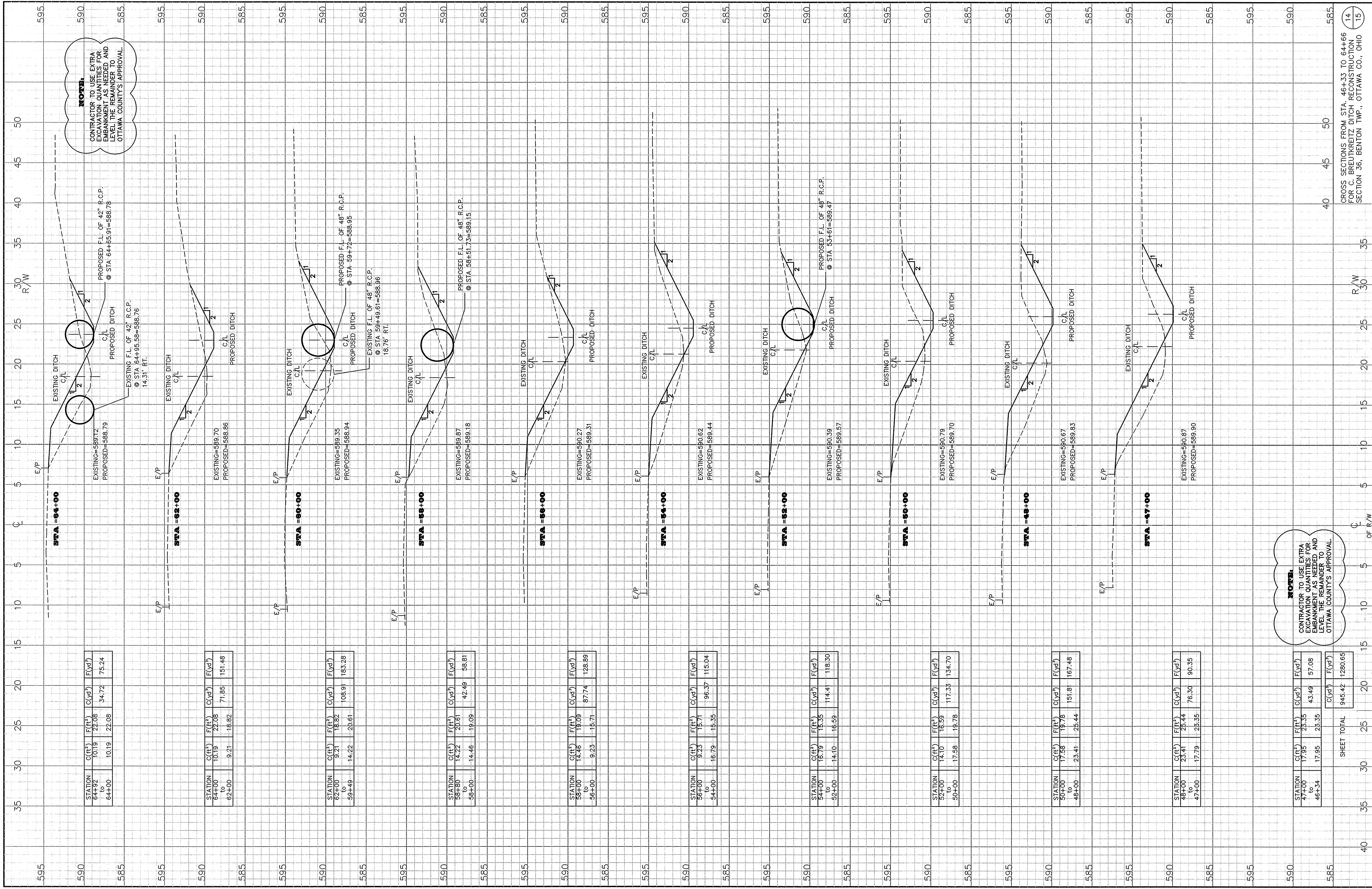
STATION	C(ft <sup>3</sup> )	F(ft <sup>3</sup> )	C(yd <sup>3</sup> )	F(yd <sup>3</sup> )
5+00 to 0+00	2.59	9.52	112.13	

STATION	C(yd <sup>3</sup> )	F(yd <sup>3</sup> )
PAGE TOTAL	1217.05	0.00

**NOTE:**  
CONTRACTOR TO USE EXTRA  
EXCAVATION QUANTITIES FOR  
EMBANKMENT AS NEEDED AND  
LEVEL THE REMAINDER TO  
OTTAWA COUNTY'S APPROVAL.

**NOTE:**  
CONTRACTOR TO USE EXTRA  
EXCAVATION QUANTITIES FOR  
EMBANKMENT AS NEEDED AND  
LEVEL THE REMAINDER TO  
OTTAWA COUNTY'S APPROVAL.





STATION	C(ft <sup>3</sup> )	F(ft <sup>3</sup> )	C(yd <sup>3</sup> )	F(yd <sup>3</sup> )
64+92 to 64+00	10.19	22.08	34.72	75.24

STATION	C(ft <sup>3</sup> )	F(ft <sup>3</sup> )	C(yd <sup>3</sup> )	F(yd <sup>3</sup> )
64+00 to 62+00	10.19	22.08	71.85	151.48
	-9.21	-18.82		

STATION	C(ft <sup>3</sup> )	F(ft <sup>3</sup> )	C(yd <sup>3</sup> )	F(yd <sup>3</sup> )
62+00 to 59+49	9.21	18.82	108.91	183.28
	-14.22	-20.61		

STATION	C(ft <sup>3</sup> )	F(ft <sup>3</sup> )	C(yd <sup>3</sup> )	F(yd <sup>3</sup> )
59+00 to 58+00	14.22	20.61	42.49	58.81
	-14.46	-19.09		

STATION	C(ft <sup>3</sup> )	F(ft <sup>3</sup> )	C(yd <sup>3</sup> )	F(yd <sup>3</sup> )
58+00 to 56+00	14.46	19.09	87.74	128.89
	-9.23	-15.71		

STATION	C(ft <sup>3</sup> )	F(ft <sup>3</sup> )	C(yd <sup>3</sup> )	F(yd <sup>3</sup> )
56+00 to 54+00	9.23	15.71	96.37	115.04
	-16.79	-15.35		

STATION	C(ft <sup>3</sup> )	F(ft <sup>3</sup> )	C(yd <sup>3</sup> )	F(yd <sup>3</sup> )
54+00 to 52+00	16.79	15.35	114.41	118.30
	-14.10	-16.59		

STATION	C(ft <sup>3</sup> )	F(ft <sup>3</sup> )	C(yd <sup>3</sup> )	F(yd <sup>3</sup> )
52+00 to 50+00	14.10	16.59	117.33	134.70
	-17.58	-19.78		

STATION	C(ft <sup>3</sup> )	F(ft <sup>3</sup> )	C(yd <sup>3</sup> )	F(yd <sup>3</sup> )
50+00 to 48+34	17.58	19.78	151.81	167.48
	-23.41	-25.44		

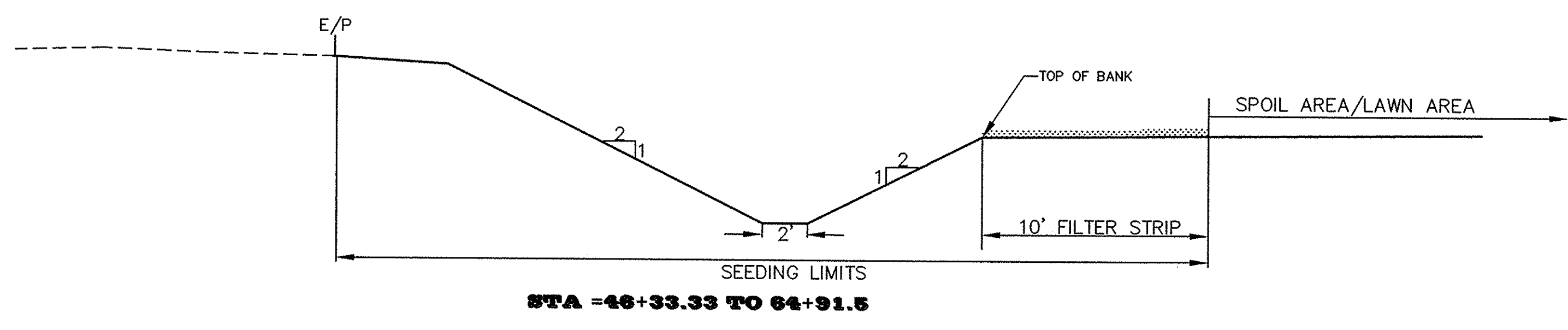
STATION	C(ft <sup>3</sup> )	F(ft <sup>3</sup> )	C(yd <sup>3</sup> )	F(yd <sup>3</sup> )
48+00 to 47+00	23.41	25.44	76.30	90.35
	-17.79	-25.35		

STATION	C(ft <sup>3</sup> )	F(ft <sup>3</sup> )	C(yd <sup>3</sup> )	F(yd <sup>3</sup> )
47+00 to 46+34	17.79	25.35	43.48	57.08
	-17.95	-25.35		
SHEET TOTAL				1280.65

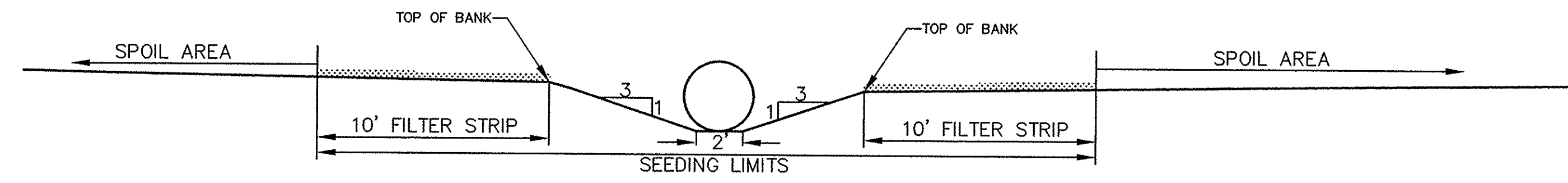
**NOTES**  
 CONTRACTOR TO USE EXTRA EXCAVATION QUANTITIES FOR EXISTING DITCH RECONSTRUCTION AND LEVEL THE REMAINDER TO OTTAWA COUNTY'S APPROVAL

**NOTES**  
 CONTRACTOR TO USE EXTRA EXCAVATION QUANTITIES FOR EXISTING DITCH RECONSTRUCTION AND LEVEL THE REMAINDER TO OTTAWA COUNTY'S APPROVAL

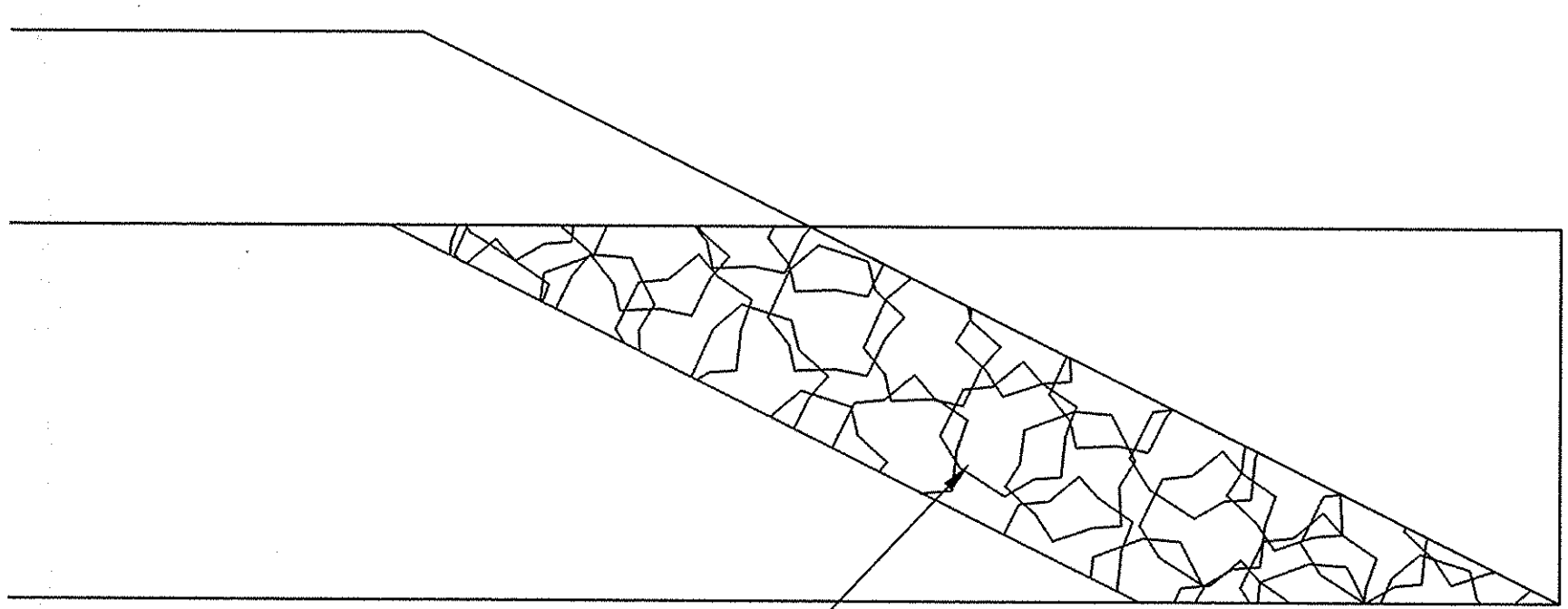




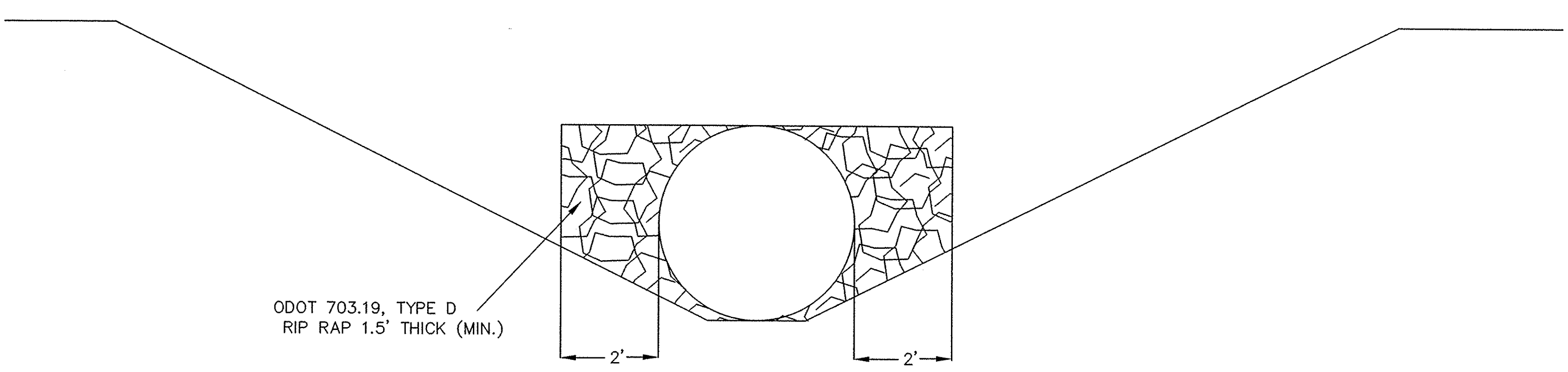
**STA 46+33.33 TO 64+91.5**  
**TYPICAL SECTION**  
 NOT TO SCALE



**STA 0+00 TO 45+91.5**  
**TYPICAL SECTION**  
 NOT TO SCALE



ODOT 703.19, TYPE D  
 RIP RAP 1.5' THICK (MIN.)



ODOT 703.19, TYPE D  
 RIP RAP 1.5' THICK (MIN.)

**RIP RAP DETAIL FOR PIPES**  
 (TO BE USED @ STATIONS 45+91.50, 46+31.5, 53+61, 53+85, 58+51.73, 59+72 AND 64+65.91) NOT TO SCALE