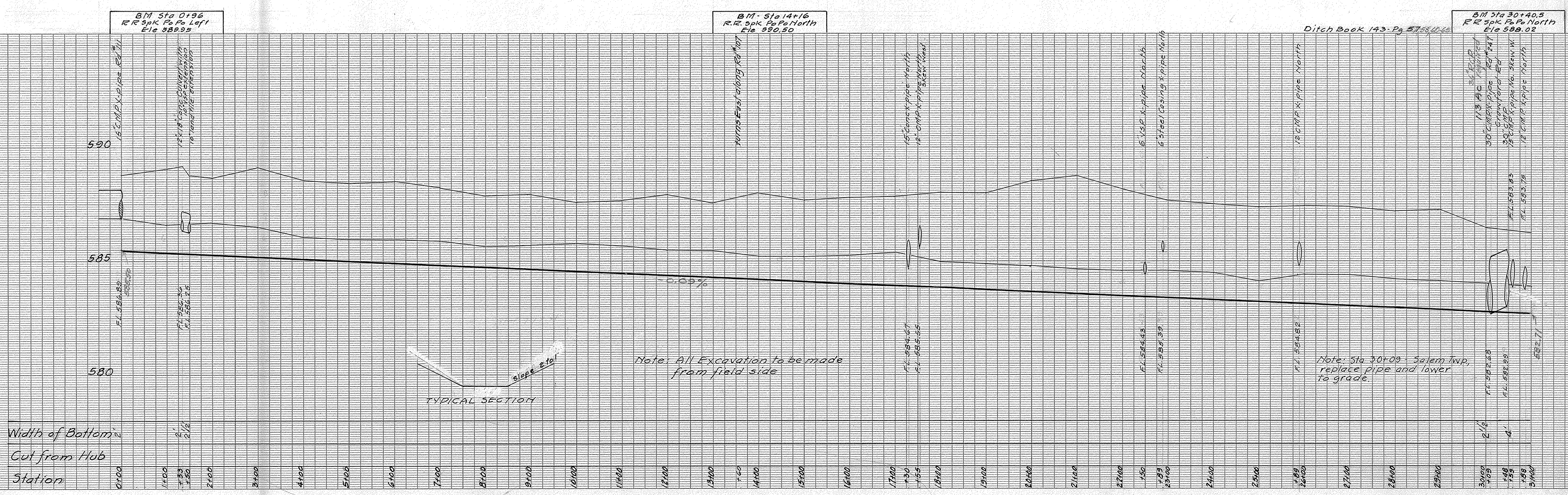


BREDEHOFT DITCH SALEM TWP. SEC. 8, 17, 18 ~ ~ ~ 1973 ~ ~ ~

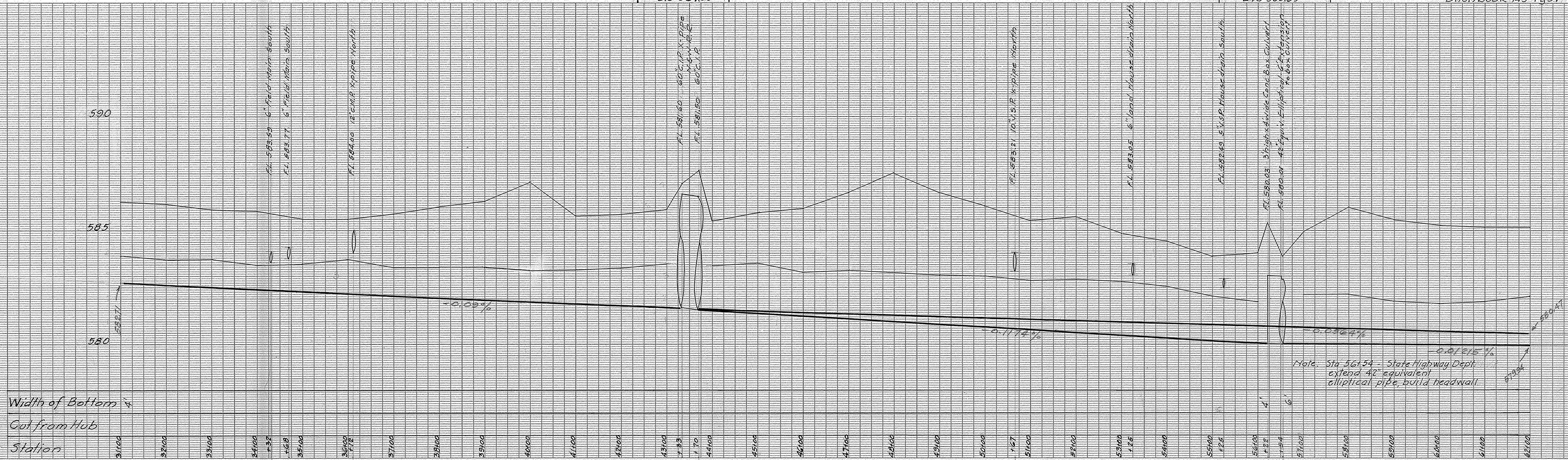


BREDEHOFT DITCH SALEM TWP. SEC. 7, 8, 17, 18 -----1973-----

BM Sta 43+33
"X" Top Center C.I.P.
Ele 587.05

BM Sta 56+22
"X" Top Conc. Headwall
Ele 585.89

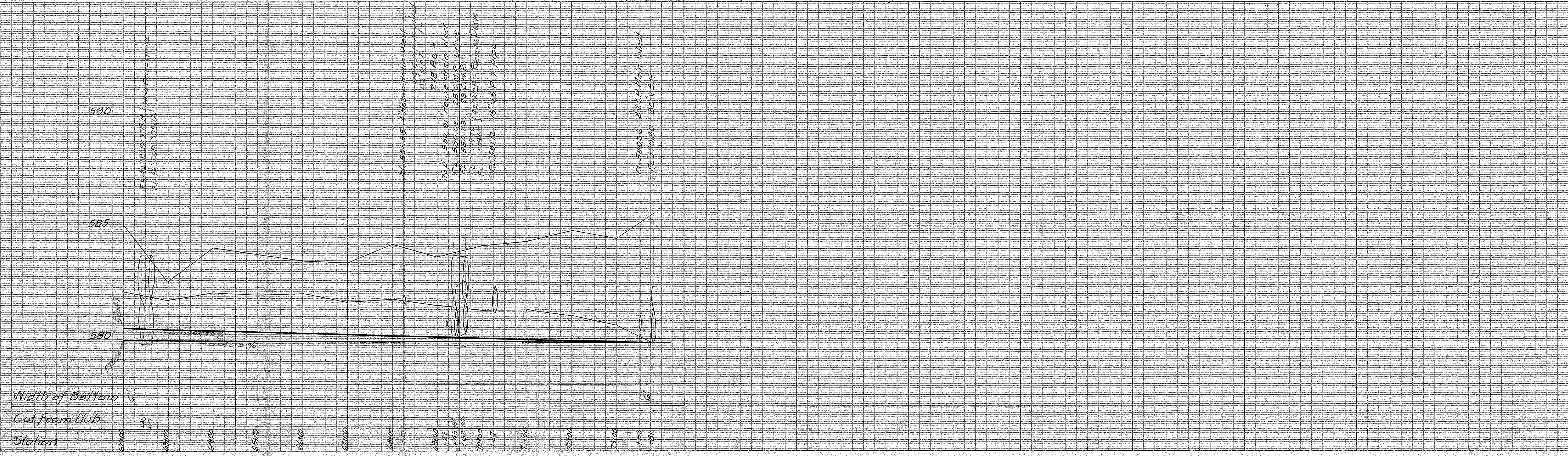
Ditch Book 143-Pg 57



BREDEHOFT DITCH SALEM TWP. SEC. 8, 17, 18 ---- 1973 ----

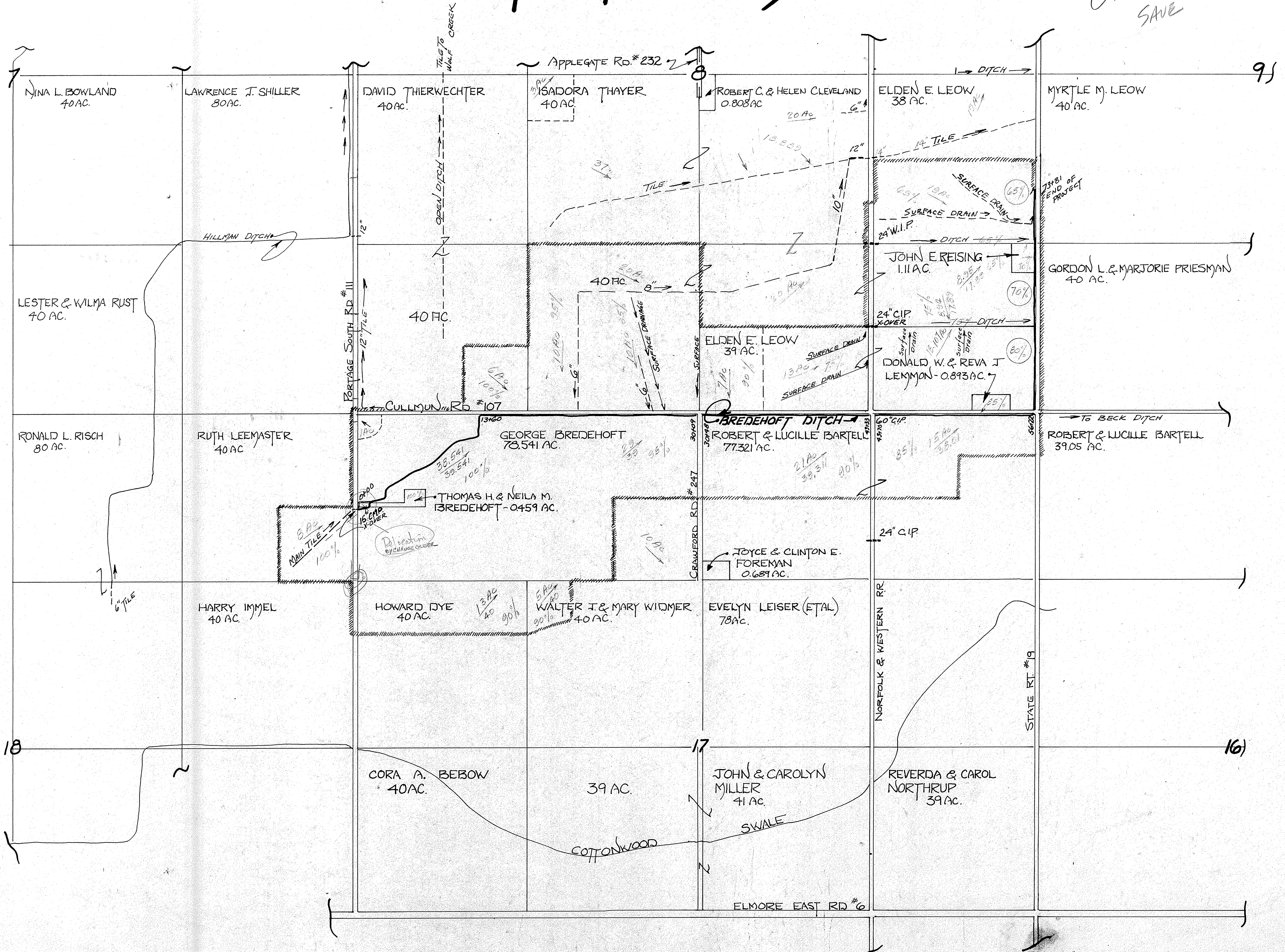
B.M. Sta 74+31
R.R. Spk. P.O. West side
Elev 586.20

Ditch Book 143-Pg 57



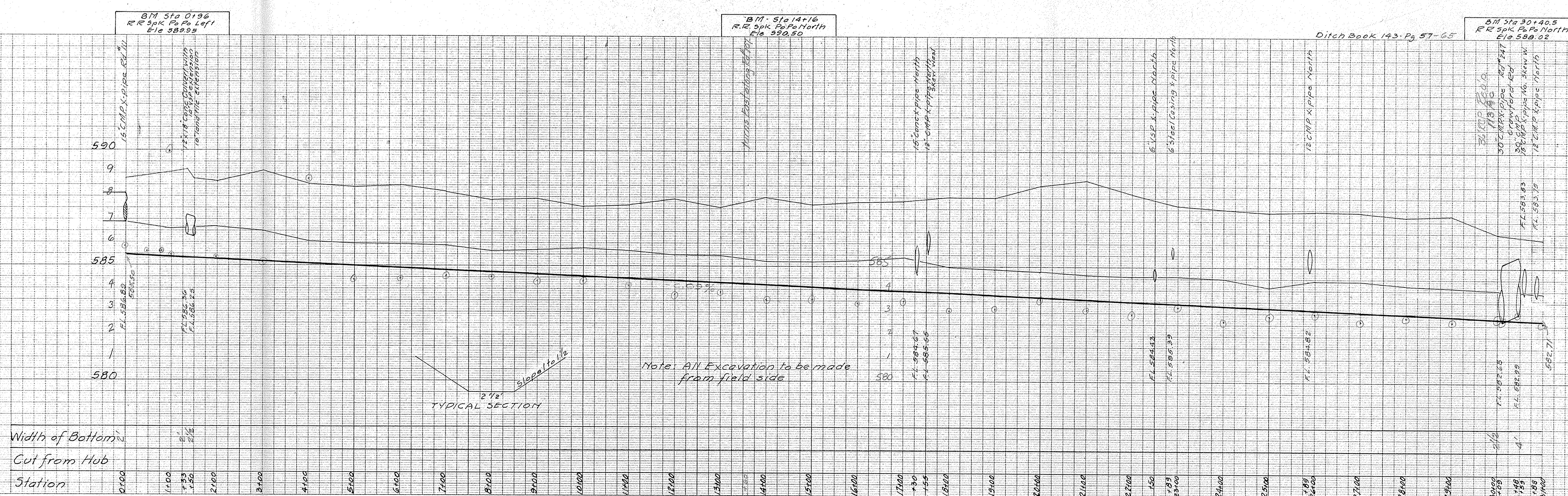
BREDEHOFT DITCH-----1973

OFFICE COPY
SAVE



BREDEHOFT DITCH SALEM TWP. SEC. 8, 17, 18 ----1973----

office copy
For Final

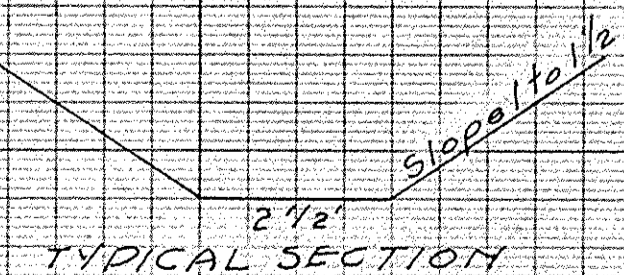


BM Sta 0+196
RR Spk Po Po North
Ele 582.95

BM Sta 14+16
RR Spk Po Po North
Ele 580.50

BM Sta 30+40.5
RR Spk Po Po North
Ele 588.02

Ditch Book 143 Pg. 57-65



Note: All Excavation to be made from field side

Width of Bottom
Cut from Hub
Station

BREDEHOFT DITCH

SALEM TWP.

SEC. 8, 17, 18

---- 1973 ----

5774

B.M. Sta 74+91
R.R. Spk. Po. Po. West side
Elev 586.20

Ditch Book 143-Pg 57

