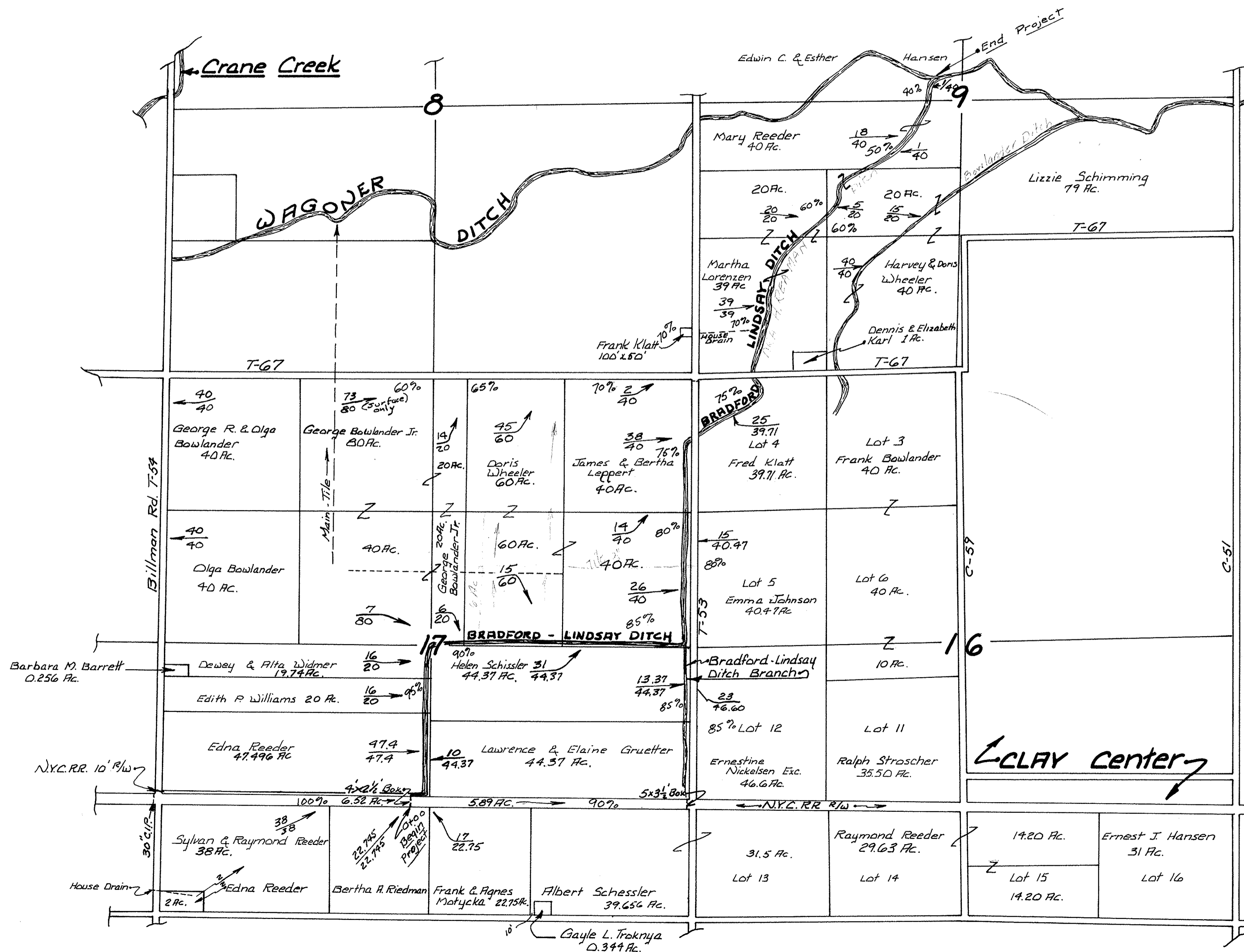
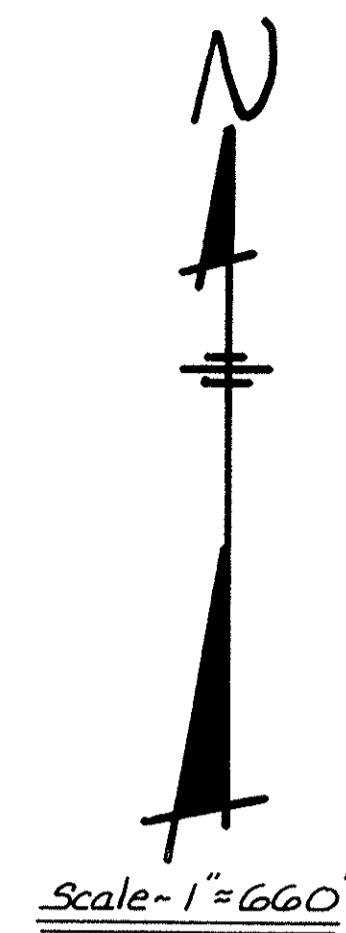


BRADFORD-LINDSAY DITCH DRAINAGE MAP ALLEN TWP. SEC. - 9, 16, 17 1963

L.S.A. H. REEDMAN DITCH



Total Township Roads
Allen Twp. ~ 14.34 Ac. @ 100 %

* Printing error - refer to next page 1/4/61

BRADFORD - LINDSAY DITCH

SEC. 9-16-17 ALLEN TWP.

OTTAWA COUNTY

1963

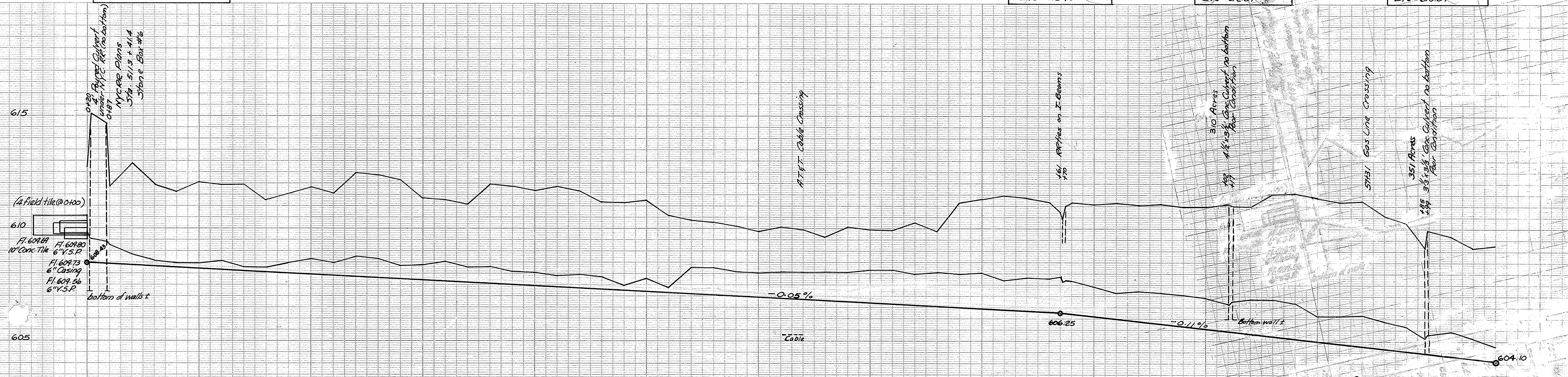
BM Sta. 0420
"X" & So. Hdwall RR Culvert
Elev. 614.38

GONE
BM Sta. 43+80.
RR Spk. P.O.P.
Elev. 612.96

B.A. - 4/30/93 STA 49-46.5
SE - RR 200' IN PAVEMENT
SERVANT POLE - EAST
SIDE T.R. - 53
Elev. = 612.43

GONE
BM Sta. 51+17
"X" & No. Hdwall
Elev. 620.1

GONE
BM Sta. 59+99
"X" & No. Hdwall
Elev. 610.04



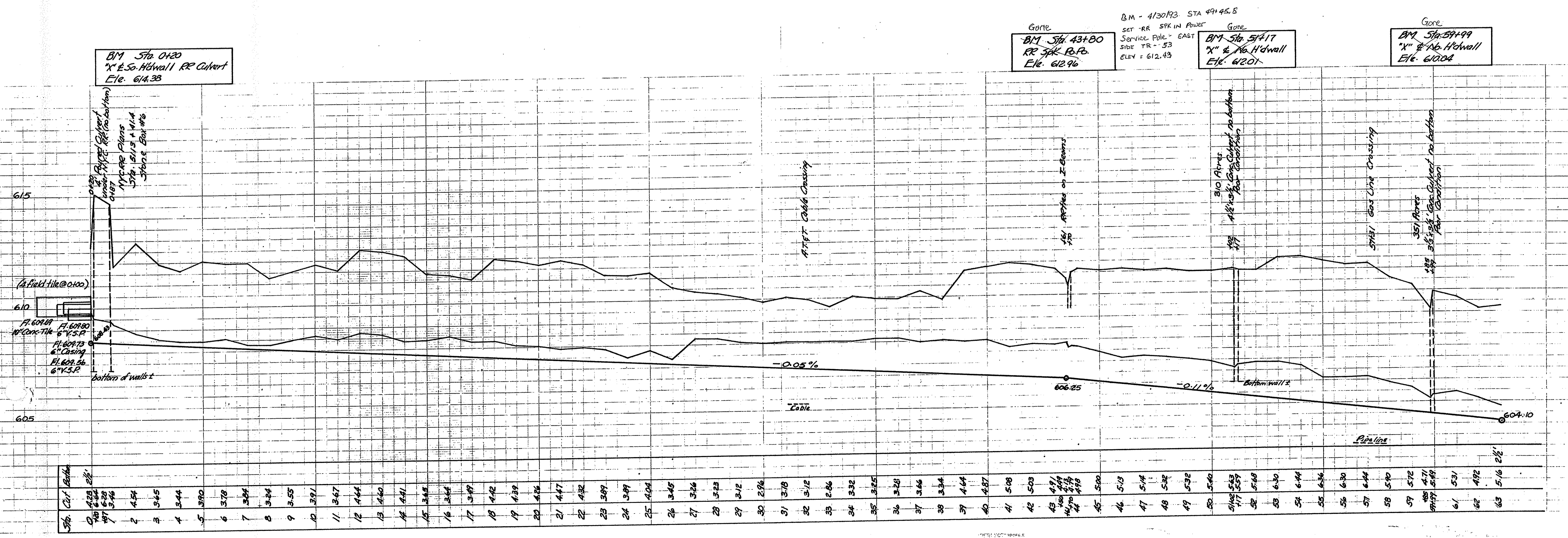
| Sta. | Cut | Bottom |
|------|------|--------|
| 0 | 4.28 | 2 1/2' |
| 1 | 6.04 | 1.80 |
| 2 | 4.54 | 1.87 |
| 3 | 3.65 | 1.46 |
| 4 | 3.44 | 1.44 |
| 5 | 3.90 | 1.44 |
| 6 | 3.78 | 1.44 |
| 7 | 3.94 | 1.44 |
| 8 | 3.24 | 1.44 |
| 9 | 3.55 | 1.44 |
| 10 | 3.91 | 1.44 |
| 11 | 3.67 | 1.44 |
| 12 | 4.64 | 1.44 |
| 13 | 4.60 | 1.44 |
| 14 | 4.41 | 1.44 |
| 15 | 3.65 | 1.44 |
| 16 | 3.64 | 1.44 |
| 17 | 3.49 | 1.44 |
| 18 | 4.42 | 1.44 |
| 19 | 4.39 | 1.44 |
| 20 | 4.26 | 1.44 |
| 21 | 4.47 | 1.44 |
| 22 | 4.32 | 1.44 |
| 23 | 3.89 | 1.44 |
| 24 | 3.89 | 1.44 |
| 25 | 4.04 | 1.44 |
| 26 | 3.45 | 1.44 |
| 27 | 3.26 | 1.44 |
| 28 | 3.23 | 1.44 |
| 29 | 3.12 | 1.44 |
| 30 | 2.96 | 1.44 |
| 31 | 3.18 | 1.44 |
| 32 | 3.12 | 1.44 |
| 33 | 2.86 | 1.44 |
| 34 | 3.32 | 1.44 |
| 35 | 3.25 | 1.44 |
| 36 | 3.28 | 1.44 |
| 37 | 3.46 | 1.44 |
| 38 | 3.34 | 1.44 |
| 39 | 4.64 | 1.44 |
| 40 | 4.87 | 1.44 |
| 41 | 5.08 | 1.44 |
| 42 | 5.03 | 1.44 |
| 43 | 4.91 | 1.44 |
| 44 | 4.98 | 1.44 |
| 45 | 5.00 | 1.44 |
| 46 | 5.13 | 1.44 |
| 47 | 5.14 | 1.44 |
| 48 | 5.32 | 1.44 |
| 49 | 5.32 | 1.44 |
| 50 | 5.40 | 1.44 |
| 51 | 5.63 | 1.44 |
| 52 | 5.59 | 1.44 |
| 53 | 5.68 | 1.44 |
| 54 | 6.30 | 1.44 |
| 55 | 6.44 | 1.44 |
| 56 | 6.36 | 1.44 |
| 57 | 6.30 | 1.44 |
| 58 | 6.44 | 1.44 |
| 59 | 5.72 | 1.44 |
| 60 | 4.71 | 1.44 |
| 61 | 5.49 | 1.44 |
| 62 | 5.31 | 1.44 |
| 63 | 4.92 | 1.44 |
| 64 | 5.16 | 2 1/2' |

BRADFORD - LINDSAY DITCH

SEC. 9-16-17 ALLEN TWP.

OTTAWA COUNTY

1963



BM Sta. 0420
"X" & So. Hdwall RR Culvert
Elev. 614.33

GORE
BM Sta. 43+80
RR Spk. R.F.B.
Elev. 612.96

B.M. - 4130193 STA 49+45.5
SET - RR SPK IN PROJET
Service Pole - EAST
SIDE TR - 53
ELEV. = 612.43

GORE
BM Sta. 51+17
"X" & No. Hdwall
Elev. 612.01

GORE
BM Sta. 59+99
"X" & No. Hdwall
Elev. 610.04

| Sta. | Chk. Length | Elev. |
|------|-------------|--------|
| 0 | 4.25 | 612.25 |
| 1 | 5.25 | 611.50 |
| 2 | 4.54 | 611.54 |
| 3 | 9.45 | 611.54 |
| 4 | 3.44 | 611.54 |
| 5 | 3.90 | 611.54 |
| 6 | 3.78 | 611.54 |
| 7 | 3.84 | 611.54 |
| 8 | 3.84 | 611.54 |
| 9 | 3.55 | 611.54 |
| 10 | 3.91 | 611.54 |
| 11 | 3.67 | 611.54 |
| 12 | 4.64 | 611.54 |
| 13 | 4.60 | 611.54 |
| 14 | 4.41 | 611.54 |
| 15 | 3.43 | 611.54 |
| 16 | 3.64 | 611.54 |
| 17 | 3.49 | 611.54 |
| 18 | 4.42 | 611.54 |
| 19 | 4.39 | 611.54 |
| 20 | 4.26 | 611.54 |
| 21 | 4.47 | 611.54 |
| 22 | 4.32 | 611.54 |
| 23 | 3.89 | 611.54 |
| 24 | 3.49 | 611.54 |
| 25 | 4.04 | 611.54 |
| 26 | 3.45 | 611.54 |
| 27 | 3.66 | 611.54 |
| 28 | 3.23 | 611.54 |
| 29 | 3.12 | 611.54 |
| 30 | 2.26 | 611.54 |
| 31 | 3.18 | 611.54 |
| 32 | 3.12 | 611.54 |
| 33 | 2.86 | 611.54 |
| 34 | 3.32 | 611.54 |
| 35 | 3.25 | 611.54 |
| 36 | 3.28 | 611.54 |
| 37 | 3.66 | 611.54 |
| 38 | 3.34 | 611.54 |
| 39 | 4.64 | 611.54 |
| 40 | 4.87 | 611.54 |
| 41 | 5.08 | 611.54 |
| 42 | 5.03 | 611.54 |
| 43 | 4.91 | 611.54 |
| 44 | 4.99 | 611.54 |
| 45 | 5.00 | 611.54 |
| 46 | 5.13 | 611.54 |
| 47 | 5.14 | 611.54 |
| 48 | 5.32 | 611.54 |
| 49 | 5.32 | 611.54 |
| 50 | 5.40 | 611.54 |
| 51 | 5.43 | 611.54 |
| 52 | 5.68 | 611.54 |
| 53 | 6.30 | 611.54 |
| 54 | 6.44 | 611.54 |
| 55 | 6.36 | 611.54 |
| 56 | 6.30 | 611.54 |
| 57 | 6.44 | 611.54 |
| 58 | 5.90 | 611.54 |
| 59 | 5.72 | 611.54 |
| 60 | 4.71 | 611.54 |
| 61 | 5.31 | 611.54 |
| 62 | 4.92 | 611.54 |
| 63 | 5.16 | 611.54 |

BRADFORD - LINDSAY DITCH

SEC. 9-16-17 ALLEN TWP.

OTTAWA COUNTY

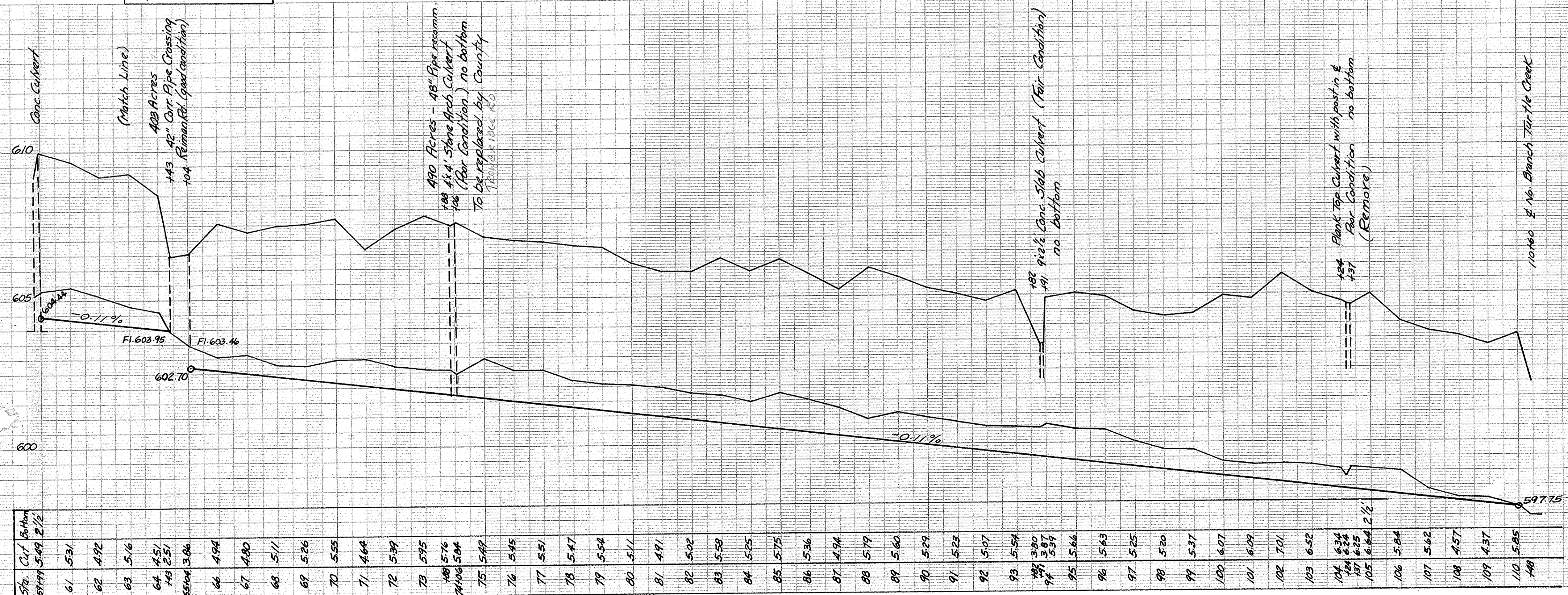
1963

Ditch Book 140 - Pg 44-50

5/22/62
 B.M. - SET RR SPK. IN P.P.O.
 C. SIDE OF DITCH - N. SIDE
 OF T.R. 167 ELEV. = 608.29
 SEE DRAWING BR. 28 P. 10

BM Sta 65+04
 "X" NE cor. E. Hdwall
 Ele. 609.89

BM Sta. 93+91
 Top No. Cor. Slab Culvert
 Ele. 603.49



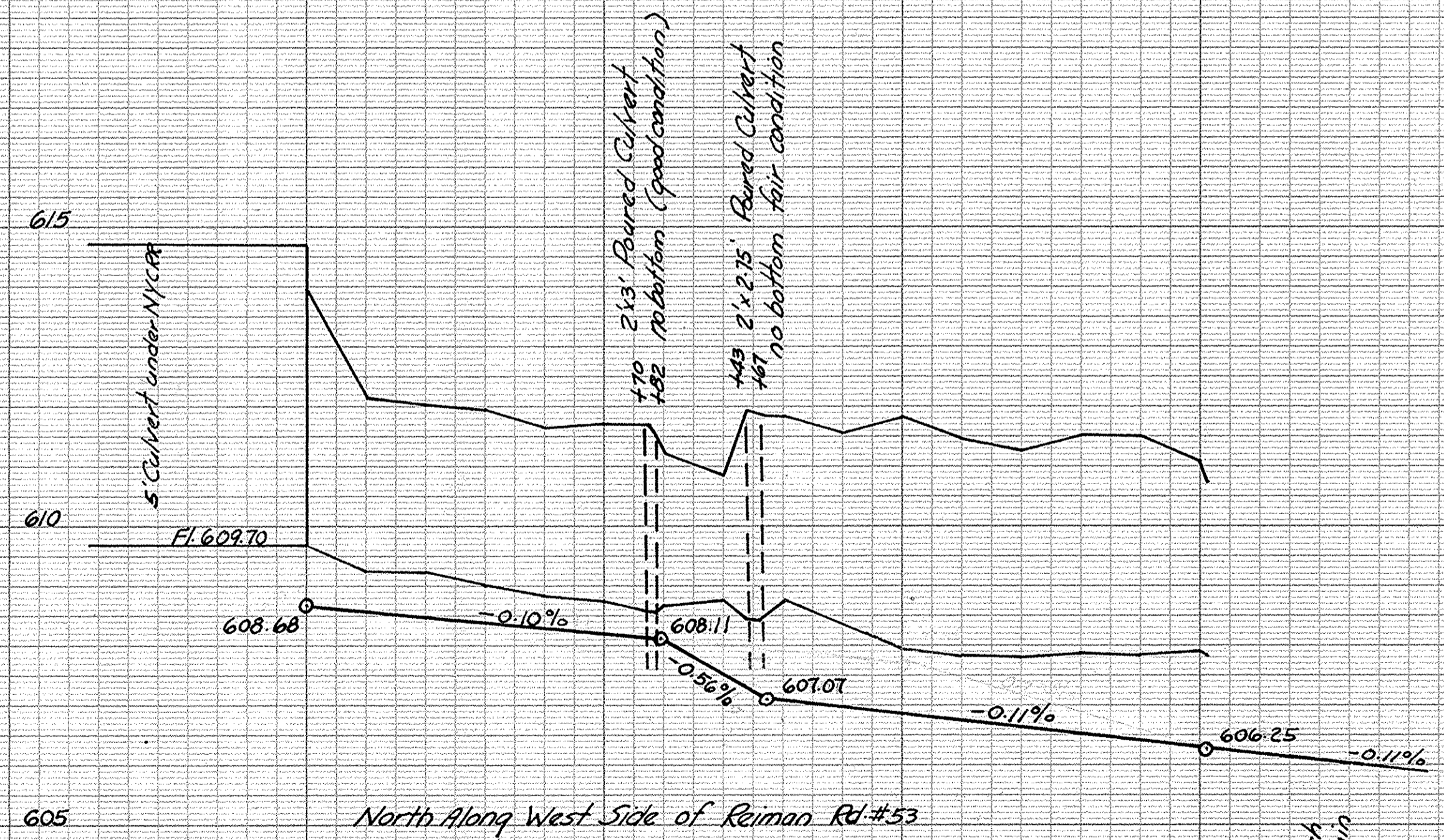
| | | | | | | | | | | | | | | | | | | | | | | | | | | | | | | | | | | | | | | | | | | | | | | | | | | | | | | |
|-------------|------|------|------|------|------|------|------|------|------|------|------|------|------|------|------|------|------|------|------|------|------|------|------|------|------|------|------|------|------|------|------|------|------|------|------|------|------|------|------|------|------|------|------|------|------|------|------|------|------|------|------|------|------|------|
| Sta. | 61 | 62 | 63 | 64 | 65 | 66 | 67 | 68 | 69 | 70 | 71 | 72 | 73 | 74 | 75 | 76 | 77 | 78 | 79 | 80 | 81 | 82 | 83 | 84 | 85 | 86 | 87 | 88 | 89 | 90 | 91 | 92 | 93 | 94 | 95 | 96 | 97 | 98 | 99 | 100 | 101 | 102 | 103 | 104 | 105 | 106 | 107 | 108 | 109 | 110 | | | | |
| Cor. Bottom | 5.49 | 5.31 | 4.92 | 5.16 | 4.51 | 2.51 | 3.86 | 4.94 | 4.80 | 5.11 | 5.26 | 5.55 | 5.95 | 5.76 | 5.84 | 5.49 | 5.45 | 5.51 | 5.47 | 5.54 | 5.11 | 4.91 | 5.02 | 5.53 | 5.25 | 5.75 | 5.36 | 4.94 | 5.19 | 5.60 | 5.29 | 5.23 | 5.07 | 5.54 | 3.80 | 3.87 | 5.39 | 5.66 | 5.63 | 5.25 | 5.20 | 5.37 | 6.07 | 6.09 | 7.01 | 6.52 | 6.34 | 6.24 | 6.25 | 5.84 | 5.62 | 4.57 | 4.37 | 5.85 |

BRADFORD - LINDSAY DITCH (BRANCH) SEC. 17 ALLEN TWP. OTTAWA COUNTY 1963

B.M. - Ele - 615.81
"X" & Hwy No. 510
West Side of
Reiman Rd.

4/30/63
B.M. - CHECKED "X" & N. HEADWALL
OF EXIST. DRAINAGE - N. SIDE T.R. '53
ELEVATION = 611.79, STATION = 7+27

4/30/63
B.M. - TOP & CORN. HEADWALL -
N. SIDE OF EXIST. DRAINAGE - E. SIDE T.R. '53
ELEVATION = 610.25, STATION = 11+99



| Sta | Cut | Bottom |
|-----|------|--------|
| 0 | 5.30 | 2 1/2 |
| 1 | 3.60 | |
| 2 | 3.59 | |
| 3 | 3.37 | |
| 4 | 3.37 | |
| 5 | 3.53 | |
| 6 | 3.88 | |
| 7 | 3.40 | |
| 8 | 4.70 | |
| 9 | 4.77 | |
| 10 | 4.81 | |
| 11 | 4.66 | |
| 12 | 5.00 | |
| 13 | 4.67 | |
| 14 | 5.02 | |
| 15 | 5.14 | |
| 16 | 4.81 | |
| 17 | 4.89 | |

Sta 15+12 of Branch
is Sta 43+50 of Main