

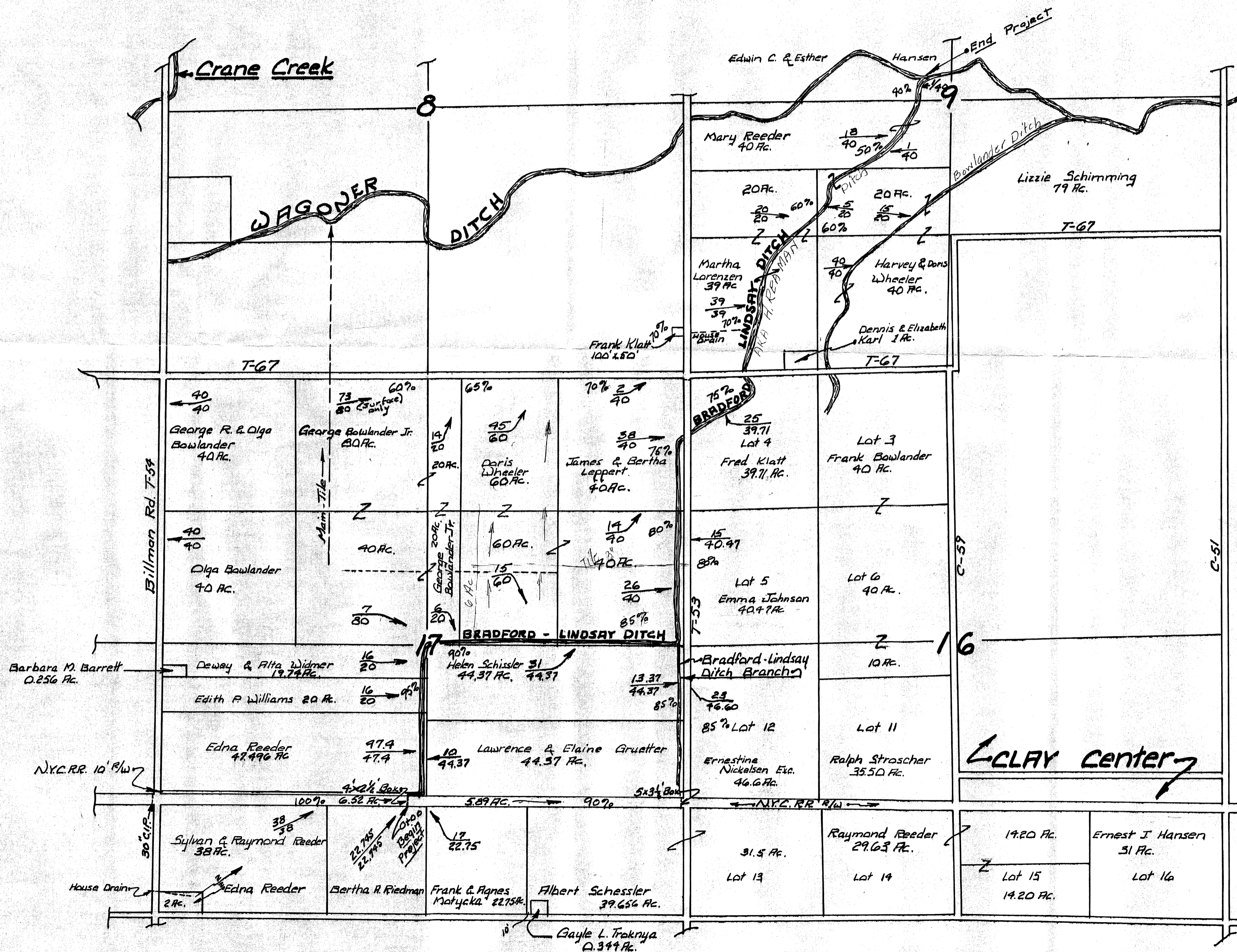
BRADFORD-LINDSAY DITCH DRAINAGE MAP

ALLEN TWP.
SEC. - 9, 16, 17
1963

AKA H. REAMAN DITCH



Scale - 1" = 660'



Total Township Roads
Allen Twp. - 14.34 Ac. @ 100%

SECTION 9 - ALLEN

Carol A. Hansen
Ellen M. Polsdorfer
40.00-A. 265-881

Lillian D. Robison
40.0-A. 234-643
230-809

Galen C. Miller
40.0-A. 230-809
234-641
245-97
298-568(ENSE)

MARYANN M. & JOHN C. McQUEARY
16.0-A. 338-740
361-847

Lillian Robison
16.0-A. 230-809
234-643

MARYANN M. & JOHN C. McQUEARY
16.0-A. 338-740
361-847

4 5
6 7
8

ESTATES
ROBERT

MICHAEL FISHER
7.0-Ac. 321-710

Veronica
Engineer

HOUSE
DOWN

North Branch

Turtle

R. Dale & Shirley Ann Reeder
40.0-A. 228-288

RAYMOND S. & JUDITH A. ROBAKIEWICZ
20-Ac. 321-326
329-207

20.00-A.
WHITE ROCK QUARRY L.P.
372-338

18^{ac}
50%

1.0^{ac}
40%

1.0^{ac}
50%

39-Ac. 321-326
329-207

20^{ac}
60%

5^{ac}
60%

15^{ac}

40^{ac}

18.266
4.740
7.526

WHITE ROCK QUARRY L.P.
372-338

40.00-A

COOPERATION LINE
AUGUST 10-A-91
C.R.#5-91

Ironbridge Road I.R.#67 60' R/W

ROSEMARIE E. BENCH
40-A. 297-378

Parcel I

40^{ac}

ROSEMARIE E. BENCH
80-A. 297-378

Parcel III

36^{ac}
60%

ROSEMARIE E. BENCH
40-A. 297-378

Parcel II

40^{ac}

SECTION 17
ALLEN

7^{ac}
91%

14^{ac}
66%

15^{ac}
90%

15^{ac}
95%

16^{ac}
95%

47.9^{ac}
100%

39.067 ch

8" TILE

2.1157^{ac}
5.5032^{ac}

Kelly L. Bowersox
58.00^{ac}
45^{ac}
60%

James L. & Bertha C. Leppert
Lots 2, 3, 4, 5, 6, 7, 8, 9, 10, 11, 12, 13, 14, 15, 16, 17, 18, 19, 20, 21, 22, 23, 24, 25, 26, 27, 28, 29, 30, 31, 32, 33, 34, 35, 36, 37, 38, 39, 40, 41, 42, 43, 44, 45, 46, 47, 48, 49, 50, 51, 52, 53, 54, 55, 56, 57, 58, 59, 60, 61, 62, 63, 64, 65, 66, 67, 68, 69, 70, 71, 72, 73, 74, 75, 76, 77, 78, 79, 80, 81, 82, 83, 84, 85, 86, 87, 88, 89, 90, 91, 92, 93, 94, 95, 96, 97, 98, 99, 100

James L. & Bertha C. Leppert
Lot 1
21.1068-A

Lot 2
22.44

Lot 3
22.44

Lot 4
22.44

Lot 5
22.44

Lot 6
22.44

Lot 7
22.44

Lot 8
22.44

Lot 9
22.44

Lot 10
22.44

Lot 11
22.44

Lot 12
22.44

Lot 13
22.44

Lot 14
22.44

Lot 15
22.44

Lot 16
22.44

Lot 17
22.44

Lot 18
22.44

Lot 19
22.44

Lot 20
22.44

Lot 21
22.44

Lot 22
22.44

Lot 23
22.44

Lot 24
22.44

Lot 25
22.44

Lot 26
22.44

Lot 27
22.44

Lot 28
22.44

Lot 29
22.44

Lot 30
22.44

Lot 31
22.44

Lot 32
22.44

Lot 33
22.44

Lot 34
22.44

Lot 35
22.44

Lot 36
22.44

Lot 37
22.44

Lot 38
22.44

Lot 39
22.44

Lot 40
22.44

Lot 41
22.44

Lot 42
22.44

Lot 43
22.44

Lot 44
22.44

Lot 45
22.44

Lot 46
22.44

Lot 47
22.44

Lot 48
22.44

Lot 49
22.44

Lot 50
22.44

Lot 51
22.44

Lot 52
22.44

Lot 53
22.44

Lot 54
22.44

Lot 55
22.44

Lot 56
22.44

Lot 57
22.44

Lot 58
22.44

Lot 59
22.44

Lot 60
22.44

Lot 61
22.44

Lot 62
22.44

Lot 63
22.44

Lot 64
22.44

Lot 65
22.44

Lot 66
22.44

Lot 67
22.44

Lot 68
22.44

Lot 69
22.44

Lot 70
22.44

Lot 71
22.44

Lot 72
22.44

Lot 73
22.44

Lot 74
22.44

Lot 75
22.44

Lot 76
22.44

Lot 77
22.44

Lot 78
22.44

Lot 79
22.44

Lot 80
22.44

Lot 81
22.44

Lot 82
22.44

Lot 83
22.44

Lot 84
22.44

Lot 85
22.44

Lot 86
22.44

Lot 87
22.44

Lot 88
22.44

Lot 89
22.44

Lot 90
22.44

Lot 91
22.44

Lot 92
22.44

Lot 93
22.44

Lot 94
22.44

Lot 95
22.44

Lot 96
22.44

Lot 97
22.44

Lot 98
22.44

Lot 99
22.44

Lot 100
22.44

13.37^{ac}
85%

33.368^{ac}
90%

10^{ac}
100%

31^{ac}
90%

15^{ac}
90%

15^{ac}
90%

15^{ac}
95%

16^{ac}
95%

47.9^{ac}
100%

Edward & Carolyn Bowlander
5.337^{ac}
75%

John C. Bowlander
40.00-A. 265-739

LOT 4

BOB & DENISE BOWLANDER (SIT)
21.1068-A

LOT 3

JOHN C. BOWLANDER
40.00-A. 265-739

LOT 5

BOB & DENISE A. BOWLANDER (SIT)
40.47-A. 305-439 368-812

LOT 6

JOHN C. BOWLANDER
42.03-A. 265-739

LOT 7

BOB & DENISE A. BOWLANDER (SIT)
40.47-A. 305-439 368-812

LOT 8

JOHN C. BOWLANDER
42.03-A. 265-739

LOT 9

BOB & DENISE A. BOWLANDER (SIT)
40.47-A. 305-439 368-812

LOT 10

JOHN C. BOWLANDER
42.03-A. 265-739

LOT 11

BESSIE MAE STROHSCHER
34.252 A 229-734
225-942

LOT 12

LAWRENCE J. & ELAINE E. GRUETTER
43.9902-Ac. 340-849

LOT 13

Delores Shessler 1/4 Int.
De Etta Kunz 1/4 Int.
Margaret M. Williams 1/4 Int.

Ruth Kosina 1/4 Int.
31.50-A. 265-983
296-090

LOT 14

RICHARD ROY REEDER 1/3 INT
R. DALE REEDER 1/3 INT
JUNE A. BARBER 1/3 INT
29.63-A. 356-342

Billman Road T.R.#54 60' R/W

Joe & Janet Elmers
19.235-A. 307-13

15^{ac}
95%

Janet L. Elmers
20.00-A. 307-281

16^{ac}
95%

Dale Reeder 1/3
June Burger 1/3
Richard Reeder 1/3
48.086-A. 215-313
Misc. 11-461

47.9^{ac}
100%

39.067 ch

100 Rds

Conrail 276-1023

14.062 ch

Reeder Farms, Inc.
38.00-A. 286-621

Joseph P. & Anna L. Zielinski 2.00-A

1006

16.656 ch

Reeder Farms, Inc.
22.62-A. 287-611

22.62^{ac}
100%

17^{ac}
100%

13.92 ch

Max A. A. Motycka
Elizabeth Horak
Jennie Yakos
Agnes Fox
22.75-A. 270-996
275-1053

17^{ac}
100%

16.25 ch

GARY R. & GRACE L. SHELLEER
31.8759 Ac.
287-237
3165-556
365-557

14.085 ch

14.005 ch

Moline Martin Road C.R.#66 60' R/W