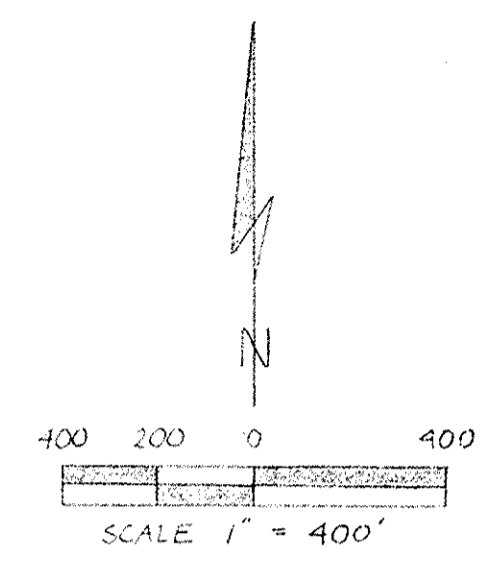
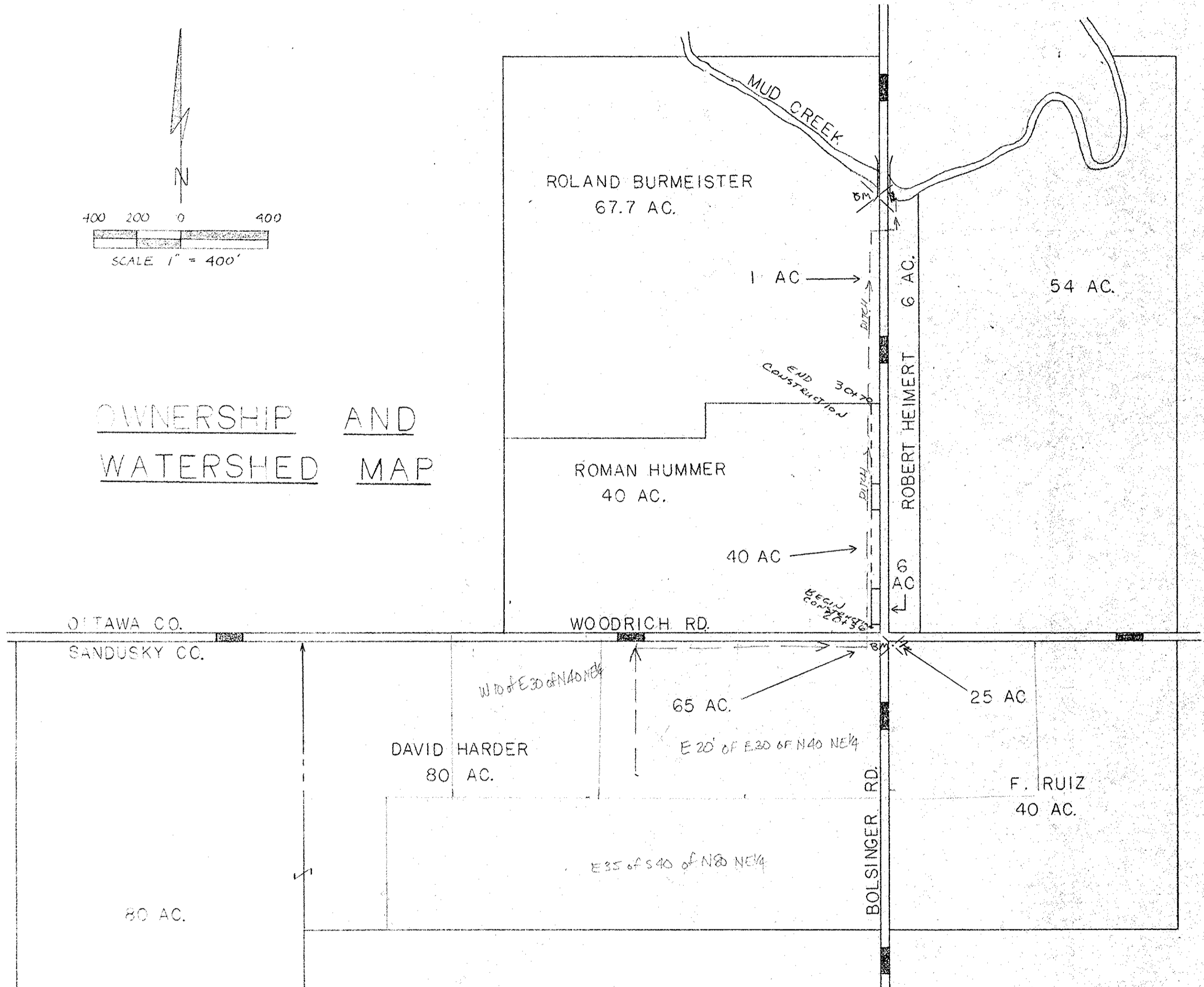


DONE



OWNERSHIP AND WATERSHED MAP



THE WATERSHED CONSISTS OF LAND WITHIN THE SE 1/4 OF SECTION 22 AND THE SW 1/4 OF SECTION 23 SALEM TOWNSHIP, OTTAWA COUNTY, OHIO

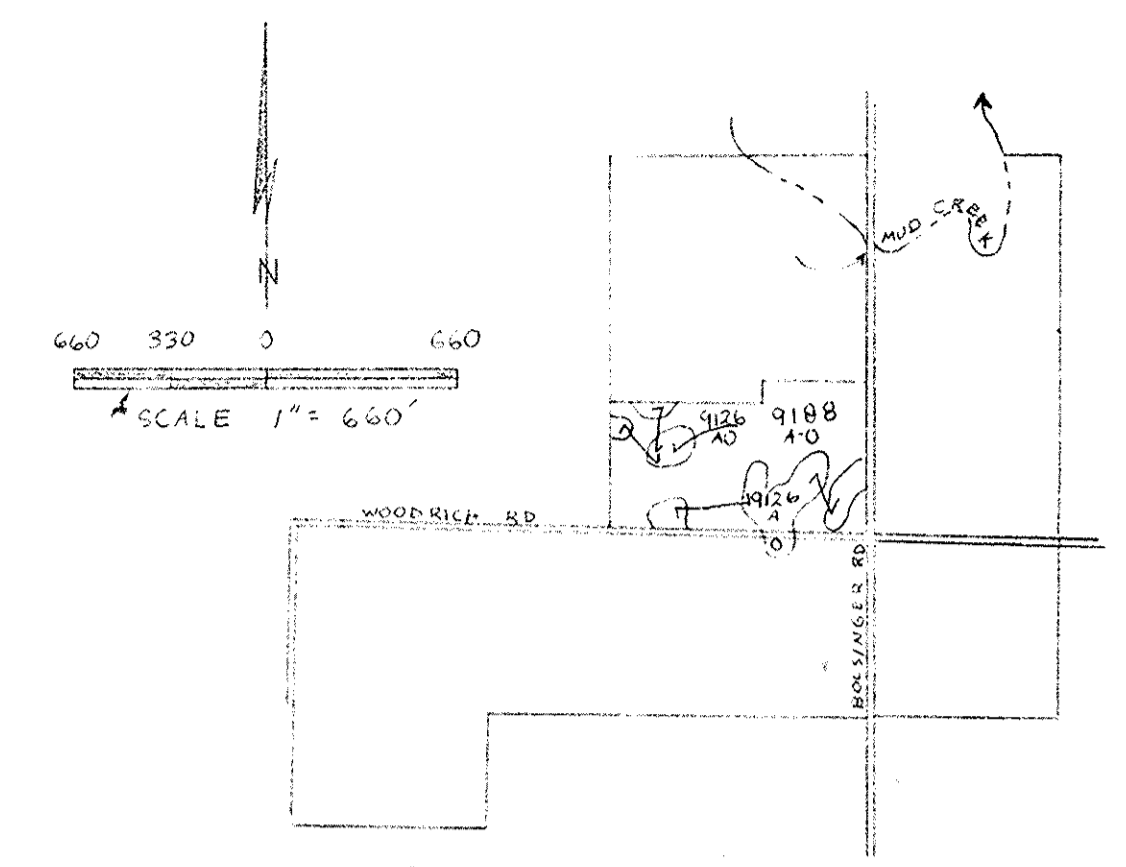
LEGEND

PROPOSED IMPROVEMENT	
ROADS	
PROPERTY BOUNDARY	
WATERSHED BOUNDARY	
ACRES OWNED	00 AC.
ACRES BENEFITED	00 AC. →

SUPPORTING DATA

DRAINAGE AREA	142 ACRES
DESIGN COEFFICIENT	4" RUN OFF
LAND USE	GENERAL AND CASH CROPS
SOIL TYPES	TOLEDO AND FULTON
LAND SLOPE	0 - 2 %
TYPE DRAINAGE	SURFACE AND SUBSURFACE

- B.M. #1 TOP OF WEST END OF 48" CAST IRON PIPE THRU BOLSINGER ROAD (1' BEHIND BELL)
OUTLET END OF CROSSOVER
ASSUMED ELEVATION 93.40
- B.M. #2 SPIKE IN ELECTRIC POLE IN SE CORNER OF BOLSINGER AND WOODRICH ROAD INTERSECTION
ASSUMED ELEVATION 100.00



SOILS MAP
SOILS TYPES
9188 A-0 TOLEDO SILTY CLAY
9126 A-0 FULTON SILTY CLAY LOAM

APPROVED BY:

John A. Pappas

OTTAWA COUNTY ENGINEER DATE 6/13/78

SALEM TOWNSHIP TRUSTEES
DATE

RICE TOWNSHIP TRUSTEES
DATE

SURVEYED: NOVEMBER 14, 1977
BY: DOYLE F. SOMMER
THOMAS AMBROSE
MICHAEL GARGAC
BOB BALL

FIELD NOTES ARE ON FILE IN FOLDER #133 AT THE OTTAWA SHCD OFFICE IN OAK HARBOR, OHIO

JOB CLASS V GROUP # 133

OUTLET DITCH IMPROVEMENT
BOLSINGER ROAD DITCH GROUP # 133
(FORMERLY SLOMA DITCH)
SALEM TOWNSHIP SECTION 22 OTTAWA COUNTY

**U. S. DEPARTMENT OF AGRICULTURE
SOIL CONSERVATION SERVICE**

Designed *D. Sommer* 1/78
Drawn *MICHAEL GARGAC* 1/78
Traced _____
Checked *Bob Ball* 5/78

Approved by *Bob Ball*
Title *Conservationist*
In _____
Drawing No. _____
of 3