

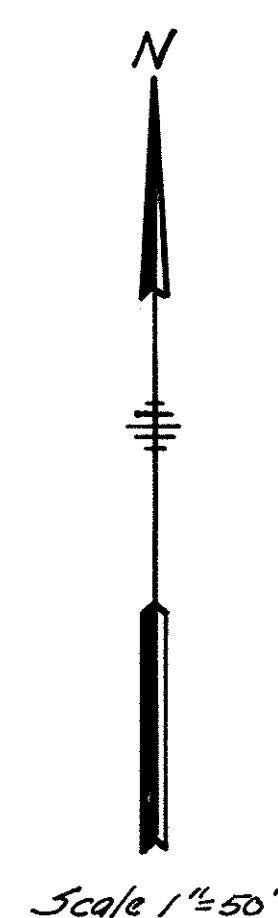
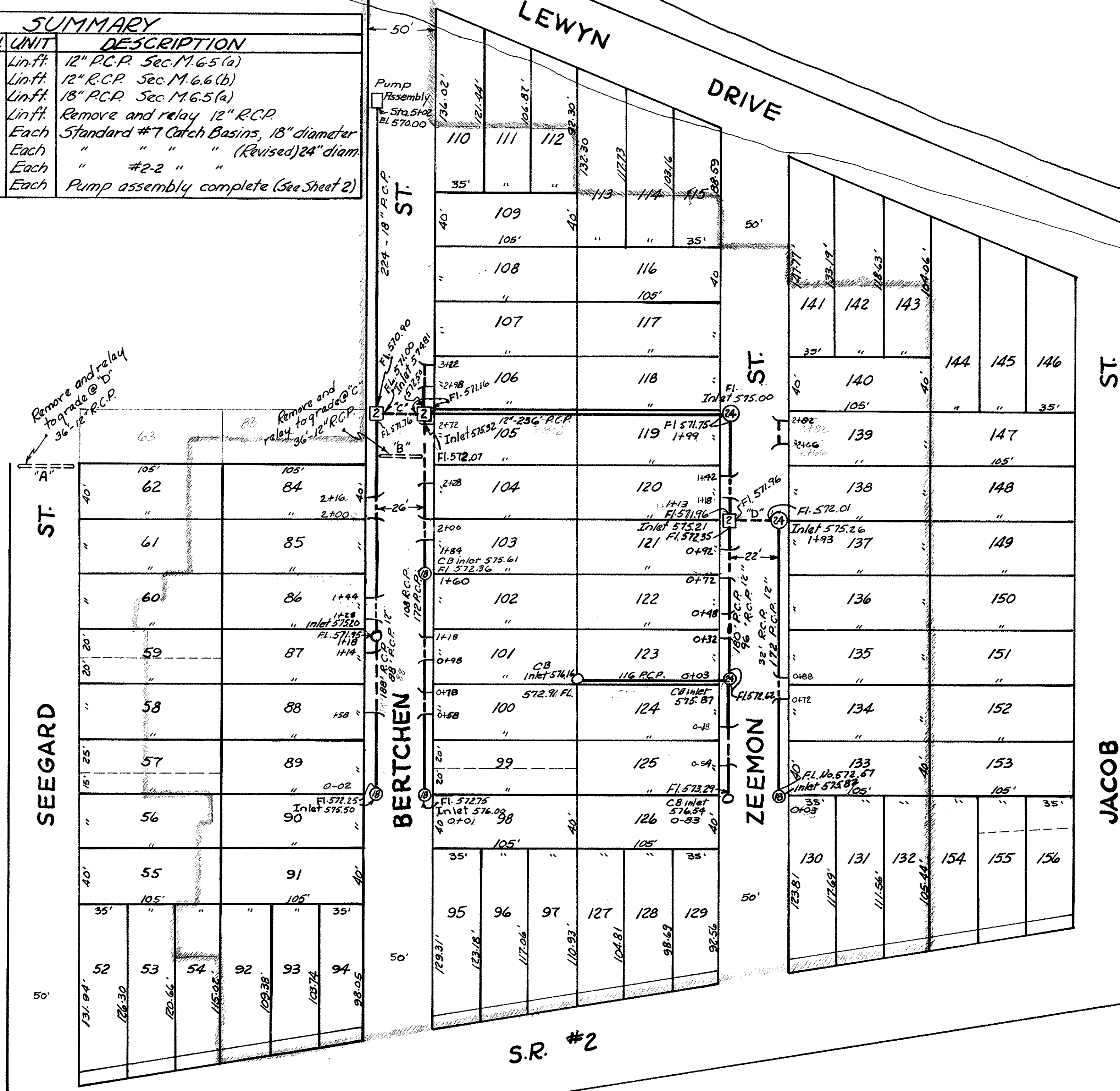
ASCHER BEACH DRAINAGE

LAKE ERIE

LEWYN DRIVE

DRIVE

SUMMARY			
ITEM	QUAN	UNIT	DESCRIPTION
I-1	1086	Lin.ft.	12" R.C.P. Sec. M.6.5 (a)
I-1	300	Lin.ft.	12" R.C.P. Sec. M.6.6 (b)
I-1	224	Lin.ft.	18" R.C.P. Sec. M.6.5 (a)
I-6	72	Lin.ft.	Remove and relay 12" R.C.P.
I-8	67	Each	Standard #7 Catch Basins, 18" diameter
I-8	3	Each	" " " (Revised) 24" diam.
I-8	3	Each	" #2-2 " "
Special	Lump	Each	Pump assembly complete (See Sheet 2)

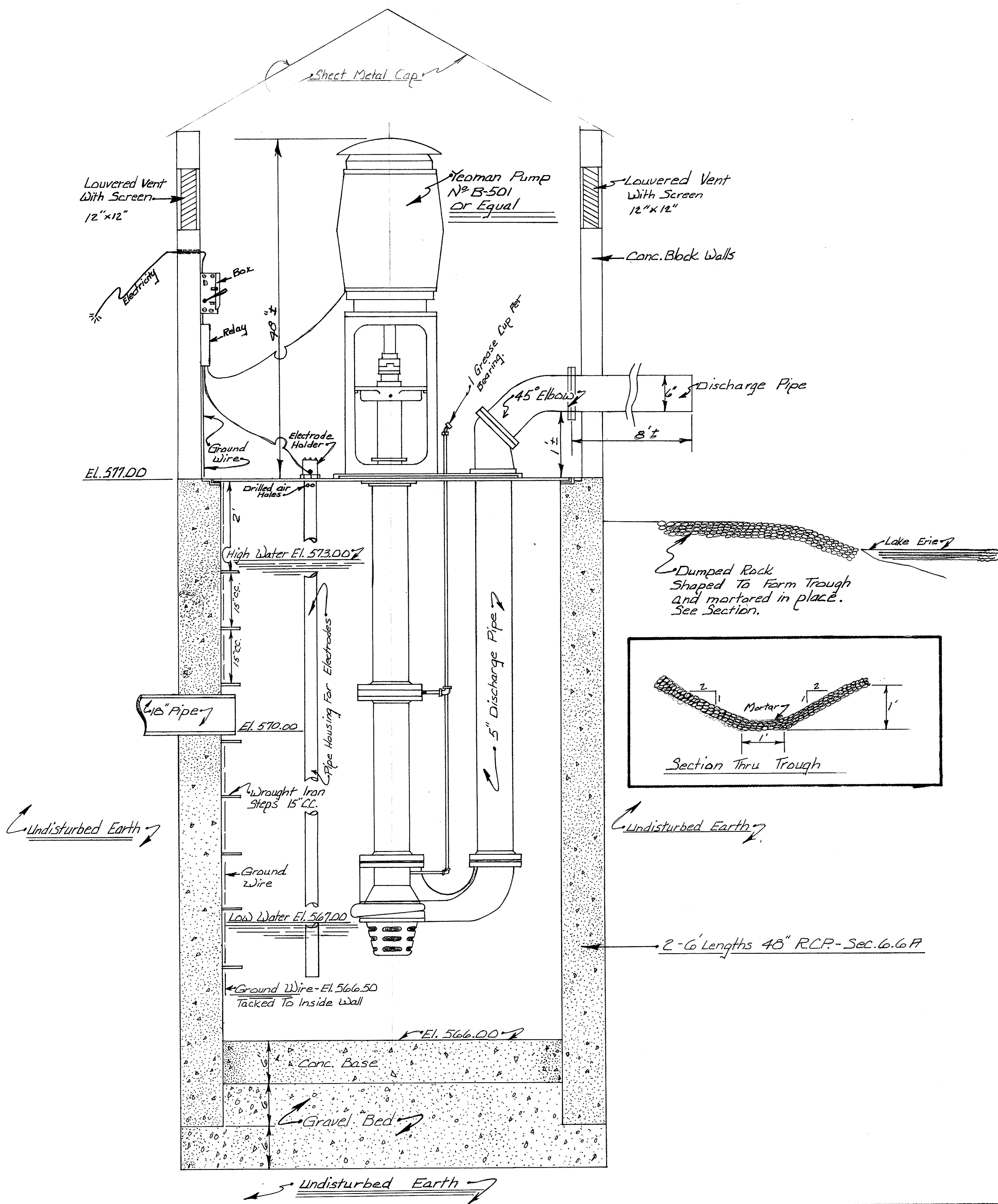


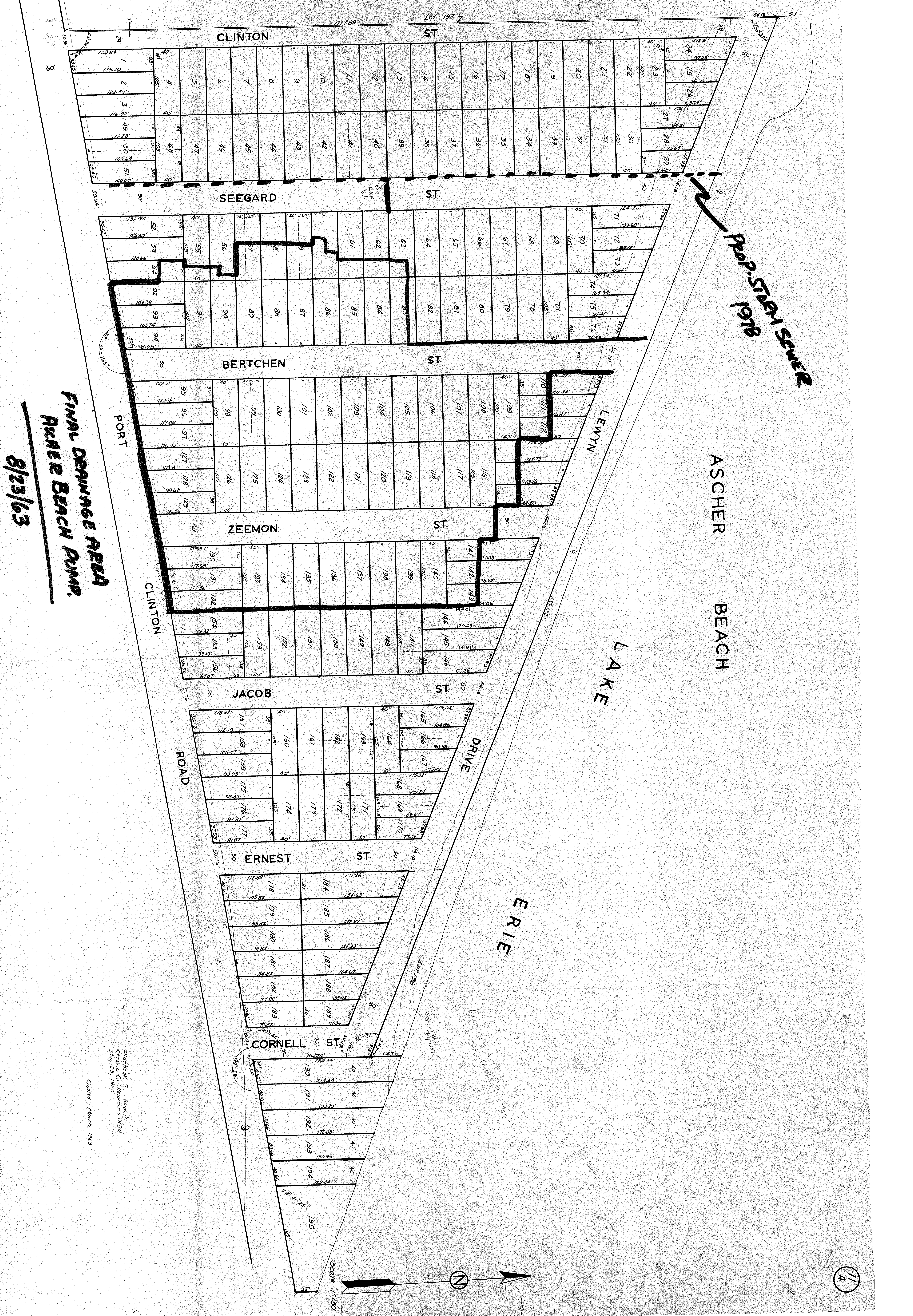
- Indicates reinforced pipe
 - Indicates plain pipe
 - ⊗ - Standard No. 7 18" C.B.
 - ⊕ - Revised No. 7 24" C.B.
 - ⊠ - Standard No. 2-2 C.B.
- All pipe grades = F.I. show per plans

Ottawa Co. Engineers Office
 August, 1963
 Drawn by: John Papcun
 Approved by: _____
 County Engineer

...ASCHER BEACH DRAINAGE... LIFT PUMP

Sheet - 2
Of - 2





PROP. SYSTEM SEWER

ASCHER BEACH

LAKE

ERIE

**FINAL DRAINAGE AREA
ASCHER BEACH PUMP.**
8/23/63

Platbook 5 Page 3
Ottawa Co. Recorder's Office
May 29, 1920

Copied March 1983

