

# OTTAWA COUNTY ENGINEERS OFFICE

**REFERENCE NO.** 5-6-14-C  
 NE CORNER POST SECTION 5  
 HARRIS TWP.  
**SHEET** 1 OF 1.

**ROUTE:** C-19 GRAYTOWN RD.  
 @ S-163

**TOWNSHIP:** HARRIS

**SECTION:** 5

**T** 6 **NR** 14 **E.**

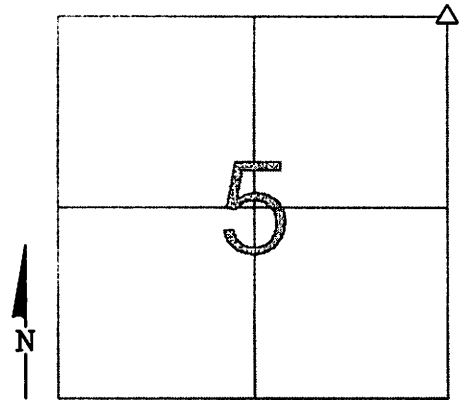
**PERSONNEL:**  
 R. NUHFER, P.S.  
 M. BROUGH  
 A. WEIRICH, P.S. - BEC  
 J. GLASS - BEC

**NORTHING:**

**EASTING:**

**DATUM:**

**DATE / WEATHER / TEMP:**  
 JANUARY 5, 2000  
 FAIR  
 35° F



MONUMENT INFORMATION

MONUMENT TYPE: FD HARDHEAD STONE  
 ON SURFACE - BELOW: 2.17'  
 LEFT - CL PAV'T - RIGHT:  
 RECTANGULAR STONE: 9" x 6" x 8"

MISC. INFORMATION

FD 2-3/4" HEXHEAD IRON PIN 0.91' BELOW  
 SURFACE - REMOVED, FD RAILROAD SPIKE  
 UNDER PIN 1.83' BELOW SURFACE - REMOVED  
 AND DUG TO STONE

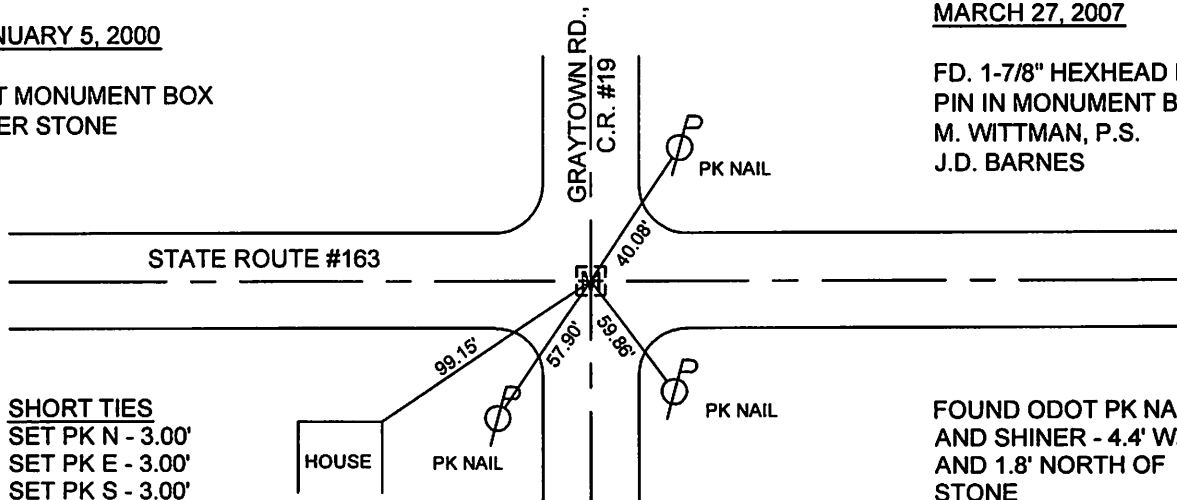
PHOTO OF STONE NOT AVAILABLE

JANUARY 5, 2000

SET MONUMENT BOX  
 OVER STONE

MARCH 27, 2007

FD. 1-7/8" HEXHEAD IRON  
 PIN IN MONUMENT BOX  
 M. WITTMAN, P.S.  
 J.D. BARNES



**SHORT TIES**  
 SET PK N - 3.00'  
 SET PK E - 3.00'  
 SET PK S - 3.00'

FOUND ODOT PK NAIL  
 AND SHINER - 4.4' WEST  
 AND 1.8' NORTH OF  
 STONE