

OTTAWA COUNTY ENGINEERS OFFICE

REFERENCE NO. 4-6-14-A
 NW CORNER POST SECTION 4
 HARRIS TWP.
SHEET 1 OF 1.

ROUTE: C-19 GRAYTOWN RD.
 @ S-163

TOWNSHIP: HARRIS

SECTION: 4

T 6 **NR** 14 **E.**

NORTHING:

EASTING:

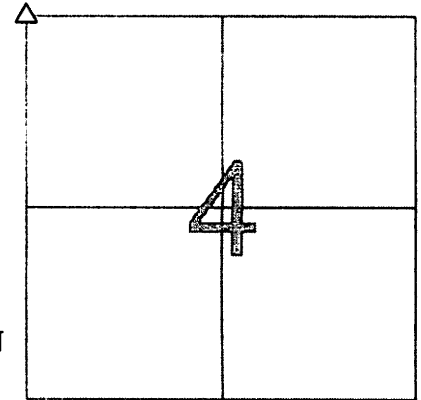
DATUM:

PERSONNEL:

R. NUHFER, P.S.
 M. BROUGH
 A. WEIRICH, P.S. - BEC
 J. GLASS - BEC

DATE / WEATHER / TEMP:

JANUARY 5, 2000
 FAIR
 35° F



MONUMENT INFORMATION

MONUMENT TYPE: FD HARDHEAD STONE
 ON SURFACE - BELOW: 2.17'
 LEFT - CL PAV'T - RIGHT:
 RECTANGULAR STONE: 9" x 6" x 8"

MISC. INFORMATION

FD 2-3/4" HEXHEAD IRON PIN 0.91' BELOW
 SURFACE - REMOVED, FD RAILROAD SPIKE
 UNDER PIN 1.83' BELOW SURFACE - REMOVED
 AND DUG TO STONE

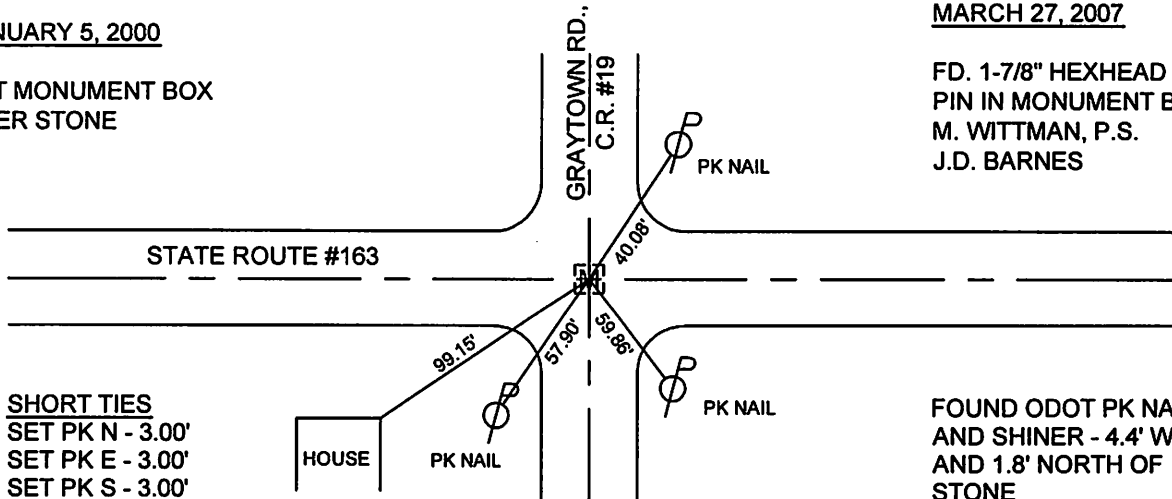
PHOTO OF STONE NOT AVAILABLE

JANUARY 5, 2000

SET MONUMENT BOX
 OVER STONE

MARCH 27, 2007

FD. 1-7/8" HEXHEAD IRON
 PIN IN MONUMENT BOX
 M. WITTMAN, P.S.
 J.D. BARNES



SHORT TIES
 SET PK N - 3.00'
 SET PK E - 3.00'
 SET PK S - 3.00'

FOUND ODOT PK NAIL
 AND SHINER - 4.4' WEST
 AND 1.8' NORTH OF
 STONE