

# OTTAWA COUNTY ENGINEERS OFFICE

REFERENCE NO. 3-6-14-D  
WEST QUARTER POST SEC. 3  
HARRIS TWP.  
SHEET 1 OF 1.

ROUTE: T-21 STANGE RD.

TOWNSHIP: HARRIS

SECTION: 3

T 6 NR 14 E.

**PERSONNEL:**

M. WITTMAN, P.S.  
E. KOCH  
C. MILLER

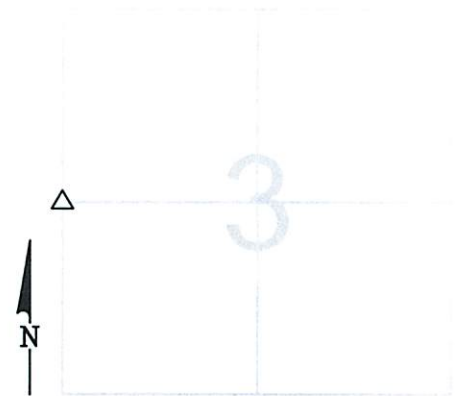
NORTHING:

EASTING:

**DATE / WEATHER / TEMP:**

JULY 1, 2009  
OVERCAST W  
67° F

DATUM:



MONUMENT INFORMATION

MONUMENT TYPE: FD LIMESTONE W/ DH  
ON SURFACE - BELOW: 0.96'  
LEFT - CL PAV'T - RIGHT: 3.45'  
RECTANGULAR / TAPERED STONE: 4 1/4" x 7 1/2"  
  
USED DRILL HOLE.



MISC. INFORMATION

FD. 1/4" CARRIAGE BOLT 0.12' BELOW SURFACE.  
TIED W/ CROSS TIES AND DUG FOR STONE.  
CARRIAGE BOLT WAS 0.05' OF DRILL HOLE.

JULY 1, 2009

SET 1" SQUARE IRON PIN  
IN MONUMENT BOX OVER  
STONE

