

OTTAWA COUNTY ENGINEERS OFFICE

REFERENCE NO. 24-6-14-G
 SOUTHWEST COR. POST SEC. 24
 HARRIS TWP.
SHEET 1 OF 1.

ROUTE: T-9 SCHNEIDER RD.
 @ T-43 SLEMMER-PORTAGE RD.

TOWNSHIP: HARRIS

SECTION: 24

T 6 **NR** 14 **E.**

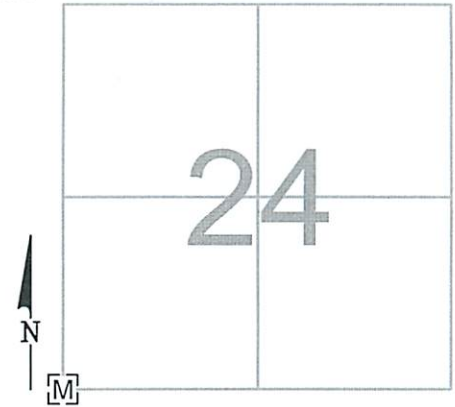
NORTHING:

EASTING:

DATUM:

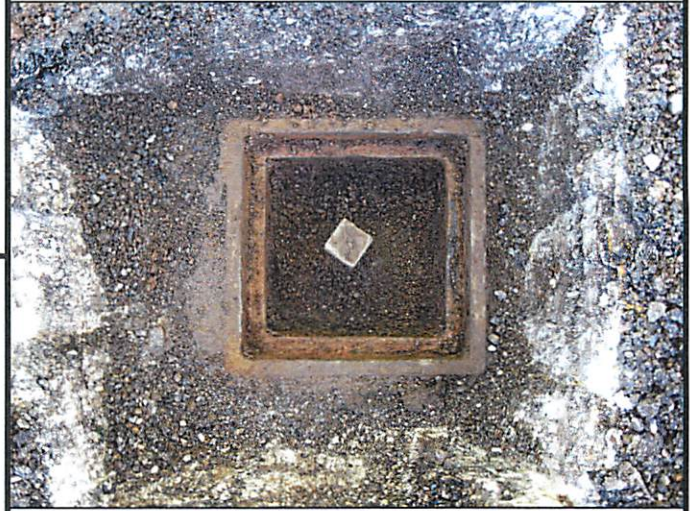
PERSONNEL:
 M. WITTMAN, P.S.
 J. ALLEN

DATE / WEATHER / TEMP:
 APRIL 26, 2018
 SUNNY
 65° F



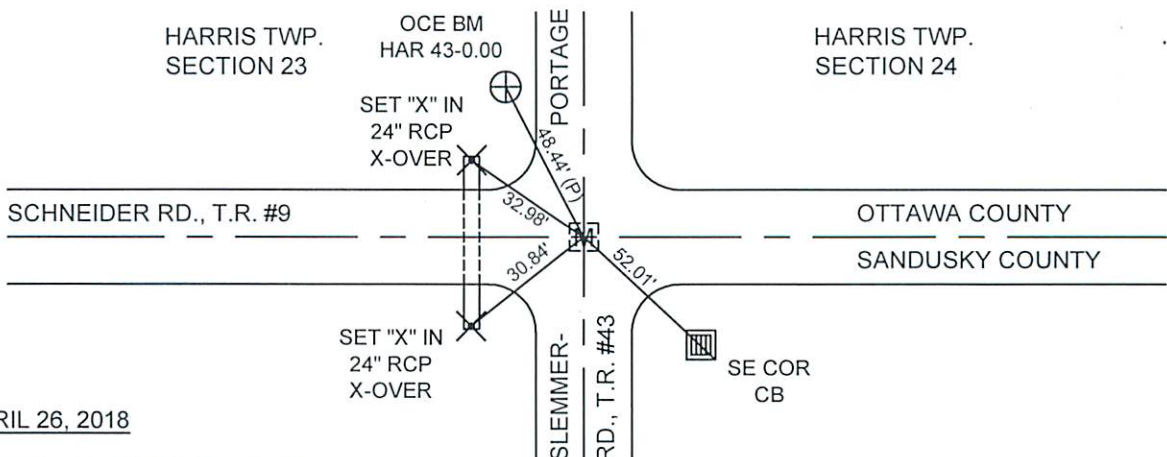
MONUMENT INFORMATION

MONUMENT TYPE: FD. 1" SQ. IRON PIN IN MON BOX
 ON SURFACE - BELOW: 0.29'
LEFT - CL PAV'T - RIGHT: 5.30' - SLEMMER-PORTAGE
LEFT - CL PAV'T - RIGHT: SCHNEIDER RD.



MISC. INFORMATION

(7-17/19-1963) FD. 6" Ø SANDUSKY COUNTY
 MONUMENT W/ BRASS PLATE - SET IRON PIN AND
 MONUMENT BOX OVER FD MONUMENT.
 R. STEINMILLER, C. HERL, S. BAHNSEN



APRIL 26, 2018

ADDED RISERS TO BRING TO
 SURFACE