

# OTTAWA COUNTY ENGINEERS OFFICE

REFERENCE NO. 24-6-14-F  
E QUARTER POST SECTION 24  
HARRIS TWP.  
SHEET 1 OF 1.

ROUTE: C-42 HARRIS-SALEM RD.

TOWNSHIP: HARRIS

SECTION: 24

T 6 NR 14 E.

**PERSONNEL:**

M. WITTMAN, P.S.  
J. ALLEN  
K. SMITH  
S. ULLRICH

NORTHING:

EASTING:

DATUM:



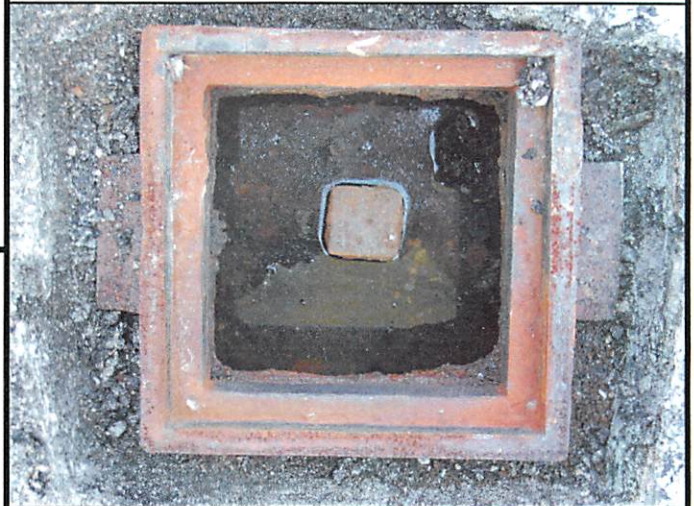
**DATE / WEATHER / TEMP:**

JULY 18, 2007  
SUNNY  
75° F

MONUMENT INFORMATION

MONUMENT TYPE: FD 1" SQ. IRON PIN IN MON BOX  
ON SURFACE - BELOW: 0.33'  
LEFT - CL PAV'T - RIGHT: 1'

IRON PIN HAS DRILL HOLE



MISC. INFORMATION

1964 - SEARCH FOR STONE FOUND NOTHING.  
5-20-1971 - SET RAILROAD SPIKE PER OLD TIES.  
7-23-1971 - SET IRON PIN IN MONUMENT BOX TO  
REPLACE RAILROAD SPIKE

