

# OTTAWA COUNTY ENGINEERS OFFICE

REFERENCE NO. 23-6-14-1  
 SOUTHEAST COR. POST SEC. 23  
 HARRIS TWP.  
 SHEET 1 OF 1.

ROUTE: T-9 SCHNEIDER RD.  
 @ T-43 SLEMMER-PORTAGE RD.

TOWNSHIP: HARRIS

SECTION: 23

T 6 NR 14 E.

NORTHING:

EASTING:

DATUM:



PERSONNEL:  
 M. WITTMAN, P.S.  
 J. ALLEN

DATE / WEATHER / TEMP:  
 APRIL 26, 2018  
 SUNNY  
 65° F

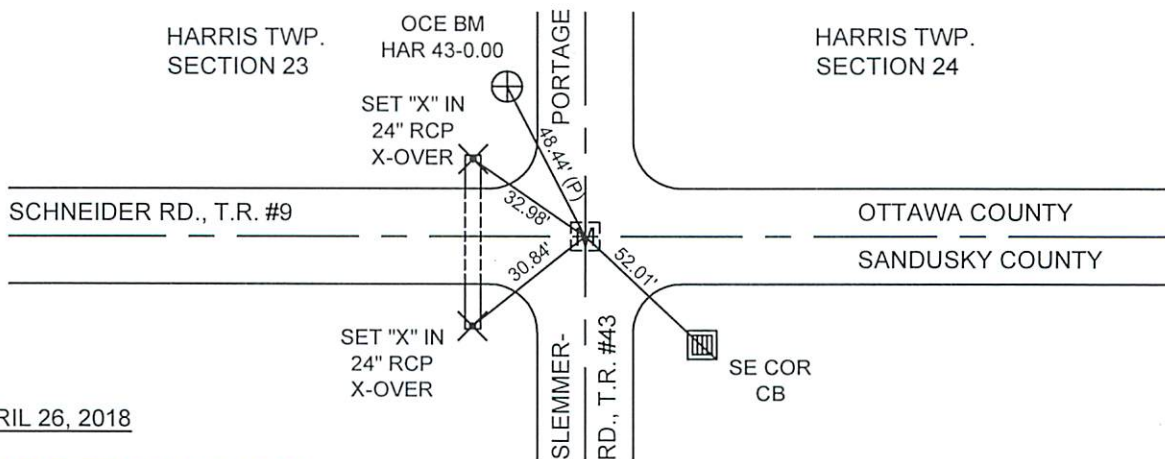
### MONUMENT INFORMATION

MONUMENT TYPE: FD. 1" SQ. IRON PIN IN MON BOX  
 ON SURFACE - BELOW: 0.29'  
LEFT - CL PAV'T - RIGHT: 5.30' - SLEMMER-PORTAGE  
LEFT - CL PAV'T - RIGHT: SCHNEIDER RD.



### MISC. INFORMATION

(7-17/19-1963) FD. 6" Ø SANDUSKY COUNTY  
 MONUMENT W/ BRASS PLATE - SET IRON PIN AND  
 MONUMENT BOX OVER FD MONUMENT.  
 R. STEINMILLER, C. HERL, S. BAHNSEN



APRIL 26, 2018

ADDED RISERS TO BRING TO  
 SURFACE