

# OTTAWA COUNTY ENGINEERS OFFICE

**REFERENCE NO.** 21-6-14-C  
 NORTHEAST COR. SECTION 21  
 HARRIS TWP.  
**SHEET** 1 OF 1.

**ROUTE:** C-6 ELMORE EASTERN RD. @  
 T-45 HESSVILLE RD.

**TOWNSHIP:** HARRIS

**SECTION:** 21

**T** 6 **NR** 14 **E.**

**PERSONNEL:**  
 M. WITTMAN, P.S.  
 J. UNDERWOOD, P.S.  
 M. BROUGH  
 R. LAJTI, JR.

**NORTHING:**

**EASTING:**

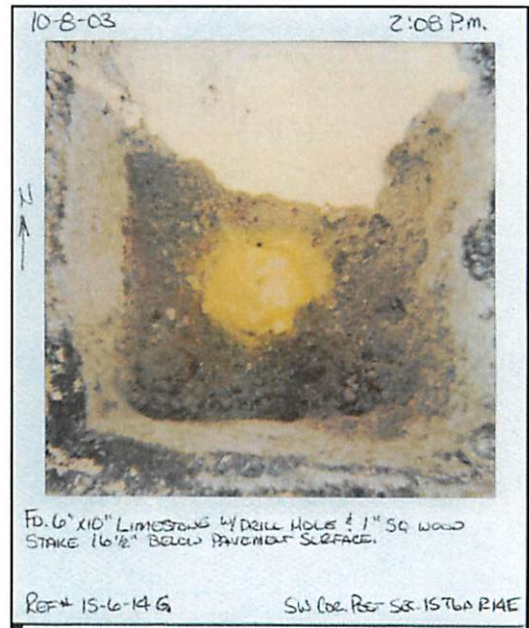
**DATUM:**



**DATE / WEATHER / TEMP:**  
 OCTOBER 8, 2003  
 SUNNY / BREEZY  
 71° F

### MONUMENT INFORMATION

MONUMENT TYPE: FD LIMESTONE W/ DRILL HOLE  
 ON SURFACE - BELOW: 1.37'  
LEFT - CL PAV'T - RIGHT: (T-45) RIGHT (C-6)  
  
 STONE: 6" x 10" - HAD 1" SQ. WOODEN STAKE  
 NEXT TO STONE.

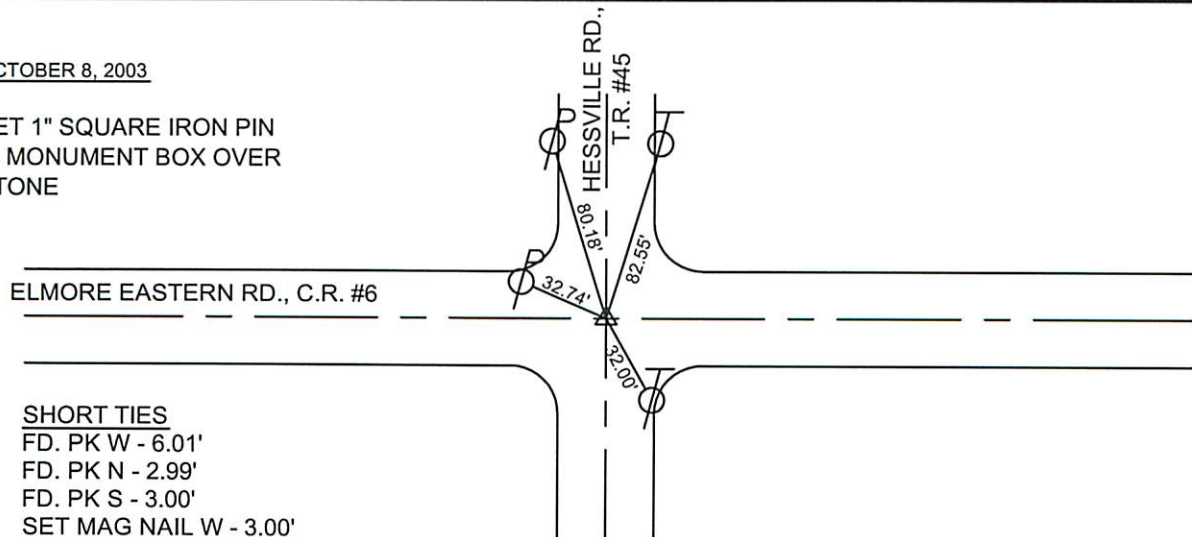


### MISC. INFORMATION

FD. RAILROAD SPIKE 1" BELOW SURFACE,  
 REMOVED RAILROAD SPIKE AND CONTINUED TO  
 STONE.

OCTOBER 8, 2003

SET 1" SQUARE IRON PIN  
 IN MONUMENT BOX OVER  
 STONE



**SHORT TIES**  
 FD. PK W - 6.01'  
 FD. PK N - 2.99'  
 FD. PK S - 3.00'  
 SET MAG NAIL W - 3.00'