

# OTTAWA COUNTY ENGINEERS OFFICE

**REFERENCE NO.** 15-6-14-G  
 SOUTHWEST COR. SECTION 18  
 HARRIS TWP.  
**SHEET** 1 OF 1.

**ROUTE:** C-6 ELMORE EASTERN RD. @  
 T-45 HESSVILLE RD.

**TOWNSHIP:** HARRIS

**SECTION:** 15

**T** 6 **NR** 14 **E.**

**NORTHING:**

**EASTING:**

**DATUM:**



**PERSONNEL:**

M. WITTMAN, P.S.  
 J. UNDERWOOD, P.S.  
 M. BROUGH  
 R. LAJTI, JR.

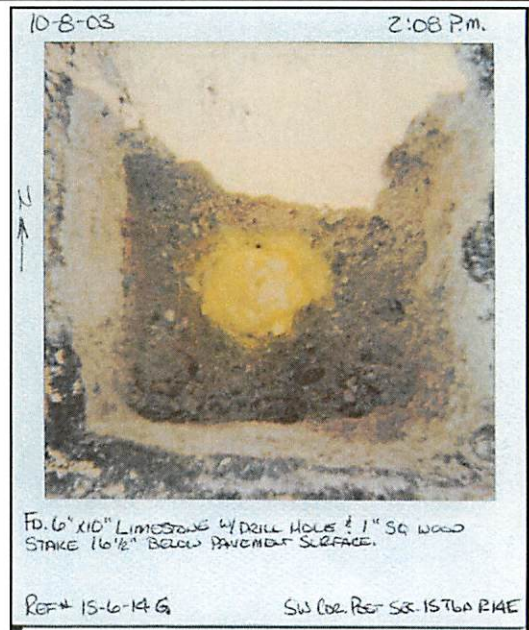
**DATE / WEATHER / TEMP:**

OCTOBER 8, 2003  
 SUNNY / BREEZY  
 71° F

MONUMENT INFORMATION

MONUMENT TYPE: FD LIMESTONE W/ DRILL HOLE  
 ON SURFACE - BELOW: 1.37'  
LEFT - CL PAV'T - RIGHT: (T-45) RIGHT (C-6)

STONE: 6" x 10" - HAD 1" SQ. WOODEN STAKE  
 NEXT TO STONE.



MISC. INFORMATION

FD. RAILROAD SPIKE 1" BELOW SURFACE,  
 REMOVED RAILROAD SPIKE AND CONTINUED TO  
 STONE.

OCTOBER 8, 2003

SET 1" SQUARE IRON PIN  
 IN MONUMENT BOX OVER  
 STONE

ELMORE EASTERN RD., C.R. #6

SHORT TIES

FD. PK W - 6.01'  
 FD. PK N - 2.99'  
 FD. PK S - 3.00'  
 SET MAG NAIL W - 3.00'

