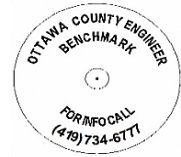




# OTTAWA COUNTY BENCHMARK DATA SHEET



## HAR 43-2.0

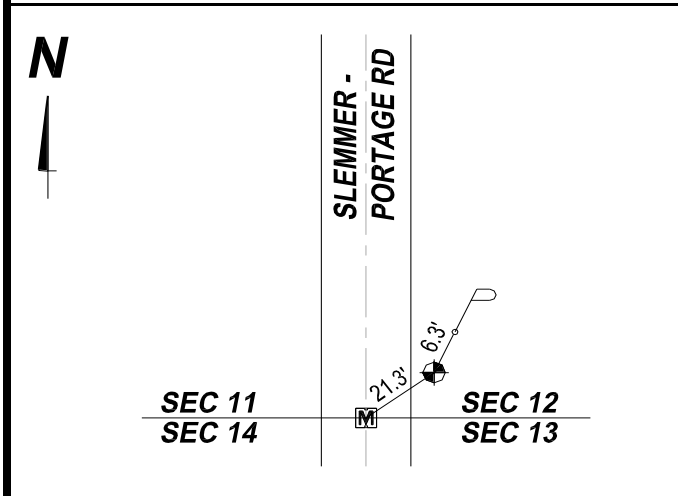
Township	Section	Town	Range	Type of Monument
HARRIS	13	T6N	R14E	3 1/4" Domed Bronze Disk in Concrete (OCE Spec. BM-1)
<b>Set By</b>	<b>Shot By</b>	<b>Calculated</b>	<b>Calculated By</b>	<b>Published</b>
OCE / OCHD	J. Allen	March 8, 2012	M. J. Wittman, P.S.	March 16, 2012

**Location**

East side of Slemmer-Portage Rd., T.R. #43, northeast of the Southeast corner of Section 12, T6N R14E

Vertical Control		
Vertical Datum	Method	Elevation (U.S. Survey Feet)
NAVD 88	GPS	595.37

Horizontal Control			
Horizontal Datum	Zone	Northing	Easting
NAD 83 CORS 96	OHIO NORTH 3401	664,099.591	1,776,176.119
<b>Method</b>	<b>Latitude</b>	<b>Longitude</b>	
GPS / CORPSCON	41° 29' 14.44112" N	83° 12' 07.08565" W	
<b>Geoid</b>	<b>Scale Factor</b>	<b>Convergence</b>	
GEOID 09	0.999965917	- 00° 27' 40.16971"	



**NOTES:**

1. Monument set: August 23, 2011
2. Data Collected: 2-3-12, 2-14-12, 2-28-12