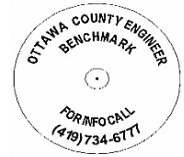


# OTTAWA COUNTY BENCHMARK DATA SHEET



## HAR 42-2.6

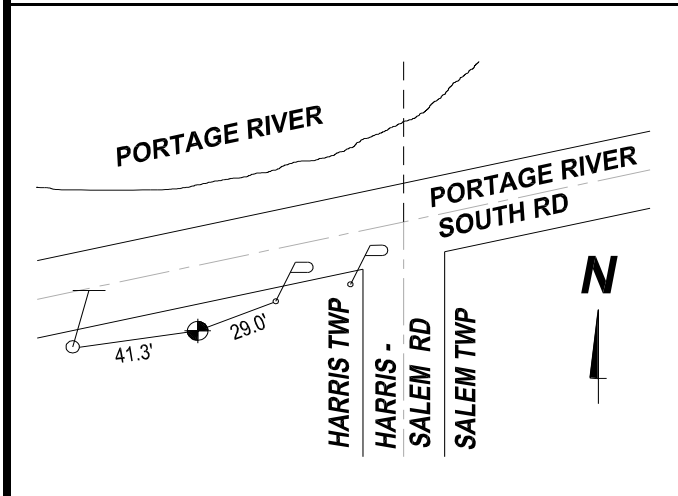
<b>Township</b>	<b>Section</b>	<b>Town</b>	<b>Range</b>	<b>Type of Monument</b>
HARRIS	12	T6N	R14E	3 1/4" Domed Bronze Disk in Concrete (OCE Spec. BM-1)
<b>Set By</b>	<b>Shot By</b>	<b>Calculated</b>	<b>Calculated By</b>	<b>Published</b>
OCE / OCHD	J. Allen	March 8, 2012	M. J. Wittman, P.S.	March 16, 2012

**Location**

South side of Portage River South Rd., T.R. # 18, west of Harris-Salem Rd., C.R. #42

<b>Vertical Control</b>		
<b>Vertical Datum</b>	<b>Method</b>	<b>Elevation (U.S. Survey Feet)</b>
NAVD 88	GPS	589.23

<b>Horizontal Control</b>			
<b>Horizontal Datum</b>	<b>Zone</b>	<b>Northing</b>	<b>Easting</b>
NAD 83 CORS 96	OHIO NORTH 3401	667,273.198	1,781,162.661
<b>Method</b>	<b>Latitude</b>	<b>Longitude</b>	
GPS / CORPSCON	41° 29' 46.18715" N	83° 11' 01.89348" W	
<b>Geoid</b>	<b>Scale Factor</b>	<b>Convergence</b>	
GEOID 09	0.999967055	- 00° 26' 57.34169"	



**NOTES:**

1. Monument set: August 23, 2011
2. Data Collected: 2-6-12, 2-14-12, 2-28-12