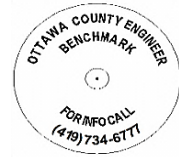


OTTAWA COUNTY BENCHMARK DATA SHEET



HAR 23-0.0

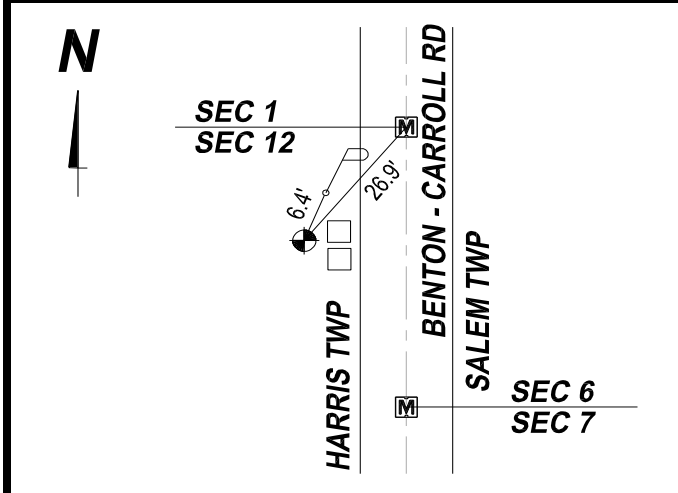
Township	Section	Town	Range	Type of Monument
HARRIS	12	T6N	R14E	3 1/4" Domed Bronze Disk in Concrete (OCE Spec. BM-1)
Set By	Shot By	Calculated	Calculated By	Published
OCE / OCHD	J. Allen	March 8, 2012	M. J. Wittman, P.S.	March 16, 2012

Location

West side of Benton-Carroll Rd., C.R. #23, southwest of the Northeast Corner of Section 12, T6N R14E

Vertical Control		
Vertical Datum	Method	Elevation (U.S. Survey Feet)
NAVD 88	GPS	590.03

Horizontal Control			
Horizontal Datum	Zone	Northing	Easting
NAD 83 CORS 96	OHIO NORTH 3401	669,377.282	1,781,264.078
Method	Latitude	Longitude	
GPS / CORPSCON	41° 30' 06.98290" N	83° 11' 00.77747" W	
Geoid	Scale Factor	Convergence	
GEOID 09	0.999967814	- 00° 26' 56.60853"	



- NOTES:**
1. Monument set: July 6, 2011
 2. Data Collected: 2-2-12, 2-10-12, 2-27-12