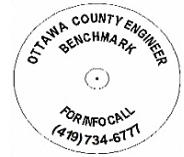




# OTTAWA COUNTY BENCHMARK DATA SHEET



## HAR 214-0.6

Township	Section	Town	Range	Type of Monument
HARRIS	24	T6N	R13E	3 1/4" Domed Bronze Disk in Concrete (OCE Spec. BM-1)
<b>Set By</b>	<b>Shot By</b>	<b>Calculated</b>	<b>Calculated By</b>	<b>Published</b>
OCE / OCHD	J. Allen	March 8, 2012	M. J. Wittman, P.S.	March 16, 2012

### Location

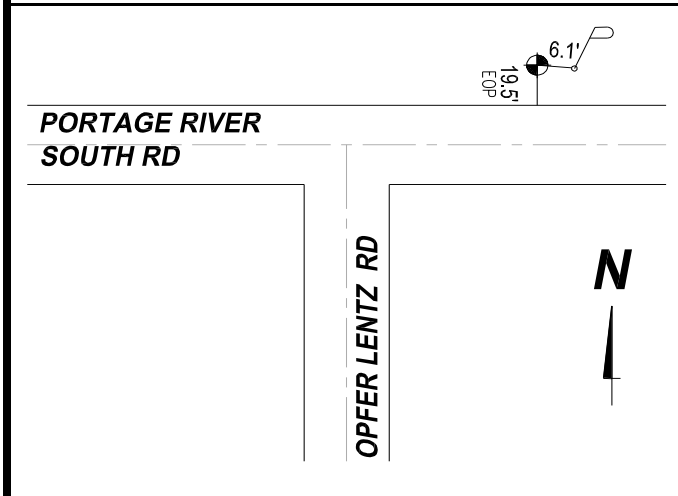
North side of Portage River South Rd., C.R. #18, east of Opfer-Lentz Rd., T.R. #214

### Vertical Control

Vertical Datum	Method	Elevation (U.S. Survey Feet)
NAVD 88	GPS	615.61

### Horizontal Control

Horizontal Datum	Zone	Northing	Easting
NAD 83 CORS 96	OHIO NORTH 3401	656,594.007	1,744,184.132
<b>Method</b>	<b>Latitude</b>	<b>Longitude</b>	
GPS / CORPSCON	41° 27' 57.53241" N	83° 19' 06.50359" W	
<b>Geoid</b>	<b>Scale Factor</b>	<b>Convergence</b>	
GEOID 09	0.999963257	- 00° 32' 15.70646"	



- NOTES:**
1. Monument set: August 16, 2011
  2. Data Collected: 2-2-12, 2-9-12, 2-17-12