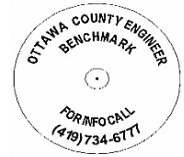


# OTTAWA COUNTY BENCHMARK DATA SHEET



## HAR 213-2.0

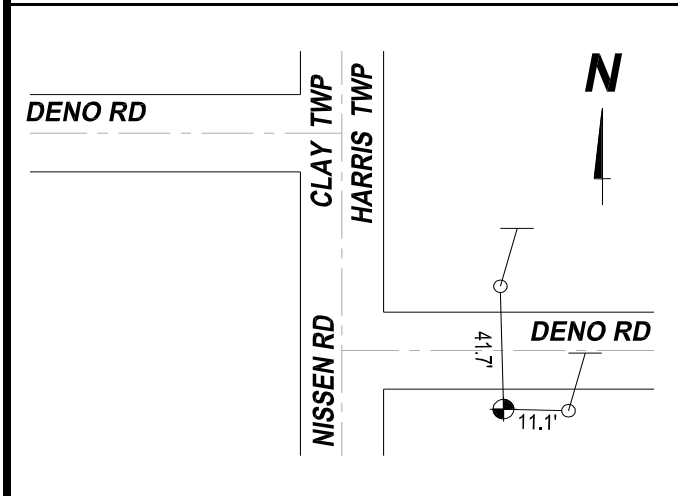
<b>Township</b>	<b>Section</b>	<b>Town</b>	<b>Range</b>	<b>Type of Monument</b>
HARRIS	7	T6N	R14E	3 1/4" Domed Bronze Disk in Concrete (OCE Spec. BM-1)
<b>Set By</b>	<b>Shot By</b>	<b>Calculated</b>	<b>Calculated By</b>	<b>Published</b>
OCE / OCHD	J. Allen	March 8, 2012	M. J. Wittman, P.S.	March 16, 2012

**Location**

South side of Deno Rd., T.R. #57, east of Nissen Rd., C.R. #213

Vertical Control		
<b>Vertical Datum</b>	<b>Method</b>	<b>Elevation (U.S. Survey Feet)</b>
NAVD 88	GPS	611.21

Horizontal Control			
<b>Horizontal Datum</b>	<b>Zone</b>	<b>Northing</b>	<b>Easting</b>
NAD 83 CORS 96	OHIO NORTH 3401	669,453.084	1,749,439.778
<b>Method</b>	<b>Latitude</b>	<b>Longitude</b>	
GPS / CORPSCON	41° 30' 05.05808" N	83° 17' 59.02072" W	
<b>Geoid</b>	<b>Scale Factor</b>	<b>Convergence</b>	
GEOID 09	0.999967743	- 00° 31' 31.37356"	



- NOTES:**
1. Monument set: August 15, 2011
  2. Data Collected: 2-2-12, 2-9-12, 2-17-12