

# OTTAWA COUNTY BENCHMARK DATA SHEET



## HAR 21-2.0

<b>Township</b>	<b>Section</b>	<b>Town</b>	<b>Range</b>	<b>Type of Monument</b>
HARRIS	4	T6N	R14E	3 1/4" Domed Bronze Disk in Concrete (OCE Spec. BM-1)
<b>Set By</b>	<b>Shot By</b>	<b>Calculated</b>	<b>Calculated By</b>	<b>Published</b>
OCE / OCHD	J. Allen	March 14, 2012	M. J. Wittman, P.S.	March 16, 2012

### Location

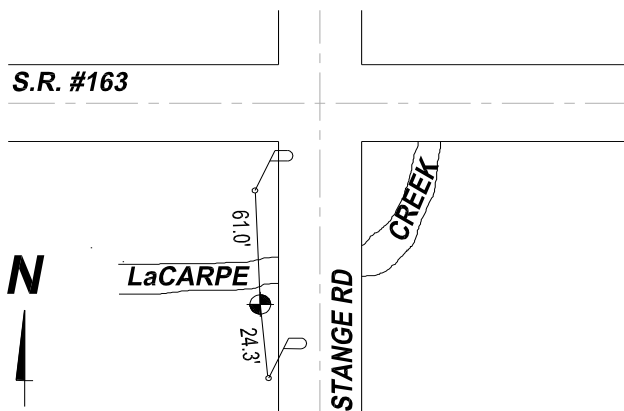
West side of Stange Rd., T.R. #21, south of State Route #163  
(South of LaCarpe Creek)

### Vertical Control

<b>Vertical Datum</b>	<b>Method</b>	<b>Elevation (U.S. Survey Feet)</b>
NAVD 88	GPS	600.59

### Horizontal Control

<b>Horizontal Datum</b>	<b>Zone</b>	<b>Northing</b>	<b>Easting</b>
NAD 83 CORS 96	OHIO NORTH 3401	674,600.730	1,765,383.112
<b>Method</b>	<b>Latitude</b>	<b>Longitude</b>	
GPS / CORPSCON	41° 30' 57.30712" N	83° 14' 30.06968" W	
<b>Geoid</b>	<b>Scale Factor</b>	<b>Convergence</b>	
GEOID 09	0.999969692	- 00° 29' 14.10311"	



#### **NOTES:**

1. Monument set: August 15, 2011
2. Data Collected: 2-10-12, 2-24-12, 3-9-12