



# OTTAWA COUNTY BENCHMARK DATA SHEET



## HAR 19-1.0

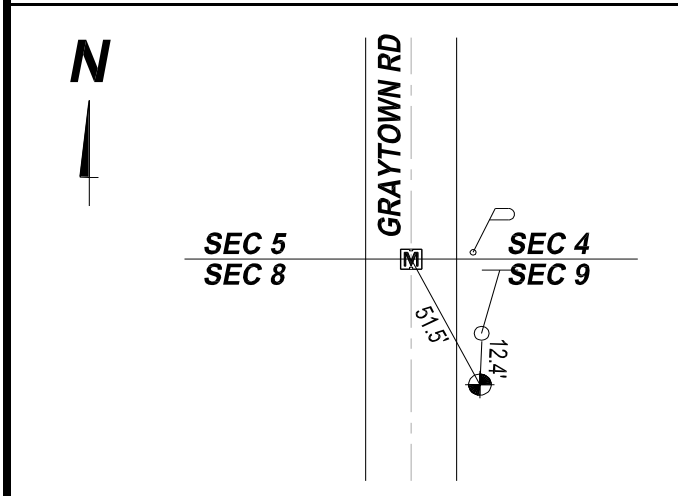
|                 |                |                   |                      |  |
|-----------------|----------------|-------------------|----------------------|--|
| <b>Township</b> | <b>Section</b> | <b>Town</b>       | <b>Range</b>         | <b>Type of Monument</b>                                  |
| HARRIS          | 9              | T6N               | R14E                 | 3 1/4" Domed Bronze Disk in Concrete<br>(OCE Spec. BM-1) |
| <b>Set By</b>   | <b>Shot By</b> | <b>Calculated</b> | <b>Calculated By</b> | <b>Published</b>   |
| OCE / OCHD      | J. Allen       | March 14, 2012    | M. J. Wittman, P.S.  | March 16, 2012   |

**Location**

East side of Graytown Rd., T.R. #19, southeast of the Northwest Corner of Section 9, T6N R14E

| Vertical Control      |               |                                     |
|-----------------------|---------------|-------------------------------------|
| <b>Vertical Datum</b> | <b>Method</b> | <b>Elevation (U.S. Survey Feet)</b> |
| NAVD 88               | GPS           | 604.45                              |

| Horizontal Control      |                     |                     |                |
|-------------------------|---------------------|---------------------|----------------|
| <b>Horizontal Datum</b> | <b>Zone</b>         | <b>Northing</b>     | <b>Easting</b> |
| NAD 83 CORS 96          | OHIO NORTH 3401     | 669,451.050         | 1,760,191.516  |
| <b>Method</b>           | <b>Latitude</b>     | <b>Longitude</b>    |                |
| GPS / CORPSCON          | 41° 30' 05.98814" N | 83° 15' 37.72205" W |                |
| <b>Geoid</b>            | <b>Scale Factor</b> | <b>Convergence</b>  |                |
| GEOID 09                | 0.999967778         | - 00° 29' 58.54735" |                |



**NOTES:**

1. Monument set: August 15, 2011
2. Data Collected: 2-17-12, 3-9-12, 3-12-12