

OTTAWA COUNTY ENGINEERS OFFICE

REFERENCE NO. 30-7-16-D
 WEST QUARTER POST SEC. 30
 ERIE TWP.
 SHEET 1 OF 1.

ROUTE: C-26 CARROLL-ERIE RD.

TOWNSHIP: ERIE

SECTION: 30

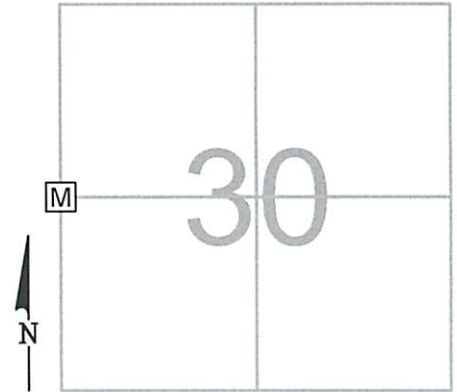
T 7 NR 16 E.

PERSONNEL:
 M. WITTMAN, P.S.
 J. ALLEN

NORTHING:

EASTING:

DATUM:

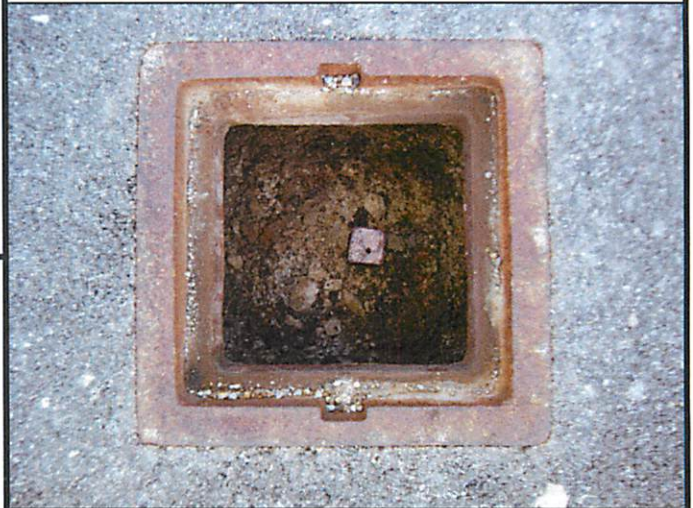


DATE / WEATHER / TEMP:

JUUN 12, 2014
 OVERCAST, W-NW
 77° F

MONUMENT INFORMATION

MONUMENT TYPE: SET 1" SQ IRON PIN IN MON BOX
 ON SURFACE - BELOW:
LEFT - CL PAV'T - RIGHT: 6.70'



MISC. INFORMATION

FD RR SPK 0.50' BELOW SURFACE, TIED W/ X-TIES AND DUG FOR PIN OR STONE. DUG DOWN 1.32' TO CLAY AND PRODDED ANOTHER 2.5' DOWN AT 3" GRID AND DID NOT FIND PIN OR STONE. SHOT THREE CORNERS ON EAST LINE CARROLL SECTION 25 AND SW AND NW CORNER ERIE 30. RAN CALCULATIONS AND PRORATED LOCATION USING SINGLE PROPORTIONATE MEASURE. CALCULATED DISTANCE EXACTLY MATCHED DISTANCE PROVIDED ON 1955 SURVEY MADE BY C. A. STEVENSON. SET 1" SQUARE IRON PIN IN MONUMENT BOX ON LINE BETWEEN SE CORNER AND E QUARTER POST OF CARROLL SECTION 25. RR SPIKE FD WAS 0.09' SOUTH AND 0.191 WEST OF CALCULATED POINT.

THIS IS A CLOSING CORNER.

JUNE 12, 2014

SET 1" SQUARE IRON PIN
 IN MONUMENT BOX

E 1/4 POST
 CARROLL 25

BIER RD., T.R. #97

