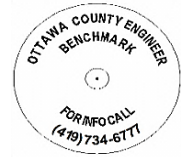




# OTTAWA COUNTY BENCHMARK DATA SHEET



## ERI 14-1.0

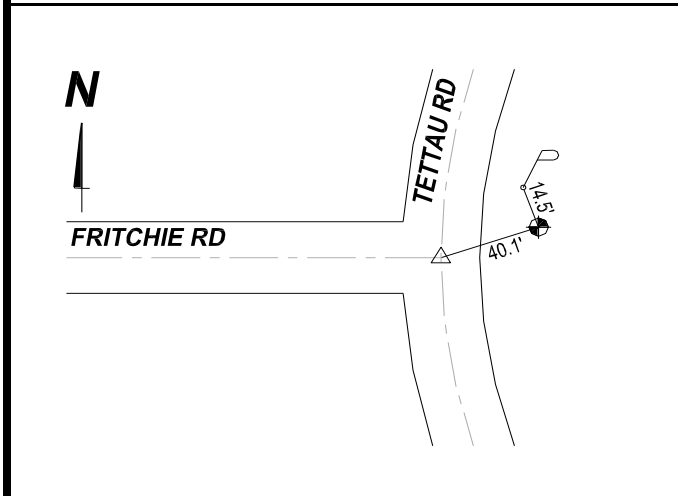
<b>Township</b>	<b>Section</b>	<b>Town</b>	<b>Range</b>	<b>Type of Monument</b>
Erie	29	T7N	R16E	3 1/4" Domed Bronze Disk in Concrete (OCE Spec. BM-1)
<b>Set By</b>	<b>Shot By</b>	<b>Calculated</b>	<b>Calculated By</b>	<b>Published</b>
OCE / OCHD	J. Allen	March 8, 2012	M. J. Wittman, P.S.	March 16, 2012

**Location**

Northeast corner of the intersection of Tettau Rd., C.R. #14 & Fritchie Rd., T.R. #131

Vertical Control		
<b>Vertical Datum</b>	<b>Method</b>	<b>Elevation (U.S. Survey Feet)</b>
NAVD 88	GPS	576.78

Horizontal Control			
<b>Horizontal Datum</b>	<b>Zone</b>	<b>Northing</b>	<b>Easting</b>
NAD 83 CORS 96	OHIO NORTH 3401	679,442.417	1,821,052.937
<b>Method</b>	<b>Latitude</b>	<b>Longitude</b>	
GPS / CORPSCON	41° 31' 49.17858" N	83° 02' 18.67802" W	
<b>Geoid</b>	<b>Scale Factor</b>	<b>Convergence</b>	
GEOID 09	0.999971691	- 00° 21' 13.61513"	



**NOTES:**

1. Monument set: August 23, 2011
2. Data Collected: 2-3-12, 2-13-12, 2-28-12