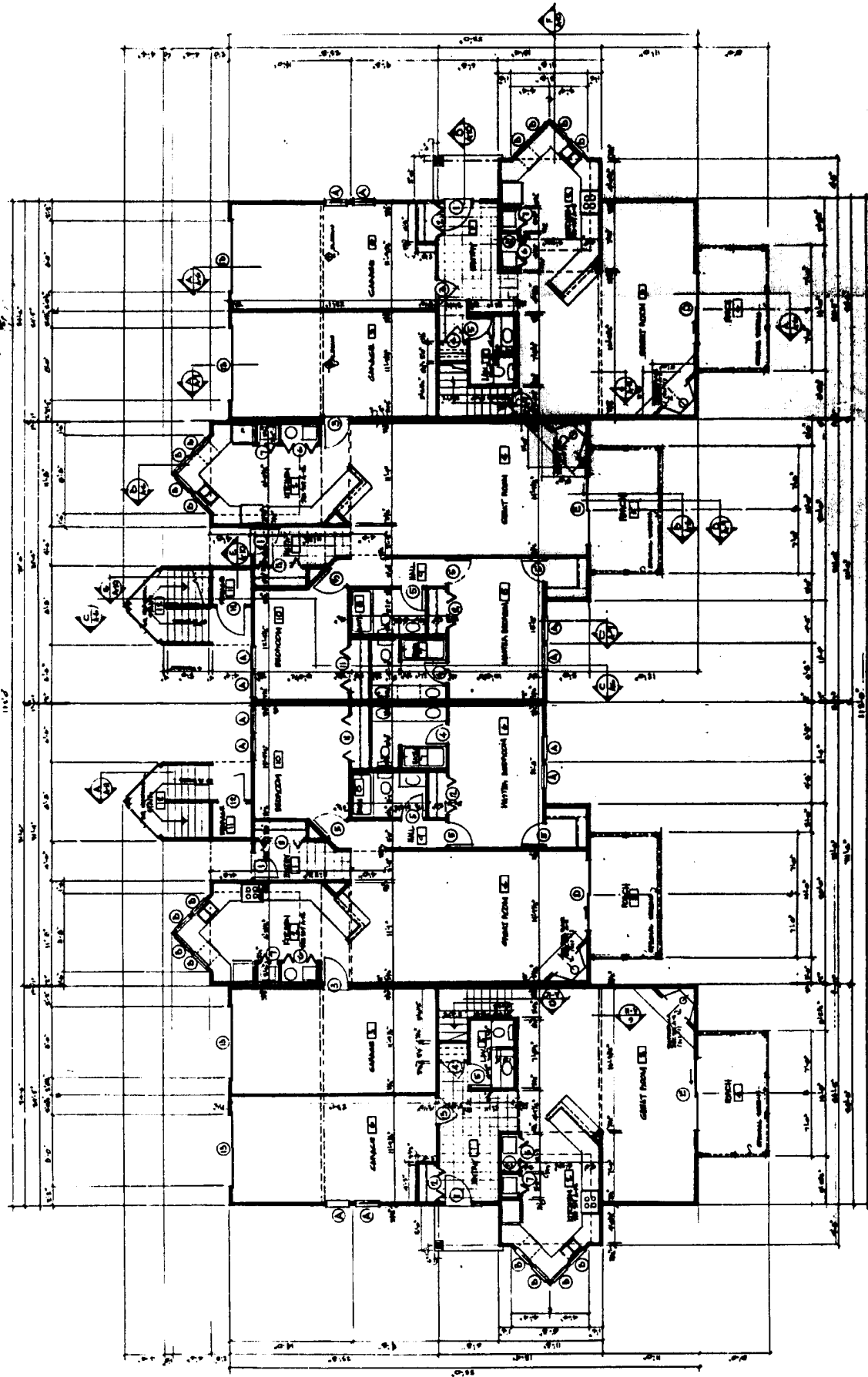


Vol 29 Pg. 24B

55175
Received: Nov. 16, 1987
Time: 2:19 P.M.
Received: Nov. 17, 1987
Time: 11:00 A.M.
VOL. 29 Pg. 24B REC. 5416
VICENTIA M. PAGE
RECEIVED FROM COUNTY 1010
Professional Agency



DO NOT SCALE REDUCED COPY

BUILDING "A" FIRST FLOOR PLAN - CONTINUED

A-1	
1/4" = 1'-0"	1/8" = 1'-0"
1/16" = 1'-0"	1/32" = 1'-0"

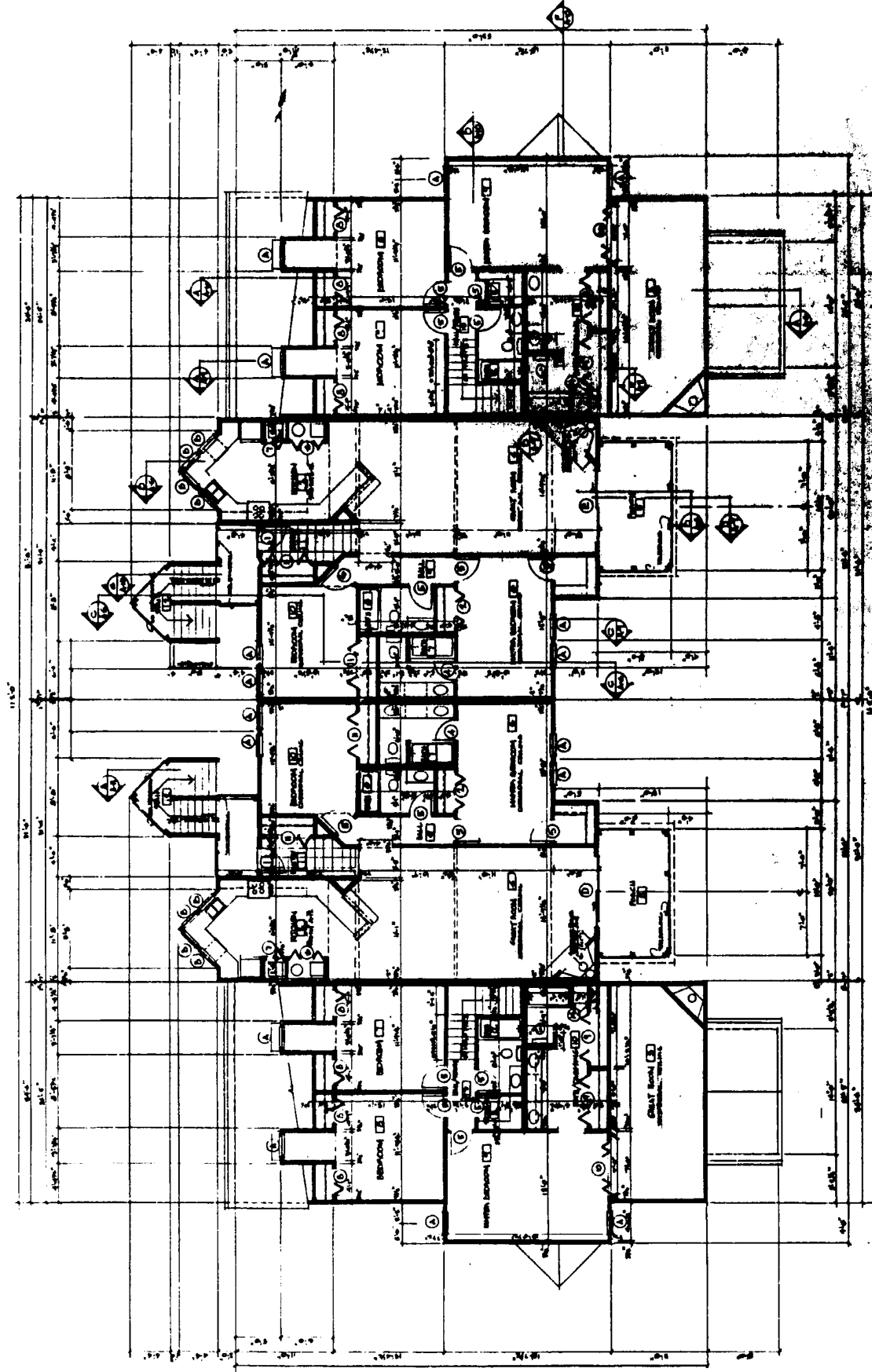


BUILDING "A" FIRST FLOOR PLAN

BAY POINT
CONDOMINIUMS
MANAGEMENT, INC.

RECEIVED: Nov. 16, 1989
Time: 2:15 P.M.
Recorded: Nov. 17, 1989
Vol. 29 Pg. 24-C. Fee: \$40.00
VILLAGE A, Ph. 2
RECORDS SECTION, 100
Quality: *Originals, duplicate*

NO. 1
NO. 2
NO. 3
NO. 4
NO. 5
NO. 6
NO. 7
NO. 8
NO. 9
NO. 10
NO. 11
NO. 12
NO. 13
NO. 14
NO. 15
NO. 16
NO. 17
NO. 18
NO. 19
NO. 20
NO. 21
NO. 22
NO. 23
NO. 24
NO. 25
NO. 26
NO. 27
NO. 28
NO. 29
NO. 30
NO. 31
NO. 32
NO. 33
NO. 34
NO. 35
NO. 36
NO. 37
NO. 38
NO. 39
NO. 40
NO. 41
NO. 42
NO. 43
NO. 44
NO. 45
NO. 46
NO. 47
NO. 48
NO. 49
NO. 50
NO. 51
NO. 52
NO. 53
NO. 54
NO. 55
NO. 56
NO. 57
NO. 58
NO. 59
NO. 60
NO. 61
NO. 62
NO. 63
NO. 64
NO. 65
NO. 66
NO. 67
NO. 68
NO. 69
NO. 70
NO. 71
NO. 72
NO. 73
NO. 74
NO. 75
NO. 76
NO. 77
NO. 78
NO. 79
NO. 80
NO. 81
NO. 82
NO. 83
NO. 84
NO. 85
NO. 86
NO. 87
NO. 88
NO. 89
NO. 90
NO. 91
NO. 92
NO. 93
NO. 94
NO. 95
NO. 96
NO. 97
NO. 98
NO. 99
NO. 100



BUILDING 'A' SECOND FLOOR PLAN

DO NOT SCALE REDUCED COPY



BAY POINT
CONDOMINIUMS
MANAGEMENT

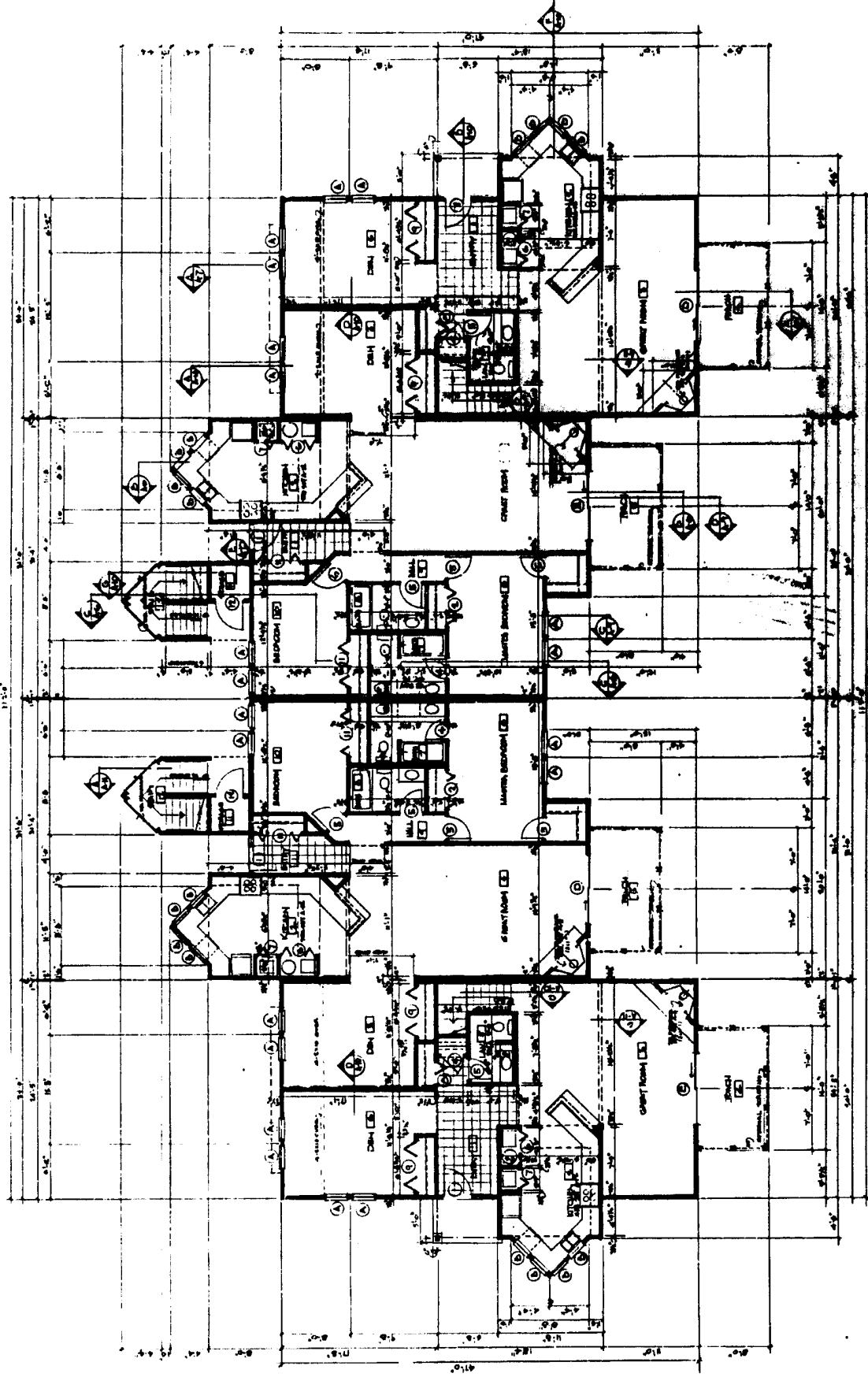
BUILDING 'A' SECOND FLOOR PLAN

A-2

Vol. 29 PG 24D

20173
RECEIVED: Nov. 14, 1989
RECEIVED: Nov. 17, 1989
Vol. 29 PG. 24-D P&E - JMB
VICTORIA A. DAVIS
REGISTERED ARCHITECT, B.C.
Quality Subcontract Management

ALL DIMENSIONS ARE IN FEET AND INCHES
UNLESS OTHERWISE SPECIFIED
DO NOT SCALE
DATE: 11/14/89
BY: V.A.D.
CHECKED: J.M.B.
PROJECT: BAY POINT CONDOMINIUMS
SHEET: 24-D



DO NOT SCALE REDUCED COPY

BUILDING 'B' FIRST FLOOR PLAN

DATE	BY	NO.

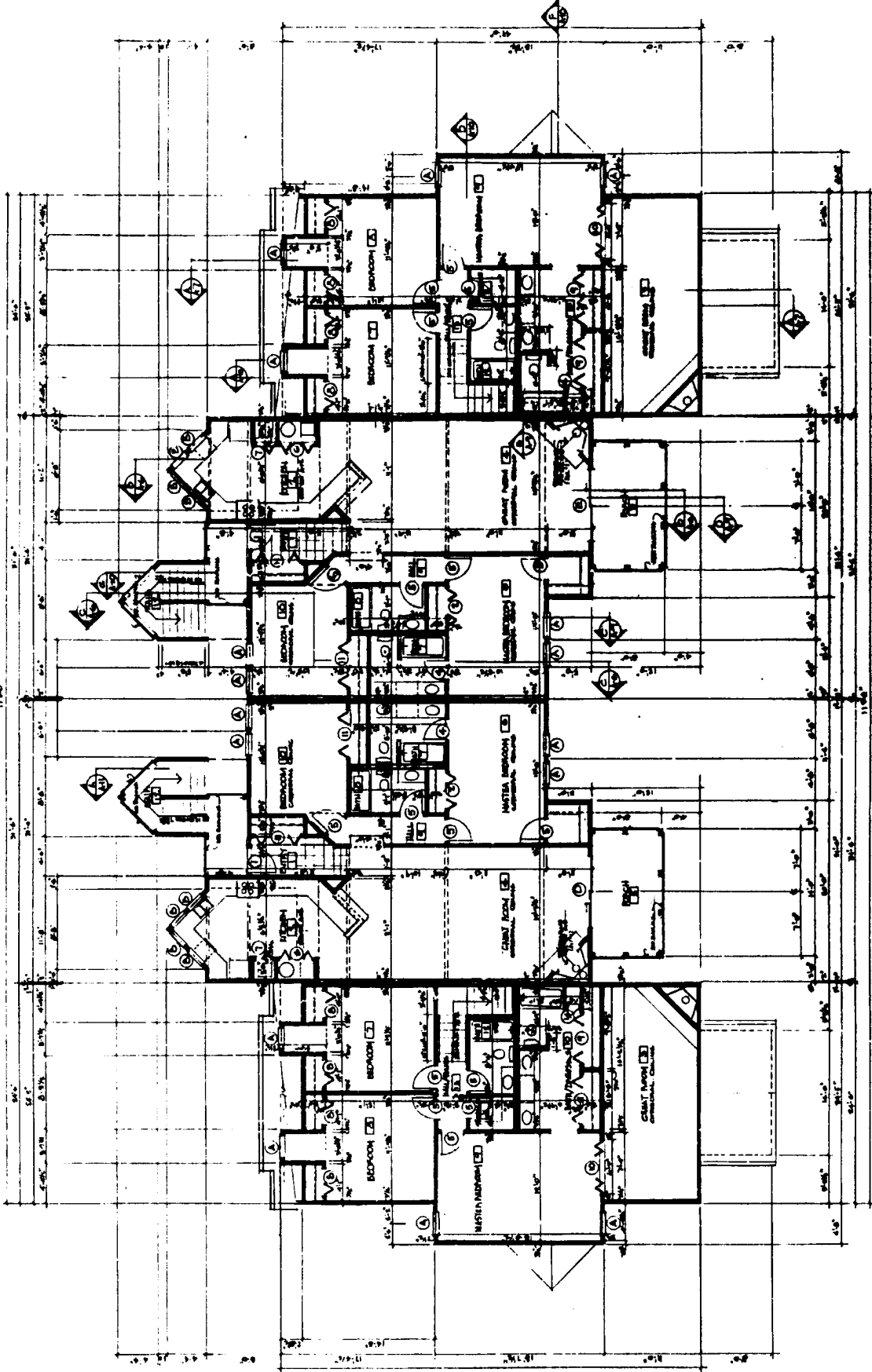


BUILDING 'B' FIRST FLOOR PLAN



58173
 RECEIVED: Nov 16, 1989
 FILE: 5173
 RECORDED: May 17, 1989
 Vol. 29 Pg. 24E
 VIRGINIA M. FLECK
 RECORDER, COMMONWEALTH OF VA
 City of Richmond, Virginia

REVISIONS
 1. 11/16/89
 2. 11/16/89
 3. 11/16/89
 4. 11/16/89
 5. 11/16/89
 6. 11/16/89
 7. 11/16/89
 8. 11/16/89
 9. 11/16/89
 10. 11/16/89
 11. 11/16/89
 12. 11/16/89
 13. 11/16/89
 14. 11/16/89
 15. 11/16/89
 16. 11/16/89
 17. 11/16/89
 18. 11/16/89
 19. 11/16/89
 20. 11/16/89
 21. 11/16/89
 22. 11/16/89
 23. 11/16/89
 24. 11/16/89
 25. 11/16/89
 26. 11/16/89
 27. 11/16/89
 28. 11/16/89
 29. 11/16/89
 30. 11/16/89
 31. 11/16/89
 32. 11/16/89
 33. 11/16/89
 34. 11/16/89
 35. 11/16/89
 36. 11/16/89
 37. 11/16/89
 38. 11/16/89
 39. 11/16/89
 40. 11/16/89
 41. 11/16/89
 42. 11/16/89
 43. 11/16/89
 44. 11/16/89
 45. 11/16/89
 46. 11/16/89
 47. 11/16/89
 48. 11/16/89
 49. 11/16/89
 50. 11/16/89
 51. 11/16/89
 52. 11/16/89
 53. 11/16/89
 54. 11/16/89
 55. 11/16/89
 56. 11/16/89
 57. 11/16/89
 58. 11/16/89
 59. 11/16/89
 60. 11/16/89
 61. 11/16/89
 62. 11/16/89
 63. 11/16/89
 64. 11/16/89
 65. 11/16/89
 66. 11/16/89
 67. 11/16/89
 68. 11/16/89
 69. 11/16/89
 70. 11/16/89
 71. 11/16/89
 72. 11/16/89
 73. 11/16/89
 74. 11/16/89
 75. 11/16/89
 76. 11/16/89
 77. 11/16/89
 78. 11/16/89
 79. 11/16/89
 80. 11/16/89
 81. 11/16/89
 82. 11/16/89
 83. 11/16/89
 84. 11/16/89
 85. 11/16/89
 86. 11/16/89
 87. 11/16/89
 88. 11/16/89
 89. 11/16/89
 90. 11/16/89
 91. 11/16/89
 92. 11/16/89
 93. 11/16/89
 94. 11/16/89
 95. 11/16/89
 96. 11/16/89
 97. 11/16/89
 98. 11/16/89
 99. 11/16/89
 100. 11/16/89



DO NOT SCALE DIMENSIONS COPY

BUILDING 'B' SECOND FLOOR PLAN

DATE	BY	APP'D

--

FORNELL
 ENGINEERS - CONTRACTORS

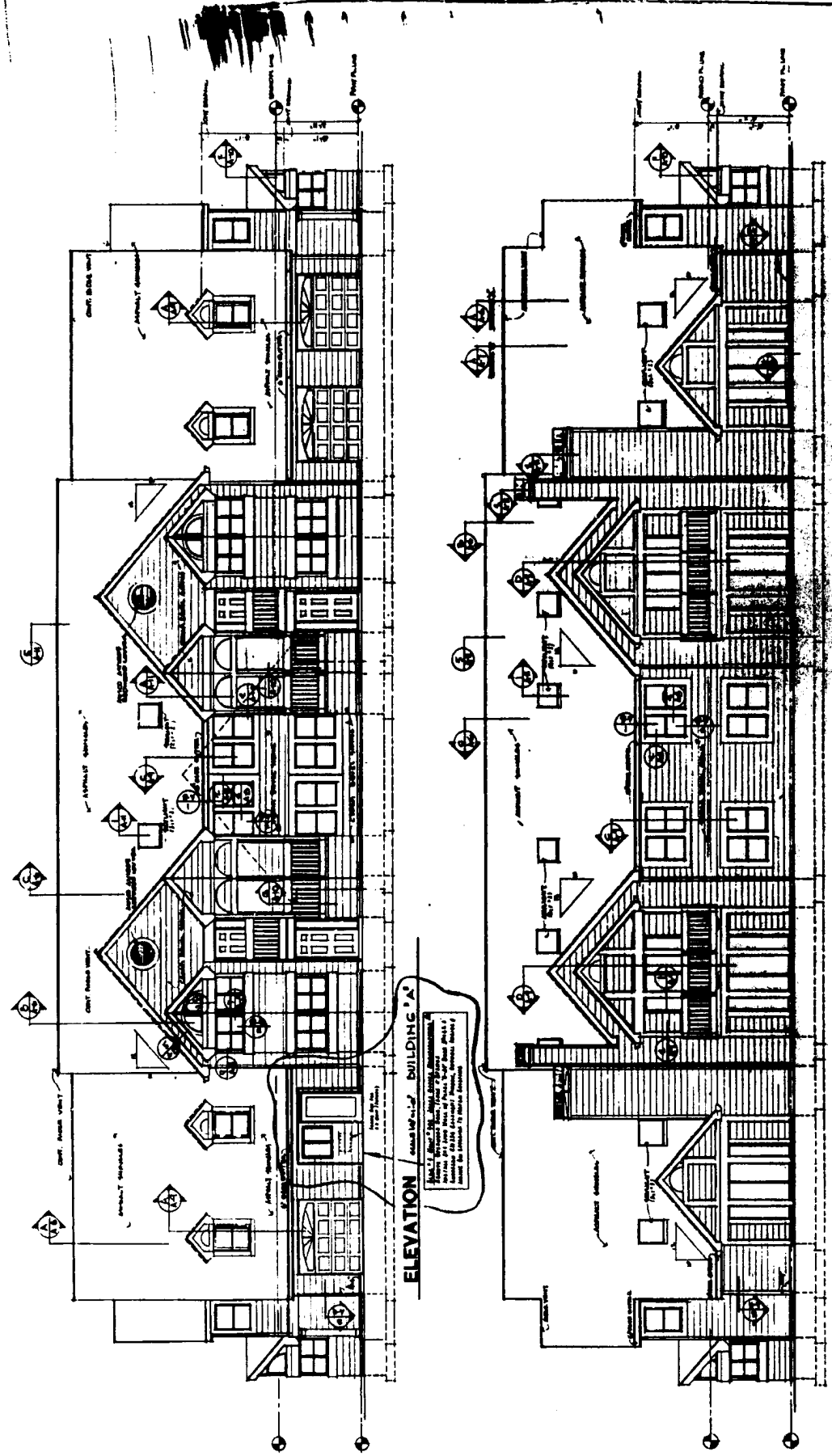
BUILDING 'B' SECOND FLOOR PLAN

BAY POINT
 CONDOMINIUMS
 MANASSAS, VA

55173
 RECEIVED: Nov. 14, 1989
 FROM: 3:19 P.M. Nov. 17, 1989
 TO: 3:19 P.M. Nov. 17, 1989
 VOL. 29 PAGE 24F PG. 24F
 VIRGINIA, M. FAX
 RECEIVED: 3:19 P.M. Nov. 17, 1989
 FROM: 3:19 P.M. Nov. 17, 1989
 TO: 3:19 P.M. Nov. 17, 1989
 VOL. 29 PAGE 24F PG. 24F
 VIRGINIA, M. FAX

BARBER'S
 19 S. WASHINGTON ST. SUITE 200
 ARLINGTON, VA 22204
 (703) 261-1111

ARCHITECT
 19 S. WASHINGTON ST. SUITE 200
 ARLINGTON, VA 22204
 (703) 261-1111



BAY POINT
 CONDOMINIUMS
 1980 BAYVIEW DR.
 ARLINGTON, VA 22204

EXTERIOR ELEVATIONS

ELEVATION BUILDING A & BUILDING B

DO NOT SCALE REDUCED COPY

DATE	NO.	BY	REVISION

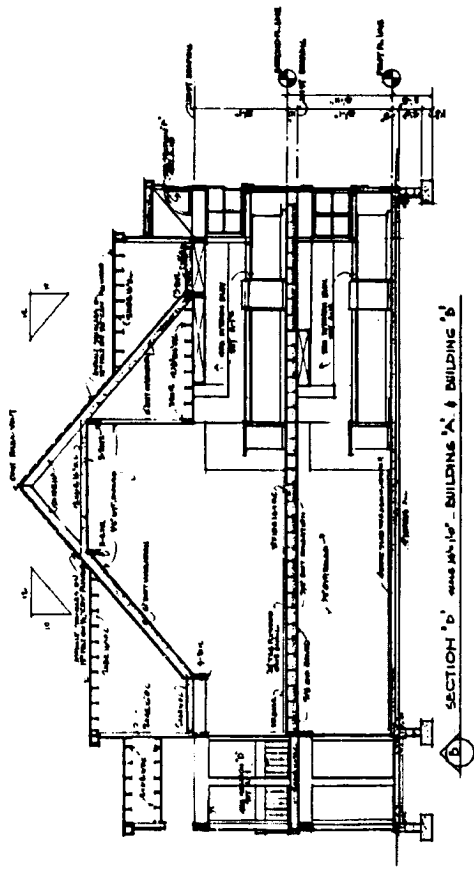
A-16

Vol. 29 P. 24 G

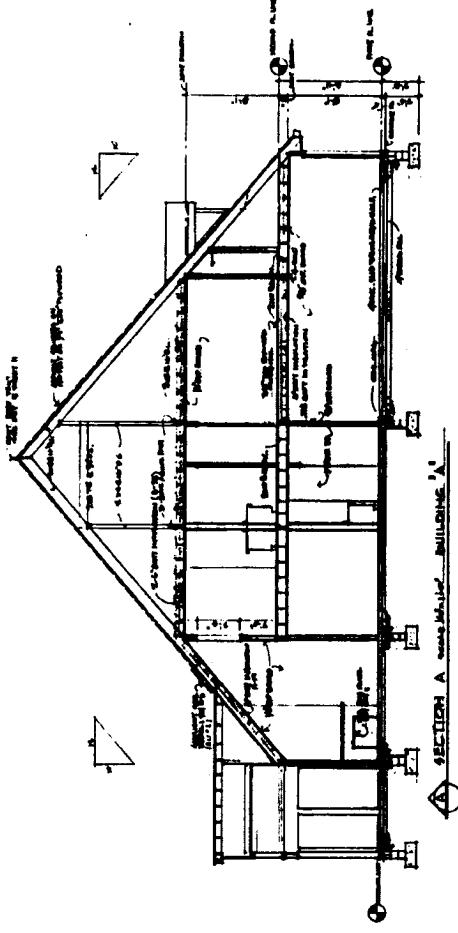
5875
RECEIVED: Nov. 16, 1939
Time: 5:14 P.M.
Accession: Nov 17, 1939
Vol. 35 P. 24-25 P. 24 G
VIRGINIA M. ARCH.
RESEARCH ARCHIVES DIVISION, COLLEGE
OF ARCHITECTURE, VIRGINIA POLYTECHNIC
INSTITUTE

RESEARCH ARCHIVES DIVISION
COLLEGE OF ARCHITECTURE
VIRGINIA POLYTECHNIC INSTITUTE
BLACKSBURG, VIRGINIA

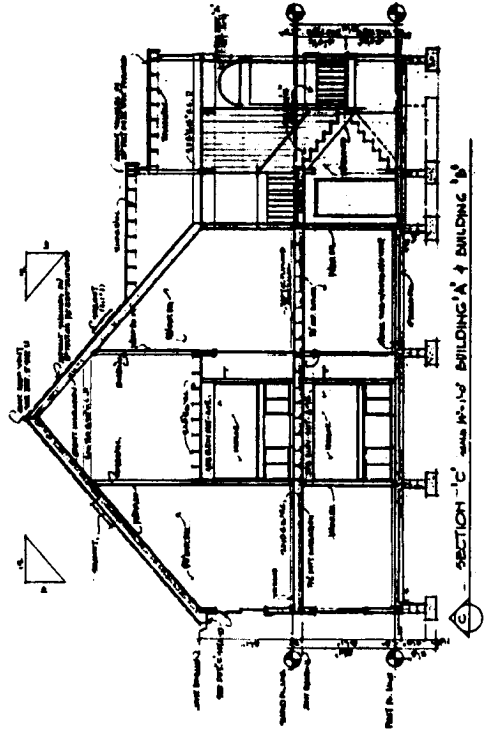
RESEARCH ARCHIVES DIVISION
COLLEGE OF ARCHITECTURE
VIRGINIA POLYTECHNIC INSTITUTE
BLACKSBURG, VIRGINIA



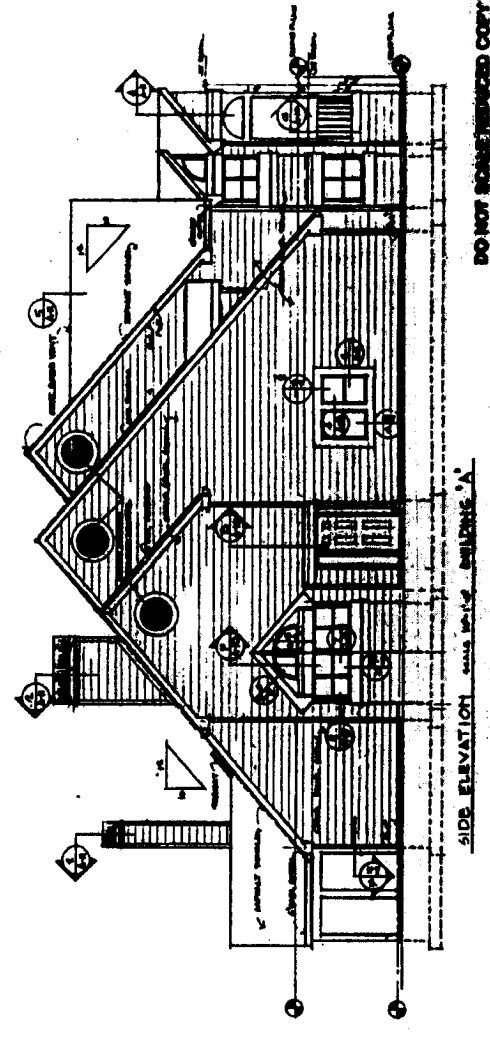
SECTION 'b' - BUILDING 'A' - BUILDING 'B'



SECTION 'A' - BUILDING 'A'



SECTION 'c' - BUILDING 'A' - BUILDING 'B'



SIDE ELEVATION - BUILDING 'A'

DO NOT REPRODUCED COPY

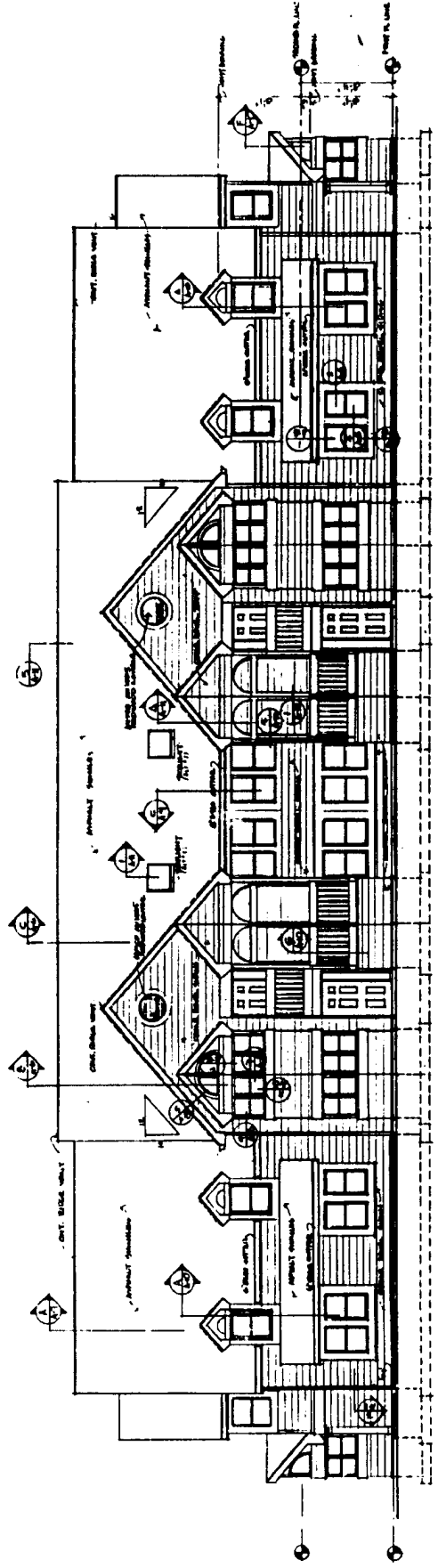
BAY POINT

Vol. 29 Pg. 24 H

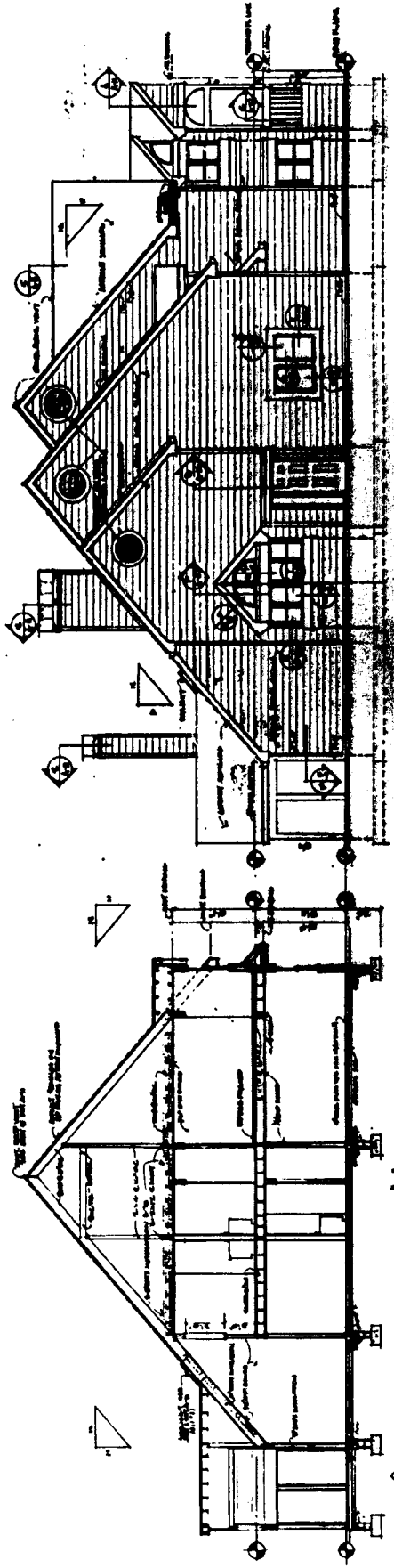
RECEIVED: Nov. 16, 1989
Name: Gary A. Barber
Proposed: Nov. 24, 1989
Vol. 29 Pg. 24 H
Vicki M. Barber
Residing at: 10000
City of: [illegible]

58173
RECEIVED: Nov. 16, 1989
Name: Gary A. Barber
Proposed: Nov. 24, 1989
Vol. 29 Pg. 24 H
Vicki M. Barber
Residing at: 10000
City of: [illegible]

DO NOT SCALE
DO NOT SCALE
DO NOT SCALE
DO NOT SCALE
DO NOT SCALE



ELEVATION BUILDING 'B'



SECTION 'A'

DO NOT SCALE

BAY POINT
CONDOMINIUMS
HAWAII, INC.

EXTERIOR ELEVATIONS & SECTIONS

DATE: [illegible]

SCALE: [illegible]

PROJECT: [illegible]

ARCHITECT: [illegible]

ENGINEER: [illegible]