

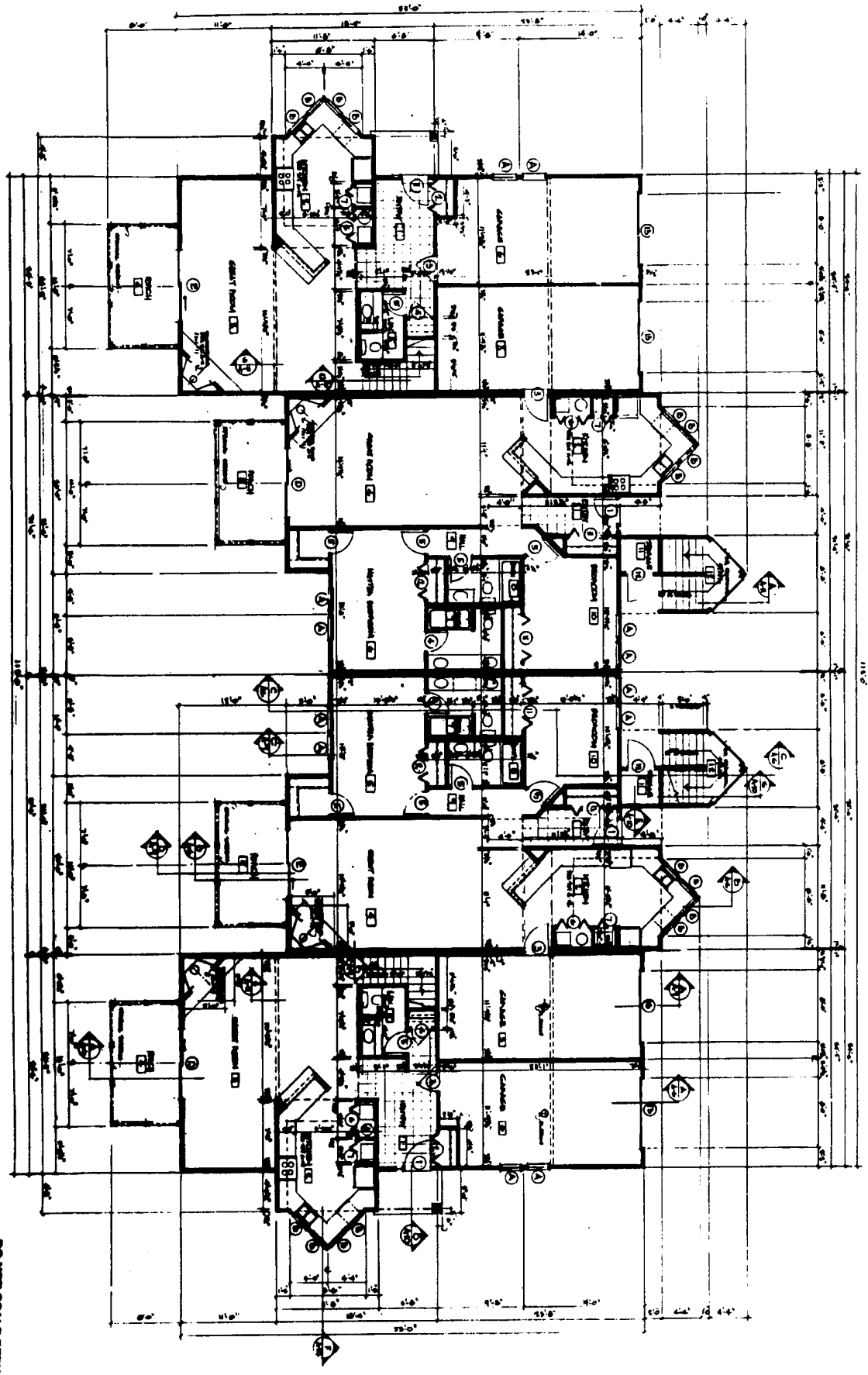


**BAY POINT  
CONDOMINIUMS**

**BUILDING 'A' FIRST FLOOR PLAN**



**BUILDING 'A' FIRST FLOOR PLAN**



**DO NOT SCALE REDUCED COPY**

Prepared by: **GARRETT S.**  
Architect  
775 S. GARDNER AVENUE, SUITE 100  
SANTA ANA, CALIFORNIA 92705  
Phone: (714) 941-1111  
Fax: (714) 941-1112

# 47154  
GARRETT S.  
ARCHITECT  
775 S. GARDNER AVENUE, SUITE 100  
SANTA ANA, CALIFORNIA 92705  
PHONE: (714) 941-1111  
FAX: (714) 941-1112

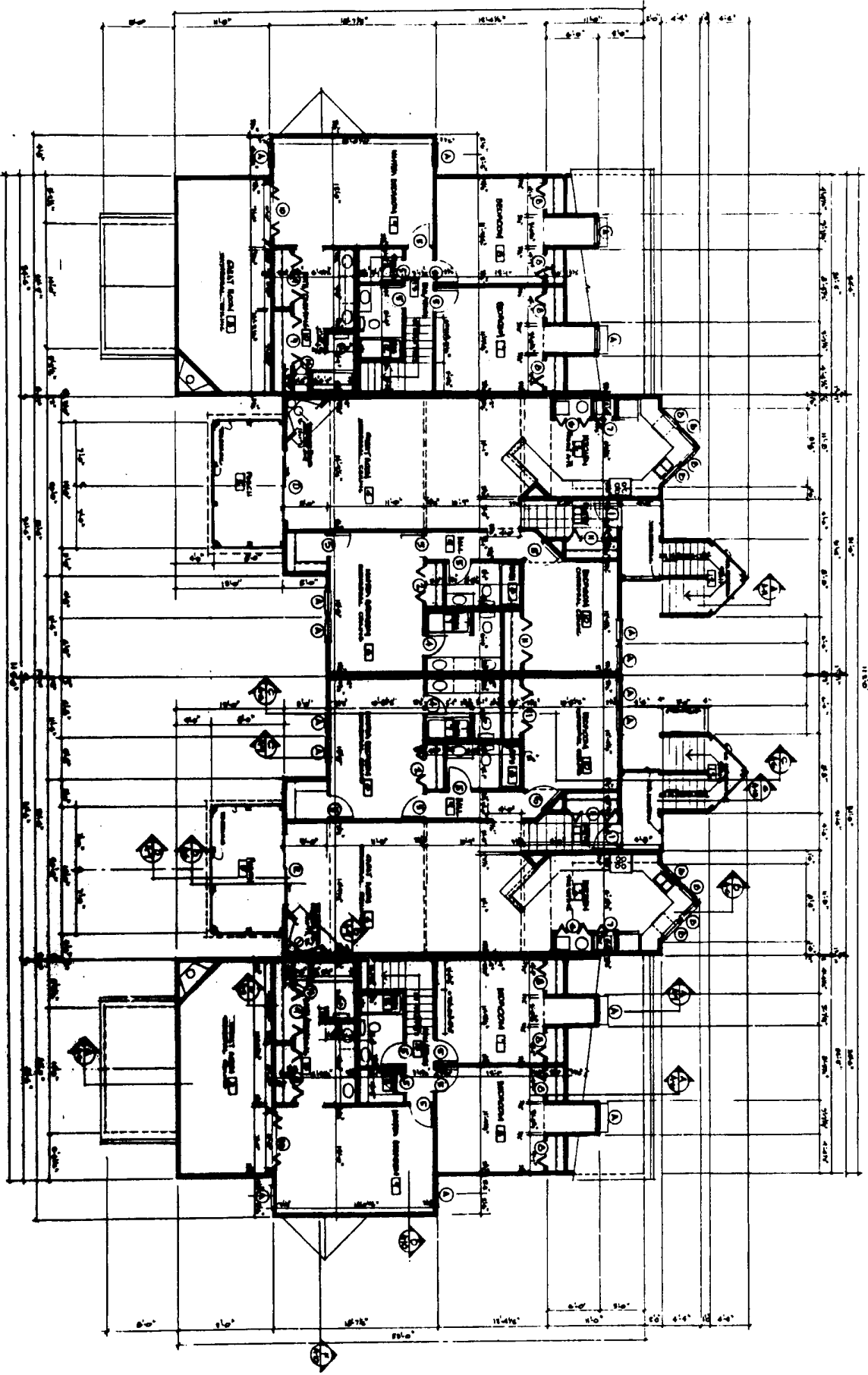


**BAY POINT**  
CONSTRUCTION

BUILDING 'A' SECOND FLOOR PLAN



BUILDING 'A' SECOND FLOOR PLAN



NO NET SCALE SERVICES COPY



A-3

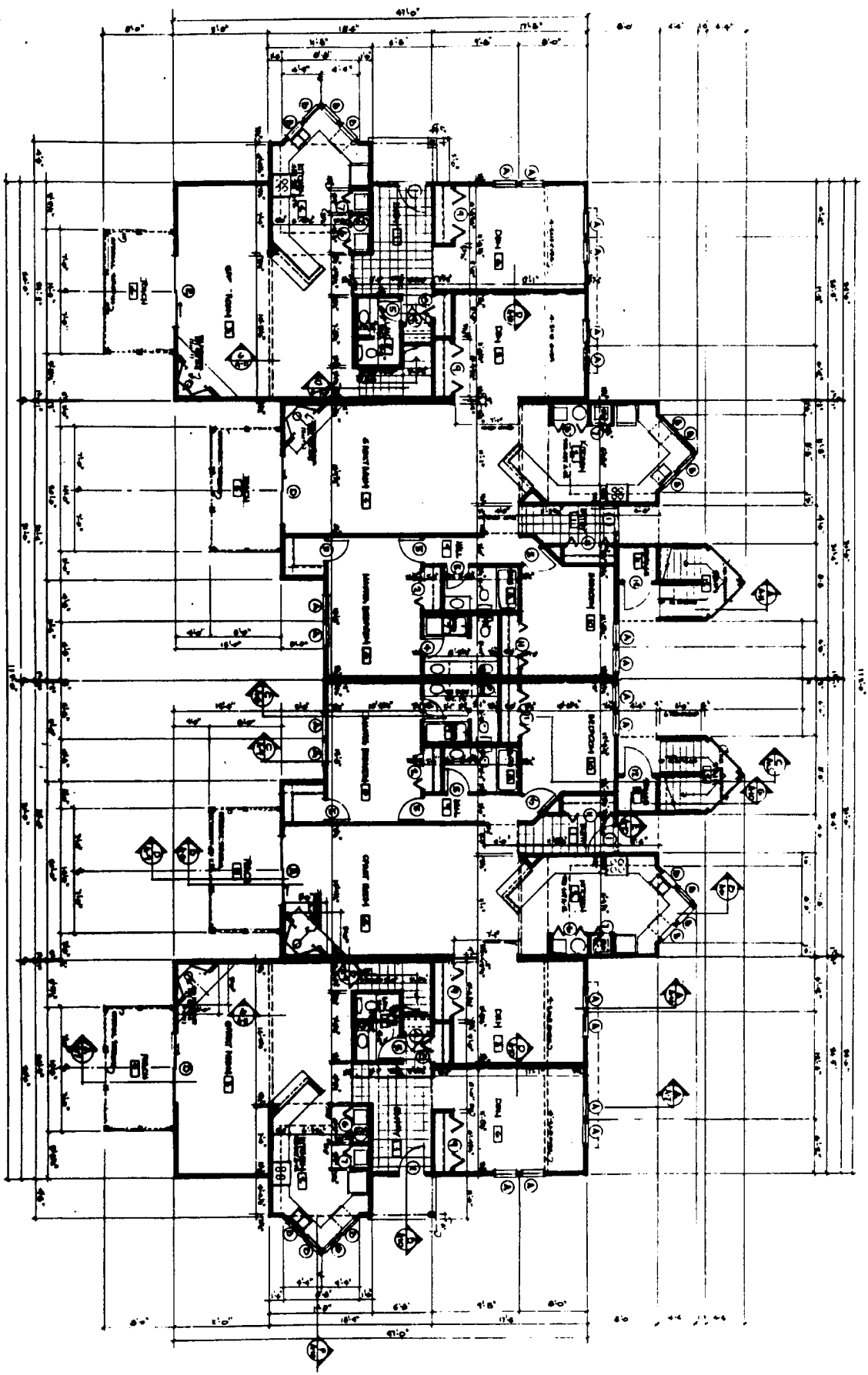
PROJECT: BAY POINT CONSTRUCTION  
ARCHITECT: GARDEN'S ARCHITECTURE  
221 S. BROADWAY, SUITE 200  
DALLAS, TEXAS 75201  
PHONE: (214) 742-1111  
WWW.GARDENARCHITECTURE.COM

#217154  
GARDEN'S ARCHITECTURE  
221 S. BROADWAY, SUITE 200  
DALLAS, TEXAS 75201  
PHONE: (214) 742-1111  
WWW.GARDENARCHITECTURE.COM



BUILDING 'B' FIRST FLOOR PLAN

DO NOT SCALE REDUCED COPY

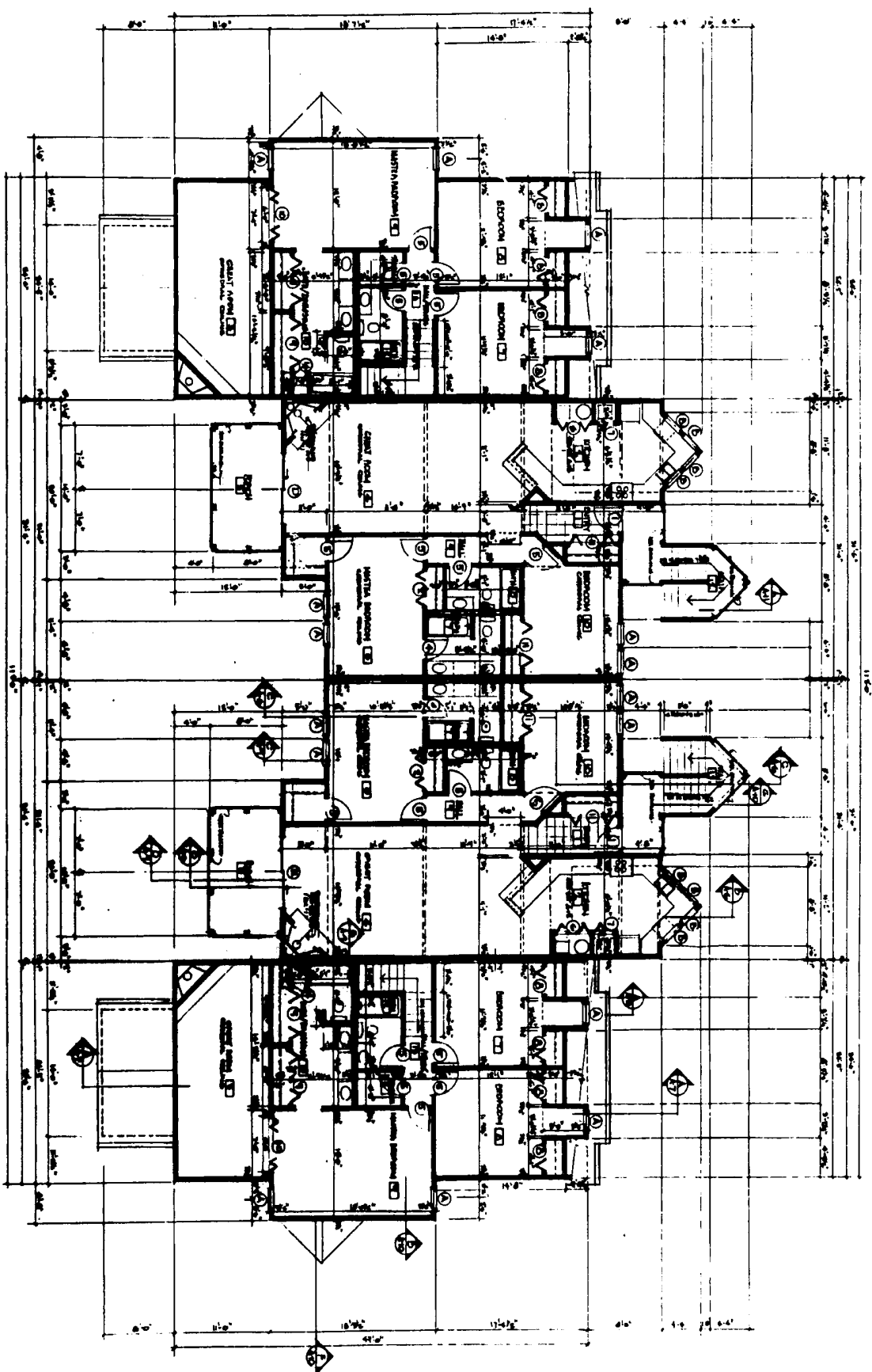


DATE: 11/11/03  
 DRAWN BY: J. GARDNER  
 CHECKED BY: J. GARDNER  
 PROJECT: BAY POINT CONDOMINIUMS  
 SHEET: B-101

DATE: 11/11/03  
 DRAWN BY: J. GARDNER  
 CHECKED BY: J. GARDNER  
 PROJECT: BAY POINT CONDOMINIUMS  
 SHEET: B-101

BUILDING "B" SECOND FLOOR PLAN

DO NOT SCALE REDUCED COPY

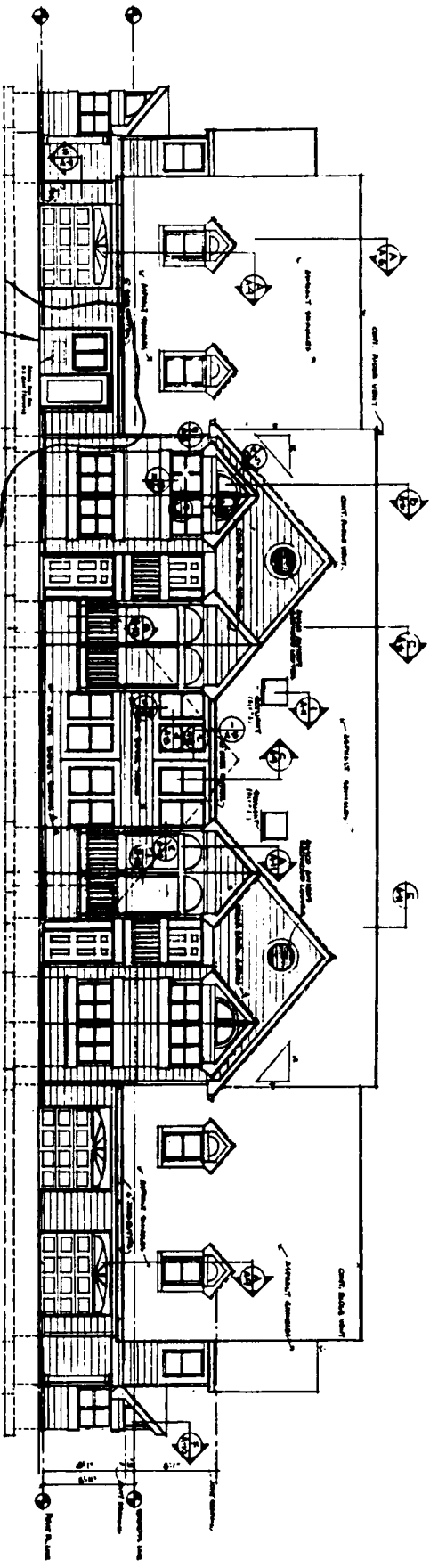


DATE: 5-28-88  
 DRAWN BY: [Signature]  
 CHECKED BY: [Signature]  
 APPROVED BY: [Signature]

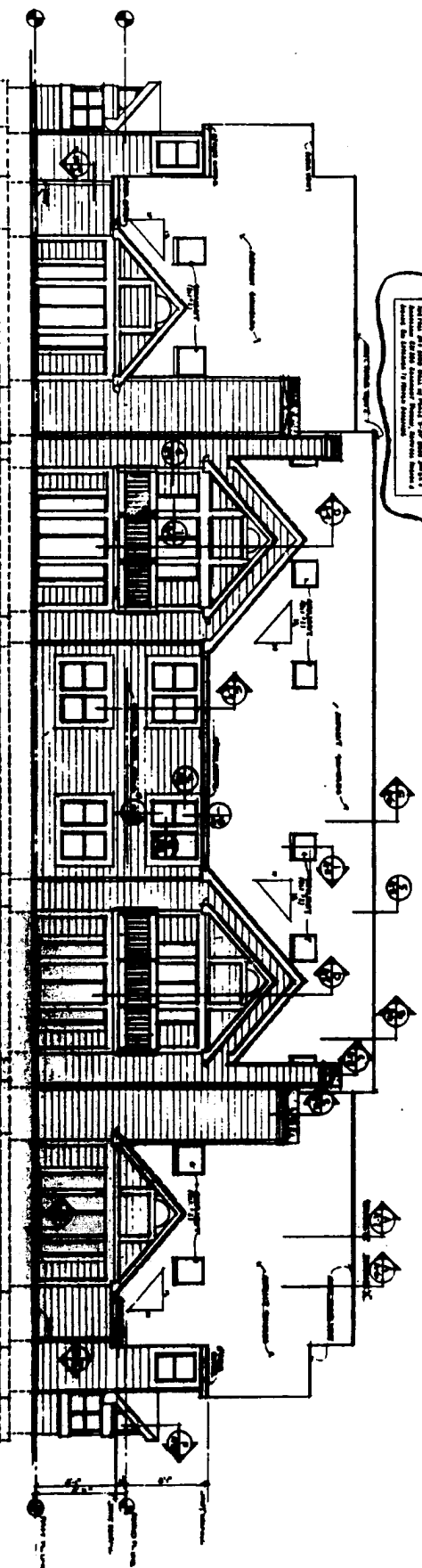
4/11/88  
 [Signature]  
 [Signature]  
 [Signature]

4-27-1918  
GARDEN'S  
1000 BAYVIEW AVENUE  
BAYVIEW, MICHIGAN

4-27-1918  
GARDEN'S  
1000 BAYVIEW AVENUE  
BAYVIEW, MICHIGAN



NOTE: THE ARCHITECT HAS ASSUMED THE RESPONSIBILITY OF THE DESIGN OF THE BUILDING AND THE MATERIALS SPECIFIED HEREIN ARE SUBJECT TO THE APPROVAL OF THE LOCAL BUILDING OFFICIALS.



ELEVATION SIDE VIEW BUILDING 'A' & BUILDING 'B'

DO NOT SCALE DRAWING COPY



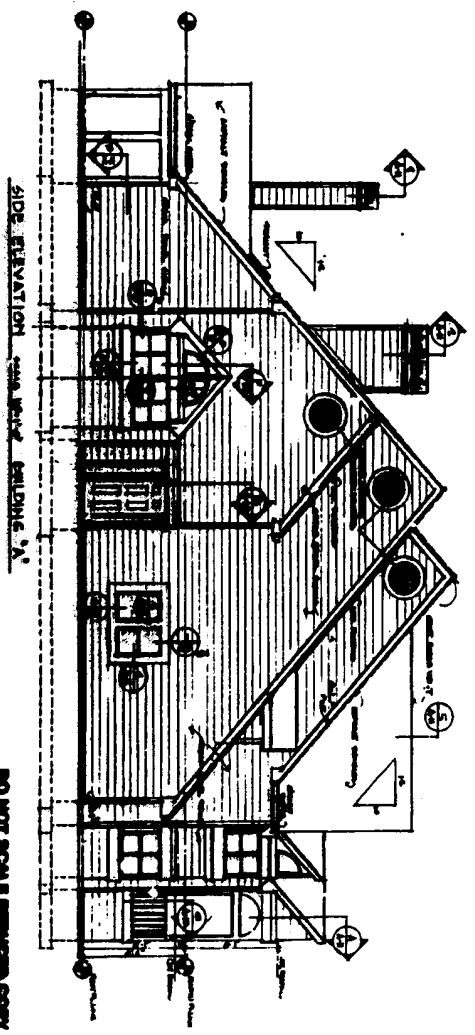
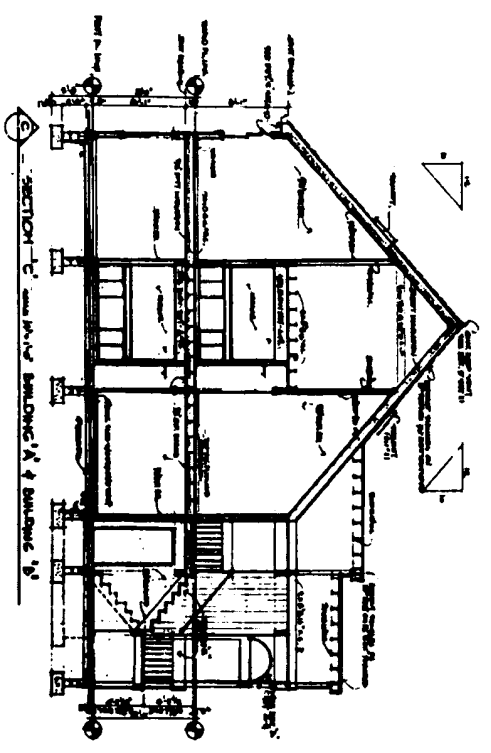
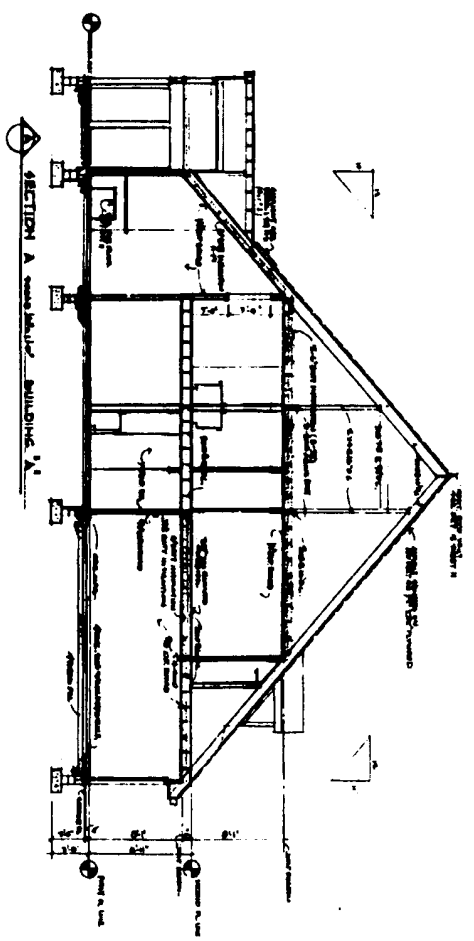
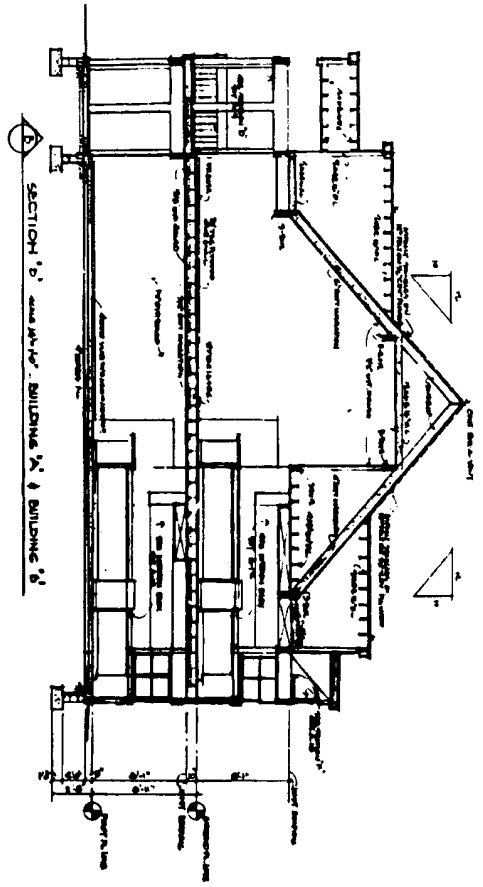
BAY POINT CONSTRUCTION

EXTERIOR ELEVATIONS



REVISIONS  
NO. 1  
DATE  
BY  
REASON

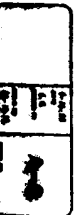
4/11/64  
C. J. B. B.  
ARCHITECT  
1015 W. 12th St.  
SEASIDE, CALIF. 92138



DO NOT SCALE DIMENSIONS COPY

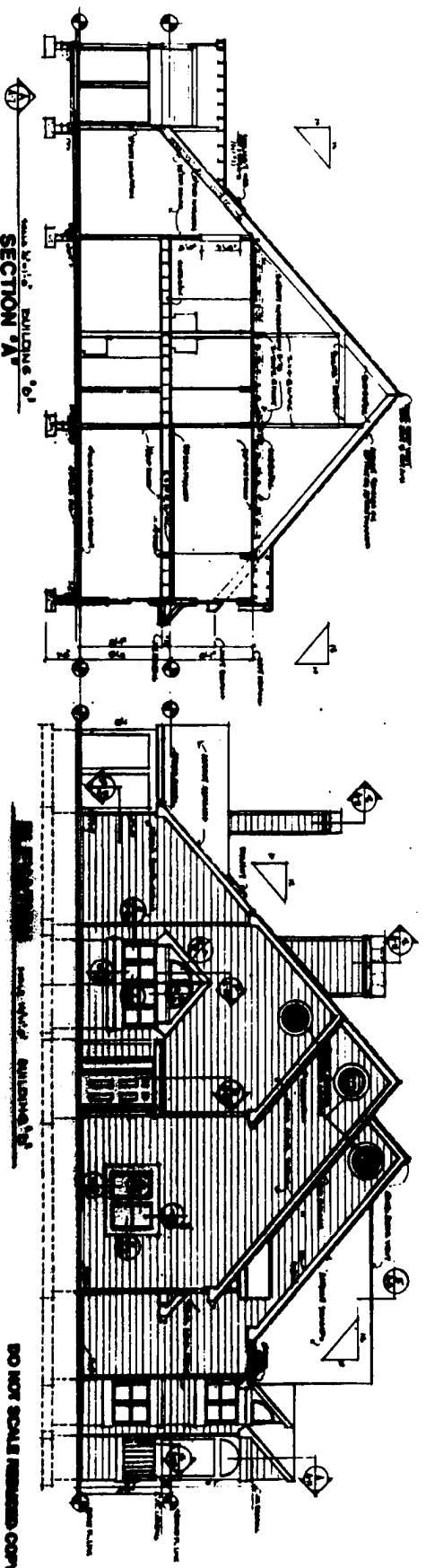
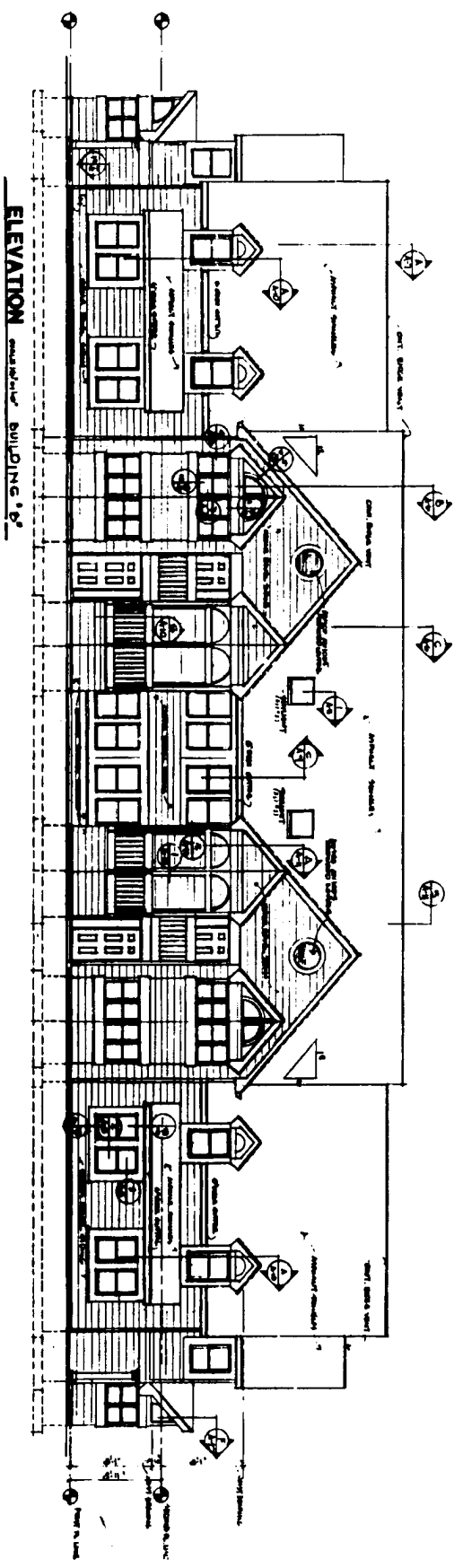


EXTENSION ELEVATIONS & SECTIONS



DRAWING NO. 100-1000  
 SHEET NO. 1-1  
 PROJECT NO. 100-1000  
 DATE 10-1-88  
 DRAWN BY ...  
 CHECKED BY ...  
 APPROVED BY ...  
 TITLE ...

APPROVED  
 DATE 10-1-88  
 BY ...  
 PROJECT NO. 100-1000  
 SHEET NO. 1-1  
 TITLE ...



  
**BAY POINT CONDOMINIUMS**  
 EXTERIOR ELEVATIONS & SECTIONS

  
 - ARCHITECTS -

[Empty rectangular box]

[Empty rectangular box]

DO NOT SCALE DIMENSIONS COPY