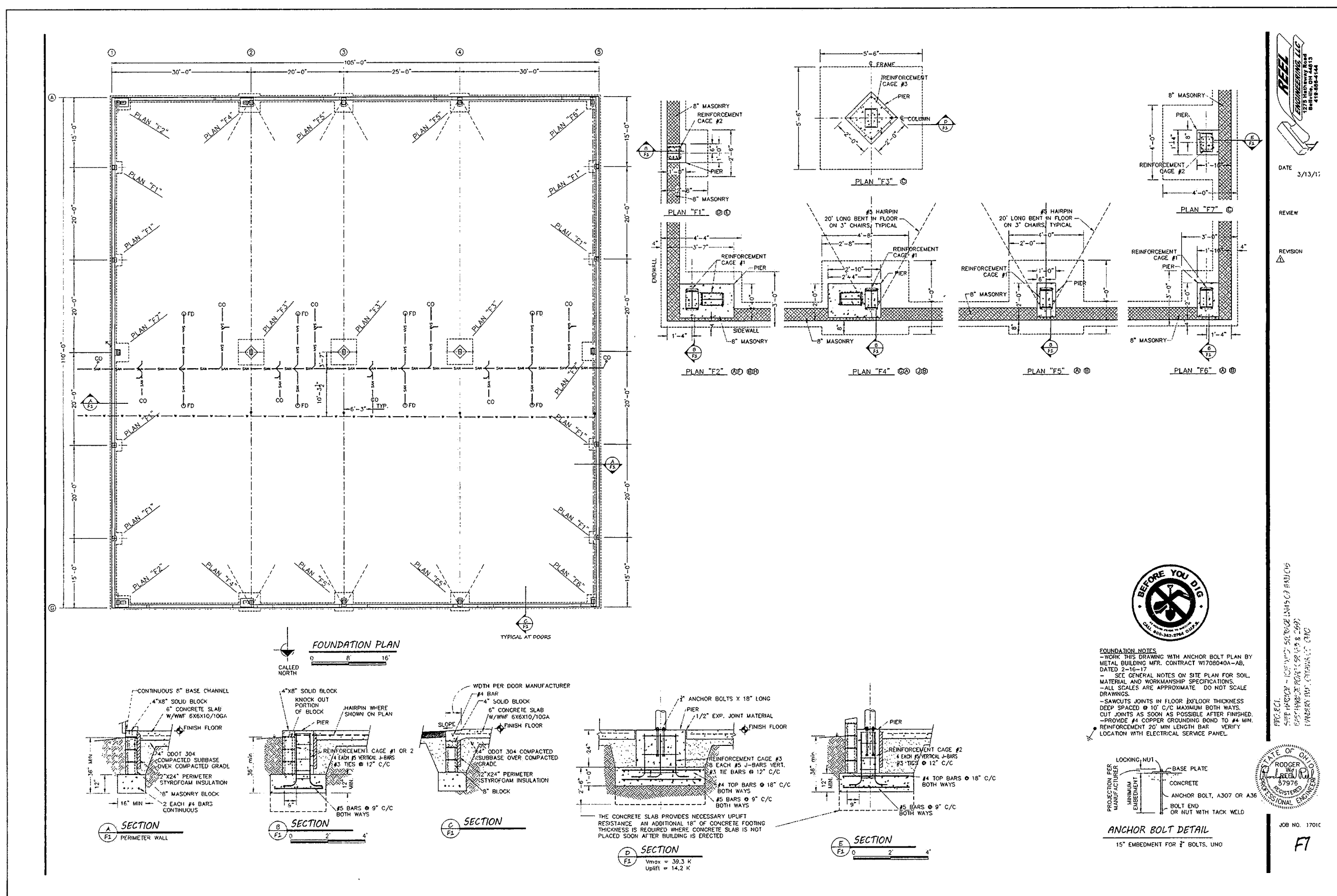
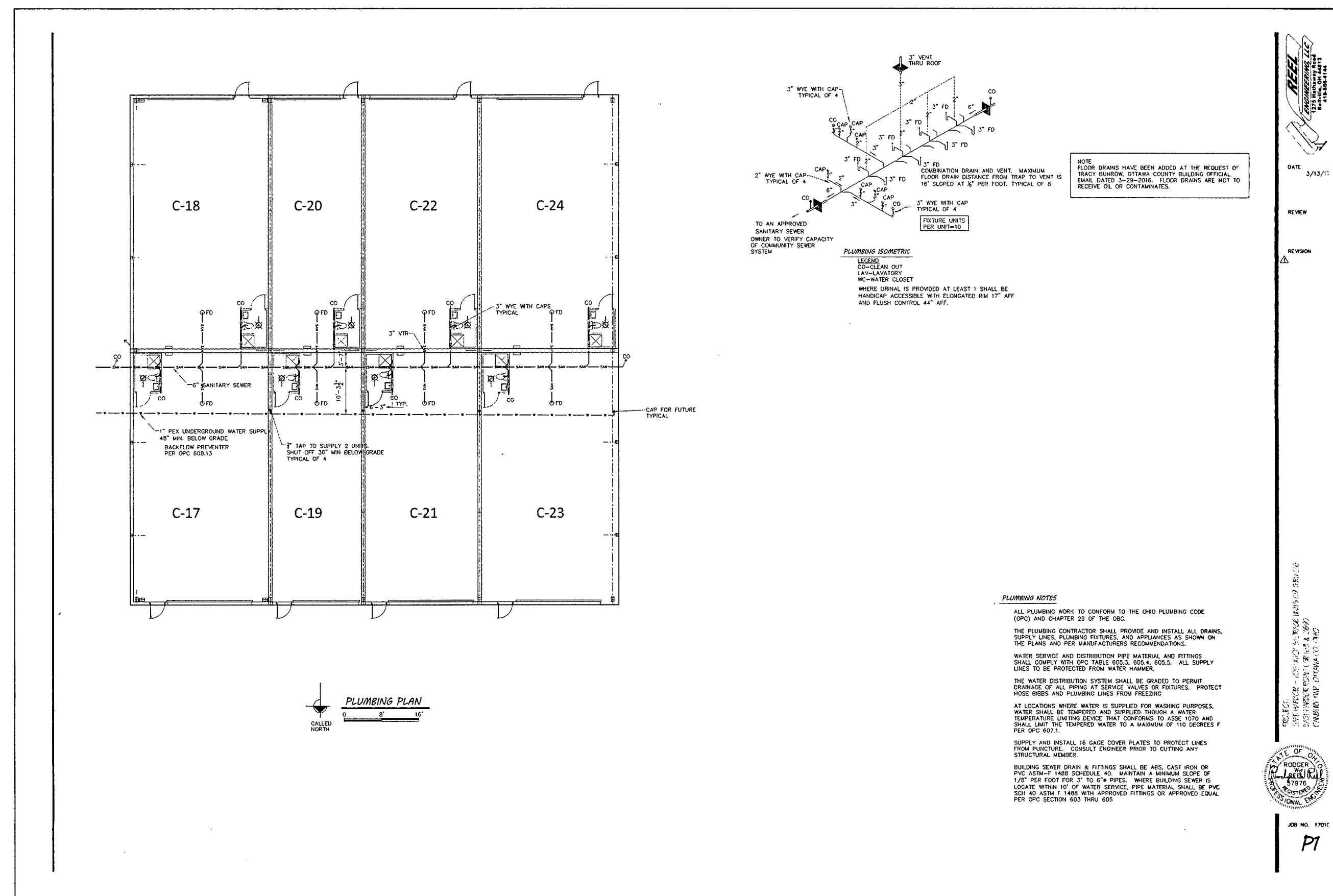


DATE: 3/13/17
 REVIEW:
 REVISION: 1
 2



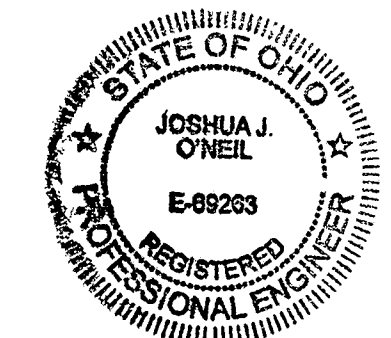
DATE: 3/13/17
 REVIEW:
 REVISION: 1
 F1



DATE: 3/13/17
 REVIEW:
 REVISION: 1
 P1

PLOTTED: Jun 19, 2018 - 8:25am
 DRAWING: M:\15080 (Safe Harbor Building Layout)\SURVEY\DWG 22-24 Safe Harbor Condominiums SEVENTH Amendment.dwg: PAGE 3

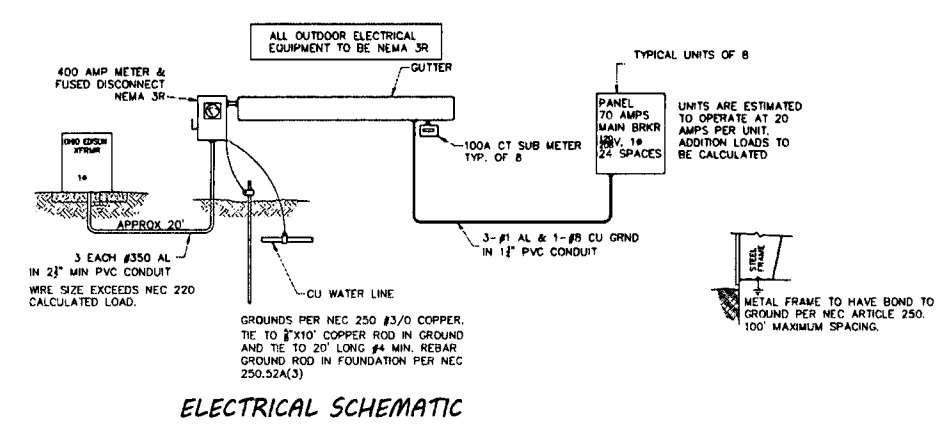
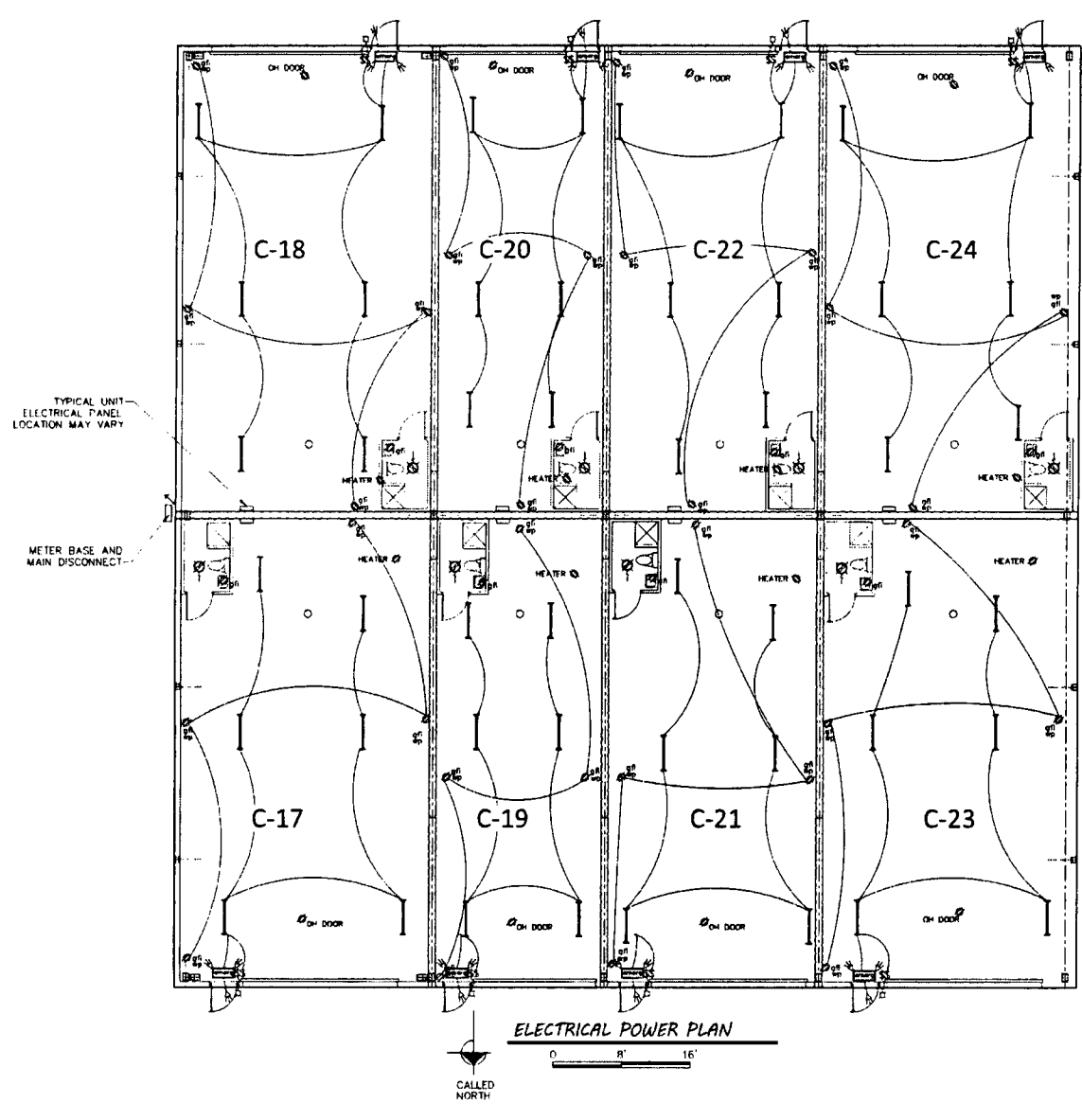
SAFE HARBOR STORAGE CONDOMINIUM SEVENTH AMENDMENT
 LOCATED IN PART OF LOT 03, SECTION 04, DANBURY TOWNSHIP, OTTAWA COUNTY, OHIO.



ENGINEER'S CERTIFICATION:
 I HEREBY DECLARE THAT THE DRAWING ACCURATELY SHOWS EACH BUILDING AS BUILT TO THE BEST OF MY KNOWLEDGE AND BELIEF.

Joshua J. O'Neil
 JOSHUA J. O'NEIL, P.E.
 OHIO PROFESSIONAL ENGINEER NO. 69263

DATE: 6-19-2018



ELECTRICAL NOTES

1. ALL ELECTRICAL WORK WILL COMPLY WITH THE REQUIREMENTS OF CHAPTER 17 OF THE NATIONAL ELECTRICAL CODE (NEC) AND THE REQUIREMENTS OF THE LOCAL AUTHORITY HAVING JURISDICTION.
2. ALL WIRING SHALL BE TYPE AND SIZE AS SPECIFIED ON THIS DRAWING. ALL WIRING SHALL BE INSTALLED IN ACCORDANCE WITH THE REQUIREMENTS OF THE NATIONAL ELECTRICAL CODE (NEC) AND THE LOCAL AUTHORITY HAVING JURISDICTION.
3. ALL WIRING SHALL BE IN PVC CONDUIT UNLESS OTHERWISE SPECIFIED.
4. ALL WIRING SHALL BE INSTALLED IN ACCORDANCE WITH THE REQUIREMENTS OF THE NATIONAL ELECTRICAL CODE (NEC) AND THE LOCAL AUTHORITY HAVING JURISDICTION.
5. THE CLEARANCES REQUIRED FOR NEC SECTION 110-26 SHALL BE MAINTAINED ABOUT THE ELECTRICAL EQUIPMENT.
6. BRANCH CIRCUIT CONDUCTORS SHALL HAVE AN AMPLITUDE OF NOT LESS THAN THE MAXIMUM LOAD TO BE CARRIED. IN ADDITION, CONDUCTORS OF ALL BRANCH CIRCUITS SHALL BE PROTECTED BY OVERCURRENT DEVICES AS SPECIFIED ON THIS DRAWING.
7. BRANCH CIRCUIT CONDUCTORS AND EQUIPMENT SHALL BE PROTECTED BY OVERCURRENT DEVICES AS SPECIFIED ON THIS DRAWING.
8. LOCATE DISCONNECTS WITHIN 1' OF EQUIPMENT.

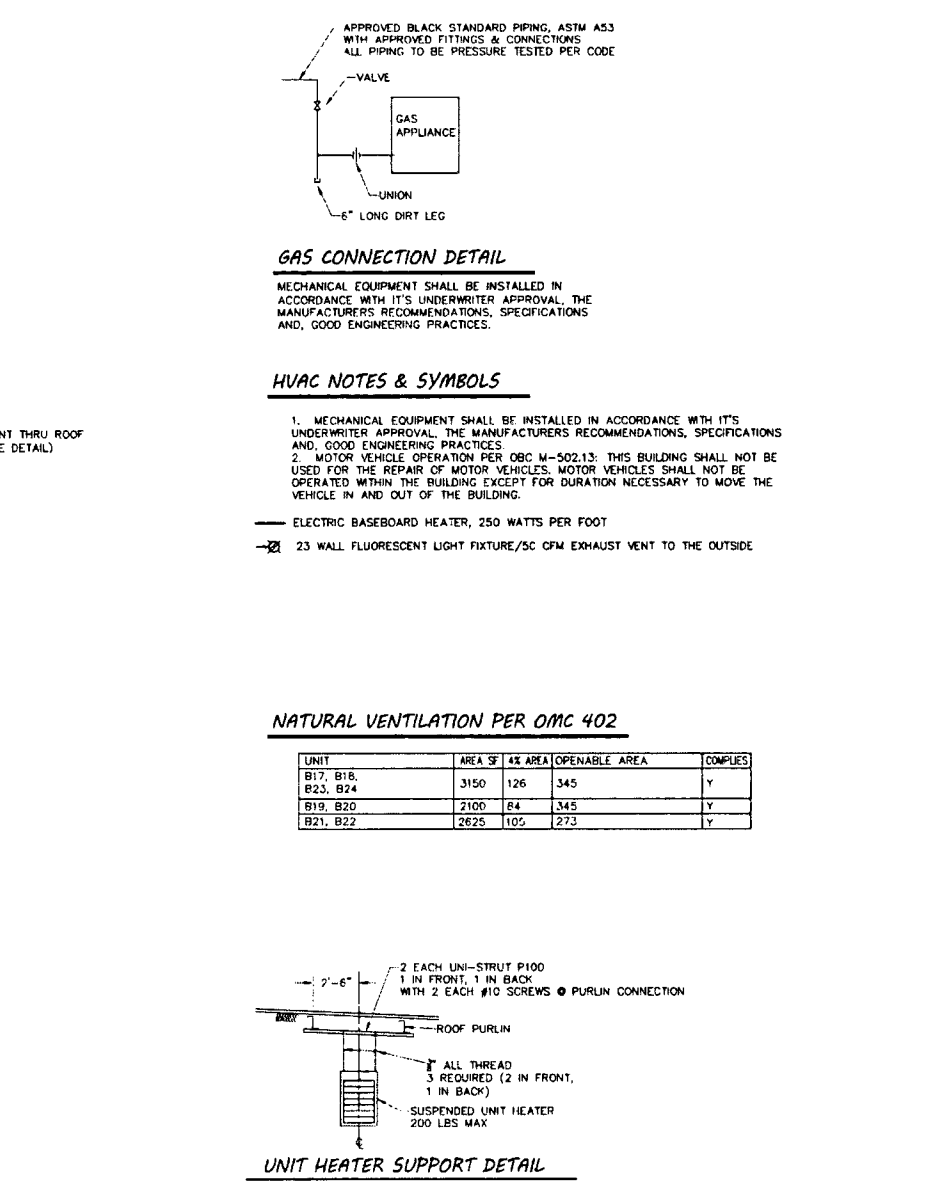
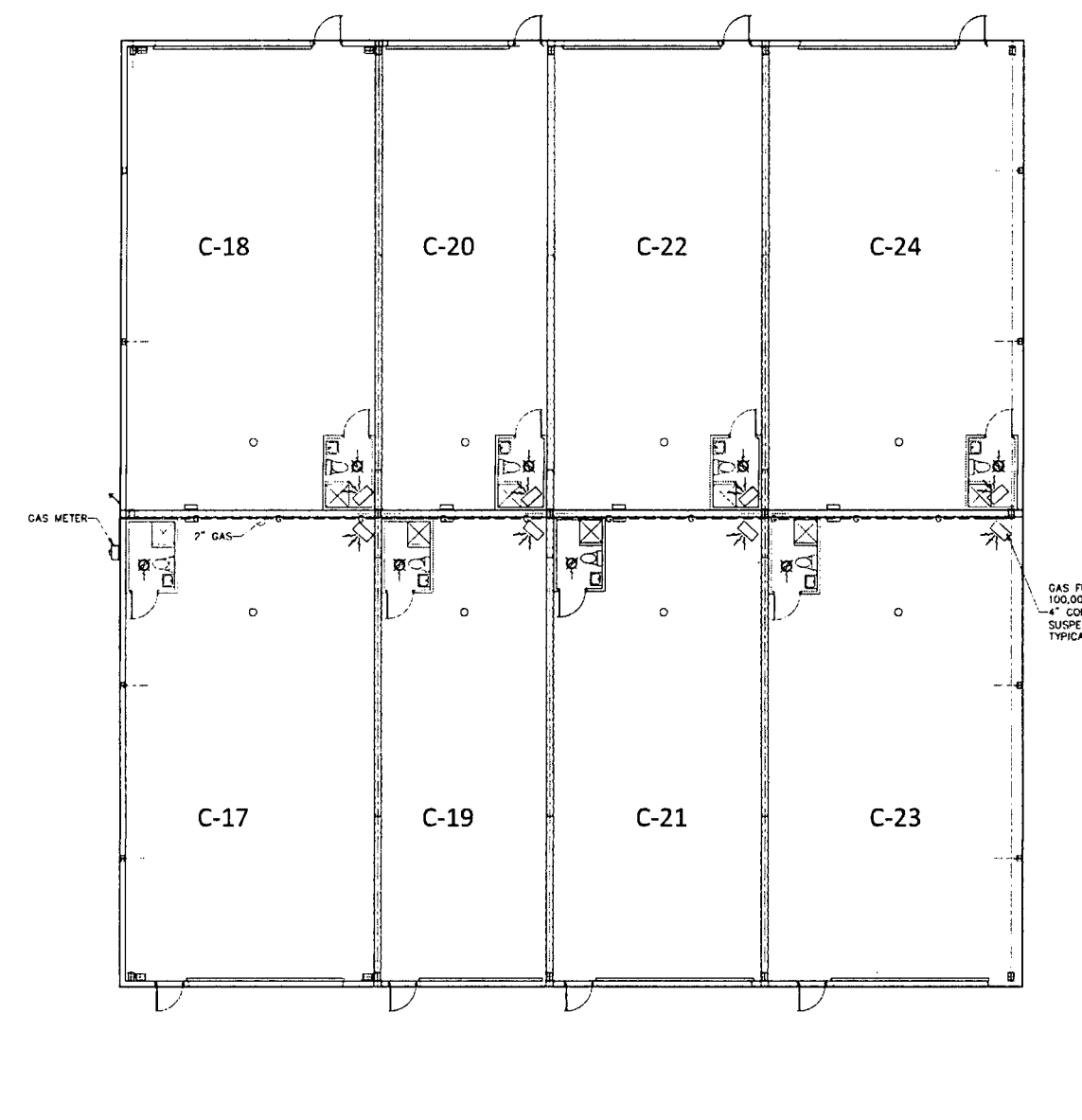
ELECTRICAL SYMBOLS

- 1 SINGLE-SWITCH SYMBOL INSTANT AT 40' HT
- 2 GROUND-FULL CURRENT INTERRUPT DUPLEX RECEPTACLE
- 3 GROUND-FULL CURRENT INTERRUPT DUPLEX RECEPTACLE WITH WATERPROOF COVER
- 4 INDUSTRIAL FLUORESCENT LIGHT FIXTURE, 2 BALLPS @ 34W 40

ELECTRICAL SCHEMATIC

VOLTAGE DROP CALCULATION:
 1. CONDUCTOR AND LOAD DATA:
 2. CONDUCTOR TYPE: 12 AWG THHN
 3. CONDUCTOR SIZE: 12 AWG THHN
 4. CONDUCTOR LENGTH: 100 FT
 5. CONDUCTOR RESISTANCE: 0.16 OHMS PER 100 FT
 6. CONDUCTOR REACTANCE: 0.001 OHMS PER 100 FT
 7. LOAD TYPE: 2000 WATT PER UNIT
 8. LOAD CURRENT: 9.1 A
 9. LOAD POWER FACTOR: 0.9
 10. VOLTAGE DROP: 1.6 V
 11. PERCENT VOLTAGE DROP: 0.4%

DATE: 3/13/17
 REVIEW:
 REVISION:
 PROJECT: SAFE HARBOR PLAZA BUILDING LAYOUT (SURVEY) (DWG) 22x34
 SHEET: E1



GAS CONNECTION DETAIL

MECHANICAL EQUIPMENT SHALL BE INSTALLED IN ACCORDANCE WITH ITS UNDERWRITER APPROVAL, THE MANUFACTURER'S INSTALLATION INSTRUCTIONS, SPECIFICATIONS AND GOOD ENGINEERING PRACTICES.

HVAC NOTES & SYMBOLS

1. MECHANICAL EQUIPMENT SHALL BE INSTALLED IN ACCORDANCE WITH ITS UNDERWRITER APPROVAL, THE MANUFACTURER'S INSTALLATION INSTRUCTIONS, SPECIFICATIONS AND GOOD ENGINEERING PRACTICES.
2. IN-DOOR VEHICLE OPERATION PER OMC M-502.13 THIS BUILDING SHALL NOT BE OPERATED WITHIN THE BUILDING EXCEPT FOR DURATION NECESSARY TO MOVE THE VEHICLE IN AND OUT OF THE BUILDING.

NATURAL VENTILATION PER OMC 402

UNIT	AREA	MIN. FREE AREA	COMPL.
UNIT 18	1200	120	1
UNIT 19	1200	120	1
UNIT 20	1200	120	1
UNIT 21	1200	120	1
UNIT 22	1200	120	1
UNIT 23	1200	120	1
UNIT 24	1200	120	1

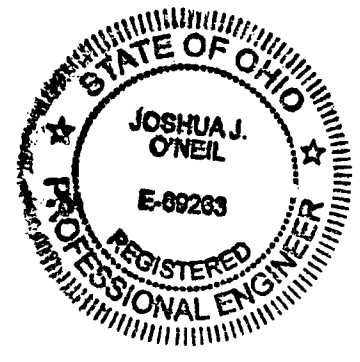
UNIT HEATER SUPPORT DETAIL

2 EACH 1/2" DIA. STEEL ROD
 2 EACH 1/2" DIA. STEEL ROD
 WITH 2 EACH #10 SCREWS @ PURLIN CONNECTION

DATE: 3/13/17
 REVIEW:
 REVISION:
 PROJECT: SAFE HARBOR PLAZA BUILDING LAYOUT (SURVEY) (DWG) 22x34
 SHEET: H1

PLOTTED: Jun 13, 2018 - 8:25am
 DRAWING: M:\15080 (Safe Harbor Development - Safe Harbor Plaza Building Layout)\SURVEY(Dwg)22x34 Safe Harbor Condominiums SEVENTH Amendment.dwg PAGE 4

SAFE HARBOR STORAGE
 CONDOMINIUM
 SEVENTH AMENDMENT
 LOCATED IN PART OF LOT 03 SECTION 04 DANBURY
 TOWNSHIP, OTTAWA COUNTY, OHIO.

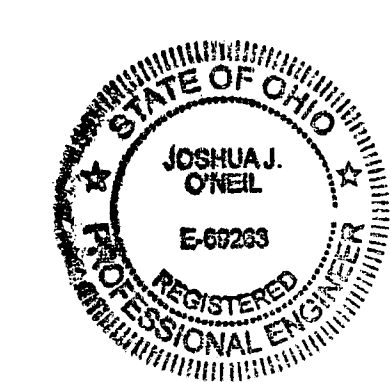
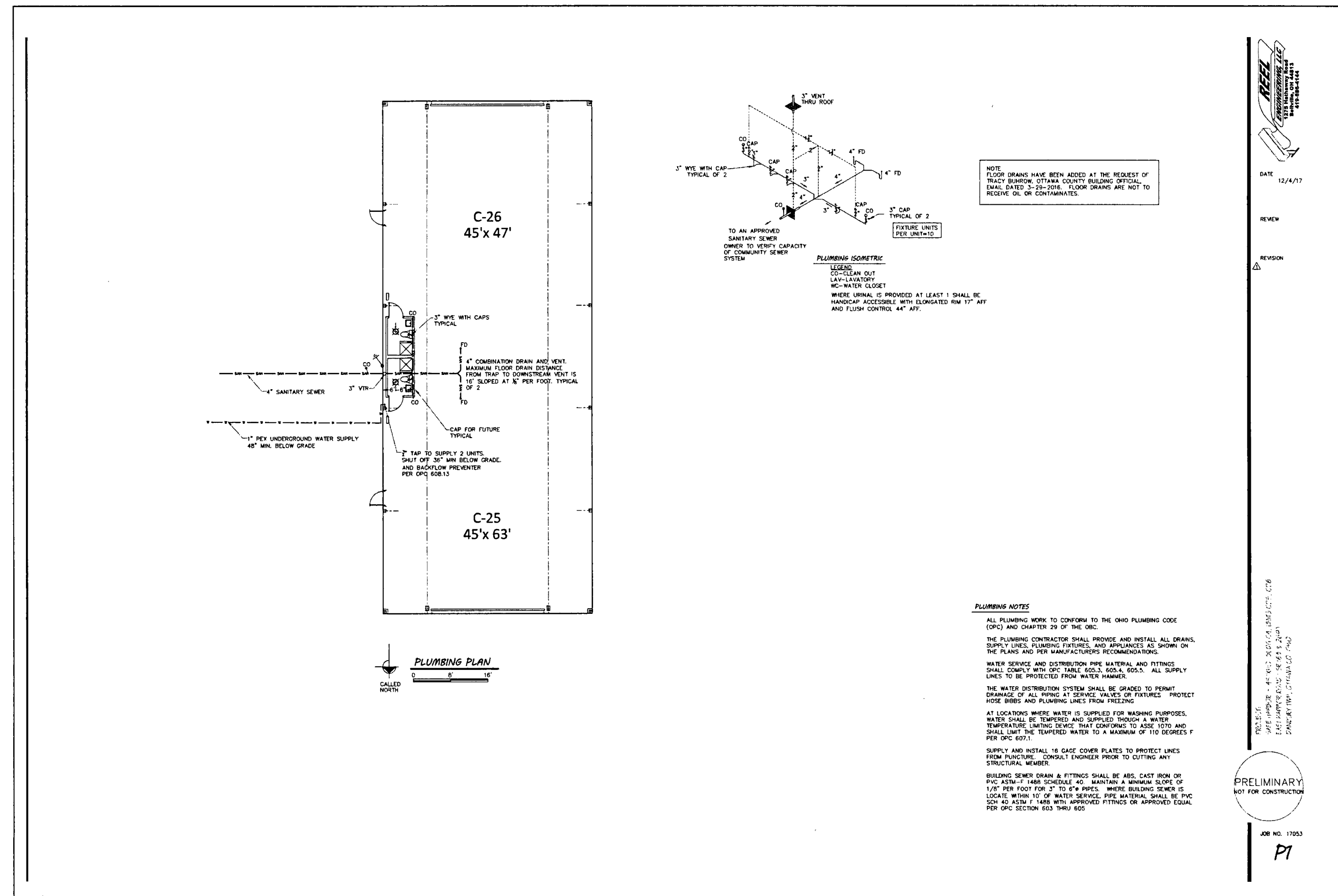
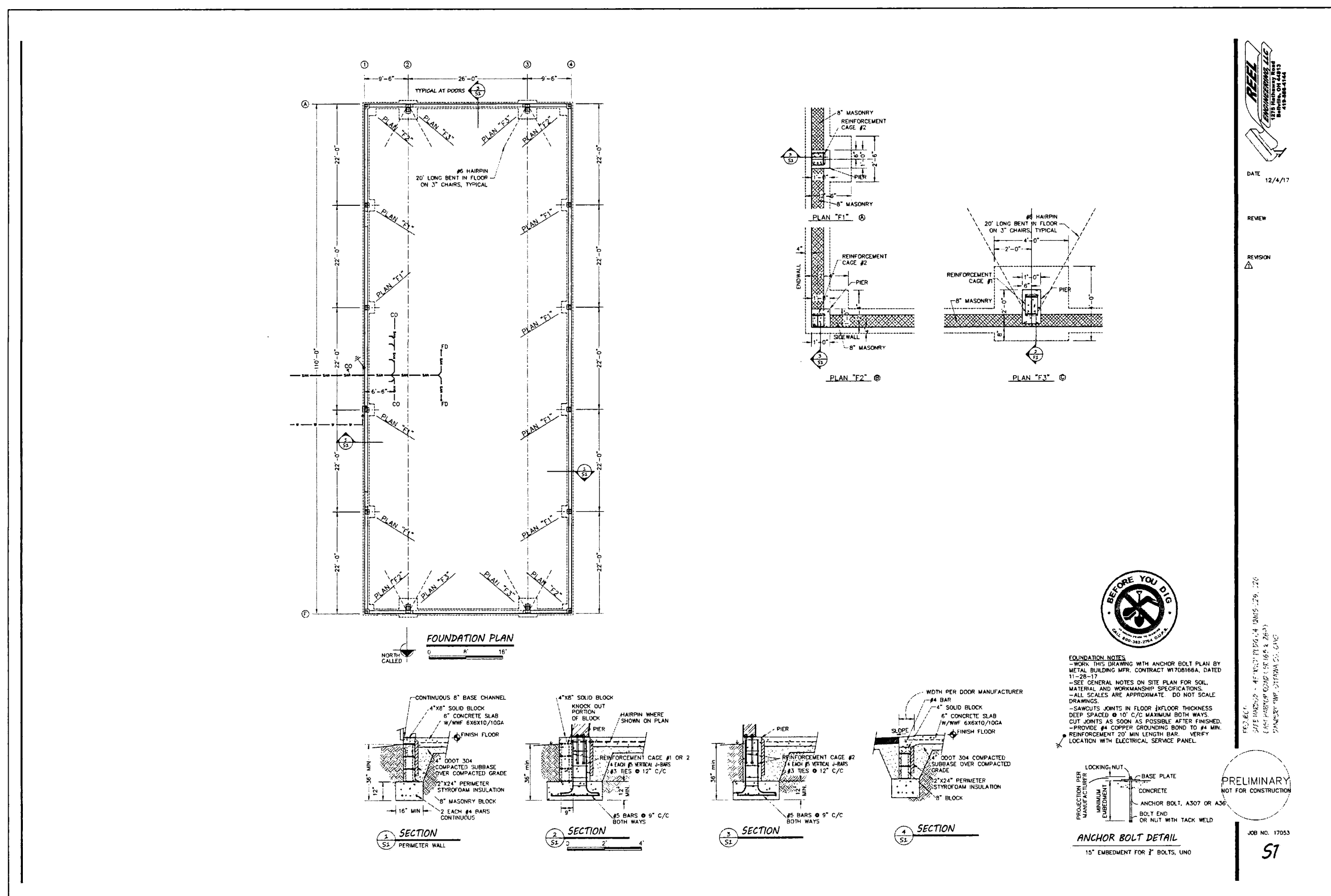
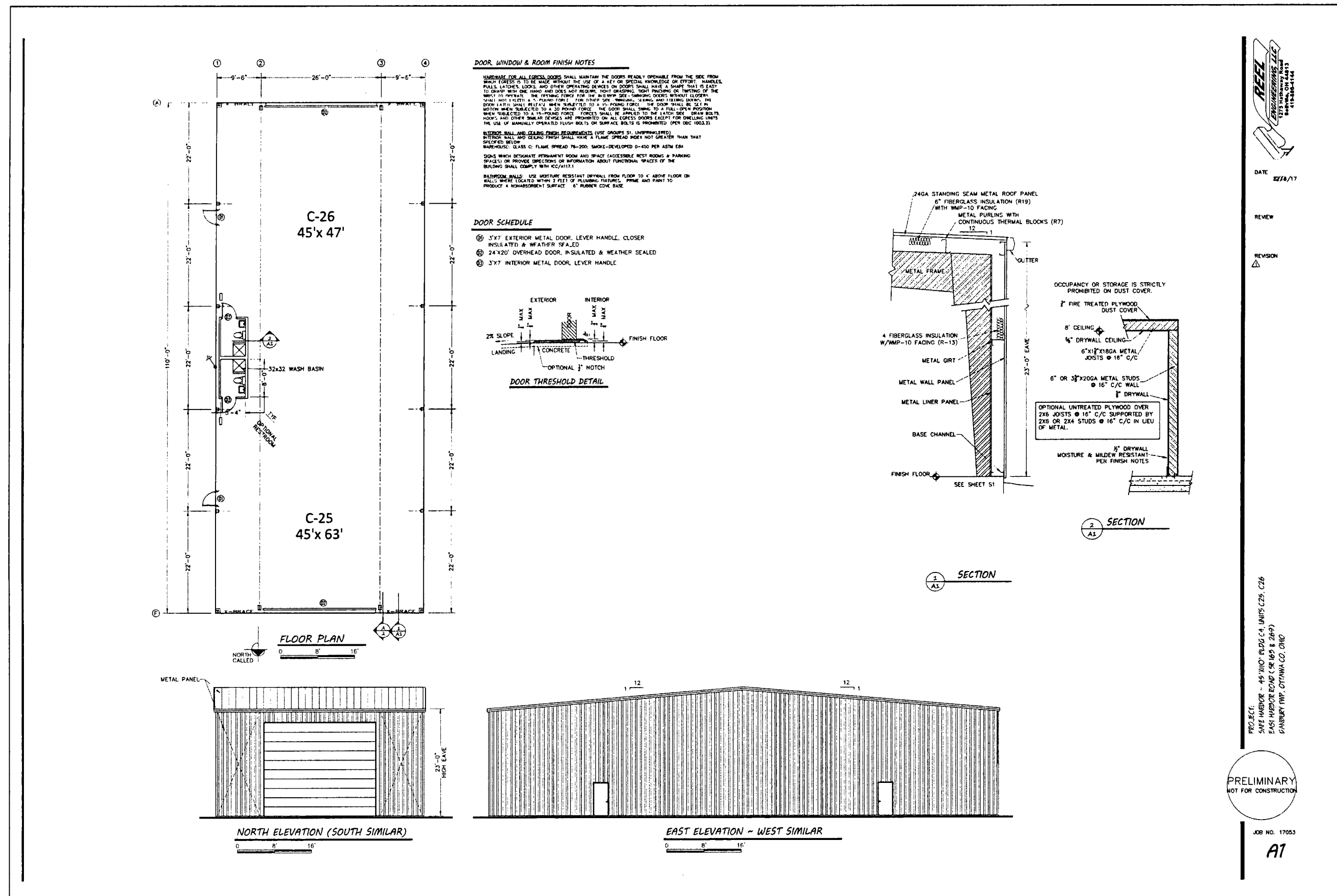


ENGINEER'S CERTIFICATION:
 I HEREBY DECLARE THAT THE DRAWING ACCURATELY SHOWS EACH BUILDING AS BUILT TO THE BEST OF MY KNOWLEDGE AND BELIEF.

Joshua J. O'Neil
 JOSHUA J. O'NEIL, P.E.
 OHIO PROFESSIONAL ENGINEER NO. 69263

DATE: 6-19-2018

PLOTTED: Jun 19, 2018 - 8:27am
 DRAWING: M:\15090 (Safe Harbor Development - Safe Harbor Plaza Building Layout)\SURVEY Dwg\22-34 Safe Harbor Condominiums SEVENTH Amendment.dwg: PAGES

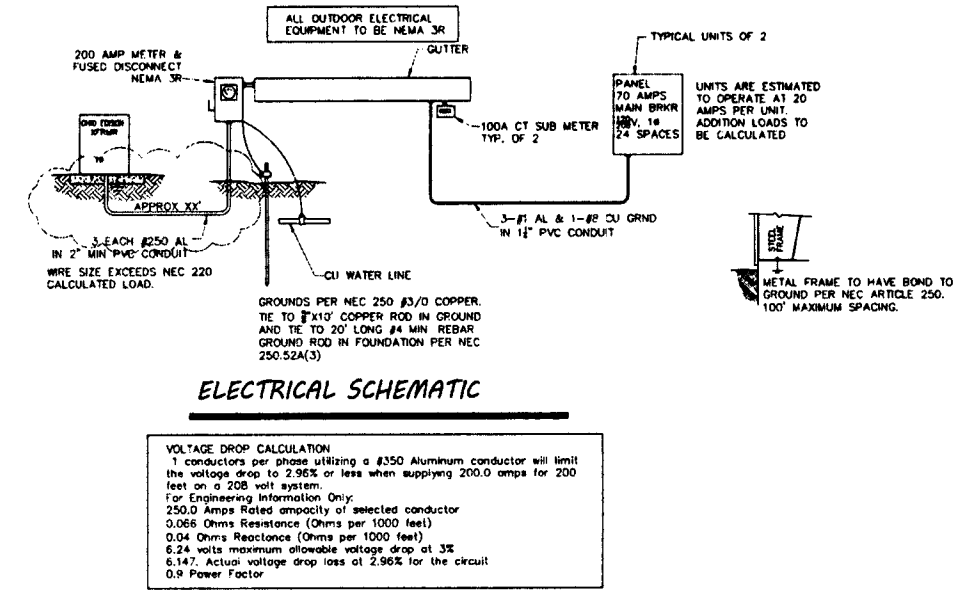
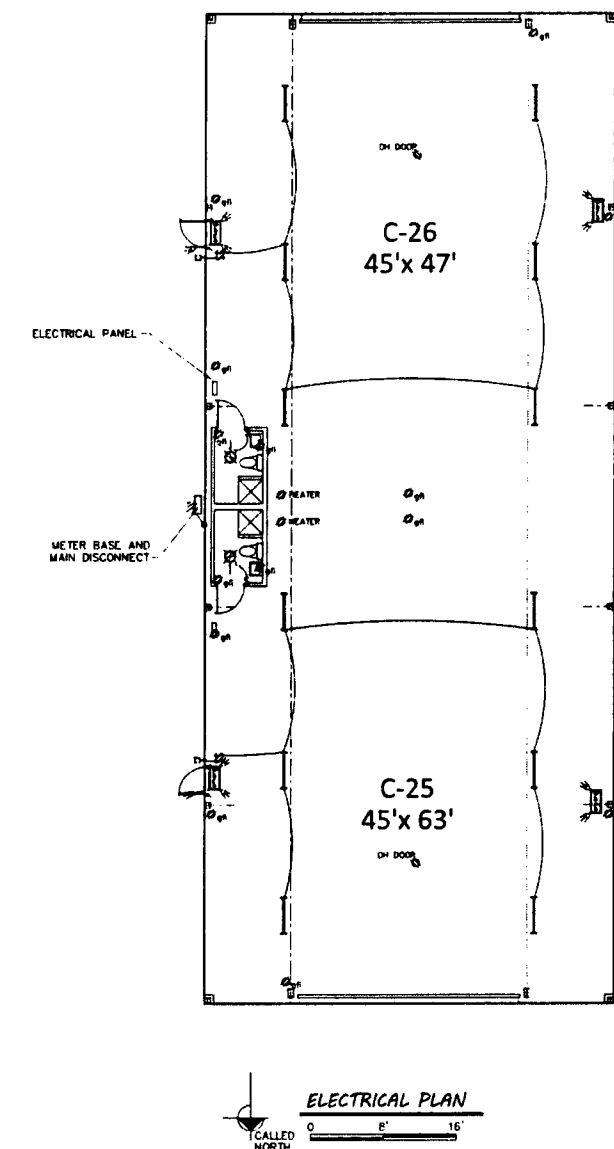


ENGINEER'S CERTIFICATION:
 I HEREBY DECLARE THAT THE DRAWING ACCURATELY SHOWS EACH BUILDING AS BUILT TO THE BEST OF MY KNOWLEDGE AND BELIEF.

Joshua J. O'Neil
 JOSHUA J. O'NEIL, P.E.
 OHIO PROFESSIONAL ENGINEER NO. 69293

6-19-2018
 DATE

SAFE HARBOR STORAGE CONDOMINIUM SEVENTH AMENDMENT
 LOCATED IN PART OF LOT 03, SECTION 04, DANBURY TOWNSHIP, OTTAWA COUNTY, OHIO.



ELECTRICAL NOTES

1. ALL WIRING SHALL BE INSTALLED IN ACCORDANCE WITH THE REQUIREMENTS OF CHAPTER 47 AND THE NATIONAL ELECTRICAL CODE, AS AMENDED, AND THE NATIONAL FIRE ALARM AND SIGNAL CODE, AS AMENDED.
2. ALL WIRING SHALL BE TYPE NM-B (NONMETALLIC COPPER CONDUCTOR) UNLESS OTHERWISE SPECIFIED.
3. ALL WIRING IN DRY OR PVC CONDUIT, OPTIONAL, UNLESS OTHERWISE SPECIFIED BY NEC.
4. INTERFERING STRUCTURE REMOVAL PER NEC 210.17 SHALL BE PROVIDED FOR TELEPHONE, CABLE, SATELLITE, AND OTHER SERVICES.
5. THE CLEARANCES REQUIRED PER NEC SECTION 110-26 SHALL BE MAINTAINED ABOUT THE ELECTRICAL EQUIPMENT.
6. WIRING CIRCuits SHALL BE INSTALLED IN ACCORDANCE WITH THE REQUIREMENTS OF THE NATIONAL ELECTRICAL CODE, AS AMENDED, AND THE NATIONAL FIRE ALARM AND SIGNAL CODE, AS AMENDED.
7. WIRING CIRCuits SHALL BE INSTALLED IN ACCORDANCE WITH THE REQUIREMENTS OF THE NATIONAL ELECTRICAL CODE, AS AMENDED, AND THE NATIONAL FIRE ALARM AND SIGNAL CODE, AS AMENDED.
8. LOCATE DISCONNECTS WITHIN 7' OF EQUIPMENT.

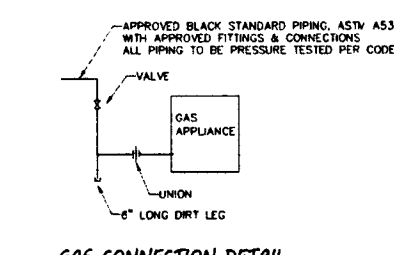
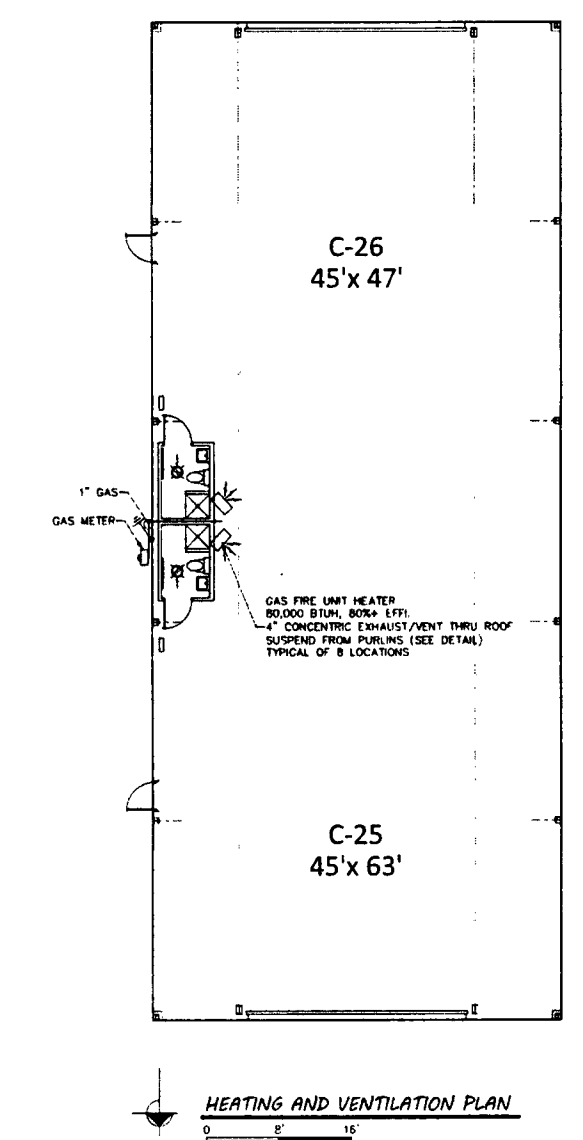
ELECTRICAL SYMBOLS

- 1 SINGLE-POLE SWITCH, MOUNT AT 48" AFF
- 2 GROUND-FULT CURRENT INTERRUPTER (GFI) RECEPTACLE
- 3 GROUND-FULT CURRENT INTERRUPTER (GFI) RECEPTACLE WITH WATERPROOF COVER
- 4 INDUSTRIAL FLUORESCENT LIGHT FIXTURE, 2 BALLS @ 30W/40
- 5 WITH REMOTE HEAD, WIRE MESH OR SHIELD
- 6 HEAD OF FLUORESCENT LIGHTING TO CONFORM TO NEC SECTION 410.10 AND 410.11 TO THE LATEST EDITION OF THE NATIONAL ELECTRICAL CODE, AS AMENDED.
- 7 200 AMP SERVICE METER
- 8 200 AMP SERVICE METER WITH 200 AMP SERVICE METER
- 9 200 AMP SERVICE METER WITH 200 AMP SERVICE METER
- 10 200 AMP SERVICE METER WITH 200 AMP SERVICE METER
- 11 200 AMP SERVICE METER WITH 200 AMP SERVICE METER
- 12 200 AMP SERVICE METER WITH 200 AMP SERVICE METER
- 13 200 AMP SERVICE METER WITH 200 AMP SERVICE METER
- 14 200 AMP SERVICE METER WITH 200 AMP SERVICE METER
- 15 200 AMP SERVICE METER WITH 200 AMP SERVICE METER
- 16 200 AMP SERVICE METER WITH 200 AMP SERVICE METER
- 17 200 AMP SERVICE METER WITH 200 AMP SERVICE METER
- 18 200 AMP SERVICE METER WITH 200 AMP SERVICE METER
- 19 200 AMP SERVICE METER WITH 200 AMP SERVICE METER
- 20 200 AMP SERVICE METER WITH 200 AMP SERVICE METER
- 21 200 AMP SERVICE METER WITH 200 AMP SERVICE METER
- 22 200 AMP SERVICE METER WITH 200 AMP SERVICE METER
- 23 200 AMP SERVICE METER WITH 200 AMP SERVICE METER
- 24 200 AMP SERVICE METER WITH 200 AMP SERVICE METER
- 25 200 AMP SERVICE METER WITH 200 AMP SERVICE METER
- 26 200 AMP SERVICE METER WITH 200 AMP SERVICE METER
- 27 200 AMP SERVICE METER WITH 200 AMP SERVICE METER
- 28 200 AMP SERVICE METER WITH 200 AMP SERVICE METER
- 29 200 AMP SERVICE METER WITH 200 AMP SERVICE METER
- 30 200 AMP SERVICE METER WITH 200 AMP SERVICE METER
- 31 200 AMP SERVICE METER WITH 200 AMP SERVICE METER
- 32 200 AMP SERVICE METER WITH 200 AMP SERVICE METER
- 33 200 AMP SERVICE METER WITH 200 AMP SERVICE METER
- 34 200 AMP SERVICE METER WITH 200 AMP SERVICE METER
- 35 200 AMP SERVICE METER WITH 200 AMP SERVICE METER
- 36 200 AMP SERVICE METER WITH 200 AMP SERVICE METER
- 37 200 AMP SERVICE METER WITH 200 AMP SERVICE METER
- 38 200 AMP SERVICE METER WITH 200 AMP SERVICE METER
- 39 200 AMP SERVICE METER WITH 200 AMP SERVICE METER
- 40 200 AMP SERVICE METER WITH 200 AMP SERVICE METER
- 41 200 AMP SERVICE METER WITH 200 AMP SERVICE METER
- 42 200 AMP SERVICE METER WITH 200 AMP SERVICE METER
- 43 200 AMP SERVICE METER WITH 200 AMP SERVICE METER
- 44 200 AMP SERVICE METER WITH 200 AMP SERVICE METER
- 45 200 AMP SERVICE METER WITH 200 AMP SERVICE METER
- 46 200 AMP SERVICE METER WITH 200 AMP SERVICE METER
- 47 200 AMP SERVICE METER WITH 200 AMP SERVICE METER
- 48 200 AMP SERVICE METER WITH 200 AMP SERVICE METER
- 49 200 AMP SERVICE METER WITH 200 AMP SERVICE METER
- 50 200 AMP SERVICE METER WITH 200 AMP SERVICE METER
- 51 200 AMP SERVICE METER WITH 200 AMP SERVICE METER
- 52 200 AMP SERVICE METER WITH 200 AMP SERVICE METER
- 53 200 AMP SERVICE METER WITH 200 AMP SERVICE METER
- 54 200 AMP SERVICE METER WITH 200 AMP SERVICE METER
- 55 200 AMP SERVICE METER WITH 200 AMP SERVICE METER
- 56 200 AMP SERVICE METER WITH 200 AMP SERVICE METER
- 57 200 AMP SERVICE METER WITH 200 AMP SERVICE METER
- 58 200 AMP SERVICE METER WITH 200 AMP SERVICE METER
- 59 200 AMP SERVICE METER WITH 200 AMP SERVICE METER
- 60 200 AMP SERVICE METER WITH 200 AMP SERVICE METER
- 61 200 AMP SERVICE METER WITH 200 AMP SERVICE METER
- 62 200 AMP SERVICE METER WITH 200 AMP SERVICE METER
- 63 200 AMP SERVICE METER WITH 200 AMP SERVICE METER
- 64 200 AMP SERVICE METER WITH 200 AMP SERVICE METER
- 65 200 AMP SERVICE METER WITH 200 AMP SERVICE METER
- 66 200 AMP SERVICE METER WITH 200 AMP SERVICE METER
- 67 200 AMP SERVICE METER WITH 200 AMP SERVICE METER
- 68 200 AMP SERVICE METER WITH 200 AMP SERVICE METER
- 69 200 AMP SERVICE METER WITH 200 AMP SERVICE METER
- 70 200 AMP SERVICE METER WITH 200 AMP SERVICE METER
- 71 200 AMP SERVICE METER WITH 200 AMP SERVICE METER
- 72 200 AMP SERVICE METER WITH 200 AMP SERVICE METER
- 73 200 AMP SERVICE METER WITH 200 AMP SERVICE METER
- 74 200 AMP SERVICE METER WITH 200 AMP SERVICE METER
- 75 200 AMP SERVICE METER WITH 200 AMP SERVICE METER
- 76 200 AMP SERVICE METER WITH 200 AMP SERVICE METER
- 77 200 AMP SERVICE METER WITH 200 AMP SERVICE METER
- 78 200 AMP SERVICE METER WITH 200 AMP SERVICE METER
- 79 200 AMP SERVICE METER WITH 200 AMP SERVICE METER
- 80 200 AMP SERVICE METER WITH 200 AMP SERVICE METER
- 81 200 AMP SERVICE METER WITH 200 AMP SERVICE METER
- 82 200 AMP SERVICE METER WITH 200 AMP SERVICE METER
- 83 200 AMP SERVICE METER WITH 200 AMP SERVICE METER
- 84 200 AMP SERVICE METER WITH 200 AMP SERVICE METER
- 85 200 AMP SERVICE METER WITH 200 AMP SERVICE METER
- 86 200 AMP SERVICE METER WITH 200 AMP SERVICE METER
- 87 200 AMP SERVICE METER WITH 200 AMP SERVICE METER
- 88 200 AMP SERVICE METER WITH 200 AMP SERVICE METER
- 89 200 AMP SERVICE METER WITH 200 AMP SERVICE METER
- 90 200 AMP SERVICE METER WITH 200 AMP SERVICE METER
- 91 200 AMP SERVICE METER WITH 200 AMP SERVICE METER
- 92 200 AMP SERVICE METER WITH 200 AMP SERVICE METER
- 93 200 AMP SERVICE METER WITH 200 AMP SERVICE METER
- 94 200 AMP SERVICE METER WITH 200 AMP SERVICE METER
- 95 200 AMP SERVICE METER WITH 200 AMP SERVICE METER
- 96 200 AMP SERVICE METER WITH 200 AMP SERVICE METER
- 97 200 AMP SERVICE METER WITH 200 AMP SERVICE METER
- 98 200 AMP SERVICE METER WITH 200 AMP SERVICE METER
- 99 200 AMP SERVICE METER WITH 200 AMP SERVICE METER
- 100 200 AMP SERVICE METER WITH 200 AMP SERVICE METER

ELECTRICAL SCHEMATIC

VOLTAJE DROP CALCULATION
 1. TRANSFORMER ON SERVICE ENTRANCE @ 480V Aluminum conductor will have the voltage drop of 2.5% or less when carrying 2000 amperes for 200 feet at 75°C temperature.
 2. 200 AMP SERVICE METER WITH 200 AMP SERVICE METER
 3. 200 AMP SERVICE METER WITH 200 AMP SERVICE METER
 4. 200 AMP SERVICE METER WITH 200 AMP SERVICE METER
 5. 200 AMP SERVICE METER WITH 200 AMP SERVICE METER
 6. 200 AMP SERVICE METER WITH 200 AMP SERVICE METER
 7. 200 AMP SERVICE METER WITH 200 AMP SERVICE METER
 8. 200 AMP SERVICE METER WITH 200 AMP SERVICE METER
 9. 200 AMP SERVICE METER WITH 200 AMP SERVICE METER
 10. 200 AMP SERVICE METER WITH 200 AMP SERVICE METER
 11. 200 AMP SERVICE METER WITH 200 AMP SERVICE METER
 12. 200 AMP SERVICE METER WITH 200 AMP SERVICE METER
 13. 200 AMP SERVICE METER WITH 200 AMP SERVICE METER
 14. 200 AMP SERVICE METER WITH 200 AMP SERVICE METER
 15. 200 AMP SERVICE METER WITH 200 AMP SERVICE METER
 16. 200 AMP SERVICE METER WITH 200 AMP SERVICE METER
 17. 200 AMP SERVICE METER WITH 200 AMP SERVICE METER
 18. 200 AMP SERVICE METER WITH 200 AMP SERVICE METER
 19. 200 AMP SERVICE METER WITH 200 AMP SERVICE METER
 20. 200 AMP SERVICE METER WITH 200 AMP SERVICE METER
 21. 200 AMP SERVICE METER WITH 200 AMP SERVICE METER
 22. 200 AMP SERVICE METER WITH 200 AMP SERVICE METER
 23. 200 AMP SERVICE METER WITH 200 AMP SERVICE METER
 24. 200 AMP SERVICE METER WITH 200 AMP SERVICE METER
 25. 200 AMP SERVICE METER WITH 200 AMP SERVICE METER
 26. 200 AMP SERVICE METER WITH 200 AMP SERVICE METER
 27. 200 AMP SERVICE METER WITH 200 AMP SERVICE METER
 28. 200 AMP SERVICE METER WITH 200 AMP SERVICE METER
 29. 200 AMP SERVICE METER WITH 200 AMP SERVICE METER
 30. 200 AMP SERVICE METER WITH 200 AMP SERVICE METER
 31. 200 AMP SERVICE METER WITH 200 AMP SERVICE METER
 32. 200 AMP SERVICE METER WITH 200 AMP SERVICE METER
 33. 200 AMP SERVICE METER WITH 200 AMP SERVICE METER
 34. 200 AMP SERVICE METER WITH 200 AMP SERVICE METER
 35. 200 AMP SERVICE METER WITH 200 AMP SERVICE METER
 36. 200 AMP SERVICE METER WITH 200 AMP SERVICE METER
 37. 200 AMP SERVICE METER WITH 200 AMP SERVICE METER
 38. 200 AMP SERVICE METER WITH 200 AMP SERVICE METER
 39. 200 AMP SERVICE METER WITH 200 AMP SERVICE METER
 40. 200 AMP SERVICE METER WITH 200 AMP SERVICE METER
 41. 200 AMP SERVICE METER WITH 200 AMP SERVICE METER
 42. 200 AMP SERVICE METER WITH 200 AMP SERVICE METER
 43. 200 AMP SERVICE METER WITH 200 AMP SERVICE METER
 44. 200 AMP SERVICE METER WITH 200 AMP SERVICE METER
 45. 200 AMP SERVICE METER WITH 200 AMP SERVICE METER
 46. 200 AMP SERVICE METER WITH 200 AMP SERVICE METER
 47. 200 AMP SERVICE METER WITH 200 AMP SERVICE METER
 48. 200 AMP SERVICE METER WITH 200 AMP SERVICE METER
 49. 200 AMP SERVICE METER WITH 200 AMP SERVICE METER
 50. 200 AMP SERVICE METER WITH 200 AMP SERVICE METER
 51. 200 AMP SERVICE METER WITH 200 AMP SERVICE METER
 52. 200 AMP SERVICE METER WITH 200 AMP SERVICE METER
 53. 200 AMP SERVICE METER WITH 200 AMP SERVICE METER
 54. 200 AMP SERVICE METER WITH 200 AMP SERVICE METER
 55. 200 AMP SERVICE METER WITH 200 AMP SERVICE METER
 56. 200 AMP SERVICE METER WITH 200 AMP SERVICE METER
 57. 200 AMP SERVICE METER WITH 200 AMP SERVICE METER
 58. 200 AMP SERVICE METER WITH 200 AMP SERVICE METER
 59. 200 AMP SERVICE METER WITH 200 AMP SERVICE METER
 60. 200 AMP SERVICE METER WITH 200 AMP SERVICE METER
 61. 200 AMP SERVICE METER WITH 200 AMP SERVICE METER
 62. 200 AMP SERVICE METER WITH 200 AMP SERVICE METER
 63. 200 AMP SERVICE METER WITH 200 AMP SERVICE METER
 64. 200 AMP SERVICE METER WITH 200 AMP SERVICE METER
 65. 200 AMP SERVICE METER WITH 200 AMP SERVICE METER
 66. 200 AMP SERVICE METER WITH 200 AMP SERVICE METER
 67. 200 AMP SERVICE METER WITH 200 AMP SERVICE METER
 68. 200 AMP SERVICE METER WITH 200 AMP SERVICE METER
 69. 200 AMP SERVICE METER WITH 200 AMP SERVICE METER
 70. 200 AMP SERVICE METER WITH 200 AMP SERVICE METER
 71. 200 AMP SERVICE METER WITH 200 AMP SERVICE METER
 72. 200 AMP SERVICE METER WITH 200 AMP SERVICE METER
 73. 200 AMP SERVICE METER WITH 200 AMP SERVICE METER
 74. 200 AMP SERVICE METER WITH 200 AMP SERVICE METER
 75. 200 AMP SERVICE METER WITH 200 AMP SERVICE METER
 76. 200 AMP SERVICE METER WITH 200 AMP SERVICE METER
 77. 200 AMP SERVICE METER WITH 200 AMP SERVICE METER
 78. 200 AMP SERVICE METER WITH 200 AMP SERVICE METER
 79. 200 AMP SERVICE METER WITH 200 AMP SERVICE METER
 80. 200 AMP SERVICE METER WITH 200 AMP SERVICE METER
 81. 200 AMP SERVICE METER WITH 200 AMP SERVICE METER
 82. 200 AMP SERVICE METER WITH 200 AMP SERVICE METER
 83. 200 AMP SERVICE METER WITH 200 AMP SERVICE METER
 84. 200 AMP SERVICE METER WITH 200 AMP SERVICE METER
 85. 200 AMP SERVICE METER WITH 200 AMP SERVICE METER
 86. 200 AMP SERVICE METER WITH 200 AMP SERVICE METER
 87. 200 AMP SERVICE METER WITH 200 AMP SERVICE METER
 88. 200 AMP SERVICE METER WITH 200 AMP SERVICE METER
 89. 200 AMP SERVICE METER WITH 200 AMP SERVICE METER
 90. 200 AMP SERVICE METER WITH 200 AMP SERVICE METER
 91. 200 AMP SERVICE METER WITH 200 AMP SERVICE METER
 92. 200 AMP SERVICE METER WITH 200 AMP SERVICE METER
 93. 200 AMP SERVICE METER WITH 200 AMP SERVICE METER
 94. 200 AMP SERVICE METER WITH 200 AMP SERVICE METER
 95. 200 AMP SERVICE METER WITH 200 AMP SERVICE METER
 96. 200 AMP SERVICE METER WITH 200 AMP SERVICE METER
 97. 200 AMP SERVICE METER WITH 200 AMP SERVICE METER
 98. 200 AMP SERVICE METER WITH 200 AMP SERVICE METER
 99. 200 AMP SERVICE METER WITH 200 AMP SERVICE METER
 100. 200 AMP SERVICE METER WITH 200 AMP SERVICE METER

DATE 12/4/17
 REVIEW
 DESIGN
 PRELIMINARY NOT FOR CONSTRUCTION
 JOB NO. 17003
 ET

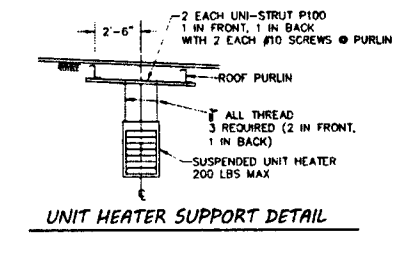


HWAC NOTES & SYMBOLS

1. MECHANICAL EQUIPMENT SHALL BE INSTALLED IN ACCORDANCE WITH ITS UNDERWRITER APPROVAL, THE MANUFACTURER'S RECOMMENDATIONS, SPECIFICATIONS AND GOOD ENGINEERING PRACTICES.
2. MOTOR VEHICLES SHALL BE INSTALLED IN ACCORDANCE WITH THE NATIONAL FIRE ALARM AND SIGNAL CODE, AS AMENDED.
3. ALL WIRING SHALL BE INSTALLED IN ACCORDANCE WITH THE REQUIREMENTS OF THE NATIONAL ELECTRICAL CODE, AS AMENDED, AND THE NATIONAL FIRE ALARM AND SIGNAL CODE, AS AMENDED.
4. LOCATE DISCONNECTS WITHIN 7' OF EQUIPMENT.

NATURAL VENTILATION PER OMC 402

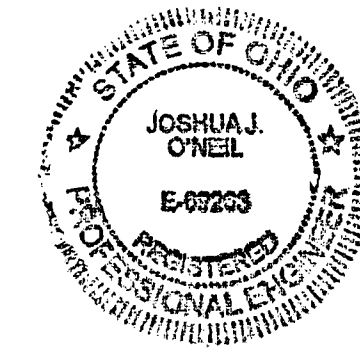
UNIT	AREA OF UNITS/ROOMS AREA	COMPLY
C-26	2115	
C-25	2835	



DATE 12/4/17
 REVIEW
 DESIGN
 PRELIMINARY NOT FOR CONSTRUCTION
 JOB NO. 17003
 MT

PLOTTED: Jun 19, 2018 - 8:28am
 DRAWING: M:\5000 (Safe Harbor Building Layout)\SURVE\Draw\22-34 Safe Harbor Condominiums SEVENTH Amendment.dwg: PAGES

SAFE HARBOR STORAGE
 CONDOMINIUM
 SEVENTH AMENDMENT
 LOCATED IN PART OF LOT 03, SECTION 04, DANBURY
 TOWNSHIP, OTTAWA COUNTY, OHIO.



ENGINEER'S CERTIFICATION:
 I HEREBY DECLARE THAT THE DRAWING ACCURATELY SHOWS EACH BUILDING AS BUILT TO THE BEST OF MY KNOWLEDGE AND BELIEF.
 Joshua J. O'Neil
 6.19.2018
 DATE
 JOSHUA J. O'NEIL, P.E.
 OHIO PROFESSIONAL ENGINEER NO. 69263