

PLOTTED: Jan 13, 2022 - 1:00pm
 DRAWING: M:\191682 (Safe Harbor - 19 General Services Agreement)\Safe Harbor Condominium Survey\Drawings\22-234 Safe Harbor Condominium Seventeenth Amendment.dwg - PAGE3

DOOR WINDOW & ROOF NOTES
 REFER TO ALL APPLICABLE NOTES FROM THE GENERAL CONTRACT DOCUMENTS FOR THE MOST RECENT REVISIONS.
 ALL DOORS AND WINDOWS SHALL BE INSTALLED AND OPERATED AS SHOWN UNLESS OTHERWISE NOTED.
 ALL ROOFING SHALL BE INSTALLED AND OPERATED AS SHOWN UNLESS OTHERWISE NOTED.
 ALL FINISHES SHALL BE INSTALLED AND OPERATED AS SHOWN UNLESS OTHERWISE NOTED.

DOOR SCHEDULE
 2'-0" EXTERIOR METAL DOOR, LEVER HANDLE, CLOSER
 2'-0" INTERIOR METAL DOOR, LEVER HANDLE, CLOSER
 2'-0" INTERIOR METAL DOOR, LEVER HANDLE, PRIVATE LOCKSET
 2'-0" OVERHEAD DOOR, INSULATED & WEATHER SEALED

DOOR THRESHOLD DETAIL
 SECTION A-A
 SECTION B-B

ANCHOR BOLT PLAN
 NOTE: SEE SHEET A1 FOR ANCHOR BOLT PLAN
 NORTH ELEVATION (SOUTH SIMILAR)
 EAST ELEVATION - WEST SIMILAR
 NOTE: WEST SIDE NO DOORS

DATE: 12/14/17
 REVIEW: 12/14/17
 DESIGNER: [Signature]
 PROJECT: [Project Name]

FOUNDATION PLAN
 E-25
 E-26

FOUNDATION PLAN DETAILS
 PLAN TYP.
 SECTION A-A
 SECTION B-B
 SECTION C-C

ANCHOR BOLT DETAIL
 SECTION
 NOTE: SEE SHEET A1 FOR ANCHOR BOLT PLAN

COMMENTS:
 ALL FOUNDATIONS SHALL BE INSTALLED AND OPERATED AS SHOWN UNLESS OTHERWISE NOTED.
 ALL CONCRETE SHALL BE INSTALLED AND OPERATED AS SHOWN UNLESS OTHERWISE NOTED.

DATE: 12/14/17
 REVIEW: 12/14/17
 DESIGNER: [Signature]
 PROJECT: [Project Name]

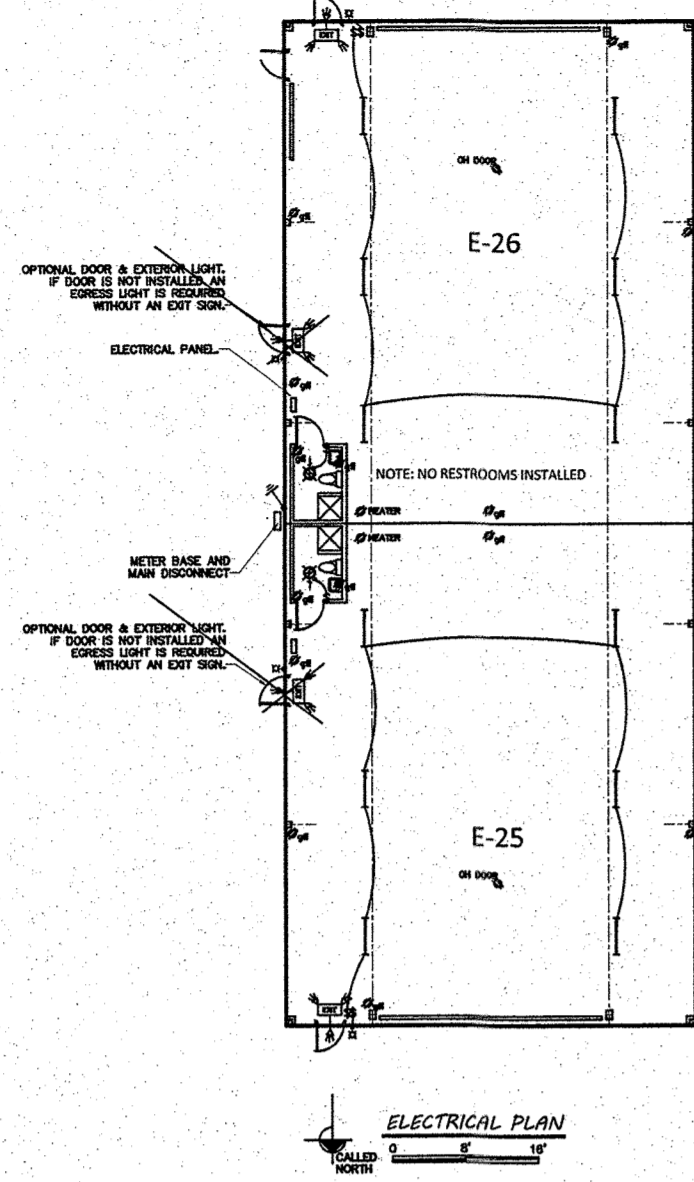
PLUMBING PLAN
 E-25
 E-26
 NOTE: UTILITY AND WATER SERVICE TAPS INSTALLED INTO BUILDING

PLUMBING SCHEMATIC
 TO ALL APPROVED
 WATER MAINS
 TO ALL APPROVED
 SEWER MAINS

PLUMBING NOTES:
 ALL PLUMBING WORK TO CONFORM TO THE OHIO PLUMBING CODE (OPC) AND CHAPTER 55 OF THE O.C.D.
 THE PLUMBING CONTRACTOR SHALL PROVIDE AND INSTALL ALL DRAINAGE, VENTING, AND VENTING PERMITS FOR ALL PLUMBING WORK.
 WATER MAINS AND SEWER MAINS SHALL BE INSTALLED AND OPERATED AS SHOWN UNLESS OTHERWISE NOTED.
 ALL LOCATIONS WHERE WATER IS REQUIRED FOR THE BUILDING PURPOSES SHALL BE INSTALLED AND OPERATED AS SHOWN UNLESS OTHERWISE NOTED.
 ALL LOCATIONS WHERE WATER IS REQUIRED FOR THE BUILDING PURPOSES SHALL BE INSTALLED AND OPERATED AS SHOWN UNLESS OTHERWISE NOTED.
 ALL LOCATIONS WHERE WATER IS REQUIRED FOR THE BUILDING PURPOSES SHALL BE INSTALLED AND OPERATED AS SHOWN UNLESS OTHERWISE NOTED.

DATE: 12/14/17
 REVIEW: 12/14/17
 DESIGNER: [Signature]
 PROJECT: [Project Name]

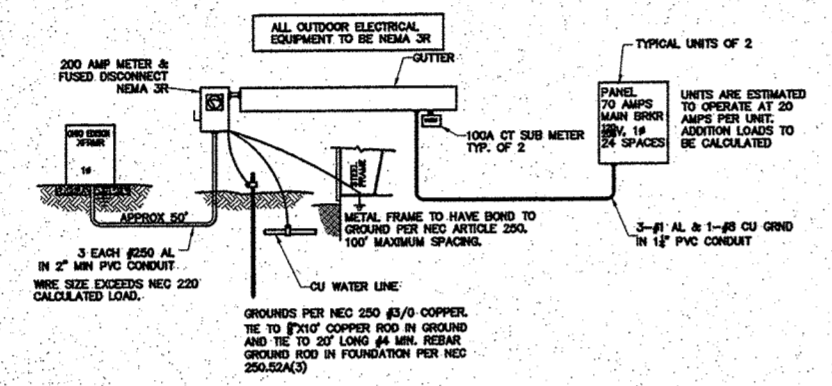
SAFE HARBOR STORAGE CONDOMINIUM SEVENTEENTH AMENDMENT
 LOCATED IN PART OF LOT 03, SECTION 04, DANBURY TOWNSHIP, OTTAWA COUNTY, OHIO.



ELECTRICAL PLAN

- ELECTRICAL NOTES
1. ALL WIRING SHALL BE TYPE NM-B...
2. THE OVERCURRENT PROTECTION FOR...
3. THE OVERCURRENT PROTECTION FOR...
4. BRANCH CIRCUIT CONDUITS...
5. BRANCH CIRCUIT CONDUITS AND EQUIPMENT...
6. LOCATE RECESSIBLE SWITCHES...
7. BRANCH CIRCUIT CONDUITS AND EQUIPMENT...
8. BRANCH CIRCUIT CONDUITS AND EQUIPMENT...
9. BRANCH CIRCUIT CONDUITS AND EQUIPMENT...
10. BRANCH CIRCUIT CONDUITS AND EQUIPMENT...

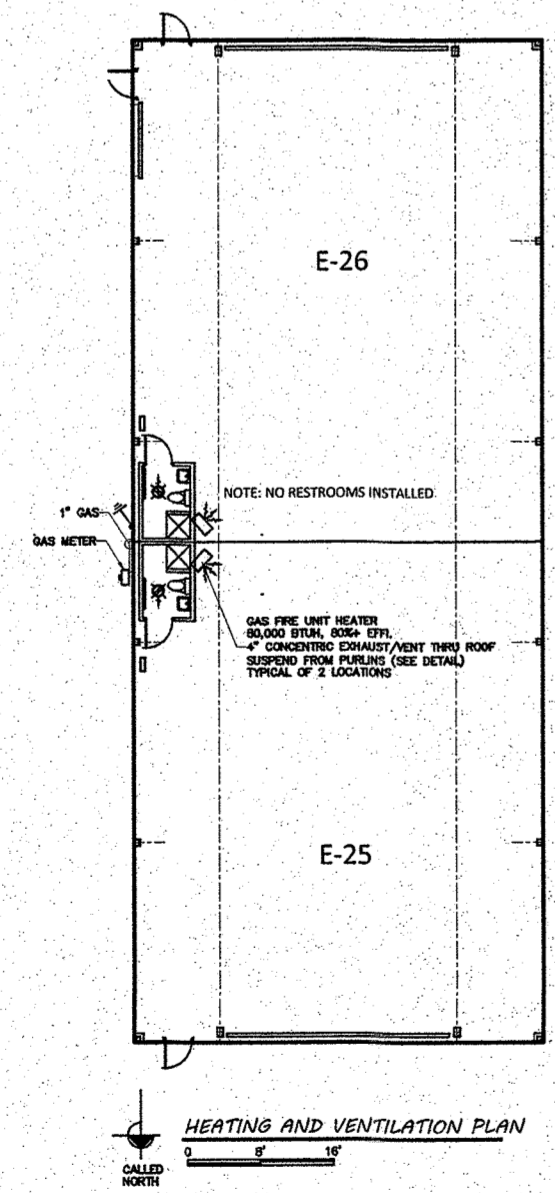
- ELECTRICAL SYMBOLS
1. SINGLE-PHASE SWITCH, HEIGHT AT 48" AFF.
2. GROUND-Fault CIRCUIT INTERRUPTER (GFCI) RECEPTACLE.
3. GROUND-Fault CIRCUIT INTERRUPTER (GFCI) RECEPTACLE WITH WATERSHIELD COVER.
4. INDUSTRIAL FLUORESCENT LIGHT FIXTURE, 2 BALLAST & 84W HID.
5. 15 WATT LED EXTERIOR LIGHT FIXTURE ON POOL DECK.
6. 15 WATT LED EXTERIOR LIGHT FIXTURE ON POOL DECK WITH RECESSED HEAD.
7. WALL FLUORESCENT LIGHT FIXTURE, 60W OR EQUIVALENT NEXT TO THE OUTSIDE.



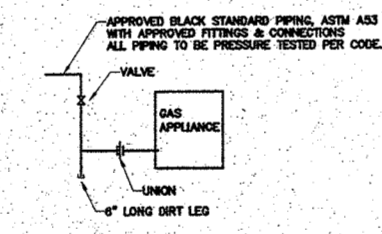
ELECTRICAL SCHEMATIC

VOLTADE DROP CALCULATION
1. DETERMINE THE VOLTAGE DROP...
2. THE VOLTAGE DROP...
3. THE VOLTAGE DROP...
4. THE VOLTAGE DROP...
5. THE VOLTAGE DROP...
6. THE VOLTAGE DROP...
7. THE VOLTAGE DROP...
8. THE VOLTAGE DROP...

REEL ENGINEERING logo, date 12/14/21, revision 12/16/21, and professional engineer seal for Matthew E. Tietze.



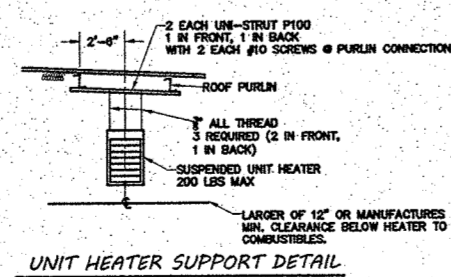
HEATING AND VENTILATION PLAN



GAS CONNECTION DETAIL

HVAC NOTES & SYMBOLS
1. MECHANICAL EQUIPMENT SHALL BE INSTALLED IN ACCORDANCE WITH ITS MANUFACTURER'S RECOMMENDATIONS, SPECIFICATIONS AND LOCAL BUILDING PRACTICES.
2. THE EQUIPMENT SHALL BE INSTALLED IN ACCORDANCE WITH ITS MANUFACTURER'S RECOMMENDATIONS, SPECIFICATIONS AND LOCAL BUILDING PRACTICES.
3. THE EQUIPMENT SHALL BE INSTALLED IN ACCORDANCE WITH ITS MANUFACTURER'S RECOMMENDATIONS, SPECIFICATIONS AND LOCAL BUILDING PRACTICES.
4. THE EQUIPMENT SHALL BE INSTALLED IN ACCORDANCE WITH ITS MANUFACTURER'S RECOMMENDATIONS, SPECIFICATIONS AND LOCAL BUILDING PRACTICES.

NATURAL VENTILATION PER OMC 402 table with columns for unit, area, and volume.



UNIT HEATER SUPPORT DETAIL

REEL ENGINEERING logo, date 12/14/21, revision 12/16/21, and professional engineer seal for Matthew E. Tietze.

SAFE HARBOR STORAGE CONDOMINIUM SEVENTEENTH AMENDMENT

LOCATED IN PART OF LOT 03, SECTION 04, DANBURY TOWNSHIP, OTTAWA COUNTY, OHIO.