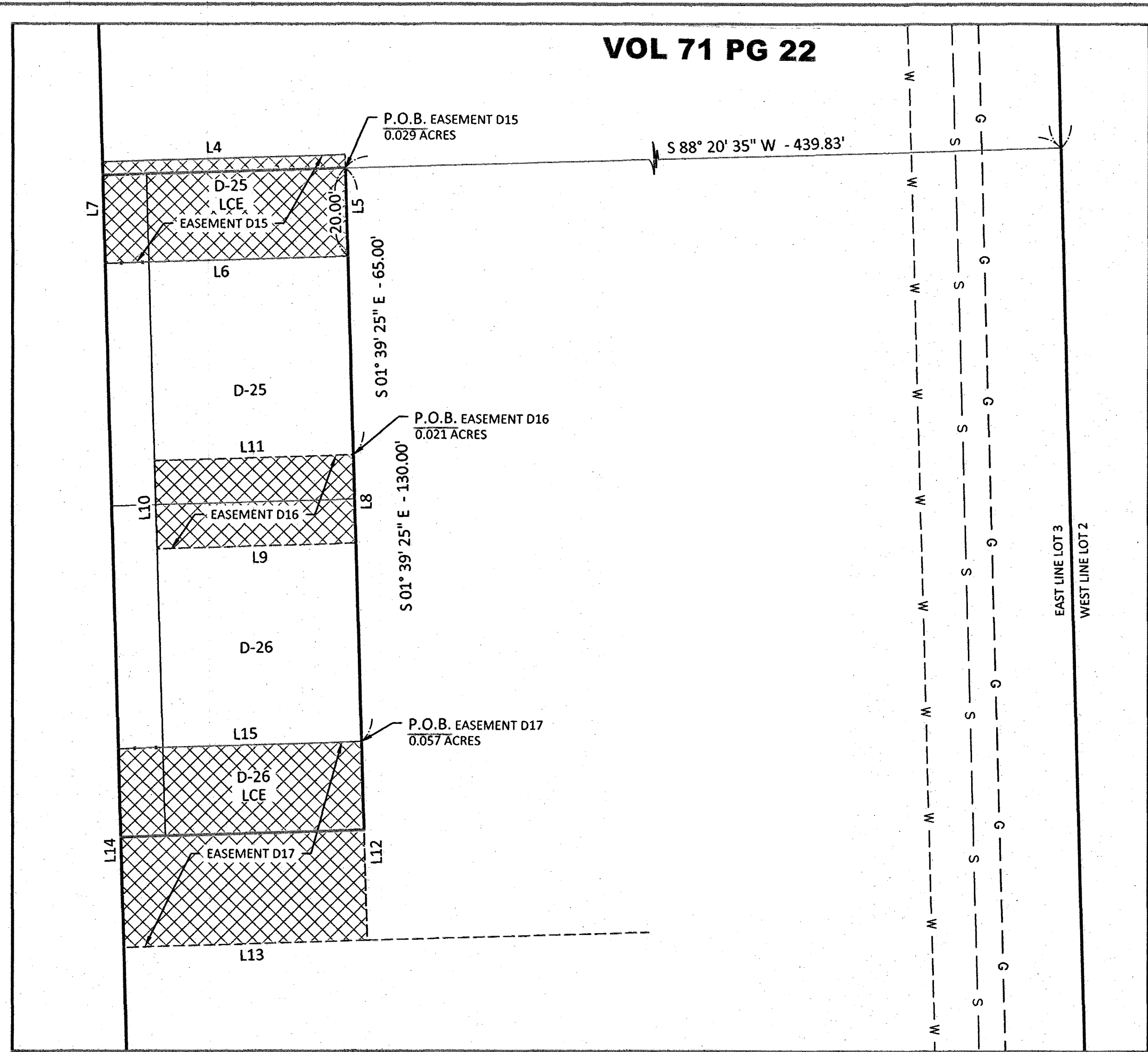
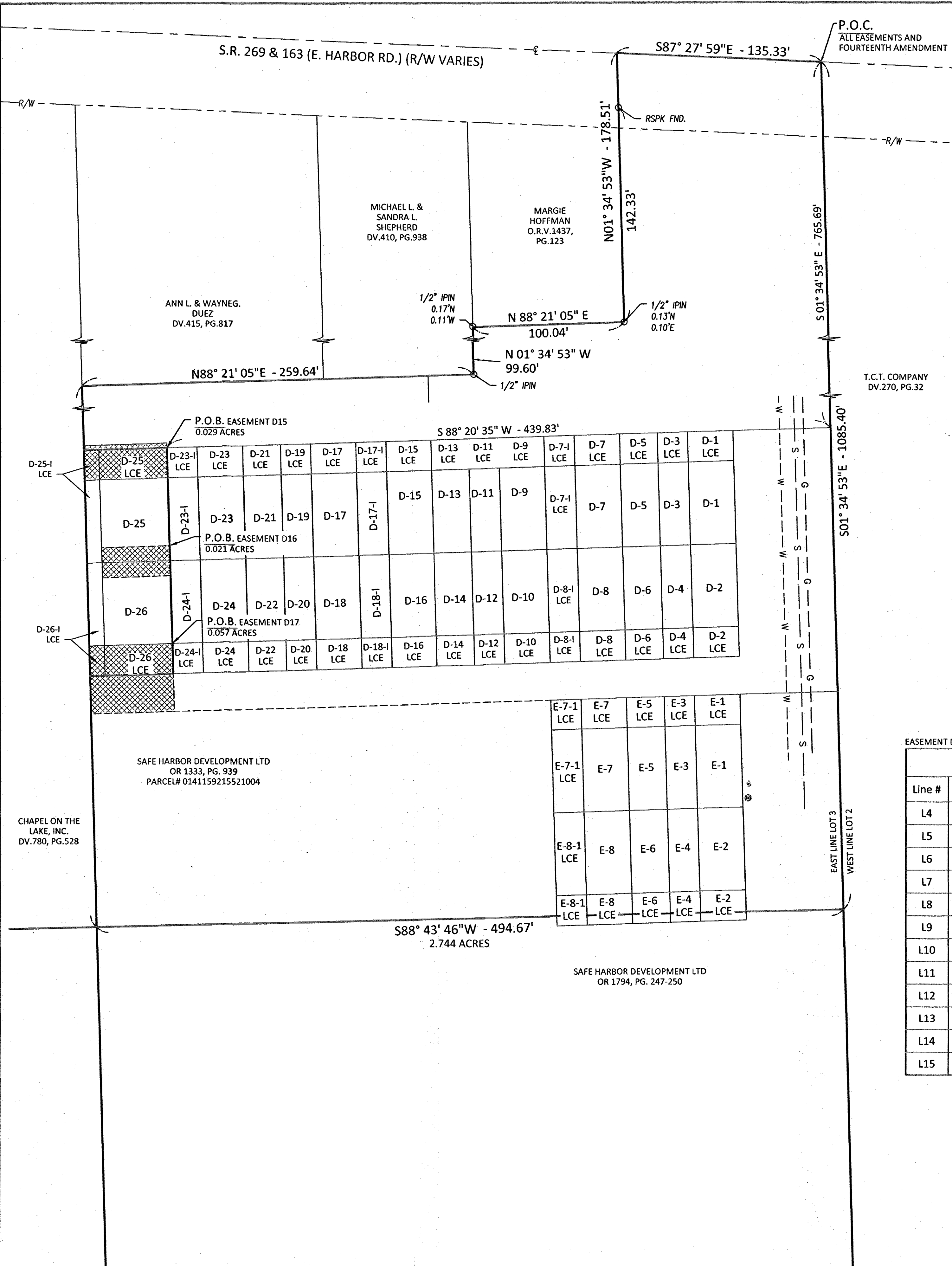


PLOTTED: Jan 15, 2021 - 10:28am
 DRAWING: M:\9082 (Safe Harbor - 19 General Services Agreement)\Safe Harbor Condominium\Survey\Draw\22434 Safe Harbor Condominium Fourteenth Amendment.dwg: PAGE2



VOL 71 PG 22

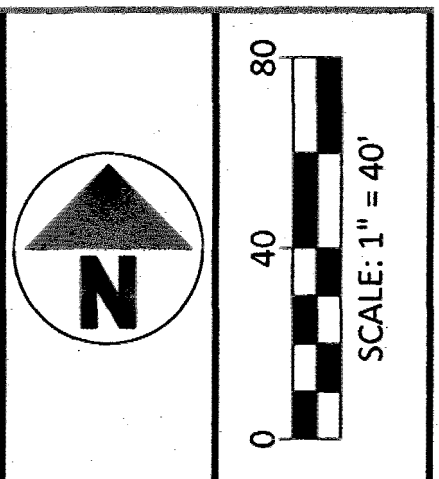
SCALE: 1"=20'

EASEMENT DIMENSIONS

Line #	Direction	Length
L4	N 88° 20' 35" E	54.83'
L5	S 01° 39' 25" E	23.01'
L6	S 88° 20' 35" W	54.86'
L7	N 01° 34' 53" W	23.01'
L8	S 01° 39' 25" E	20.00'
L9	S 88° 20' 35" W	45.00'
L10	N 01° 39' 25" W	20.00'
L11	N 88° 20' 35" E	45.00'
L12	S 01° 39' 25" E	45.00'
L13	S 88° 20' 35" W	55.07'
L14	N 01° 34' 53" W	45.00'
L15	N 88° 20' 35" E	55.01'

- LEGEND**
- MONUMENT FOUND
 - MONUMENT SET
 - (C) CALCULATED DISTANCE
 - (M) MEASURED DISTANCE
 - (REC) RECORD DISTANCE
 - R/W RIGHT-OF-WAY
 - P.O.B. POINT OF BEGINNING
 - P.O.C. POINT OF COMMENCEMENT
 - UNITS
 - LIMITED COMMON ELEMENT
 - EASEMENT

- REFERENCES**
- DEEDS AS SHOWN.
 - SAFE HARBOR STORAGE CONDOMINIUM FIRST AMENDMENT, PLAT VOLUME 62, PAGE 24.
 - SAFE HARBOR STORAGE CONDOMINIUM, PLAT VOLUME 60, PAGE 17.
 - SAFE HARBOR STORAGE CONDOMINIUM THIRD AMENDMENT, PLAT VOLUME 63, PAGE 48.
 - SAFE HARBOR STORAGE CONDOMINIUM FOURTH AMENDMENT, PLAT VOLUME 64, PAGE 29.
 - SAFE HARBOR STORAGE CONDOMINIUM FIFTH AMENDMENT, PLAT VOLUME 65, PAGE 2.
 - SAFE HARBOR STORAGE CONDOMINIUM SIXTH AMENDMENT, PLAT VOLUME 66, PAGE 17.
 - SAFE HARBOR STORAGE CONDOMINIUM SEVENTH AMENDMENT, PLAT VOLUME 67, PAGE 36.
 - SAFE HARBOR STORAGE CONDOMINIUM EIGHTH AMENDMENT, PLAT VOLUME 67, PAGE 50.
 - SAFE HARBOR STORAGE CONDOMINIUM ELEVENTH AMENDMENT, PLAT VOLUME 69, PAGE 13.
 - SAFE HARBOR STORAGE CONDOMINIUM TWELFTH AMENDMENT, PLAT VOLUME 69, PAGE 55.
 - SAFE HARBOR STORAGE CONDOMINIUM THIRTEENTH AMENDMENT, PLAT VOLUME 70, PAGE 47.



NO	REVISION	DATE
9		
8		
7		
6		
5		
4		
3		
2		
1		

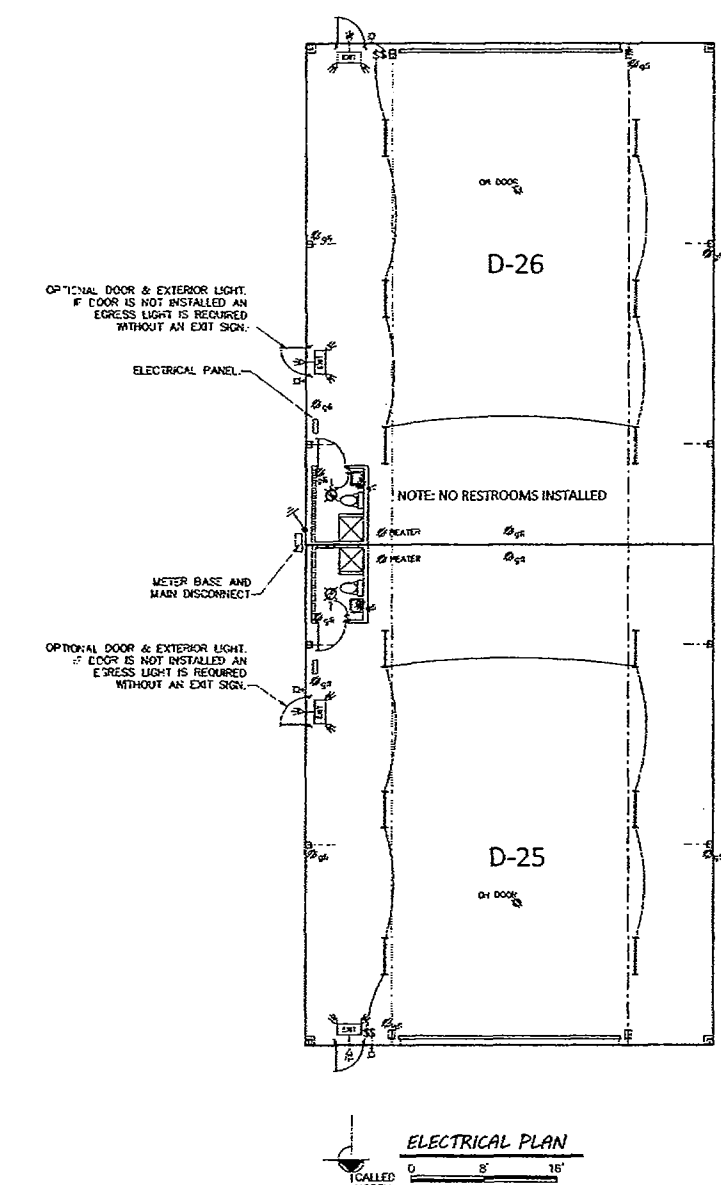
DGL CONSULTING ENGINEERS, LLC
 3455 BRIARFIELD BLVD, SUITE E
 MAUMEE, OH 43537
 PHONE: 419.335.1015
 www.dgl-hd.com

SAFE HARBOR STORAGE CONDOMINIUM
FOURTEENTH AMENDMENT

LOCATED IN PART OF LOT 03, SECTION 04, DANBURY TOWNSHIP, OTTAWA COUNTY, OHIO.

FILE:	FOURTEENTH
JOB NO.:	19082
DRAWN BY:	KEY/GSW
ISSUED:	01/15/2021

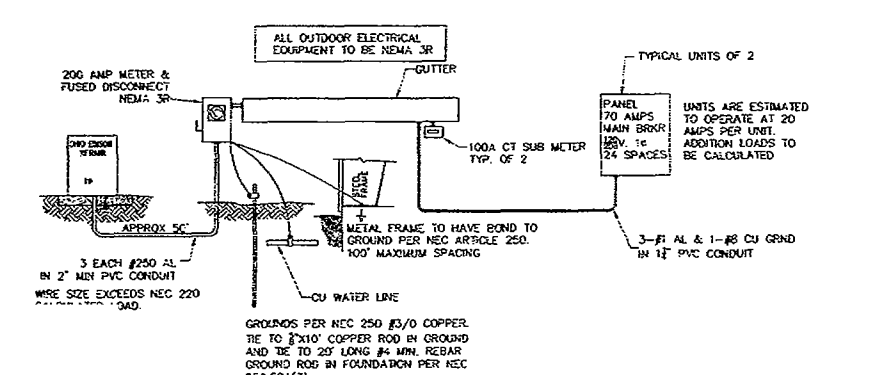
2/4



ELECTRICAL PLAN

- ELECTRICAL NOTES**
1. ALL ELECTRICAL WORK SHALL COMPLY WITH THE REQUIREMENTS OF CHAPTER 107 OF THE NATIONAL ELECTRICAL CODE WITH ALL THE APPROVED AMENDMENTS AND IS SUBJECT TO THE APPROVAL OF THE LOCAL AUTHORITY JUNE 2019.
 2. ALL WIRING SHALL BE PVC TYPE OR RATED/TESTED COPPER CONDUIT PER ARTICLE 304. ALL WIRING SHALL BE IN PVC CONDUIT UNLESS OTHERWISE NOTED. ALL WIRING SHALL BE IN PVC CONDUIT UNLESS OTHERWISE NOTED. ALL WIRING SHALL BE IN PVC CONDUIT UNLESS OTHERWISE NOTED.
 3. ALL WIRING IN EXISTING PVC CONDUIT ORIGINAL WIRE SHALL BE MAINTAINED UNLESS OTHERWISE NOTED. ALL WIRING IN EXISTING PVC CONDUIT ORIGINAL WIRE SHALL BE MAINTAINED UNLESS OTHERWISE NOTED.
 4. ALL WIRING IN EXISTING PVC CONDUIT ORIGINAL WIRE SHALL BE MAINTAINED UNLESS OTHERWISE NOTED. ALL WIRING IN EXISTING PVC CONDUIT ORIGINAL WIRE SHALL BE MAINTAINED UNLESS OTHERWISE NOTED.
 5. BRANCH CIRCUIT CONDUCTORS SHALL HAVE AN AMPLITUDE OF NOT LESS THAN THE MAXIMUM LOAD TO BE SERVED. BRANCH CIRCUIT CONDUCTORS SHALL HAVE AN AMPLITUDE OF NOT LESS THAN THE MAXIMUM LOAD TO BE SERVED.
 6. BRANCH CIRCUIT CONDUCTORS AND EQUIPMENT SHALL BE PROTECTED BY OVER CURRENT DEVICES (OCD) AS REQUIRED BY ARTICLE 240-2 OF THE NATIONAL ELECTRICAL CODE. BRANCH CIRCUIT CONDUCTORS AND EQUIPMENT SHALL BE PROTECTED BY OVER CURRENT DEVICES (OCD) AS REQUIRED BY ARTICLE 240-2 OF THE NATIONAL ELECTRICAL CODE.
 7. BRANCH CIRCUIT CONDUCTORS SHALL BE PROTECTED BY OVER CURRENT DEVICES (OCD) AS REQUIRED BY ARTICLE 240-2 OF THE NATIONAL ELECTRICAL CODE. BRANCH CIRCUIT CONDUCTORS SHALL BE PROTECTED BY OVER CURRENT DEVICES (OCD) AS REQUIRED BY ARTICLE 240-2 OF THE NATIONAL ELECTRICAL CODE.
 8. LOCATE DISCONNECTS WITHIN 3' OF EQUIPMENT.

- ELECTRICAL SYMBOLS**
- 1 SINGLE-POLE SWITCH HEIGHT 11 FT AFF
 - 2 GROUND-Fault CURRENT INTERRUPTER (GFCI) RECEPTACLE
 - 3 GROUND-Fault CURRENT INTERRUPTER (GFCI) RECEPTACLE WITH WIRELESS COMM
 - 4 INDUSTRIAL FLUORESCENT LIGHT FIXTURE, 2 BALLS @ 54W 110
 - 5 15 WATT LED EXTERIOR LIGHT FIXTURE ON PHOTO CELL



ELECTRICAL SCHEMATIC

VOLTAGE DROP CALCULATION

1.000 AMP SERVICE

2.000 AMP SERVICE

3.000 AMP SERVICE

4.000 AMP SERVICE

5.000 AMP SERVICE

6.000 AMP SERVICE

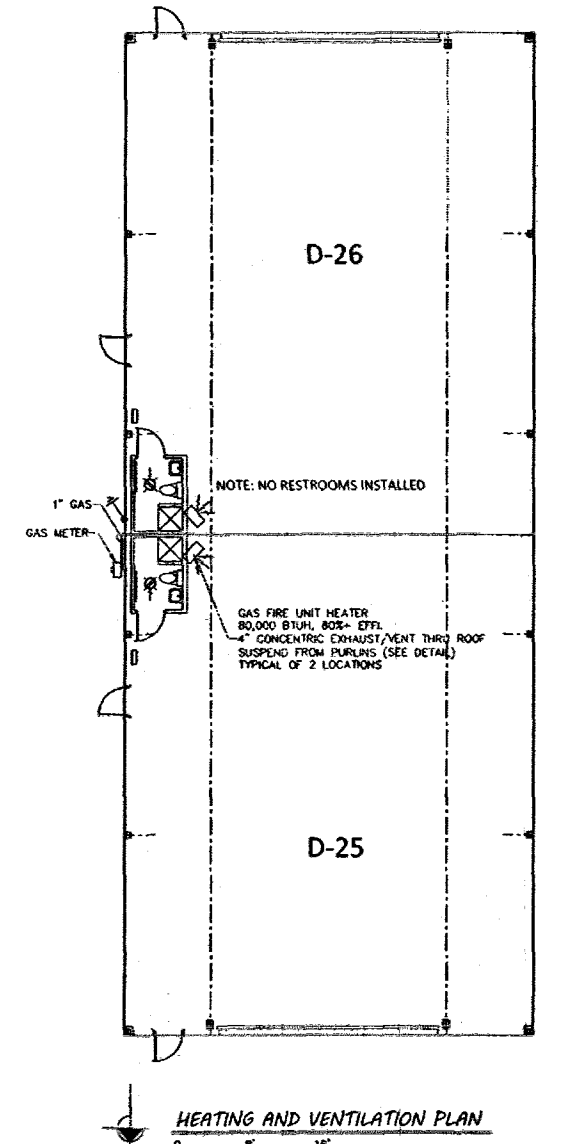
7.000 AMP SERVICE

8.000 AMP SERVICE

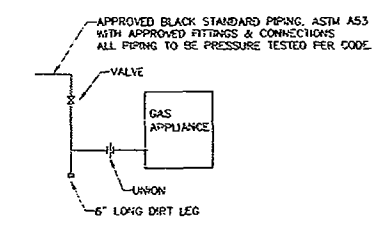
9.000 AMP SERVICE

10.000 AMP SERVICE

DATE: 12/14/17
 REVISION: 12/14/17
 PROJECT: SAFE HARBOR STORAGE CONDOMINIUM
 DRAWING NO: 01/19/02
 JUN 10 1963
 E7



HEATING AND VENTILATION PLAN

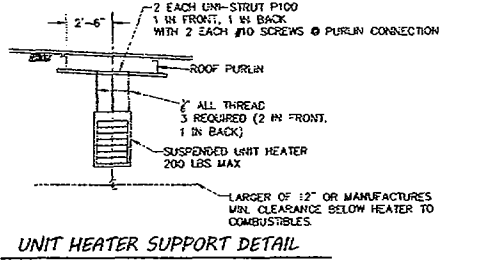


GAS CONNECTION DETAIL

- HVAC NOTES & SYMBOLS**
1. MECHANICAL EQUIPMENT SHALL BE INSTALLED IN ACCORDANCE WITH ITS MANUFACTURER'S RECOMMENDATIONS, OPERATIONAL AND GOOD INDUSTRY PRACTICES.
 2. MECHANICAL EQUIPMENT SHALL BE INSTALLED IN ACCORDANCE WITH ITS MANUFACTURER'S RECOMMENDATIONS, OPERATIONAL AND GOOD INDUSTRY PRACTICES.

NATURAL VENTILATION PER OMC 902

UNIT	AREA OF OPENING (SQ. FT.)	AREA OF FLOOR (SQ. FT.)	COMPARISON
D-25	1.00	100.00	1%
D-26	1.00	100.00	1%



UNIT HEATER SUPPORT DETAIL

DATE: 12/14/17
 REVISION: 12/14/17
 PROJECT: SAFE HARBOR STORAGE CONDOMINIUM
 DRAWING NO: 01/19/02
 JUN 10 1963
 M1

PLOTTED: Jan 21, 2021 - 10:56am
 DRAWING: M:\19092 (Safe Harbor) - 19 General Services Agreement\Survey\22x34 Safe Harbor Condominiums Fourteenth Amendment.dwg - PAGE 4

SAFE HARBOR STORAGE
 CONDOMINIUM
 FOURTEENTH AMENDMENT
 LOCATED IN PART OF LOT 03, SECTION 04, DANBURY
 TOWNSHIP, OTTAWA COUNTY, OHIO.