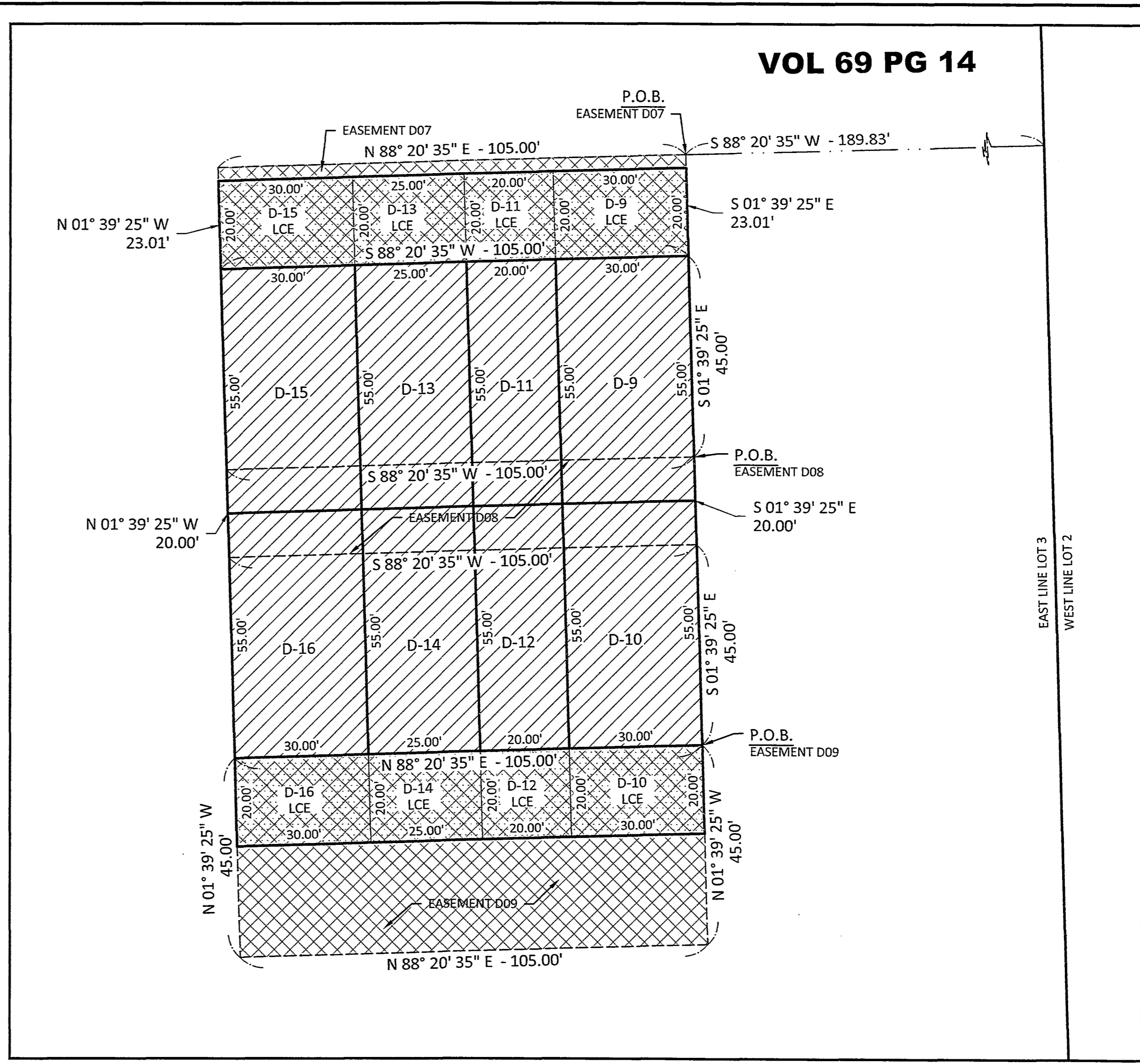
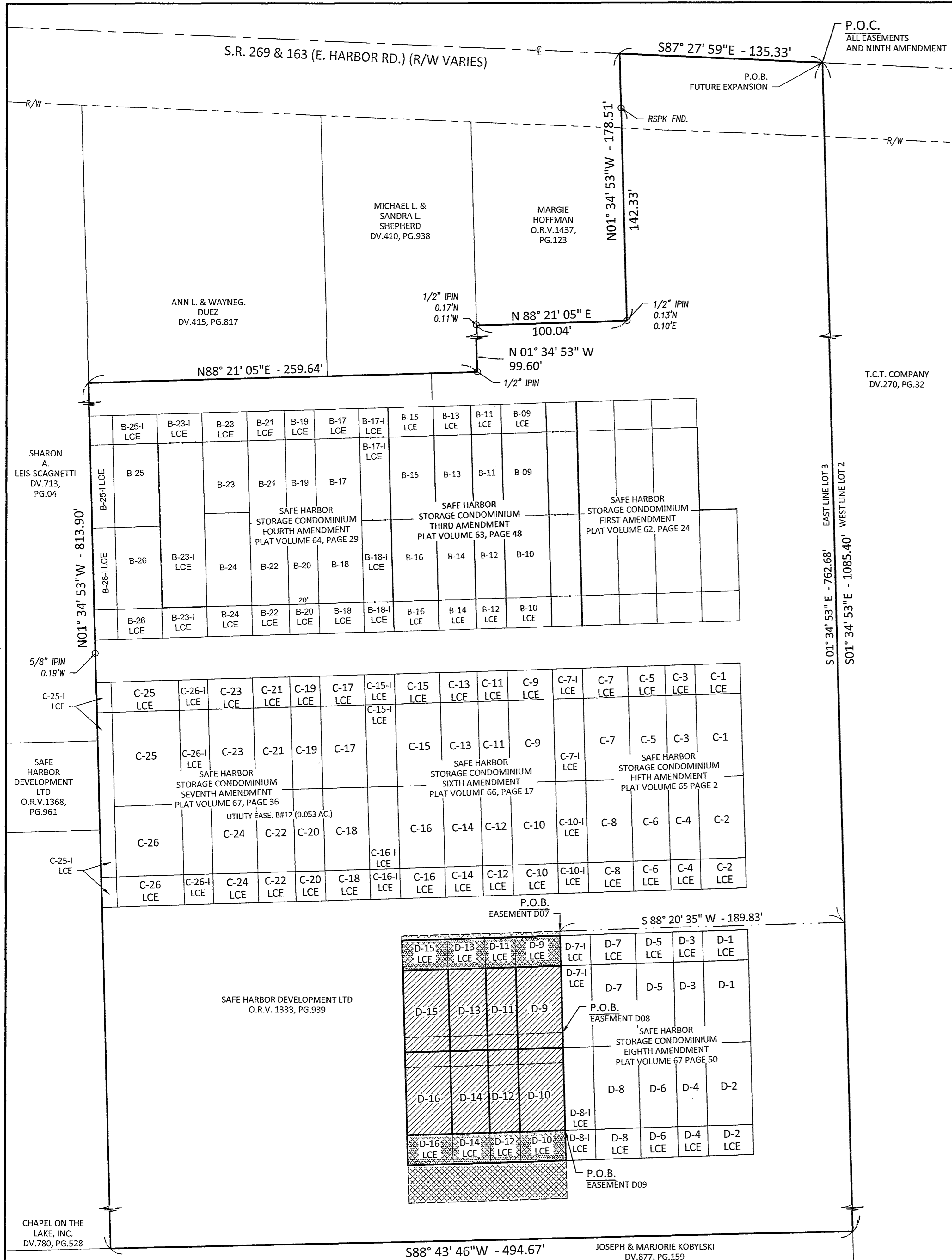


PLOTTED: Jul 25, 2019 - 1:39pm
 DRAWING: W\15080 (Safe Harbor Development - Safe Harbor Building Layout)\SURVEY(Dwg)\22x34 Safe Harbor Condominiums ELEVENTH Amendment.dwg - PAGE 2



SCALE: 1"=20'

LEGEND

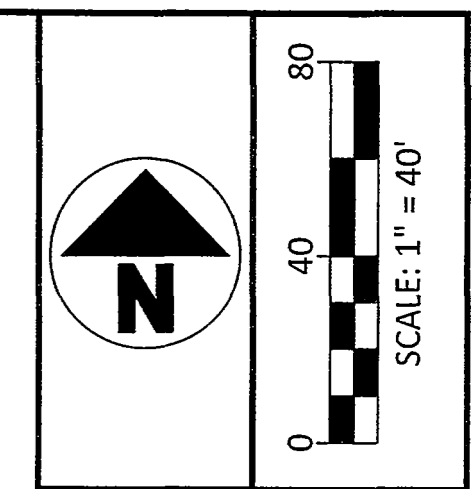
- MONUMENT FOUND
- MONUMENT SET
- (C) CALCULATED DISTANCE
- (M) MEASURED DISTANCE
- (REC) RECORD DISTANCE
- R/W RIGHT-OF-WAY
- P.O.B. POINT OF BEGINNING
- P.O.C. POINT OF COMMENCEMENT
- UNIT
- LIMITED COMMON ELEMENT
- EASEMENT

REFERENCES

- DEEDS AS SHOWN.
- SAFE HARBOR STORAGE CONDOMINIUM FIRST AMENDMENT, PLAT VOLUME 62, PAGE 24.
- SAFE HARBOR STORAGE CONDOMINIUM, PLAT VOLUME 60, PAGE 17.
- SAFE HARBOR STORAGE CONDOMINIUM THIRD AMENDMENT, PLAT VOLUME 63, PAGE 48.
- SAFE HARBOR STORAGE CONDOMINIUM FOURTH AMENDMENT, PLAT VOLUME 64, PAGE 29.
- SAFE HARBOR STORAGE CONDOMINIUM FIFTH AMENDMENT, PLAT VOLUME 65, PAGE 2.
- SAFE HARBOR STORAGE CONDOMINIUM SIXTH AMENDMENT, PLAT VOLUME 66, PAGE 17.
- SAFE HARBOR STORAGE CONDOMINIUM SEVENTH AMENDMENT, PLAT VOLUME 67, PAGE 36.
- SAFE HARBOR STORAGE CONDOMINIUM EIGHTH AMENDMENT, PLAT VOLUME 67, PAGE 50.



SURVEYOR'S CERTIFICATION:
 I HEREBY DECLARE THAT THE DRAWING ACCURATELY REFLECTS THE LOCATION OF IMPROVEMENTS AND RECORDED EASEMENTS TO THE BEST OF MY KNOWLEDGE AND BELIEF.
 PETER J. SEGARD P.S.
 OHIO PROFESSIONAL SURVEYOR NO. 7883
 DATE: 7-26-2019

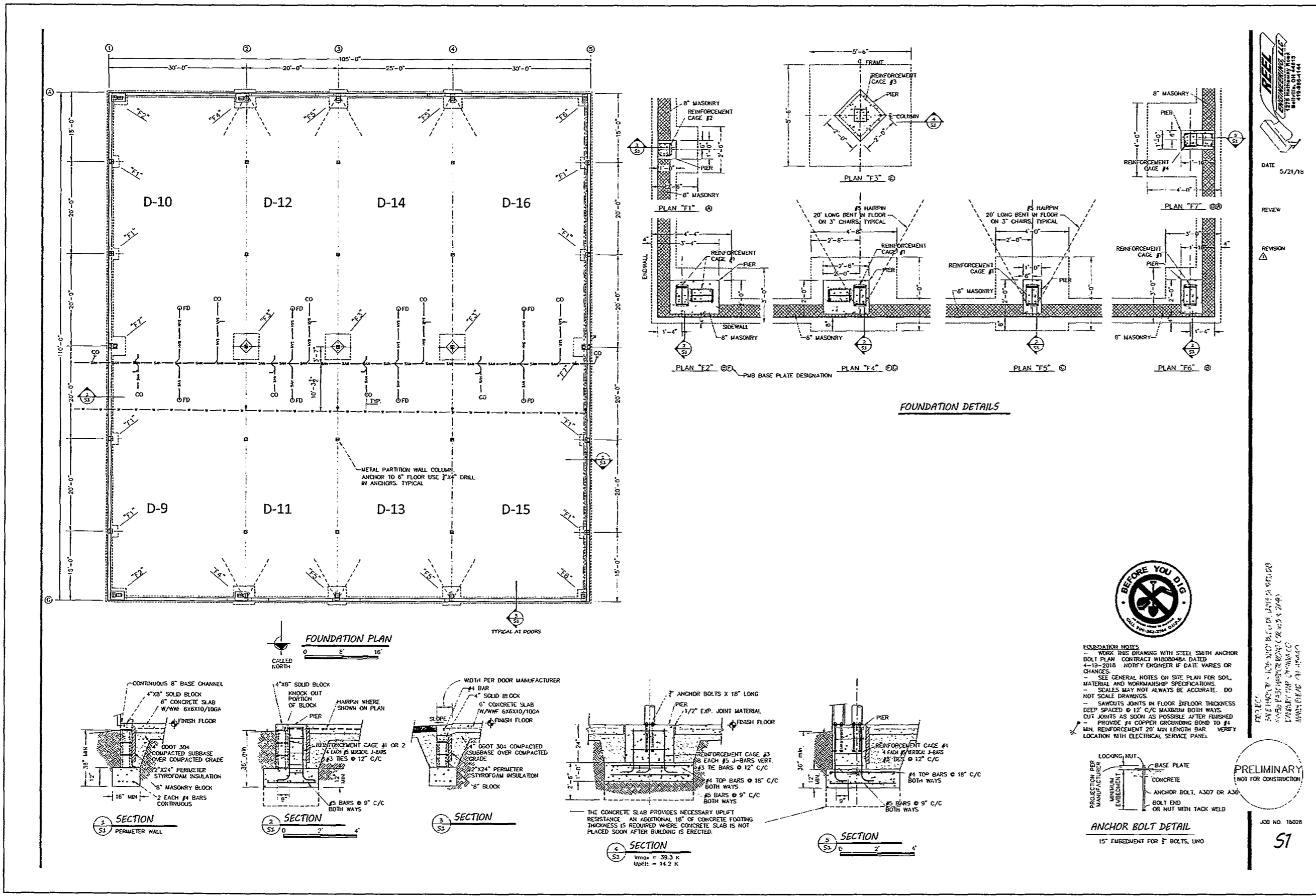
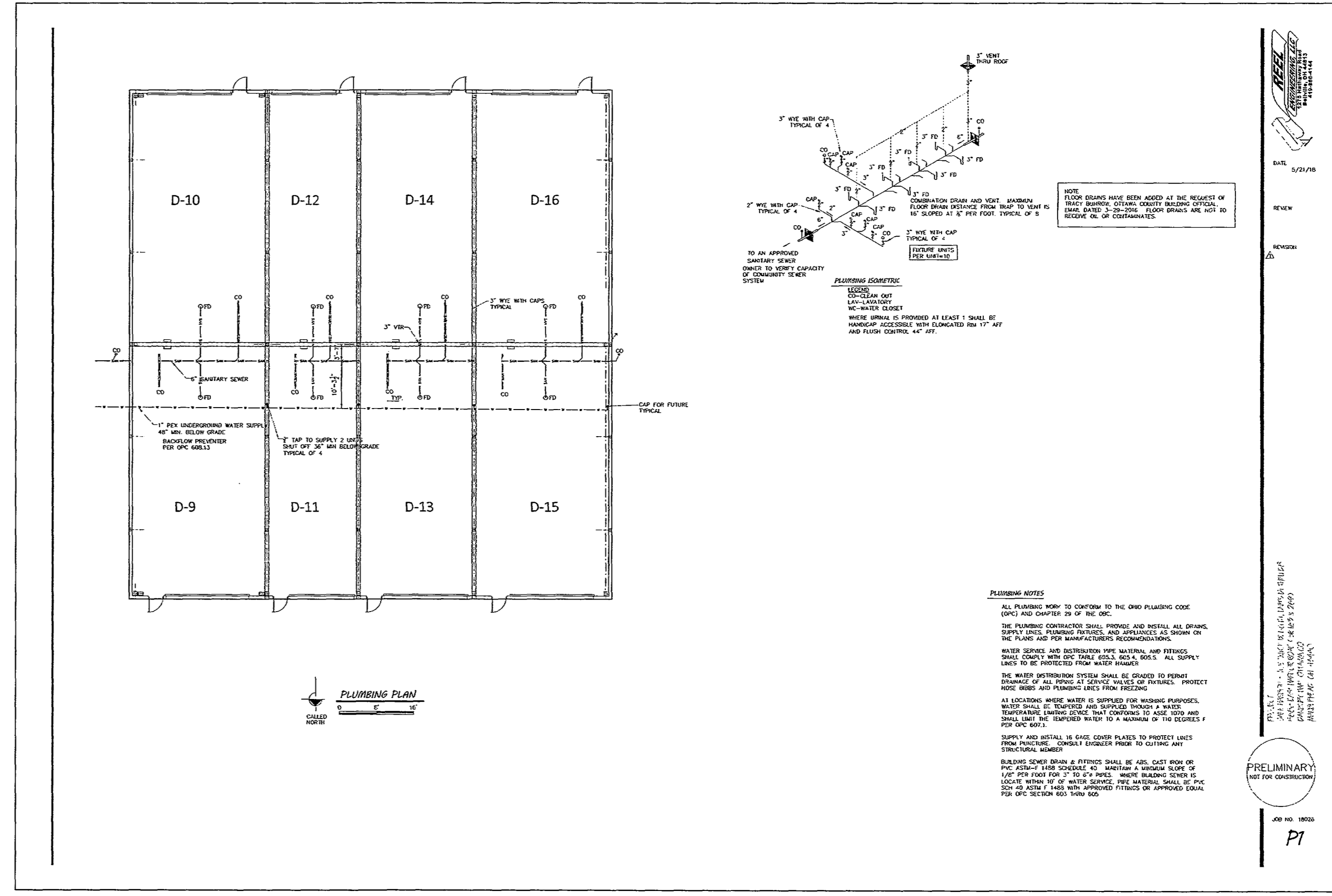
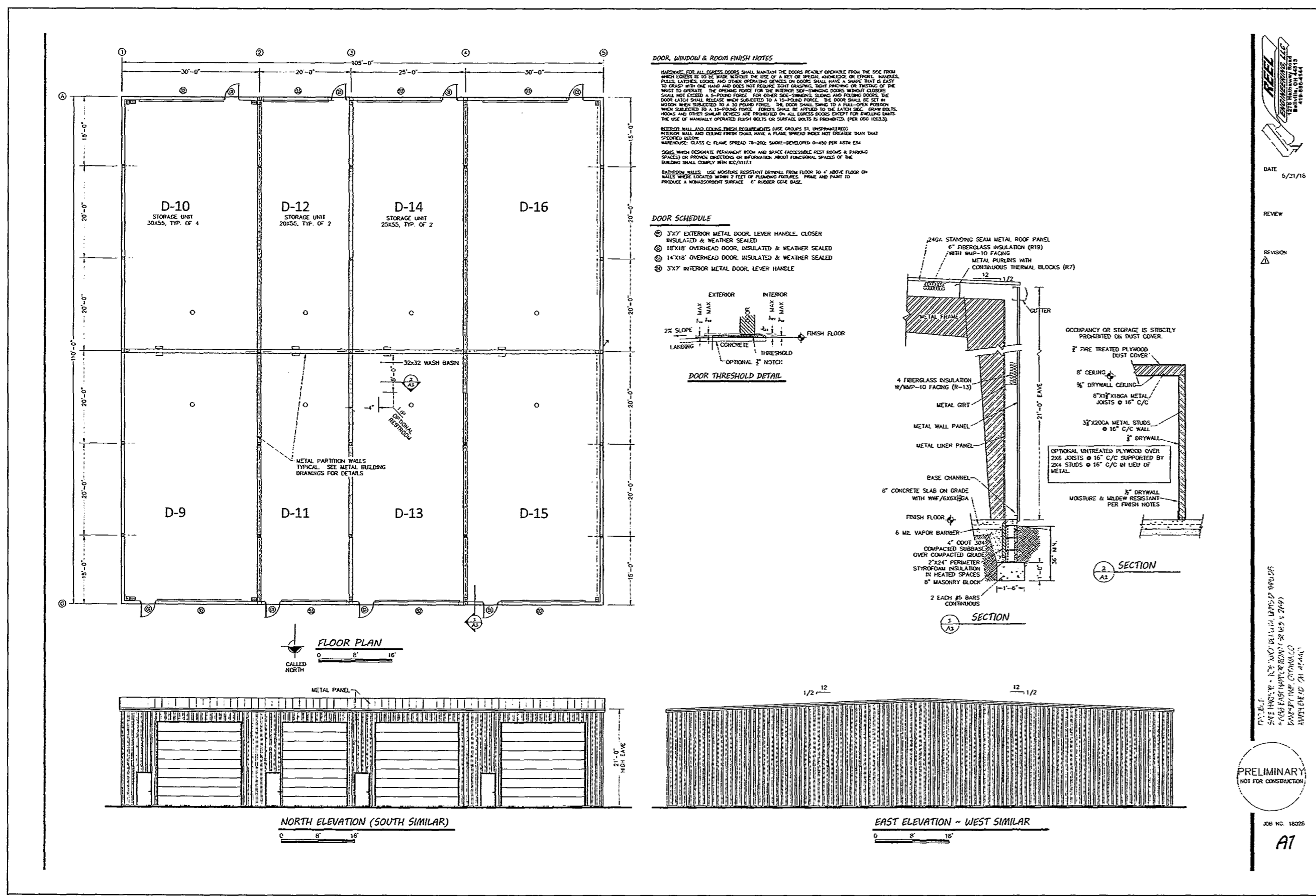


NO	REVISION	DATE
9		
8		
7		
6		
5		
4		
3		
2		
1	XXX	



SAFE HARBOR STORAGE CONDOMINIUM ELEVENTH AMENDMENT
 LOCATED IN PART OF LOT 03, SECTION 04, DANBURY TOWNSHIP, OTTAWA COUNTY, OHIO.

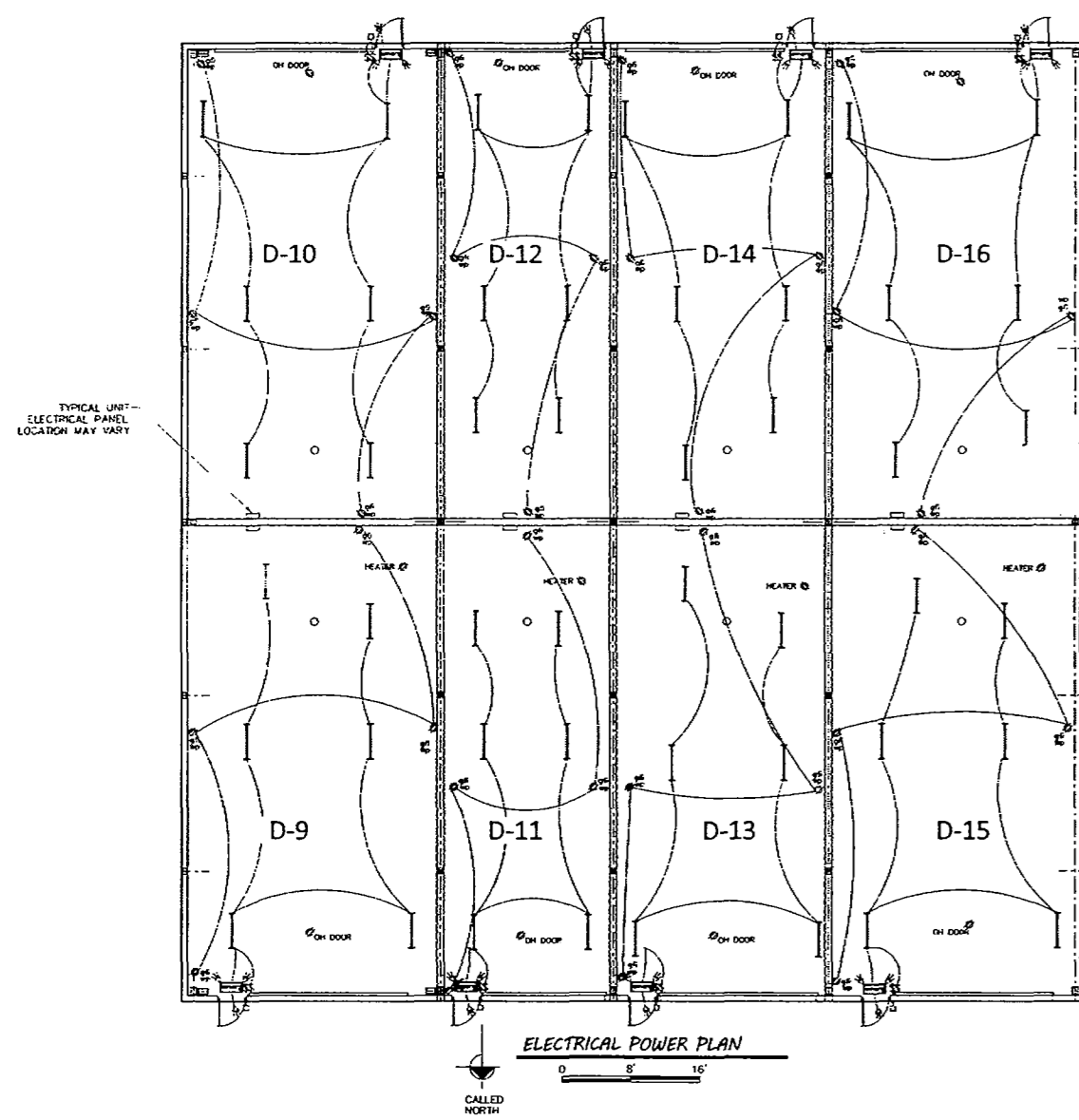
FILE: SH EIGHTH
 JOB NO.: 15080
 DRAWN BY: KEY
 ISSUED: 7/25/2019



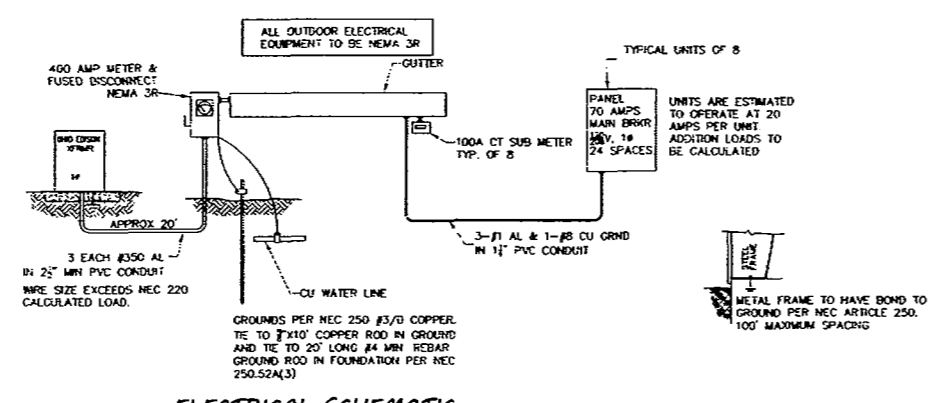
STATE OF OHIO
REGISTERED PROFESSIONAL ENGINEER
JOSHUA J. O'NEIL
69263
DATE: 7-26-2019
DATE: 7-26-2019
DATE: 7-26-2019

SAFE HARBOR STORAGE
CONDOMINIUM
ELEVENTH AMENDMENT
LOCATED IN PART OF LOT 03, SECTION 04, DANBURY
TOWNSHIP, OTTAWA COUNTY, OHIO.

PLOTTED: Jul 25, 2019 - 1:40pm
DRAWING: M:\15080 (Safe Harbor Development - Safe Harbor Plaza Building Layout)\SURVEY\DWG\22x34 Safe Harbor Condominiums ELEVENTH Amendment.dwg - PAGE3



- ELECTRICAL NOTES**
- ALL ELECTRICAL WORK SHALL COMPLY WITH THE REQUIREMENTS OF CHAPTER 47 OAC AND THE NATIONAL ELECTRICAL CODE, 2017 EDITION APPROVED EDITION AND IS SUBJECT TO THE APPROVAL OF THE LOCAL AUTHORITY HAVING JURISDICTION.
 - ALL WIRING SHALL BE TYPE NM-B (NONMETALLIC) CABLE, UNLESS OTHERWISE SPECIFIED BY THE NATIONAL ELECTRICAL CODE, 2017 EDITION APPROVED EDITION AND IS SUBJECT TO THE APPROVAL OF THE LOCAL AUTHORITY HAVING JURISDICTION.
 - ALL WIRING IN RACE OR PVC CONDUIT, OPTIONAL, IS CABLE TRAY PERMITTED BY NEC.
 - RESISTANCE THERMAL BREAKING (RTTB) SHALL BE PROVIDED FOR TELEPHONE CABLES, OPTICAL FIBER CABLES AND CABLE TELEVISION SERVICES.
 - THE CLEARANCES REQUIRED PER NEC SECTION 110-26 SHALL BE MAINTAINED ABOUT THE ELECTRICAL EQUIPMENT.
 - BRANCH CIRCUIT CONDUCTORS SHALL HAVE AN AMPLITUDE OF NOT LESS THAN THE MINIMUM LOAD TO BE SERVED. IN ADDITION, CONDUCTORS SHALL BE PROVIDED WITH PROPERLY SIZED AND TYPE OF OVERCURRENT PROTECTION PER NEC SECTION 240-15(A) UNLESS OTHERWISE SPECIFIED BY THE NATIONAL ELECTRICAL CODE, 2017 EDITION APPROVED EDITION.
 - BRANCH CIRCUIT CONDUCTORS AND EQUIPMENT SHALL BE PROVIDED BY OVERCURRENT PROTECTIVE DEVICES HAVING A RATING OF NOT LESS THAN THE SPECIFIED IN SECTION 240-15(A) UNLESS OTHERWISE SPECIFIED BY THE NATIONAL ELECTRICAL CODE, 2017 EDITION APPROVED EDITION.
 - LOCATE DISCONNECTS WITHIN 3' OF EQUIPMENT.
- ELECTRICAL SYMBOLS**
- 1 SINGLE-POLE SWITCH, MOUNT AT 48" AFF
 - 2 GROUND-Fault INTERRUPTER (GFI) RECEPTACLE
 - 3 GROUND-Fault INTERRUPTER (GFI) RECEPTACLE WITH WATERPROOF COVER
 - 4 INDUSTRIAL FLUORESCENT LIGHT FIXTURE, 2 BULBS @ 54W 40"
 - 5 WITH REMOTE READING METER AHEAD OF SWITCHES
 - 6 METER OF DISCONNECT TO CONDUIT TO OMC SECTION 1008 AND DISCONNECT TO AN OVERCURRENT PROTECTIVE DEVICE (OCPD) FOR EXCESSIVE CURRENT PROTECTION FOR NOT LESS THAN 20 AMPERES. CASE OF PRIMARY POWER LOSS, THE SYSTEM SHALL BE CONNECTED TO AN EMERGENCY POWER SYSTEM PROVIDED FROM STORAGE BATTERIES.
 - 7 25 WALL FLUORESCENT LIGHT FIXTURE/20 CFM EXHAUST VENT TO THE OUTSIDE



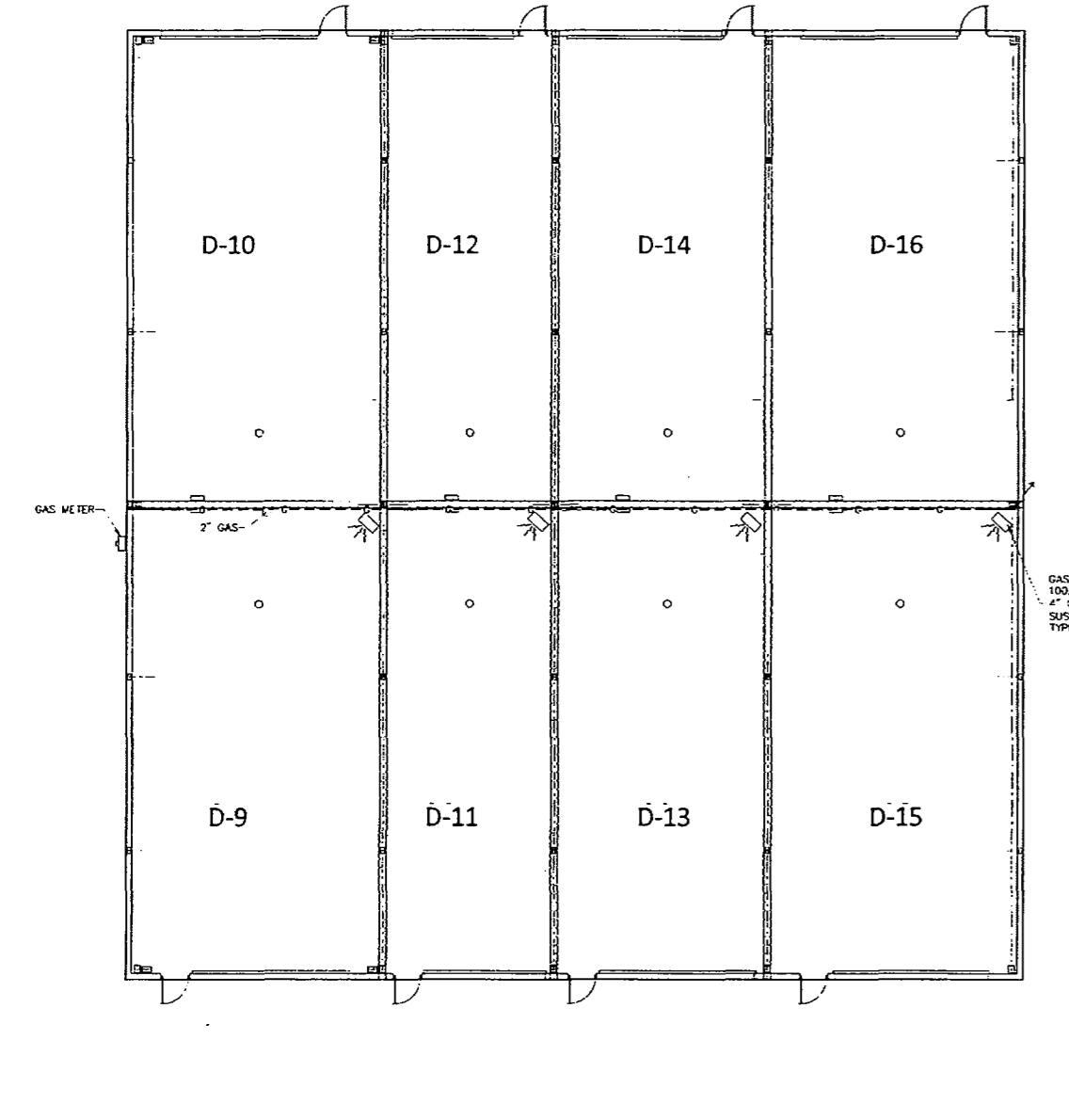
ELECTRICAL SCHEMATIC

UNITS ARE ESTIMATED TO OPERATE AT 20 AMP PER UNIT. LOADS TO BE CALCULATED PER NEC 220-10.

3 EACH 4000 AL 1/2" 27 AMP PVC CONDUIT PER UNIT. SEE EXISTING PER NEC 220-10(A)(1).

GROUNDING PER NEC 250-110(C) COPPER 10 1/2" PVC CONDUIT PER UNIT. SEE EXISTING PER NEC 250-110(A)(1).

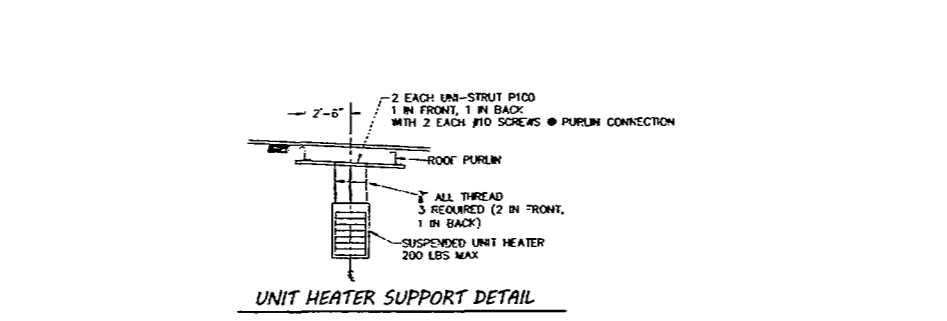
DATE: 6/27/18
 REVIEW:
 DESIGN:
 PRELIMINARY
 NOT FOR CONSTRUCTION
 JOB NO. 18028
 E1



- GAS CONNECTION DETAIL**
- APPROVED BLACK STANDARD PIPING, ASTM A53
 WITH APPROVED FITTINGS & CONNECTIONS
 ALL PIPING TO BE PROVED AND TESTED PER CODE
- HVAC NOTES & SYMBOLS**
- METHEANICAL EQUIPMENT SHALL BE INSTALLED IN ACCORDANCE WITH ITS MANUFACTURER'S RECOMMENDATIONS, SPECIFICATIONS AND GOOD ENGINEERING PRACTICES.
 - UNIT FOR REMOTE OPERATING PER NEC M-503.1.2. THE BURNING SHALL NOT BE OPERATED WITHIN THE BURNING AREA UNLESS NECESSARY TO MAINTAIN THE UNIT IN AND OUT OF THE BURNING.
 - ELECTRIC BASEBOARD HEATER, 250 WATT PER FOOT
 - 25 WALL FLUORESCENT LIGHT FIXTURE/20 CFM EXHAUST VENT TO THE OUTSIDE

NATURAL VENTILATION PER OMC 402

UNIT	AREA TO BE VENTILATED AREA	NUMBER
D-9	2100	145
D-10	2100	145
D-11	2100	145
D-12	2100	145
D-13	2100	145
D-14	2100	145
D-15	2100	145
D-16	2100	145

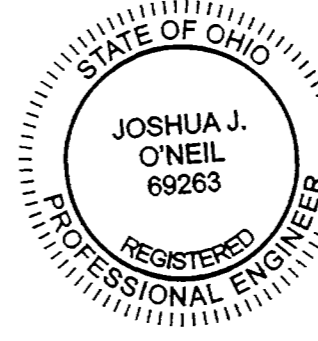


DATE: 6/27/18
 REVIEW:
 DESIGN:
 PRELIMINARY
 NOT FOR CONSTRUCTION
 JOB NO. 18028
 M1

PLOTTED: Jul 25, 2019 - 1:41pm
 DRAWING: M:\15080 (Safe Harbor Development - Safe Harbor Plaza Building Layout)\SURVEY (Dwg) 22-34 Safe Harbor Condominiums ELEVENTH Amendment.dwg: PAGE 4

SAFE HARBOR STORAGE
 CONDOMINIUM
 ELEVENTH AMENDMENT

LOCATED IN PART OF LOT 03, SECTION 04, DANBURY
 TOWNSHIP, OTTAWA COUNTY, OHIO.



ENGINEER'S CERTIFICATION:
 I HEREBY DECLARE THAT THE DRAWING ACCURATELY SHOWS EACH BUILDING AS BUILT TO THE BEST OF MY KNOWLEDGE AND BELIEF.

Joshua J. O'Neil
 JOSHUA J. O'NEIL, P.E.
 OHIO PROFESSIONAL ENGINEER NO. 69263

7-26-2019
 DATE