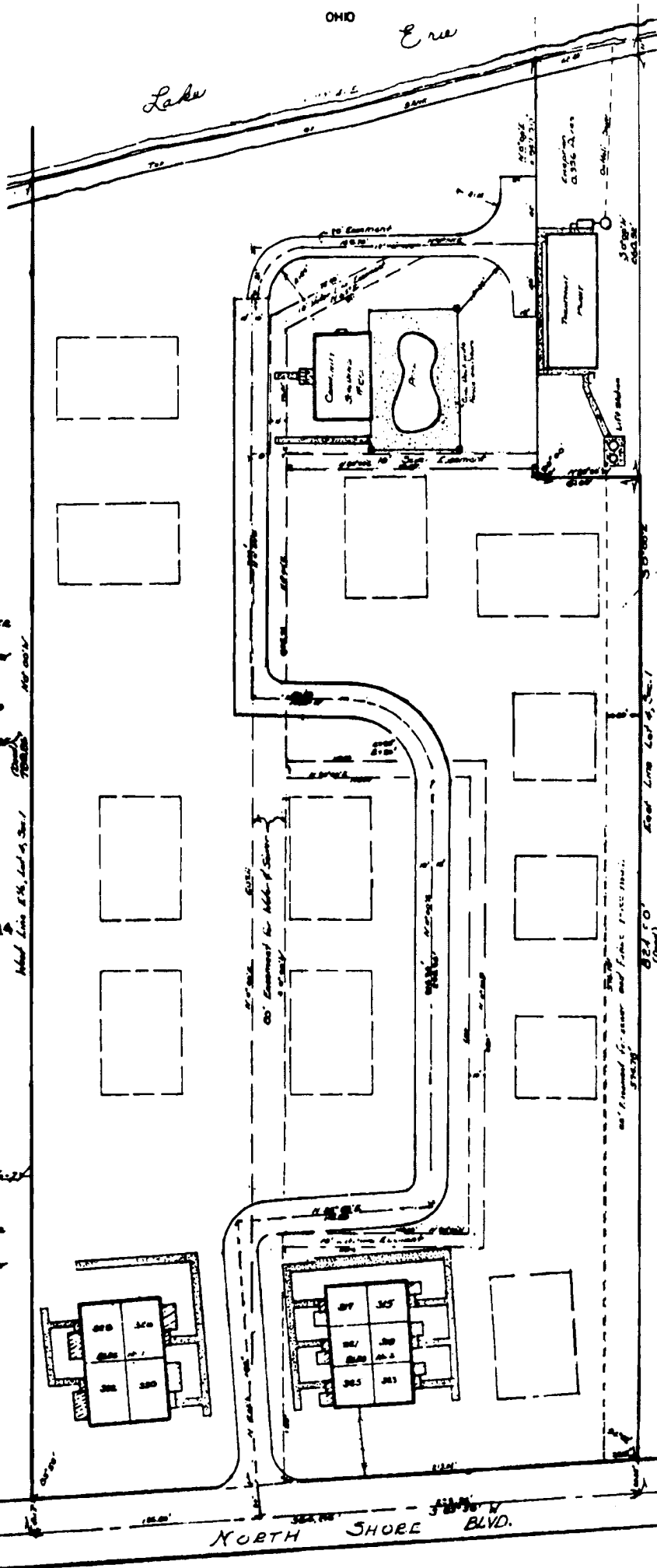


PLAT ONE OF
LAKE PINE ESTATES
A CONDOMINIUM IN LOT NO. 4, SECTION NO. 1
FIRELANDS SURVEY, DANBURY TOWNSHIP, OTTAWA CO.

OHIO

Ere

Lake



THIS IS OTTAWA COUNTY RECORDS
OF CUYAHOGA, OHIO
INDEXED FOR RECORDS THE 28th DAY
OF FEBRUARY, 1972, AT 10:00 AM
BY THE CLERK OF SAID COUNTY
RECORDS AT CUYAHOGA, OHIO.
[Signature]
FEB 28 1972

APPROVED AS TO ACCURACY
OF DIMENSIONS
[Signature]
FEB 28 1972
COUNTY ENGINEER

MADE BY OTTAWA COUNTY
DEPT. OF ENGINEERING
[Signature]
FEB 28 1972
COUNTY ENGINEER

THIS IS OTTAWA COUNTY RECORDS
OF CUYAHOGA, OHIO
INDEXED FOR RECORDS THE 28th DAY
OF FEBRUARY, 1972, AT 10:00 AM
BY THE CLERK OF SAID COUNTY
RECORDS AT CUYAHOGA, OHIO.
[Signature]
FEB 28 1972

I have verified that the foregoing plat
accurately shows the structures and
property lines in the condominium
lot, as built.
Date: 2-18-72
[Signature]
City Engineer No. 3810

- LEGEND
- UNITED County Area
 - UNITS
 - EASEMENT
 - PAVED
 - ADDITIONAL STRUCTURE

