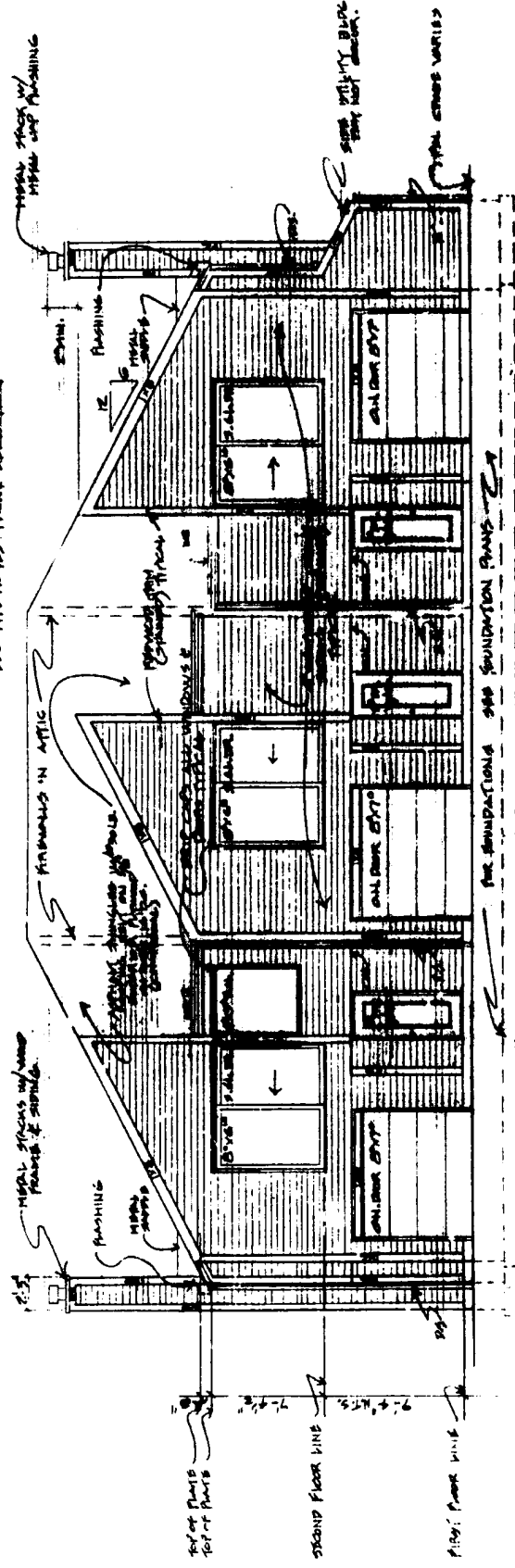


RIGHT SIDE ELEVATION 1/4" = 1'-0"
SEE THE NOTES ABOUT REVISIONS



FRONT ELEVATION 1/4" = 1'-0"
SEE THE NOTES ABOUT REVISIONS



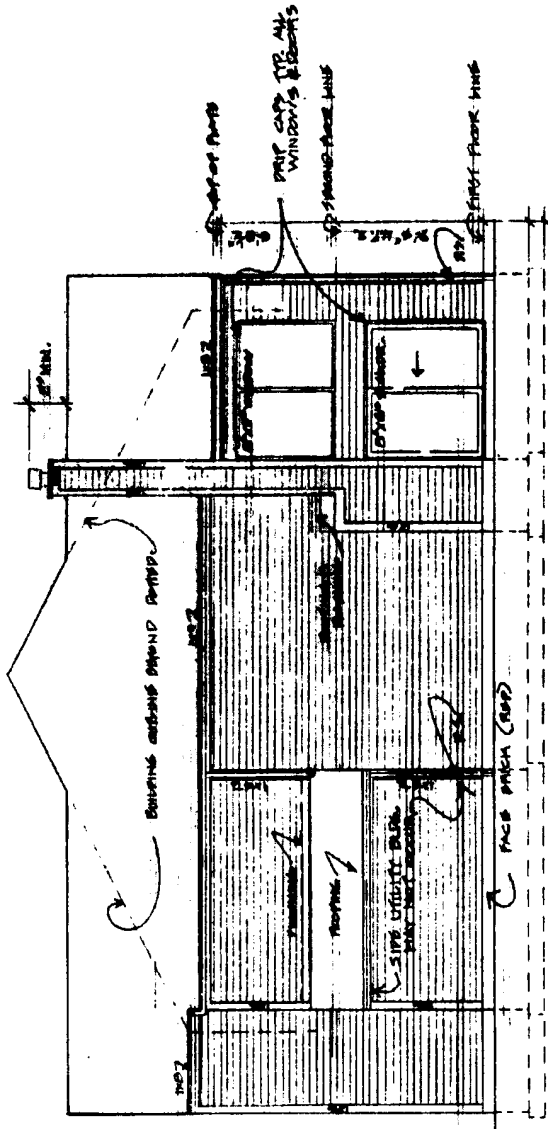
BOARD SET OF DRAWINGS
ELEVATIONS UNITS C.B.C. 1/4" = 1'-0"

BLUE WATER CONDOMINIUMS
2225 WOODBRIDGE BLVD. LAKESIDE, OHIO 44130

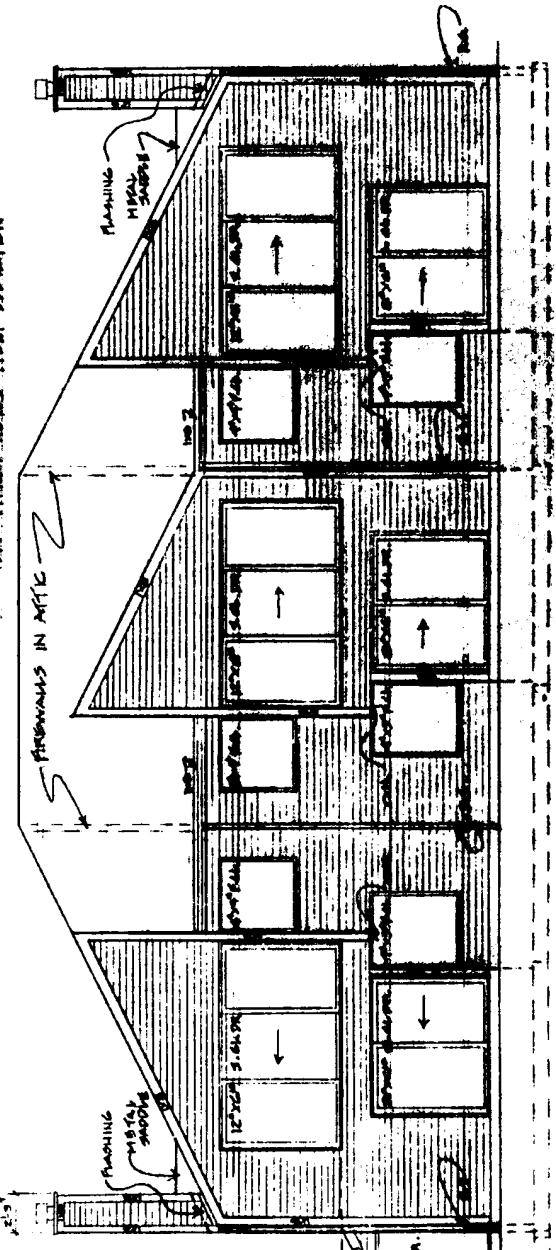
ARCHITECT: FREDERICK EBERHARD
11001 LORAIN ROAD, PAINESVILLE, OHIO 44130
6-29-87

33,994
Revised July 23, 1987 2:07 PM
Revised July 24, 1987
William R. Kahan
251-24 1/2 B - 2nd Fl. 00

WILLIAM R. KAHAN ARCHITECT
225 W. MAIN ST. COLUMBUS, OHIO 43215
614-291-1111



LEFT SIDE ELEVATION 1/4" = 1'-0"



REAR ELEVATION 1/4" = 1'-0"

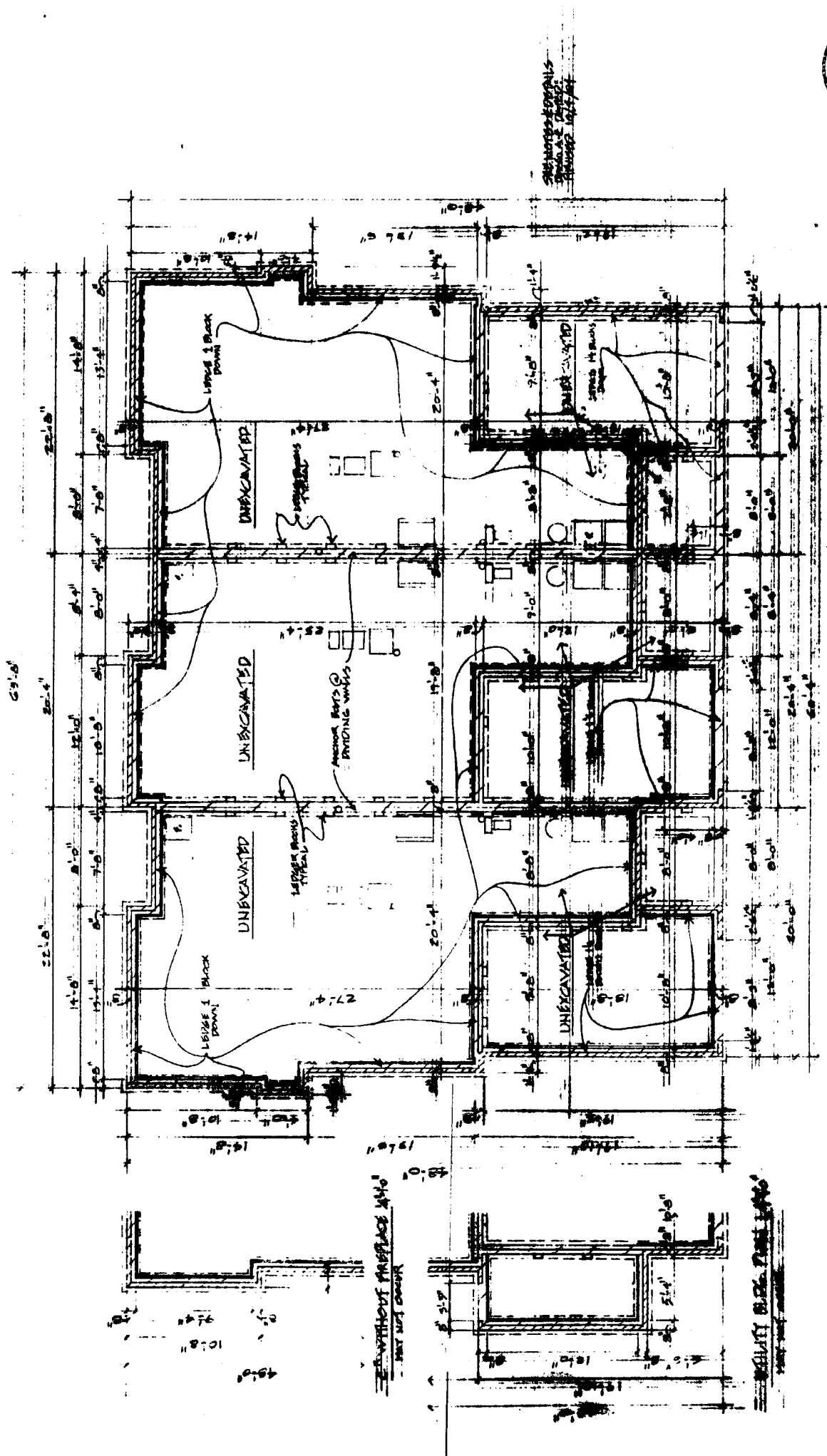
RECORD SET OF DRAWINGS
ELEVATIONS UNITS C.B.C. 1/4" = 1'-0"



BLUE WATER CONDOMINIUMS
 3825 NORTHSIDE BLVD. NORTHSIDE-MARBLEHEAD, OHIO 43140
 ARCHITECT: FREDERICK E. LEONARD
 77501 LORAIN ROAD, FAIRVIEW PARKS, OHIO 43122
 616-388-7322

32394
 Received July 23, 1987 2:07 PM
 Received July 21, 1987
 2:10 PM
 \$1.50 per set plus 36.00

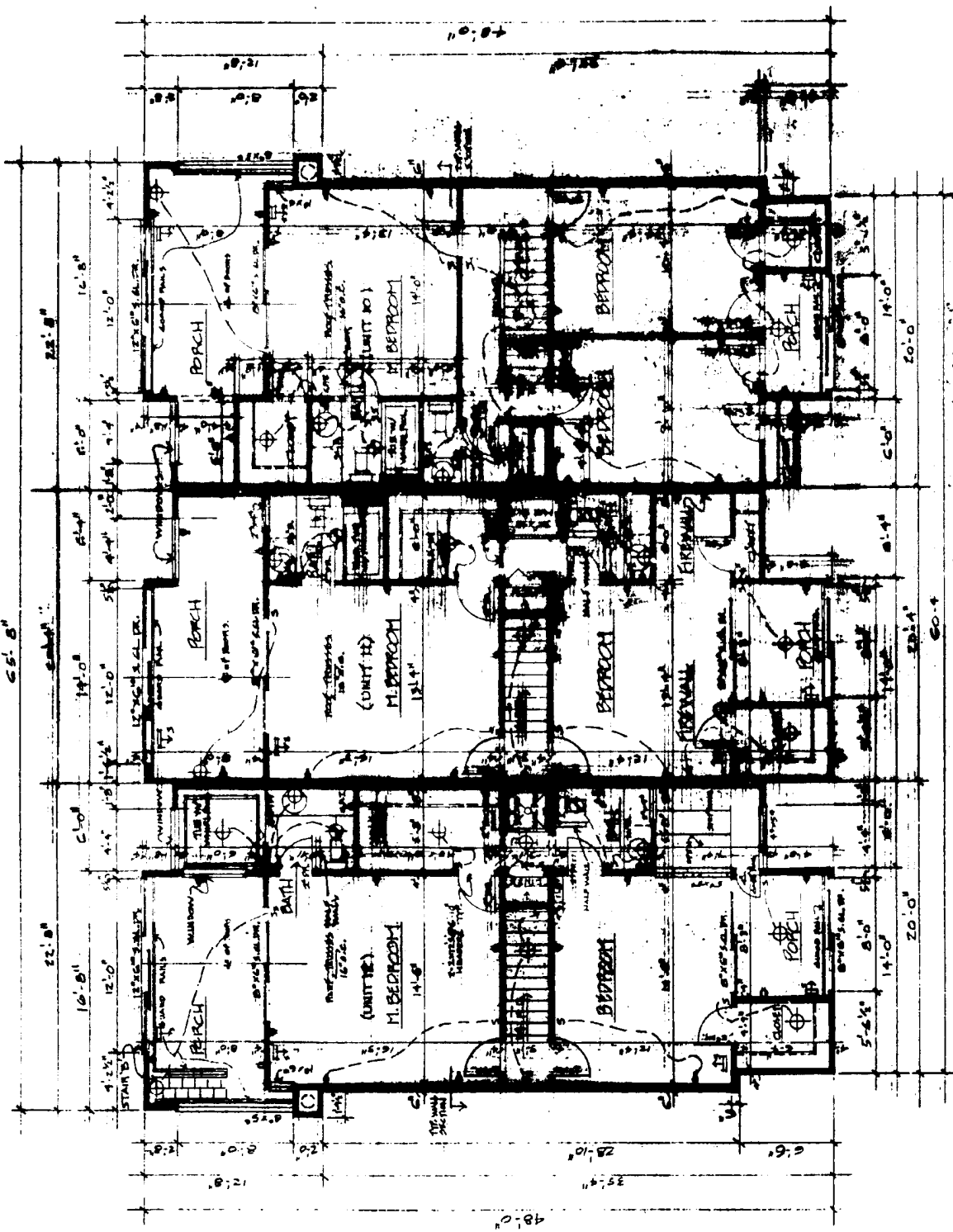
STATE OF OHIO
 ARCHITECT
 FREDERICK E. LEONARD
 77501 LORAIN ROAD
 FAIRVIEW PARKS, OHIO 43122



RESIDENTIAL PLANS AND SPEC. No. 10
 BLUE WATER CONDOMINIUMS
 2021 NORTH GARET BLVD. LAKESIDE-HARLEHEAD, OHIO 44140
 ARCHITECT: BRADRECK F. LEONARD
 15841 JORDAN BLVD. CLEVELAND, OHIO 44128
 216.228.2222

10.23.97
 Revised 10/23/97
 Revised 10/23/97
 2/2/98
 10/23/97

CAREER'S
 PROFESSIONAL ARCHITECTURE
 215 MARKET STREET, SUITE 200
 CLEVELAND, OHIO 44114
 (216) 521-1111



RECORD SET OF DRAWINGS
 SECOND FLOOR PLANS C.B.C. 8-10'

BLUE WATER CONDOMINIUMS
 805 SOUTH SHORE BLVD. LAKEWOOD, MICHIGAN 48040
 ARCHITECT: SPENCER, FLEMING & ASSOCIATES
 PROJECT NO. 805-200-112



3-22-88
 Revised 3-22-88, 3-22-88, 3-22-88
 3-22-88, 3-22-88, 3-22-88
 3-22-88, 3-22-88, 3-22-88

GARBER S.
 ARCHITECT
 11111 W. 11TH AVE., SUITE 100
 GARDEN CITY, OHIO 44130
 (216) 326-1111