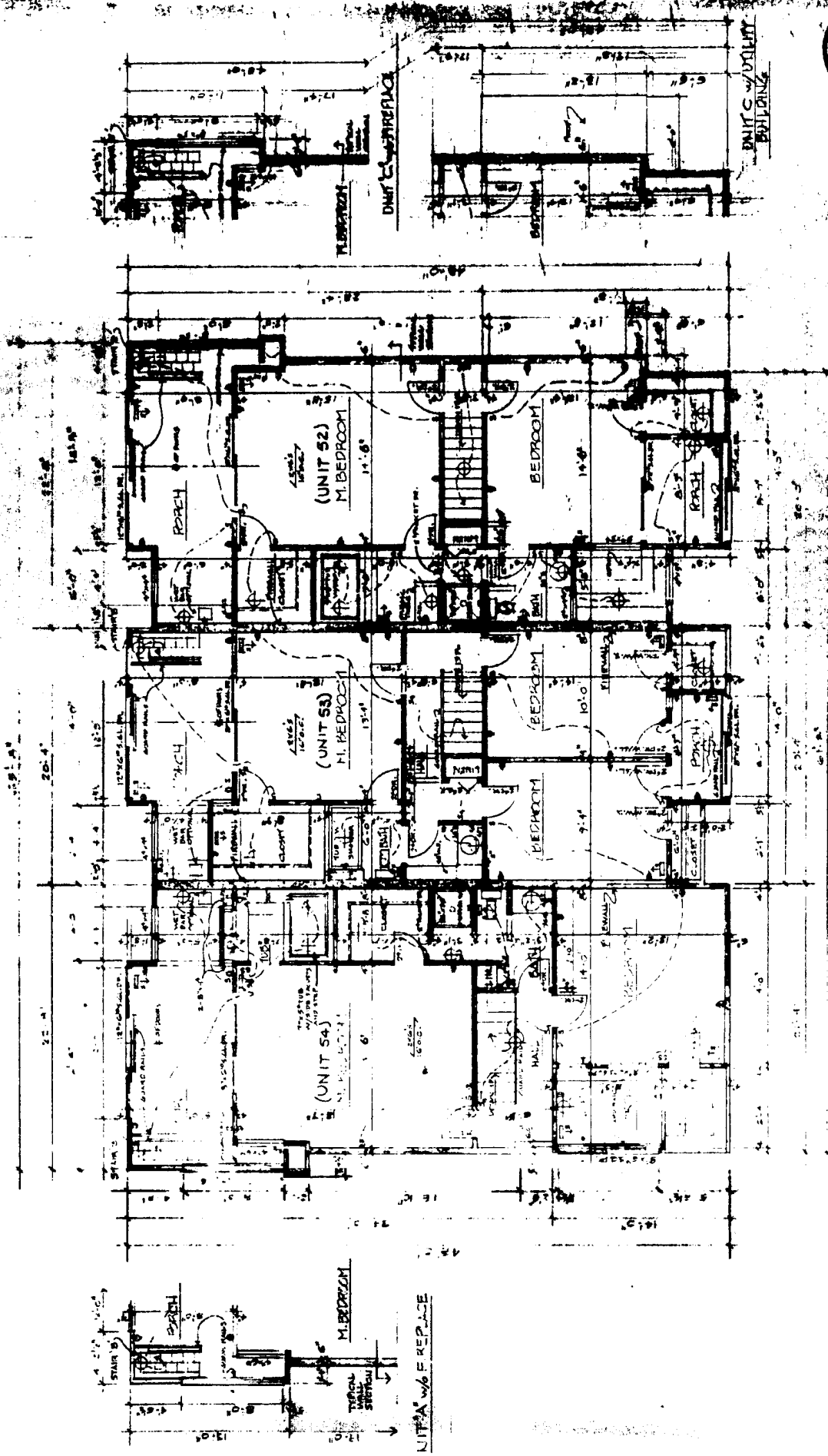


GARBER S
 ARCHITECTS
 75 S. SANDY CREEK ROAD
 COLUMBUS, OHIO 43224
 TEL: 614-261-1111

Vol. 22 3-A



SECOND FLOOR PLANS A.B.C. 1/10'

BLUE WATER CONDOMINIUMS

BRISTOL TOWNSHIP, OHIO 43004
 ARCHITECT: GARBER S. LEGARD
 13301 LORAIN ROAD, FAIRVIEW PARK, OHIO 43024
 TEL: 614-596-1111

NO. 20355

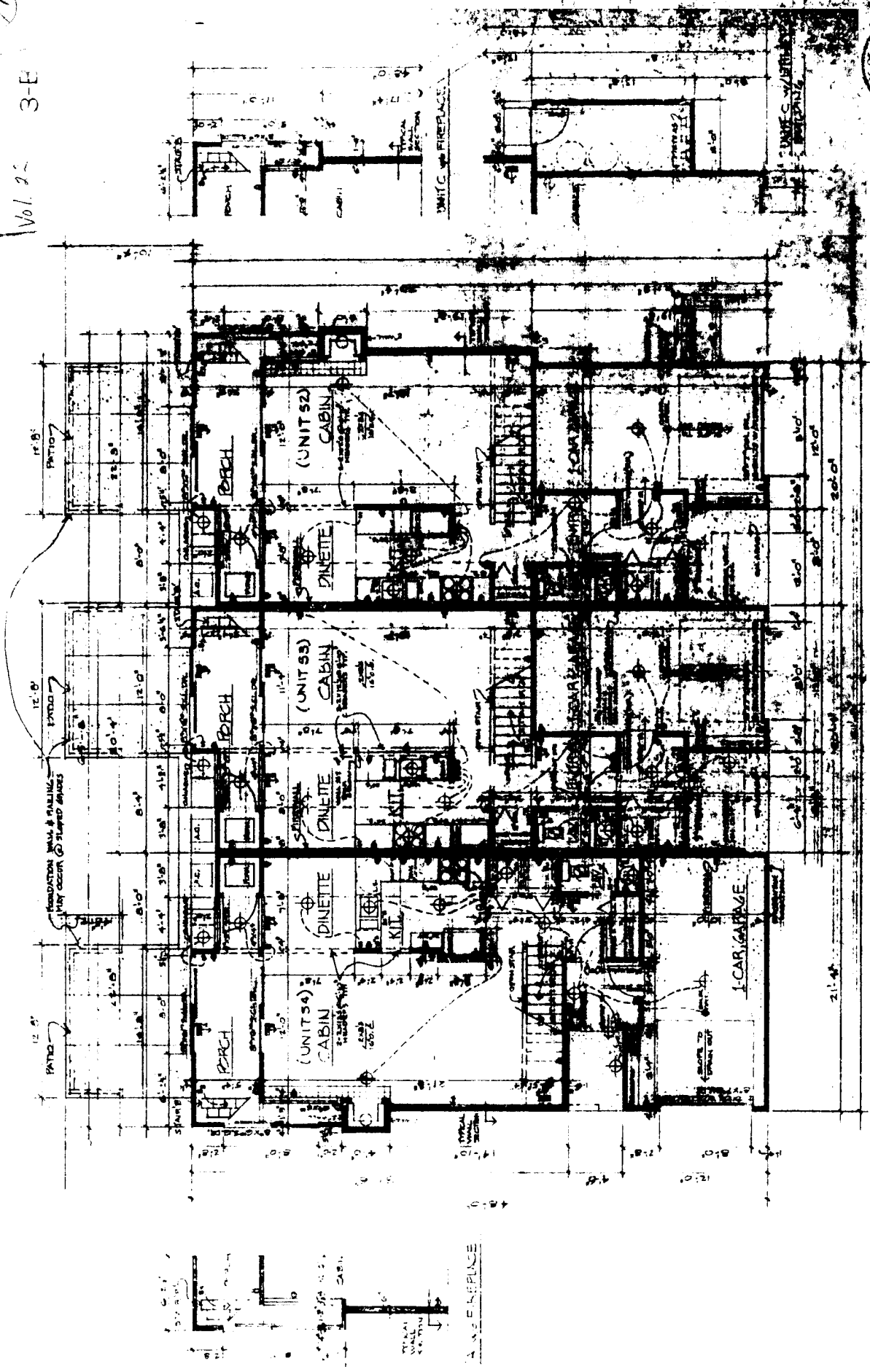
Prepared: August 14, 1976 Time: 1:00 P.M.

Revised: August 15, 1976

Vol. 22, No. 3-A Fee: \$34.00

3/7

Vol. 22 3-E



FIRST FLOOR PLANS A.B.C. AND

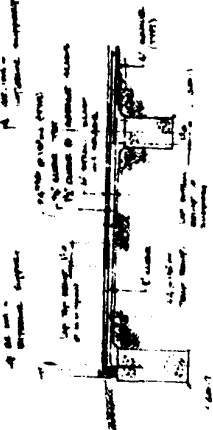
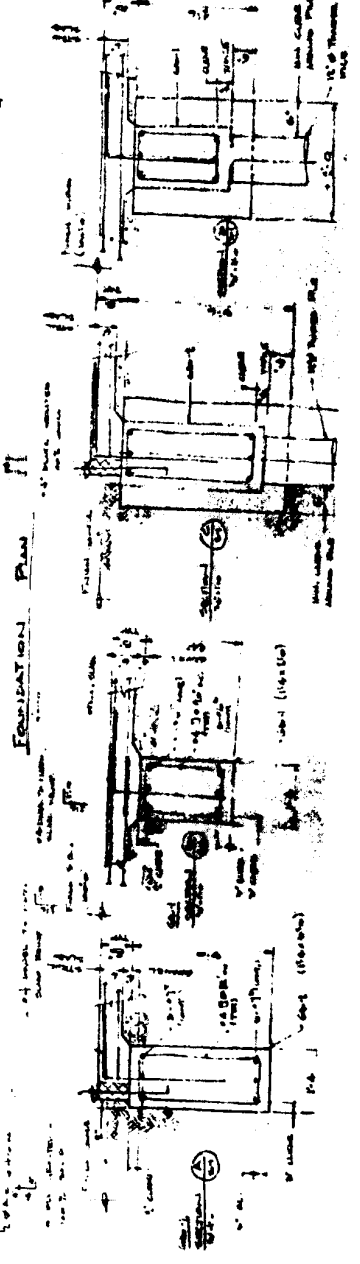
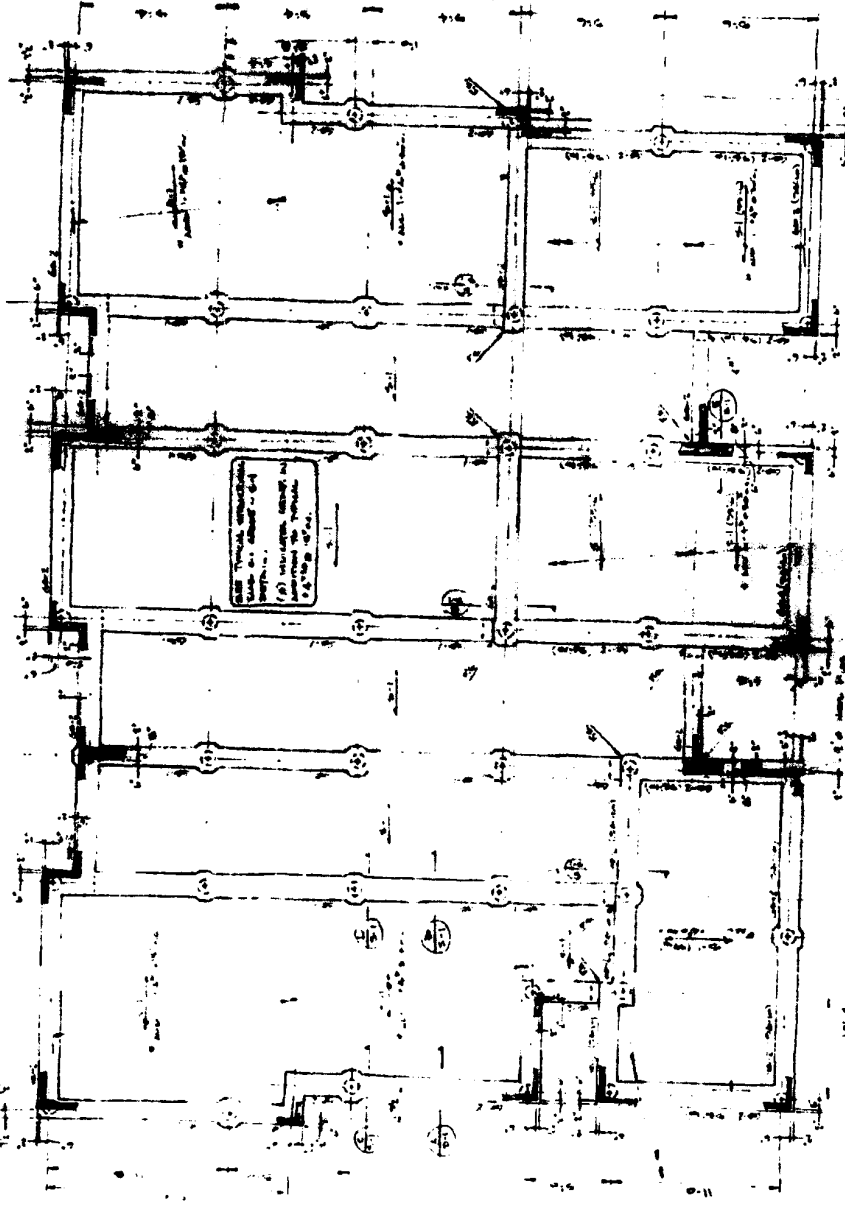
BLUE WATER CONDOMINIUMS
 3835 NORTHSIDE BLVD. LANSING - HARBORWOOD, OHIO 43140
 ARCHITECT: FREDERICK E. LEONARD
 1931 LORAIN ROAD, PAINESVILLE, OHIO 44130
 1-216-336-1122

23883
 Received August 14, 1974. Fees: \$500.00
 Received August 15, 1974.
 \$4,495.00. Fees: \$300.00.
 William S. Haines, Recorder

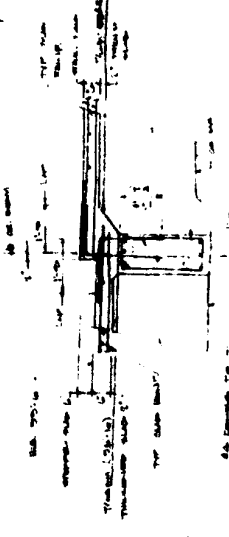
RECORDED
 1974 AUG 15 10:00 AM
 1931 LORAIN ROAD
 PAINESVILLE, OHIO 44130
 WILLIAM S. HAINES
 RECORDER

Vol. 22 3-C 47

SEE CONSTRUCTION AND FOUNDATION



TYPICAL STRUCTURAL SLAB ON GRADE - S-1



TYPICAL CENTRAL COLUMN

NOTES:

1. REINFORCEMENT SHALL BE 30 TENSILE AND PILES WELDED TO REMAIN AT TOP OF ROCK APPROX. 10" ABOVE FINISH GRADE.
2. PILES SHALL BE 12" DIAMETER AND 40'-0" LONG (SEE SPEC.)
3. PILES SHALL BE DRIVEN TO 10' BELOW FINISH GRADE WITH MINIMUM ALLOWABLE COMPRESSIVE STRESS OF 1200 PSI.
4. PILES SHALL BE DRIVEN TO 10' BELOW FINISH GRADE WITH MINIMUM ALLOWABLE COMPRESSIVE STRESS OF 1200 PSI.
5. PILES SHALL BE DRIVEN TO 10' BELOW FINISH GRADE WITH MINIMUM ALLOWABLE COMPRESSIVE STRESS OF 1200 PSI.
6. PILES SHALL BE DRIVEN TO 10' BELOW FINISH GRADE WITH MINIMUM ALLOWABLE COMPRESSIVE STRESS OF 1200 PSI.
7. PILES SHALL BE DRIVEN TO 10' BELOW FINISH GRADE WITH MINIMUM ALLOWABLE COMPRESSIVE STRESS OF 1200 PSI.
8. PILES SHALL BE DRIVEN TO 10' BELOW FINISH GRADE WITH MINIMUM ALLOWABLE COMPRESSIVE STRESS OF 1200 PSI.
9. PILES SHALL BE DRIVEN TO 10' BELOW FINISH GRADE WITH MINIMUM ALLOWABLE COMPRESSIVE STRESS OF 1200 PSI.
10. PILES SHALL BE DRIVEN TO 10' BELOW FINISH GRADE WITH MINIMUM ALLOWABLE COMPRESSIVE STRESS OF 1200 PSI.

REINFORCING BARS:

- 1. REINFORCING BARS SHALL BE 30 TENSILE AND PILES WELDED TO REMAIN AT TOP OF ROCK APPROX. 10" ABOVE FINISH GRADE.
- 2. PILES SHALL BE 12" DIAMETER AND 40'-0" LONG (SEE SPEC.)
- 3. PILES SHALL BE DRIVEN TO 10' BELOW FINISH GRADE WITH MINIMUM ALLOWABLE COMPRESSIVE STRESS OF 1200 PSI.
- 4. PILES SHALL BE DRIVEN TO 10' BELOW FINISH GRADE WITH MINIMUM ALLOWABLE COMPRESSIVE STRESS OF 1200 PSI.
- 5. PILES SHALL BE DRIVEN TO 10' BELOW FINISH GRADE WITH MINIMUM ALLOWABLE COMPRESSIVE STRESS OF 1200 PSI.
- 6. PILES SHALL BE DRIVEN TO 10' BELOW FINISH GRADE WITH MINIMUM ALLOWABLE COMPRESSIVE STRESS OF 1200 PSI.
- 7. PILES SHALL BE DRIVEN TO 10' BELOW FINISH GRADE WITH MINIMUM ALLOWABLE COMPRESSIVE STRESS OF 1200 PSI.
- 8. PILES SHALL BE DRIVEN TO 10' BELOW FINISH GRADE WITH MINIMUM ALLOWABLE COMPRESSIVE STRESS OF 1200 PSI.
- 9. PILES SHALL BE DRIVEN TO 10' BELOW FINISH GRADE WITH MINIMUM ALLOWABLE COMPRESSIVE STRESS OF 1200 PSI.
- 10. PILES SHALL BE DRIVEN TO 10' BELOW FINISH GRADE WITH MINIMUM ALLOWABLE COMPRESSIVE STRESS OF 1200 PSI.

REINFORCING BARS:

- 1. REINFORCING BARS SHALL BE 30 TENSILE AND PILES WELDED TO REMAIN AT TOP OF ROCK APPROX. 10" ABOVE FINISH GRADE.
- 2. PILES SHALL BE 12" DIAMETER AND 40'-0" LONG (SEE SPEC.)
- 3. PILES SHALL BE DRIVEN TO 10' BELOW FINISH GRADE WITH MINIMUM ALLOWABLE COMPRESSIVE STRESS OF 1200 PSI.
- 4. PILES SHALL BE DRIVEN TO 10' BELOW FINISH GRADE WITH MINIMUM ALLOWABLE COMPRESSIVE STRESS OF 1200 PSI.
- 5. PILES SHALL BE DRIVEN TO 10' BELOW FINISH GRADE WITH MINIMUM ALLOWABLE COMPRESSIVE STRESS OF 1200 PSI.
- 6. PILES SHALL BE DRIVEN TO 10' BELOW FINISH GRADE WITH MINIMUM ALLOWABLE COMPRESSIVE STRESS OF 1200 PSI.
- 7. PILES SHALL BE DRIVEN TO 10' BELOW FINISH GRADE WITH MINIMUM ALLOWABLE COMPRESSIVE STRESS OF 1200 PSI.
- 8. PILES SHALL BE DRIVEN TO 10' BELOW FINISH GRADE WITH MINIMUM ALLOWABLE COMPRESSIVE STRESS OF 1200 PSI.
- 9. PILES SHALL BE DRIVEN TO 10' BELOW FINISH GRADE WITH MINIMUM ALLOWABLE COMPRESSIVE STRESS OF 1200 PSI.
- 10. PILES SHALL BE DRIVEN TO 10' BELOW FINISH GRADE WITH MINIMUM ALLOWABLE COMPRESSIVE STRESS OF 1200 PSI.



PAUL MATHE CONSULTING ENGINEER
 1000 LEXINGTON AVENUE
 NEW YORK 17, N.Y.

23355
 Received: August 19, 1934. Time: 1:50 P.M.
 Received: August 19, 1934.
 Mr. J. J. ...
 ...

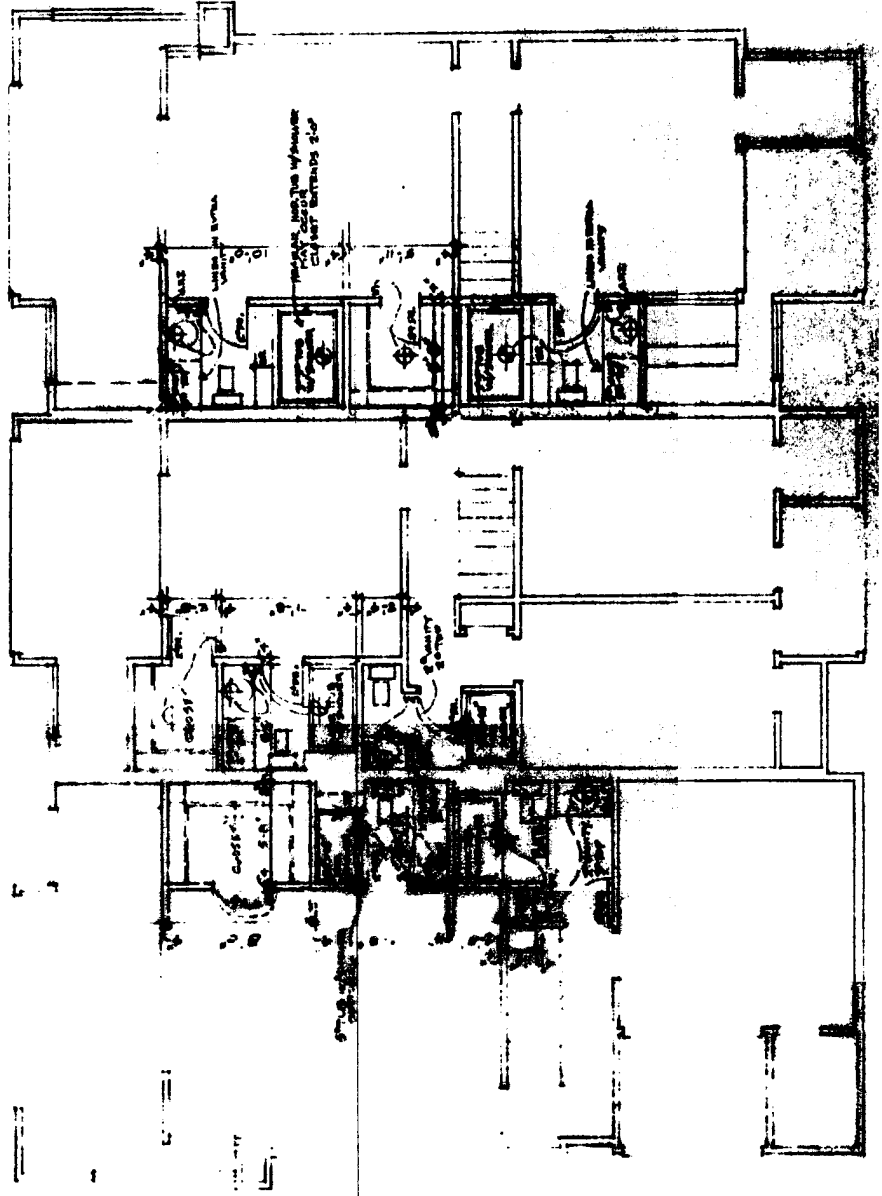
30

30

Vol. 22

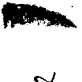
30303
 THURSDAY: August 14, 1974. Time: 1:30 P.M.
 DRAWING: 30303
 161 22 N. 23. Fee: \$25.00
 William H. Young, Designer

GARBERS
 ARCHITECTS
 215 N. 1st St.
 Minneapolis, Minn. 55401

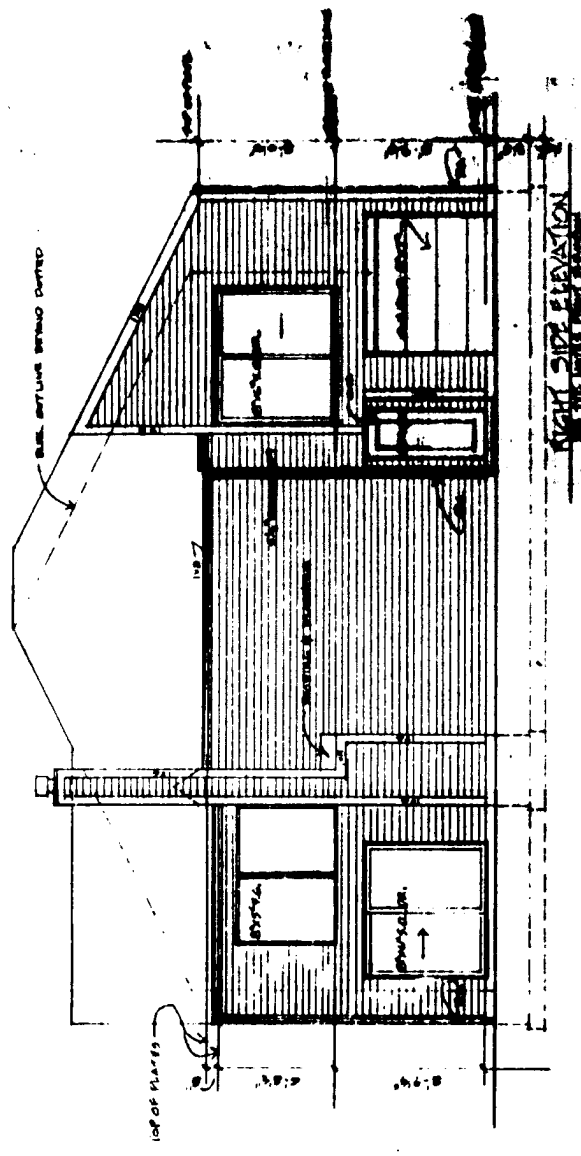
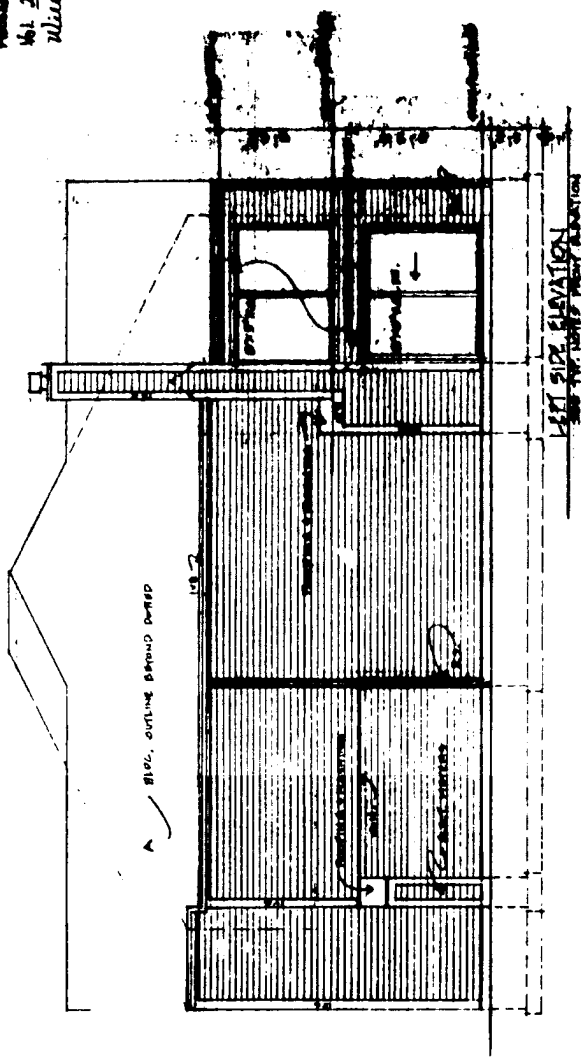


DOUBLE BATHS @ SECOND FLOOR BLUE WATER CONDOMINIUMS A-1000
 ARCHITECT: WILLIAM H. YOUNG

ARCHITECTURAL DRAWING
 WALTER GARDNER & ASSOCIATES
 27 S. WASHINGTON ST., CLEVELAND, OHIO 44113
 PHONE (216) 521-1100

Vol. 22 3-E 

23355
 Received: August 14, 1986 Time: 1:50 PM.
 Drawn: August 15, 1986
 Vol. 22, Pt. 3-E Fee: \$34.00
 William R. Hayes, Designer

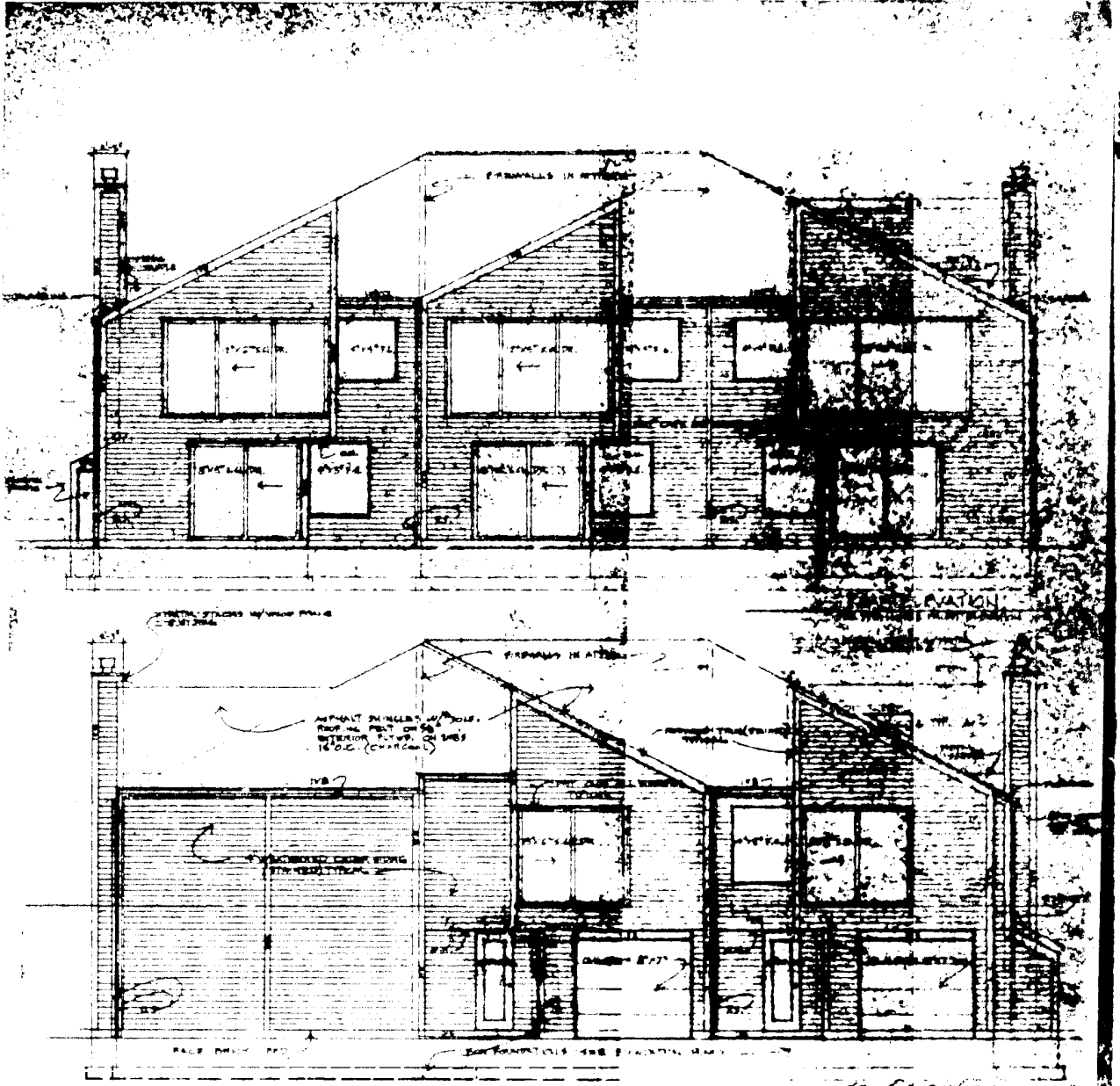


ELEVATIONS A.B.C. 1/1-d

BLUE WATER CONDOMINIUMS
 1000 NORTON ST. CLEVELAND, OHIO 43140

11/77

3-F



ELEVATION

BLUE WAT
 8908 NORTSHORE
 ARCHITECT FRED
 19301 LOPAIN ROAD
 1-216-43



23305
 Review: August 1976 Time 1:30 AM
 Review: August 1976
 Vol. 23 of 3-F for 3-14-80
 William R. Henry, Architect