

Roche Pointe Villas Condominium
 Plat Volume 51 pages 62 - 68
 Plat Volume 52 pages 24 - 29
 Plat Volume 56 pages 36 - 43

Delta=38°56'34"
 Arc=75.00'
 CB=50.98'
 CD=529°33'42"W
 ED=50.00'

Lot 52A
 Lot 53A
 Future Expansion

Lot 53A
 Future Expansion

Lot 54
 Harbor Bay Estates Plat 4
 Plat Volume 58 Pages 1 - 6

Harbor Bay Estates Plat 1
 Plat Volume 47 Pages 40 - 43

Harbor Bay Estates Plat 2
 Plat Volume 47 Pages 51 - 53

Harbor Bay Estates Plat 3
 Plat Volume 53
 Pages 69

Harbor Bay Estates Plat 4
 Plat Volume 58 Pages 1 - 6

Harbor Bay Estates Plat 5
 Plat Volume 64 Pages 17-18

Bay View Villa's LLC
 DR1637 P178

Bay View Villa's LLC
 DR1637 P178

Bay View Villa's LLC
 DR1637 P178

Bay View Villa's LLC
 DR1637 P178

Bay View Villa's LLC
 DR1637 P178

Bay View Villa's LLC
 DR1637 P178

Bay View Villa's LLC
 DR1637 P178

Bay View Villa's LLC
 DR1637 P178

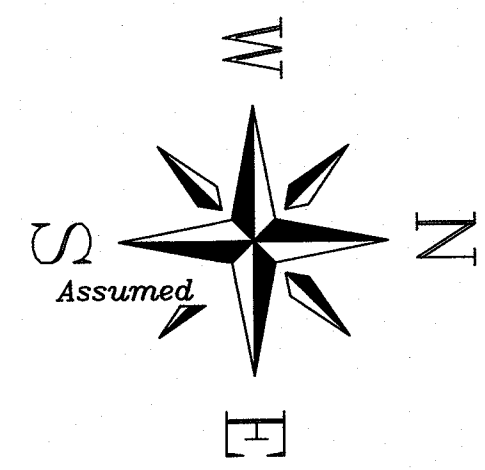
Certification
 I hereby certify that this drawing reflects the
 location of improvements and recorded easement
 to the best of my knowledge and belief.

Carl M. Feick P.S. 7035



Ottawa County Recorder
 # 20220321644
 Filed for Record this ___ Day of ___ 2022
 at
 Recorded this ___ Day of ___
 in Plat Book ___ pages
 Nathan J. Daniels

Graphic Scale: 1"=100'



Legend
 Centerline
 Setback line
 Edge of water top of bank 577.00
 easement line
 Limited Common Area
 1/2" Iron pin Found in concrete
 5/8" Iron pin set

Delta=47°32'45"
 Arc=230.00'
 CB=190.86'
 CD=189.43'
 ED=137.06'

Delta=47°32'45"
 Arc=230.00'
 CB=190.86'
 CD=189.43'

Delta=47°32'45"
 Arc=230.00'
 CB=190.86'
 CD=189.43'

Delta=47°32'45"
 Arc=230.00'
 CB=190.86'
 CD=189.43'

Delta=47°32'45"
 Arc=230.00'
 CB=190.86'
 CD=189.43'

Delta=47°32'45"
 Arc=230.00'
 CB=190.86'
 CD=189.43'

Delta=47°32'45"
 Arc=230.00'
 CB=190.86'
 CD=189.43'

Delta=47°32'45"
 Arc=230.00'
 CB=190.86'
 CD=189.43'

Delta=47°32'45"
 Arc=230.00'
 CB=190.86'
 CD=189.43'

Delta=47°32'45"
 Arc=230.00'
 CB=190.86'
 CD=189.43'

Delta=47°32'45"
 Arc=230.00'
 CB=190.86'
 CD=189.43'

Delta=47°32'45"
 Arc=230.00'
 CB=190.86'
 CD=189.43'

Delta=47°32'45"
 Arc=230.00'
 CB=190.86'
 CD=189.43'

Delta=47°32'45"
 Arc=230.00'
 CB=190.86'
 CD=189.43'

Delta=47°32'45"
 Arc=230.00'
 CB=190.86'
 CD=189.43'

Delta=47°32'45"
 Arc=230.00'
 CB=190.86'
 CD=189.43'

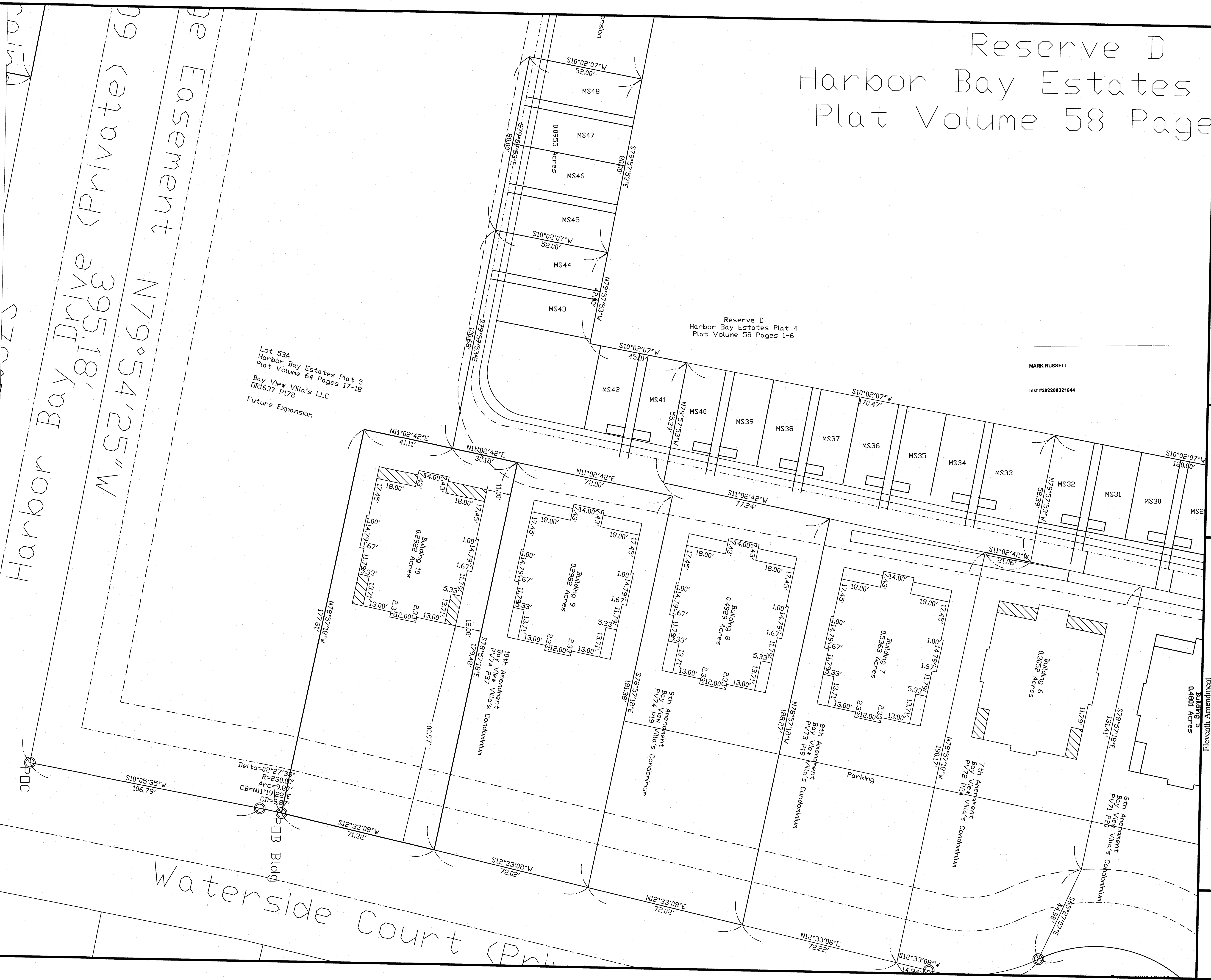
Carl M Feick P.E. P.S.
 712 Bardwell Road
 Castalia, Ohio 44824
 419-656-3016 CFeick@compuserve.com

Created 10/06/2022

Bay View Villas Condominium,
 Being part of lot 53A of Harbor Bay Estates Plat 5, PV 64 P 17 & 18
 Section 4 lot 21, Danbury Township, Ottawa County, Ohio
 Owner: Marblehead Estates & Yacht Club, Ltd, 118 W South Boundary, Perrysburg, Ohio 43551
 419-873-8052

20220321644 10/17/2022 01:15 PM
 Filed for Record in OTTAWA County, Ohio
 Nathan J. Daniels Rec Fees: \$145.20
 OR Vol 74 Pgs 56 - 57

Reserve D
Harbor Bay Estates
Plat Volume 58 Page



Lot 53A
Harbor Bay Estates Plat 5
Plat Volume 64 Pages 17-18
Bay View Villa's LLC
DR1637 P178
Future Expansion

Reserve D
Harbor Bay Estates Plat 4
Plat Volume 58 Pages 1-6

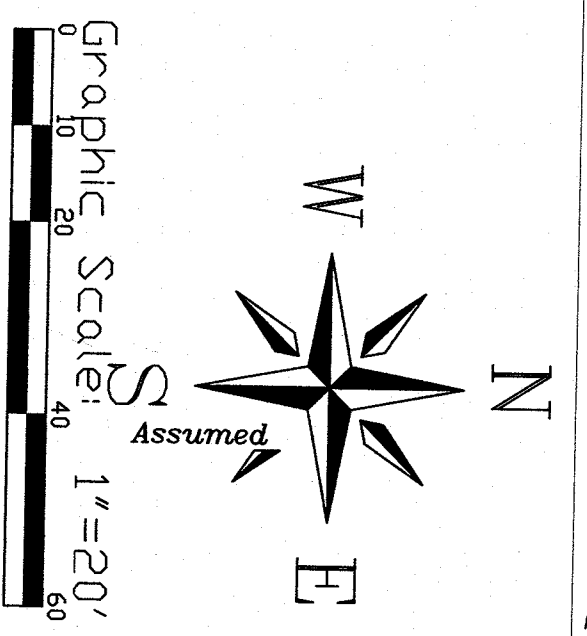
MARK RUSSELL
Inst #202200321644

Carl M Feick P.E. P.S.
712 Bardwell Road
Castalia, Ohio 44824
419-656-3016 CFeick@compuserve.com

Created 10/06/2022

Bay View Villas Condominium,
Eleventh Amendment
Building 5
0.4801 Acres
Being part of lot 53A of Harbor Bay Estates Plat 5, PV 64 P 17 & 18
Section 4 lot 21, Danbury Township, Ottawa County, Ohio
Owner: Marblehead Estates & Yacht Club, Ltd, 118 W South Boundary, Perrysburg, Ohio 43551
419-873-8052

2



Certification
I hereby certify that this drawing reflects the location of improvements and recorded easement to the best of my knowledge and belief.

Carl M. Feick P.S. 7035

