

SECOND AMENDMENT TO DECLARATION OF CONDOMINIUM
 BAR HARBOR RESERVE CONDOMINIUMS
 BEING A PART OF PARCELS 1 AND 2 OF LAND CONVEYED TO SCHAFFER MANAGEMENT COMPANY INC. BY DEED
 RECORDED IN VOLUME 871, PAGE 308 OF OTTAWA COUNTY OFFICIAL RECORDS
 LYING NORTHERLY OF SECTION 2, LOTS 14, 15, AND 16 FIRELANDS SURVEY
 NOW IN THE TOWNSHIP OF DANBURY - OTTAWA COUNTY - STATE OF OHIO
 DECEMBER, 2007
 SCALE 1 INCH = 30 FEET
 EXHIBIT A
 GRANTOR: SCHAFFER MANAGEMENT COMPANY INC.

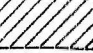
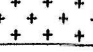
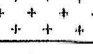
IN WITNESS WHEREOF, SCHAFFER MANAGEMENT COMPANY INC., AN OHIO
 CORPORATION, HAS CAUSED THIS INSTRUMENT TO BE SUBSCRIBED IN ITS NAME
 BY Donald W. Schaffer, AT
Florida, OHIO THIS 9th DAY OF January
2008
 BY Eric J. Eberhardt, Sr.

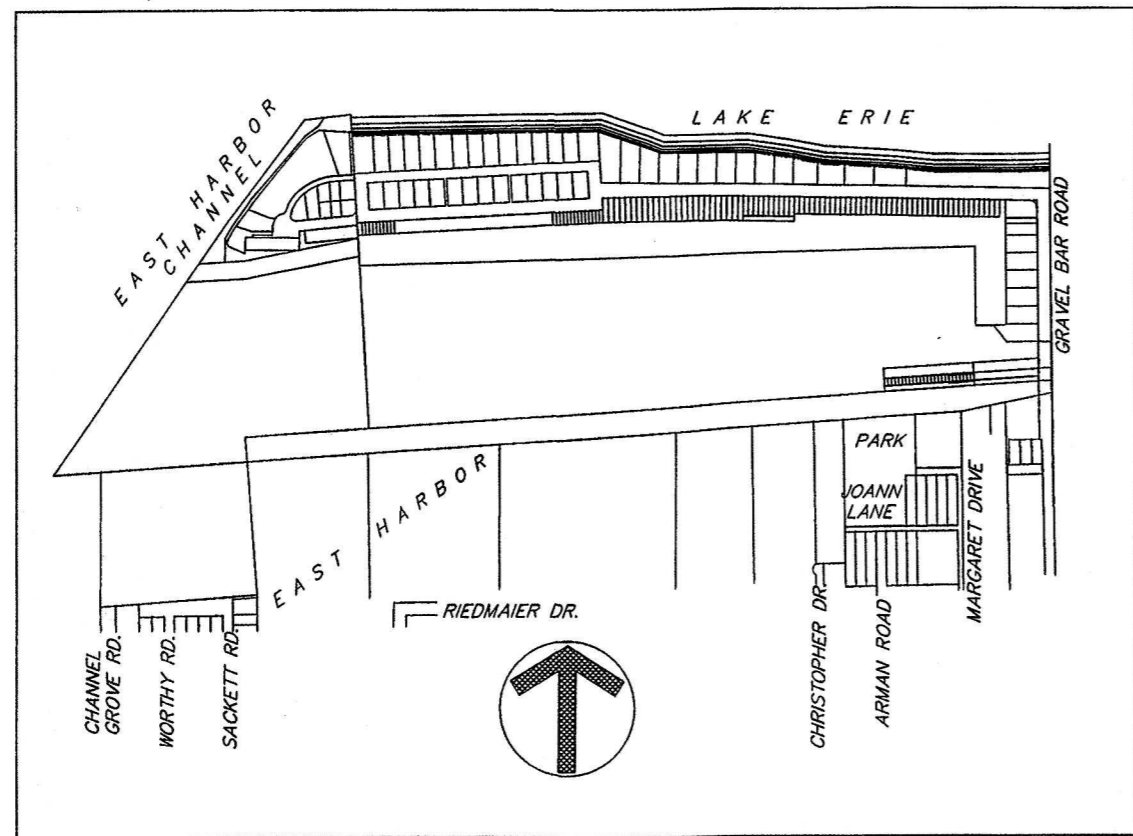
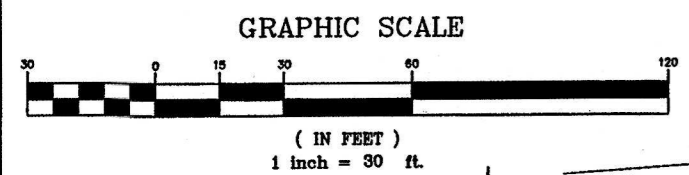
SIGNED AND ACKNOWLEDGED IN THE PRESENCE OF:
 WITNESS: _____
 WITNESS: _____
 STATE OF Florida
 COUNTY OF Collier

BEFORE ME, A NOTARY PUBLIC FOR SAID COUNTY AND STATE, PERSONALLY APPEARED
 THE ABOVE NAMED Donald W. Schaffer
 SCHAFFER MANAGEMENT COMPANY INC., WHO ACKNOWLEDGED
 THAT HE DID SIGN THE FOREGOING INSTRUMENT AND THAT THE SAME IS HIS
 VOLUNTARY ACT AND DEED PERSONALLY AND THE VOLUNTARY ACT AND DEED
 OF SCHAFFER MANAGEMENT COMPANY INC.

IN TESTIMONY WHEREOF, I HAVE HERETO SET MY HAND AND OFFICIAL SEAL
 AT Florida, OHIO THIS 9th DAY OF
January, 2008

NOTARY PUBLIC
Eric J. Eberhardt, Sr.
 Notary Public, State of FL
 Term Expires 6-20-11

-  LIMITED COMMON ELEMENTS (L.C.E.)
-  PROPOSED INGRESS/EGRESS EASEMENT
-  EXISTING INGRESS/EGRESS EASEMENT



VICINITY MAP
 SCALE 1"=500'

SURVEYOR'S CERTIFICATION

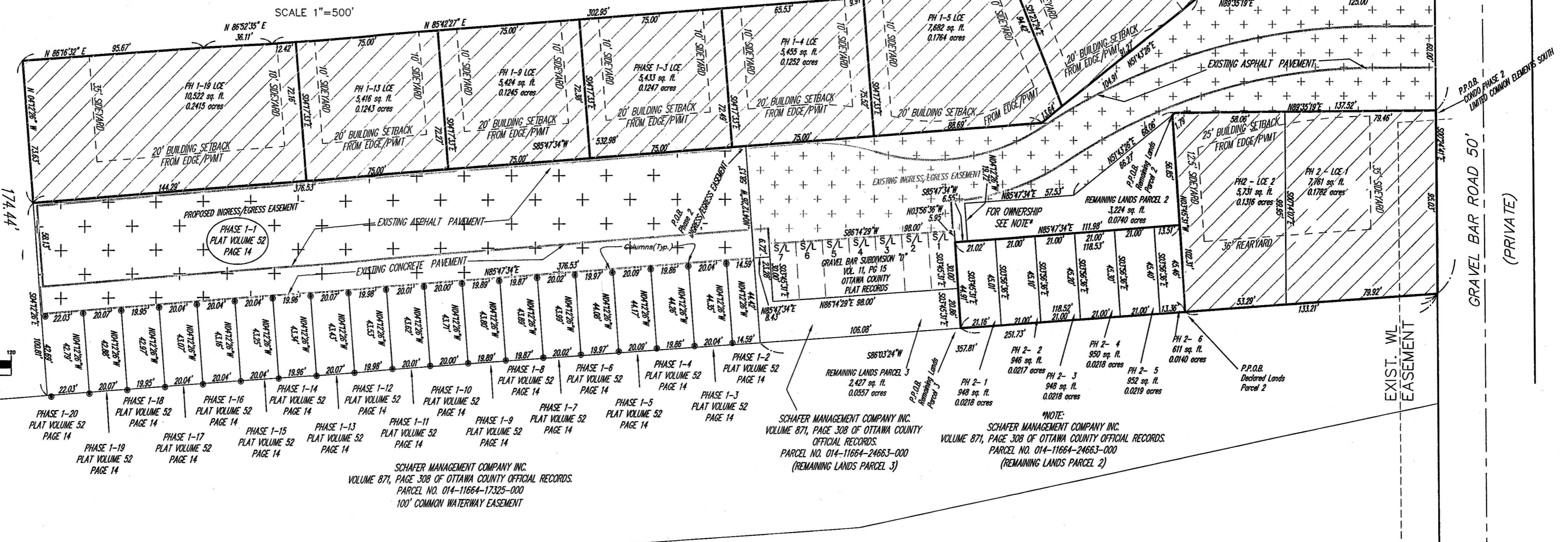
I HEREBY CERTIFY TO THE FOLLOWING: THAT THE LOCATIONS OF THE LIMITED COMMON AREAS SHOWN BY SOLID
 TRACK LINES AND DIMENSIONS, AND THE EXISTING ELEVATIONS OF THE STRUCTURES THEREIN ARE
 ACCURATELY SHOWN FROM A FIELD SURVEY MADE UNDER MY DIRECT SUPERVISION, AND WERE ACTUALLY
 CONSTRUCTED. COMMON AND LIMITED AREAS ARE SHOWN HEREON DEPICIT AREAS DESCRIBED IN THE DECLARATIONS
 AND BYLAWS OF THE BAR HARBOR RESERVE CONDOMINIUM ASSOCIATION, RECORDED IN
 VOLUME 1155, PAGE 501, OTTAWA COUNTY OFFICIAL RECORDS. THIS PLAT WAS PREPARED IN ACCORDANCE WITH
 THE PROVISIONS OF CHAPTER 5311-01 OF THE OHIO ADMINISTRATIVE CODE.
Michael P. Spellacy 1/26/08
 MICHAEL P. SPELLACY P.S. #0169



200800161495
 RECEIVED FOR RECORD 1-15-2008
 TIME 8:58 a.m. FEE \$138.60
 VOL 54 PG 19-20
Virginia M. Park, Recorder
 VIRGINIA PARK, RECORDER OTTAWA COUNTY, OHIO

SCHAFFER MANAGEMENT COMPANY INC.
 VOLUME 871, PAGE 308 OF OTTAWA COUNTY OFFICIAL RECORDS.
 PARCEL NO. 014-11664-24663-000
 (REMAINING LANDS PARCEL 1)
 REMAINING LANDS PARCEL 1
 1,339,949 sq. ft.
 30.7588 acres

BAR HARBOR PROPERTY OWNERS ASSOC.
 (VOLUME 364, PAGE 110 OTTAWA COUNTY
 OFFICIAL RECORDS)
 PARCEL NO. 014-11664-15802-000



SCHAFFER MANAGEMENT COMPANY INC.
 VOLUME 871, PAGE 308 OF OTTAWA COUNTY OFFICIAL RECORDS.
 PARCEL NO. 014-11664-17325-000
 100' COMMON WATERWAY EASEMENT

SCHAFFER MANAGEMENT COMPANY INC.
 VOLUME 871, PAGE 308 OF OTTAWA COUNTY
 OFFICIAL RECORDS.
 PARCEL NO. 014-11664-24663-000
 (REMAINING LANDS PARCEL 3)

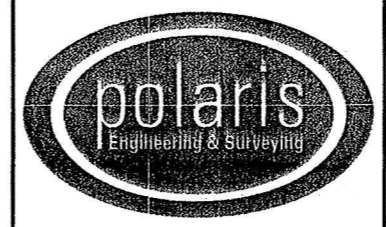
SCHAFFER MANAGEMENT COMPANY INC.
 VOLUME 871, PAGE 308 OF OTTAWA COUNTY OFFICIAL RECORDS.
 PARCEL NO. 014-11664-24663-000
 (REMAINING LANDS PARCEL 2)

ACCESS ROAD VOL 54 PG 19
 RAILROAD SPIKE FOUND AND USED
 GRAVEL BAR SUBD. "C"
 VOLUME 13, PAGE 7-B
 SUBLOT C-7
 SUBLOT C-8
 P.O.B. CONDO PHASE 2 DECLARED LANDS
 CONDO PHASE 2 LIMITED COMMON ELEMENTS NORTH
 REMAINING LANDS PARCEL 1
 REMAINING LANDS PARCEL 2
 REMAINING LANDS PARCEL 3

REV. No.	DATE	CH'K'D BY

DATE: 12/29/07
 SCALE: HOR. 1"=30'
 VERT. _____
 FOLDER: Plats
 FILENAME: Condo Phase 2
 TAB: Condo - 02
 DRAWN: MPS

BAR HARBOR RESERVE
 CONDOMINIUMS
 DANBURY TOWNSHIP - OTTAWA COUNTY - OHIO

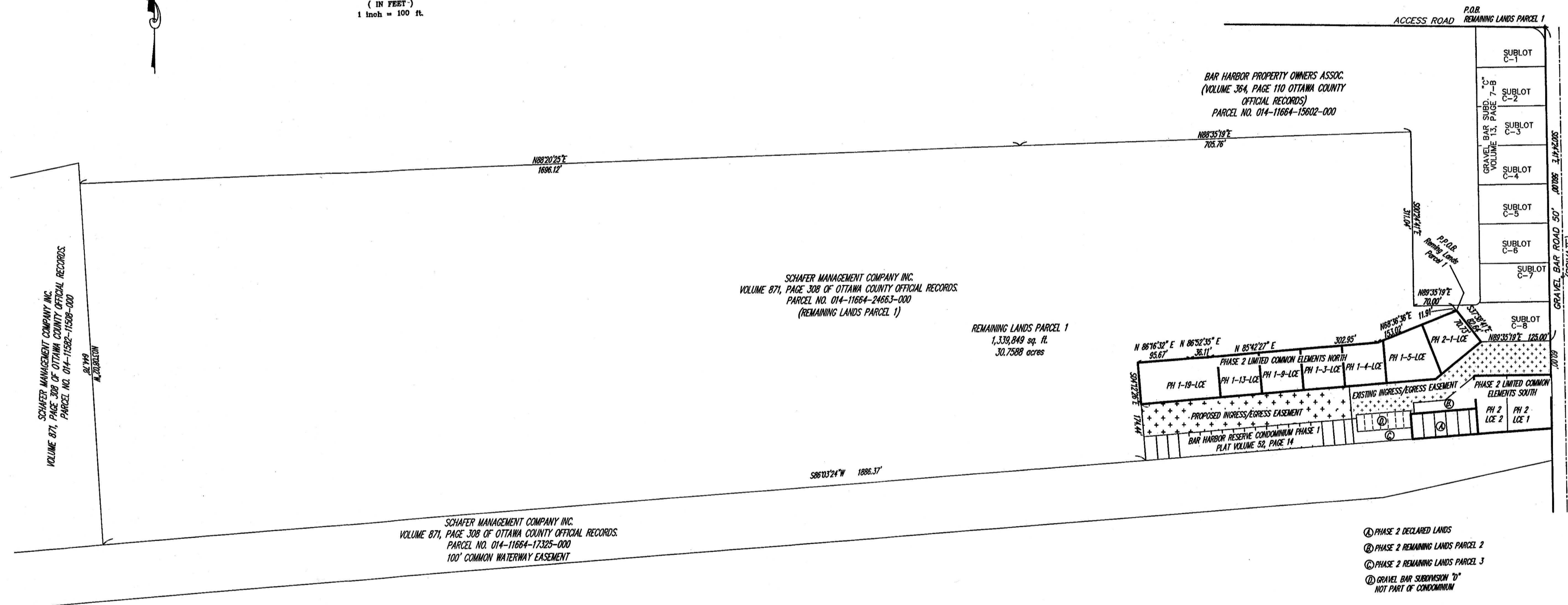
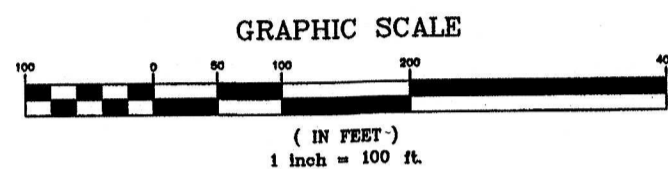


POLARIS ENGINEERING & SURVEYING, INC.
 34600 CHARDON ROAD - SUITE D
 WILLOUGHBY HILLS, OHIO 44094
 (440) 944-4433 (440) 944-3722 (Fax)
 www.polaris-es.com

CONDOMINIUM PHASE 2

CONTRACT No.	
03502	
SHEET	OF
1	2

SECOND AMENDMENT TO DECLARATION OF CONDOMINIUM
 BAR HARBOR RESERVE CONDOMINIUMS
 BEING A PART OF PARCELS 1 AND 2 OF LAND CONVEYED TO SCHAFER MANAGEMENT COMPANY INC. BY DEED
 RECORDED IN VOLUME 871, PAGE 308 OF OTTAWA COUNTY OFFICIAL RECORDS.
 LYING NORTHERLY OF SECTION 2, LOTS 14, 15, AND 16 FIRELANDS SURVEY
 NOW IN THE TOWNSHIP OF DANBURY - OTTAWA COUNTY - STATE OF OHIO
 DECEMBER, 2007 SCALE 1 INCH = 100 FEET
 EXHIBIT A
 GRANTOR: SCHAFER MANAGEMENT COMPANY INC.

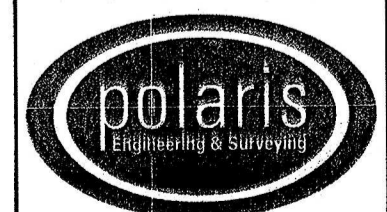


- Ⓐ PHASE 2 DECLARED LANDS
- Ⓑ PHASE 2 REMAINING LANDS PARCEL 2
- Ⓒ PHASE 2 REMAINING LANDS PARCEL 3
- Ⓓ GRAVEL BAR SUBDIVISION "D" NOT PART OF CONDOMINIUM

REV. No.	DATE	CH'K'D BY

DATE: 12/26/07
 SCALE: HOR. 1"=30'
 VERT. --
 FOLDER: Plats
 FILENAME: Condo Phase 2
 TAB: Condo -02
 DRAWN: MPS

BAR HARBOR RESERVE
 CONDOMINIUMS
 DANBURY TOWNSHIP - OTTAWA COUNTY - OHIO



POLARIS ENGINEERING & SURVEYING, INC.
 34600 CHARDON ROAD - SUITE D
 WILLOUGHBY HILLS, OHIO 44094
 (440) 944-4433 (440) 944-3722 (Fax)
 www.polaris-es.com

CONDOMINIUM PHASE 2

CONTRACT No.	
03502	
SHEET	OF
2	2