



1413.95'
1413.95'

part Clinton Eastern Road

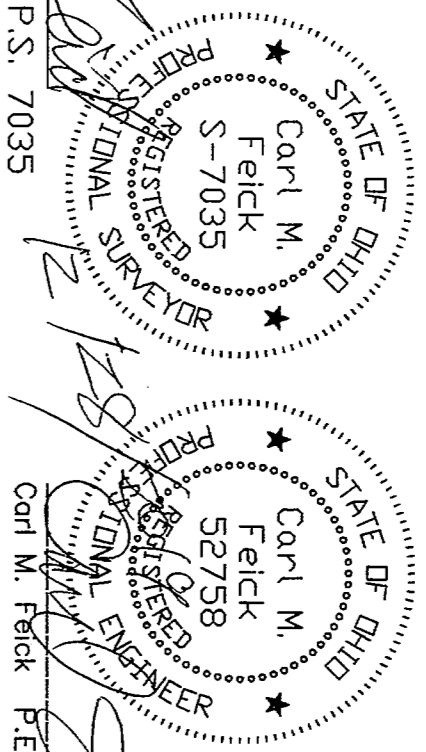
Troopers for this 25th day of March 2020
 Drawn by *Carl M. Feick* Date 03.25.2020 Time 3:34 AM
 Recorded this 25th day of March 2020
 Auditor *Carl M. Feick* Fee \$156.00
 Document # 293338 Vol. 70 PG 14-15
 Date 03.25.2020 Time 3:34 AM
 Fee \$156.00
 Ottawa County Virginia W. Park
 Recorder, Ottawa County Ohio

Surveyor's Certification
 I hereby declare that the drawing accurately reflects the location of improvements and recorded easements to the best of my knowledge and belief.

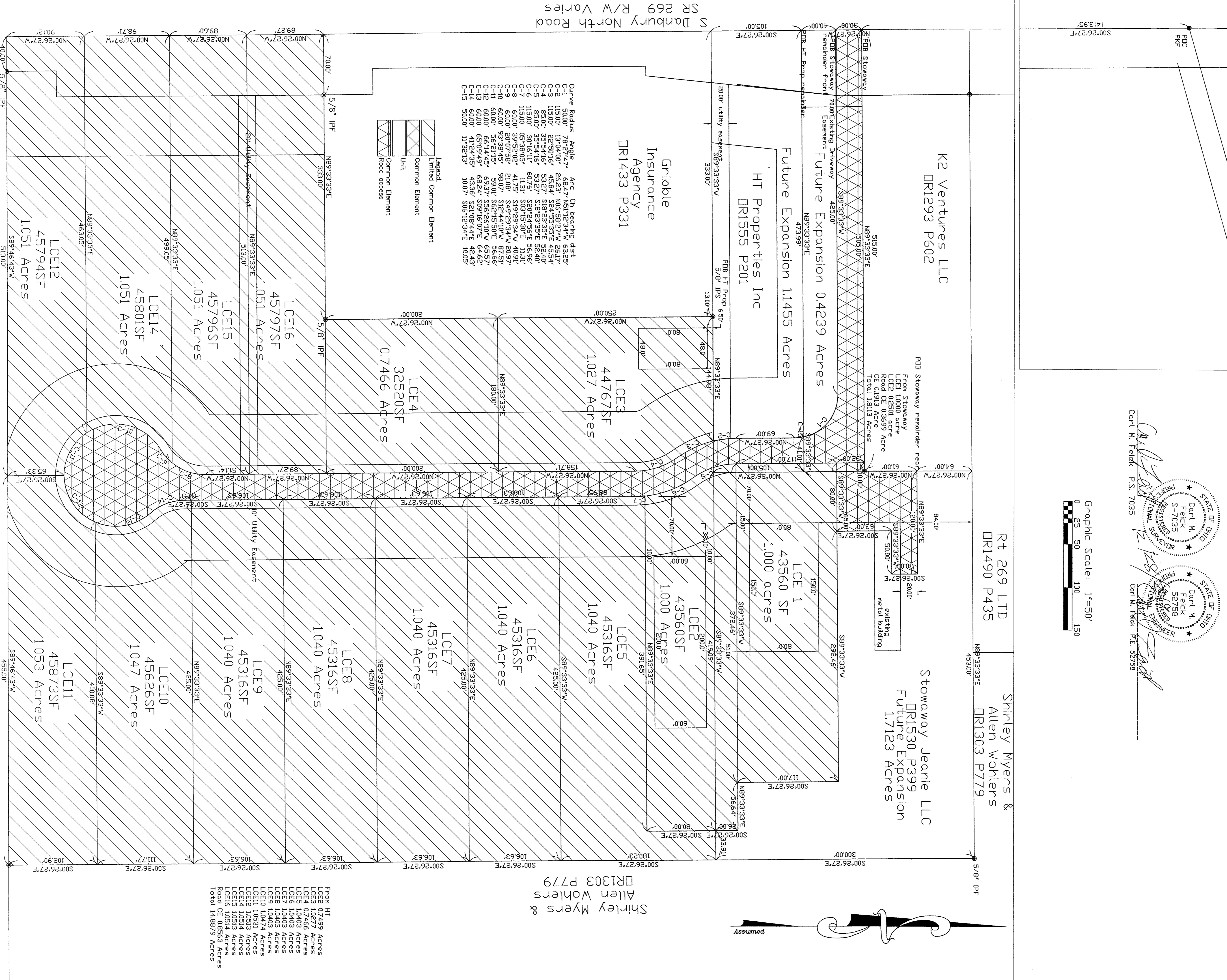
Engineer's Certification
 I hereby declare that the drawing accurately shows each building as built to the best of my knowledge and belief.

Carl M. Feick P.S. 7035
 Carl M. Feick P.E. 52758

Graphic Scale: 1"=50'
 0 25 50 100 150

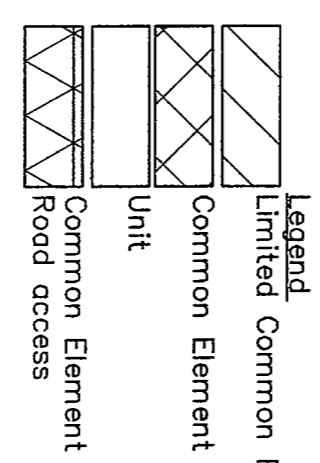


CARL M FEICK, P.E. P.S.
 712 Barchell Road, Carroll, Ohio 44824, 419-656-3016
 DATE: 6/13/2018
 SHEET 1 OF 2
 009 VOL: Downward
 DRAWN BY: CMF
 SR 269 Section 4 Lot 20 Danbury TWP, Ottawa Co, Ohio
 Revised 12/16/2018 road names by CMF
 Revised 12/26/2018 for legal by CMF
 Revised 8/8/2019 lots and utility easo by CMF
 Revised 8/21/2019 Renumbered lots by CMF
 Reminders 11/05/2019 by CMF



Curve Radlus Angle Arc Ch bearing dist

C-1	5000'	78°27'47"	68.47'	N51°12'34"W	63.829'
C-2	11300'	13°04'00"	26.23'	N06°55'22"W	26.117'
C-3	18500'	35°54'16"	53.27'	S18°23'35"E	52.40'
C-4	8500'	33°54'16"	53.27'	S18°23'35"E	52.40'
C-5	11500'	30°16'11"	60.76'	S20°24'56"E	56.96'
C-6	11500'	09°38'05"	11.31'	S03°15'30"E	11.31'
C-7	6000'	39°52'02"	41.75'	S19°29'34"W	40.91'
C-8	6000'	20°07'88"	21.08'	S49°29'34"W	20.97'
C-9	6000'	39°52'02"	41.75'	S19°29'34"W	40.91'
C-10	6000'	39°52'02"	41.75'	S19°29'34"W	40.91'
C-11	6000'	26°14'45"	31.44'	S12°14'45"E	31.32'
C-12	6000'	26°14'45"	31.44'	S12°14'45"E	31.32'
C-13	6000'	65°09'49"	68.84'	S09°16'07"E	64.66'
C-14	6000'	41°24'35"	43.36'	S21°08'44"E	42.43'
C-15	5000'	11°32'13"	100.7'	S06°12'34"E	100.5'



From HT
 LCE3 10277 Acres
 LCE4 10277 Acres
 LCE5 10403 Acres
 LCE6 10403 Acres
 LCE7 10403 Acres
 LCE8 10403 Acres
 LCE9 10403 Acres
 LCE10 10474 Acres
 LCE11 10531 Acres
 LCE12 10514 Acres
 LCE13 10514 Acres
 LCE14 10514 Acres
 LCE15 10514 Acres
 LCE16 10514 Acres
 Road CE 08563 Acres
 Total 148879 Acres

Shirley Myers & Allen Wolhers
 DR1303 P779

Robert & Janet Hennig
 DR1523 P446

S Danbury North Road
 SR 269 R/W Varies