



OTTAWA COUNTY BENCHMARK DATA SHEET



DAN 257-1.7

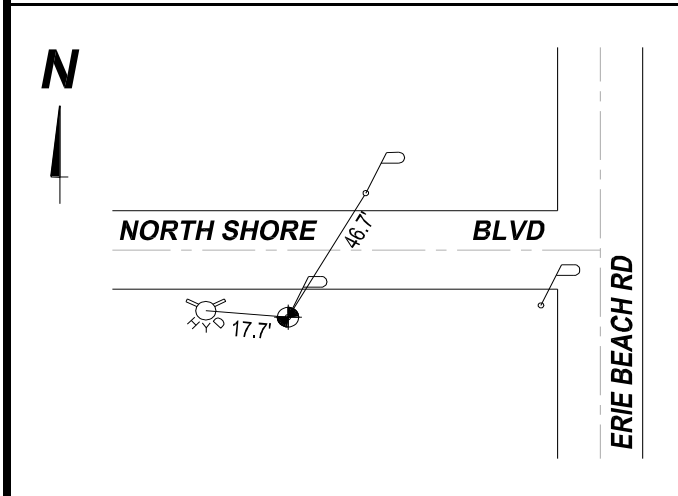
Township	Section	Town	Range	Type of Monument
Danbury	SEC 1 LOT 8			Set Railroad Spike in Power Pole
Set By	Shot By	Calculated	Calculated By	Published
OCE	M. J. Wittman, P.S., J. Allen	March 14, 2012	M. J. Wittman, P.S.	March 16, 2012

Location

South side of Northshore Blvd., T.R. #257, west of Erie Beach Rd., T.R. #221
(Second pole on south side of Northshore Blvd., west of Erie Beach Rd.)

Vertical Control		
Vertical Datum	Method	Elevation (U.S. Survey Feet)
NAVD 88	GPS / LEVEL	604.67

Horizontal Control			
Horizontal Datum	Zone	Northing	Easting
Method	Latitude	Longitude	
Geoid	Scale Factor	Convergence	



- NOTES:**
1. Monument set: February 7, 2012
 2. Data Collected: 2-7-12, 2-16-12, 3-2-12, 3-13-12
 3. Not suitable for GPS
 4. Corrected elevation error 4-20-17 (MJW)