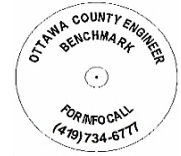


# OTTAWA COUNTY BENCHMARK DATA SHEET



## DAN 257-1.7

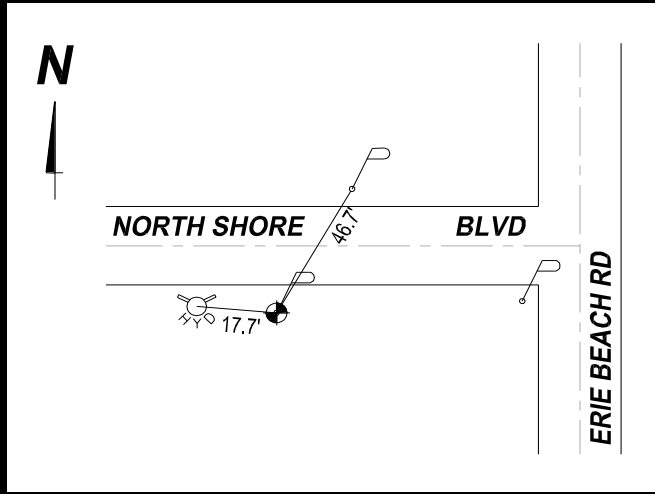
<b>Township</b>	<b>Section</b>	<b>Town Range</b>	<b>Type of Monument</b>	
Danbury	SEC 1 LOT 8		Set Railroad Spike in Power Pole	
<b>Set By</b>	<b>Shot By</b>	<b>Calculated</b>	<b>Calculated By</b>	<b>Published</b>
OCE	M. J. Wittman, P.S., J. Allen	March 14, 2012	M. J. Wittman, P.S.	March 16, 2012

**Location**

South side of Northshore Blvd., T.R. #257, west of Erie Beach Rd., T.R. #221  
(Second pole on south side of Northshore Blvd., west of Erie Beach Rd.)

Vertical Control		
<b>Vertical Datum</b>	<b>Method</b>	<b>Elevation (U.S. Survey Feet)</b>
NAVD 88	GPS / LEVEL	604.64

Horizontal Control			
<b>Horizontal Datum</b>	<b>Zone</b>	<b>Northing</b>	<b>Easting</b>
<b>Method</b>	<b>Latitude</b>	<b>Longitude</b>	
<b>Geoid</b>	<b>Scale Factor</b>	<b>Convergence</b>	



- NOTES:**
1. Monument set: February 7, 2012
  2. Data Collected: 2-7-12, 2-16-12, 3-2-12, 3-13-12
  3. Not suitable for GPS