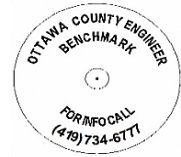




# OTTAWA COUNTY BENCHMARK DATA SHEET



## DAN 138-0.7

Township	Section	Town	Range	Type of Monument
Danbury	SEC 2 LOT 11			3 1/4" Domed Bronze Disk in Concrete (OCE Spec. BM-1)
Set By	Shot By	Calculated	Calculated By	Published
OCE / OCHD	J. Allen	March 8, 2012	M. J. Wittman, P.S.	March 16, 2012

### Location

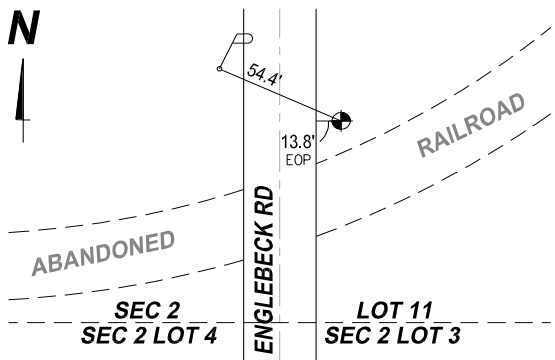
Northwest corner of the intersection of Englebeck Rd., T.R. #138 & the abandoned Lakeside & Marblehead Railroad

### Vertical Control

Vertical Datum	Method	Elevation (U.S. Survey Feet)
NAVD 88	GPS	585.24

### Horizontal Control

Horizontal Datum	Zone	Northing	Easting
NAD 83 CORS 96	OHIO NORTH 3401	675,030.561	1,891,531.071
Method	Latitude	Longitude	
GPS / CORPSCON	41° 31' 08.86162" N	82° 46' 51.83288" W	
Geoid	Scale Factor	Convergence	
GEOID 09	0.999970132	- 00° 11' 04.72393"	



#### **NOTES:**

1. Monument set: December 22, 2011
2. Data Collected: 2-7-12, 2-16-12, 3-2-12