

OTTAWA COUNTY ENGINEERS OFFICE

REFERENCE NO. 6-6-13-G
 SW CORNER POST SECTION 6
 CLAY TWP.
SHEET 1 OF 1.

ROUTE: C-2 FOSTORIA RD.
 @ T-4 CAMPER RD.

TOWNSHIP: CLAY

SECTION: 6

T 6 **NR** 13 **E.**

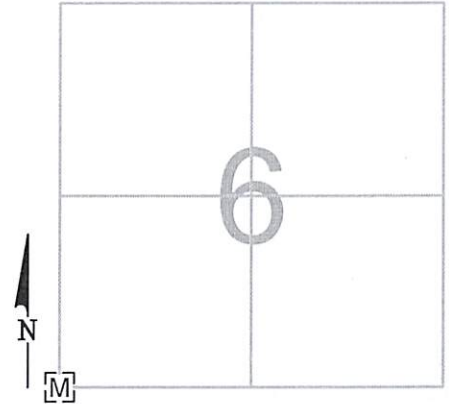
NORTHING:

EASTING:

DATUM:

PERSONNEL:
 M. WITTMAN, P.S.
 J. ALLEN

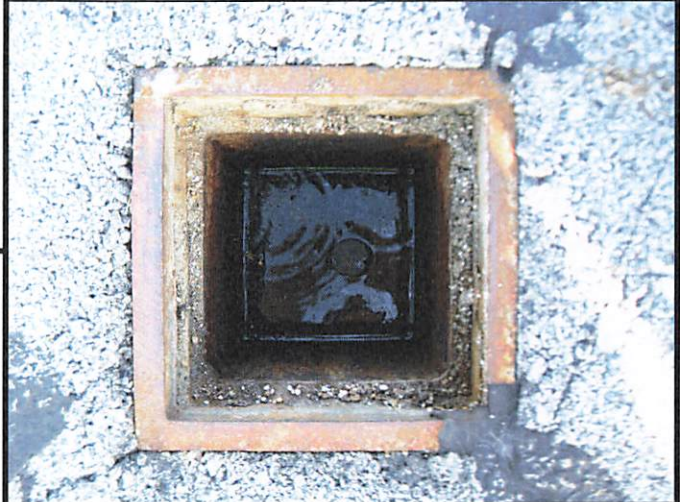
DATE / WEATHER / TEMP:
 NOVEMBER 10, 2014
 SUNNY - SE
 50° F



MONUMENT INFORMATION

MONUMENT TYPE: FD. 1" Ø IRON PIN IN MON BOX
 ON SURFACE - BELOW:
 LEFT - CL PAV'T - RIGHT: 4.0'

8" x 9" x 14" RED GRANITE STONE PER SANDUSKY
 COUNTY RECORDS



MISC. INFORMATION

FD. 8" x 9" x 14" RED GRANITE STONE 8" BELOW ROAD
 SURFACE ON 4-7-1992, STONE WAS RESET 40" BELOW
 SURFACE WITH PIN AND MONUMENT BOX SET OVER BY
 SANDUSKY COUNTY - PER SANDSUKY COUNTY RECORDS
 - MONUMENT INDEX MAP COORDINATE A-21. IRON PIN IS
 0.67' WEST OF COUNTY LINE.

THIS IS A CLOSING CORNER

