

# OTTAWA COUNTY ENGINEERS OFFICE

REFERENCE NO. 4-6-13-G  
SW CORNER SECTION 4  
CLAY TWP.  
SHEET 1 OF 1.

ROUTE: T-4 CAMPER RD.  
@ T-53 REIMAN RD.

TOWNSHIP: CLAY

SECTION: 4

T 6 NR 13 E.

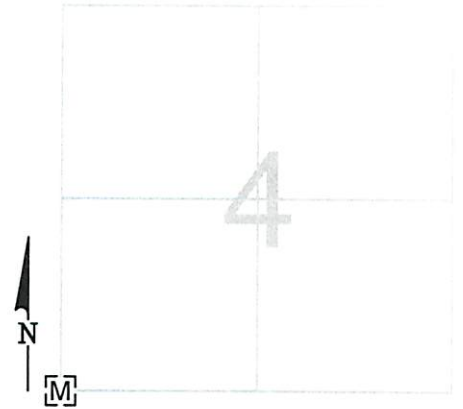
PERSONNEL:  
J. ALLEN  
M. ULLRICH  
S. ULLRICH

NORTHING:

EASTING:

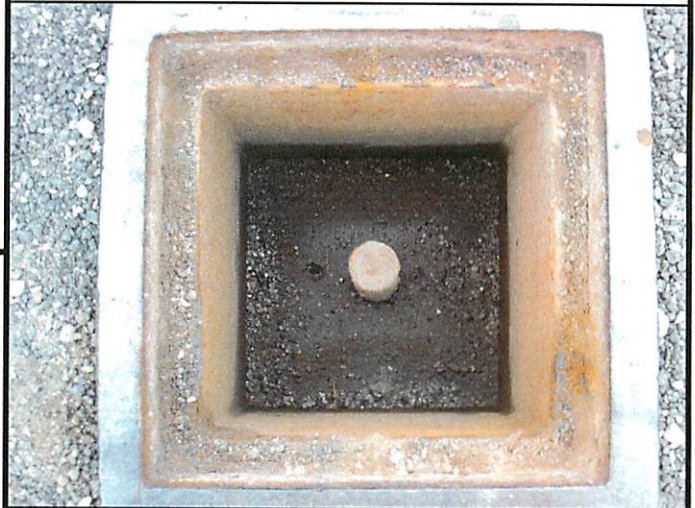
DATUM:

DATE / WEATHER / TEMP:  
AUGUST 28, 2008  
CLOUDY  
65° F



## MONUMENT INFORMATION

MONUMENT TYPE: FD. 1" Ø IRON PIN IN  
MONUMENT BOX  
ON SURFACE - BELOW: 0.41'  
LEFT - CL PAV'T - RIGHT: 2.0' (REIMAN RD.)



## MISC. INFORMATION

