

OTTAWA COUNTY ENGINEERS OFFICE

REFERENCE NO. 36-7-13-H
SOUTH QUARTER POST SEC. 36
CLAY TWP.
SHEET 1 OF 1.

ROUTE: STATE ROUTE #163

TOWNSHIP: CLAY

SECTION: 36

T 7 NR 13 E.

PERSONNEL:

M. WITTMAN, P.S.
M. BROUGH
C. MILLER
D. HOHMAN, P.S. - ODOT
T. ROUSOS - ODOT

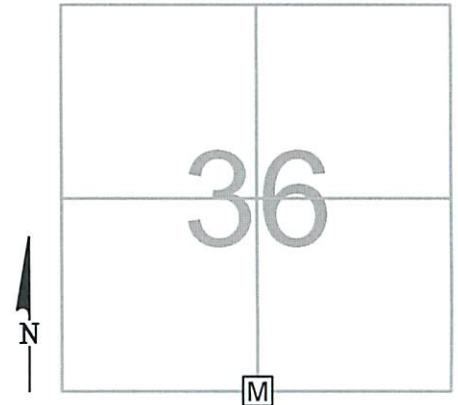
NORTHING:

EASTING:

DATUM:

DATE / WEATHER / TEMP:

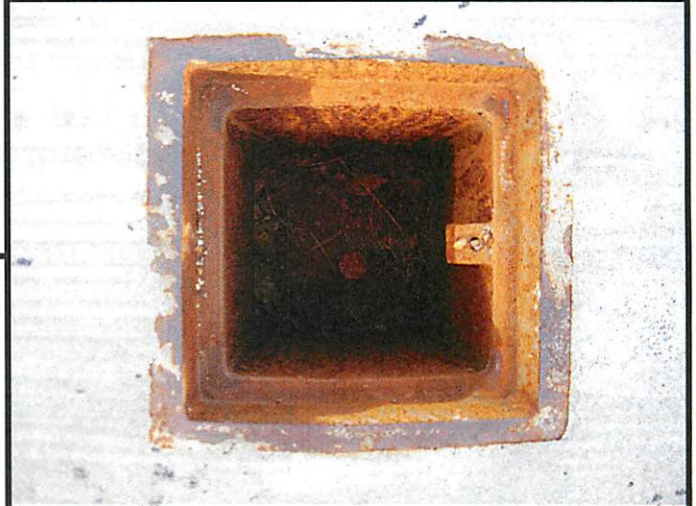
MAY 1, 2013
SUNNY - S, SE
83° F



MONUMENT INFORMATION

MONUMENT TYPE: SET 1" Ø IRON PIN IN MON BOX
ON SURFACE - BELOW:
LEFT - CL PAV'T - RIGHT: 2.85'

8-28-13:
SET 1" Ø X 36" LONG IRON PIN IN FLOODED MASONRY
SAND IN 6" Ø PVC IN MONUMENT BOX WITH ODOT AND
SHELLY CO.



MISC. INFORMATION

FD PK NAIL AND SHINER ON SURFACE, TIED W/ X-TIES AND DUG
FOR STONE. FD PK NAIL AND SHINER 0.30' BELOW SURFACE, NAIL
AND SHINER WAS 0.02' E AND 0.06' N OF SURFACE NAIL. NO
STONE OR OTHER TYPE OF MONUMENTATION FOUND. ACCEPTED
AND USED ODOT NAIL AND SHINER ON SURFACE TO SET IRON PIN
IN MONUMENT BOX.

AUGUST 28, 2013

SET 1" Ø IRON PIN IN
MONUMENT BOX

