

# OTTAWA COUNTY ENGINEERS OFFICE

REFERENCE NO. 36-7-13-B  
NORTH QUARTER POST SEC. 36  
CLAY TWP.

SHEET 1 OF 1.

PERSONNEL:  
M. WITTMAN, P.S.  
J. ALLEN

DATE / WEATHER / TEMP:  
OCTOBER 23, 2008  
SUNNY SE  
52° F

ROUTE: T-40 HOLTS - EAST RD.

TOWNSHIP: CLAY

SECTION: 36

T 7 NR 13 E.

NORTHING:

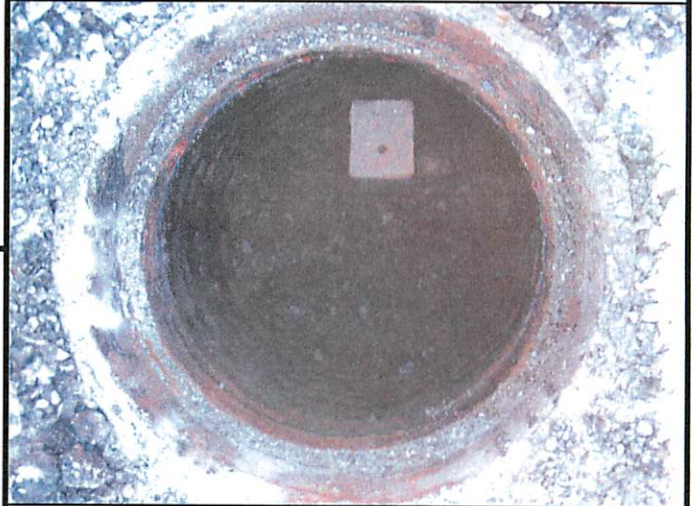
EASTING:

DATUM:



## MONUMENT INFORMATION

MONUMENT TYPE: FD 1" SQ. IRON PIN IN WELL  
CASING  
ON SURFACE - BELOW: 0.10'  
LEFT - CL PAV'T - RIGHT: 5.0'



## MISC. INFORMATION

