

# OTTAWA COUNTY ENGINEERS OFFICE

REFERENCE NO. 36-7-13-A  
NW CORNER POST SEC. 36  
CLAY TWP.  
SHEET 1 OF 1.

PERSONNEL:  
M. WITTMAN, P.S.  
J. ALLEN  
J. TIMMONS

DATE / WEATHER / TEMP:  
JULY 7, 2016  
SUNNY  
86° F - HUMID

ROUTE: T-214 OPFER-LENTZ RD.  
@ T-40 HOLTS-EAST RD.

TOWNSHIP: CLAY

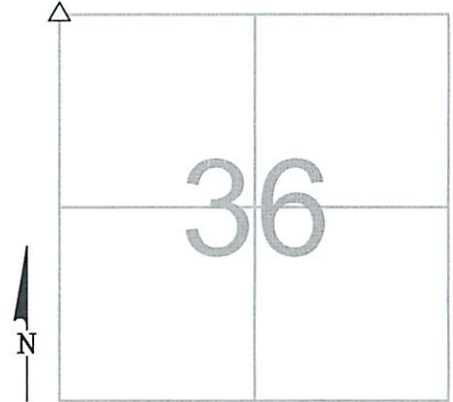
SECTION: 36

T 7 NR 13 E.

NORTHING:

EASTING:

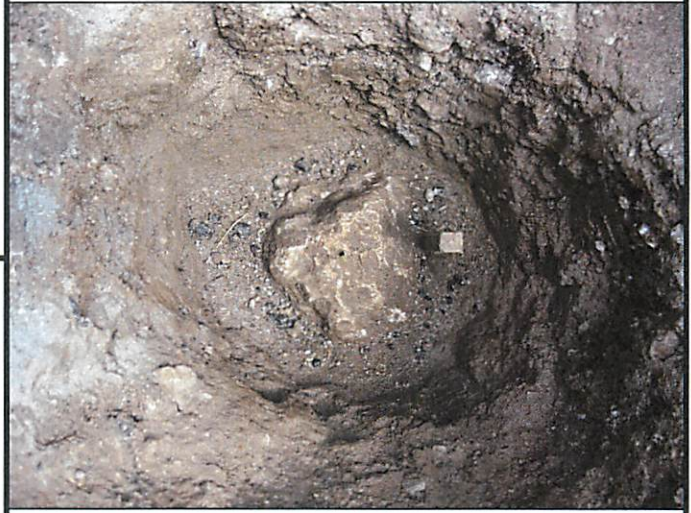
DATUM:



## MONUMENT INFORMATION

MONUMENT TYPE: FD 7-1/2" x 8-1/2" LIMESTONE  
ON SURFACE - BELOW: 1.96'  
LEFT - CL PAV'T - RIGHT: 5.40' (OPFER-LENTZ RD.)  
LEFT - CL PAV'T - RIGHT: 3.50' (HOLTS-EAST RD.)

FD DRILL HOLE IN STONE, USED DRILL HOLE.



## MISC. INFORMATION

FD RR SPIKE 0.23' BELOW SURFACE, TIED W/ X-TIES  
AND DUG FOR STONE. FD 1" SQUARE WOOD HUB  
ON EAST SIDE OF STONE.

RR SPIKE WAS 0.08' SOUTH AND 0.12' EAST OF  
DRILL HOLE IN STONE.

JULY 7, 2016

SET 1" SQUARE IRON PIN  
IN MONUMENT BOX OVER  
STONE

