

OTTAWA COUNTY ENGINEERS OFFICE

REFERENCE NO. 35-7-13-H
SOUTH QUARTER POST SEC. 35
CLAY TWP.
SHEET 1 OF 1.

ROUTE: STATE ROUTE #163

TOWNSHIP: CLAY

SECTION: 35

T 7 NR 13 E.

PERSONNEL:

M. WITTMAN, P.S.
J. ALLEN
S. CODER, P.S. - ODOT
J. RHODES - ODOT
J. LAU - ODOT

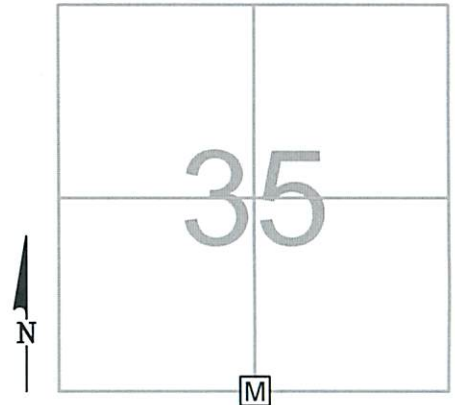
NORTHING:

EASTING:

DATE / WEATHER / TEMP:

APRIL 29, 2013
OVERCAST - SW
68° F

DATUM:

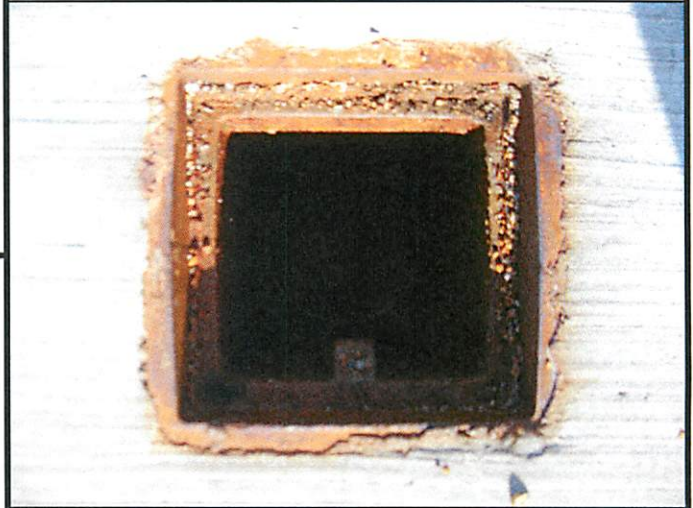


MONUMENT INFORMATION

MONUMENT TYPE: SET 1" Ø IRON PIN IN MON BOX
ON SURFACE - BELOW:
LEFT - CL PAV'T - RIGHT:

8-28-13:

SET 1" Ø X 36" LONG IRON PIN IN FLOODED MASONRY
SAND IN 6" Ø PVC IN MONUMENT BOX WITH ODOT AND
SHELLY CO.

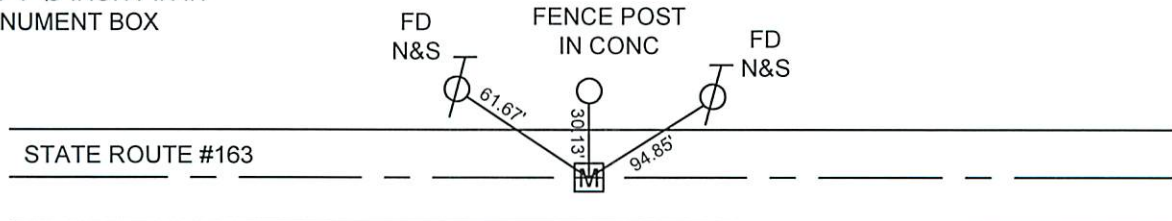


MISC. INFORMATION

FD NAIL AND SHINER ON SURFACE, TIED W/ X-TIES AND DUG FOR
TILE PER RECORD. FD NAIL AND SHINER 0.10' BELOW SURFACE,
NAIL AND SHINER WAS 0.06' W AND 0.07' N OF SURFACE NAIL. FD
NAIL SHAFT 0.43' BELOW SURFACE, SHAFT WAS 0.02' W AND 0.09' N
OF SURFACE NAIL. DUG THROUGH ORIGINAL CONCRETE ROAD
INTO CLAY, DID NOT FIND TILE. ACCEPTED AND USED ODOT NAIL
AND SHINER ON SURFACE TO SET IRON PIN IN MONUMENT BOX.

AUGUST 28, 2013

SET 1" Ø IRON PIN IN
MONUMENT BOX



5/8" IP SET
BY ODOT