

# OTTAWA COUNTY ENGINEERS OFFICE

REFERENCE NO. 35-7-13-F  
 EAST QUARTER POST SEC. 35  
 CLAY TWP.  
 SHEET 1 OF 1.

ROUTE: T-214 OPFER-LENTZ RD.  
 @ T-231 WHITNEY RD.

TOWNSHIP: CLAY

SECTION: 35

T 7 NR 13 E.

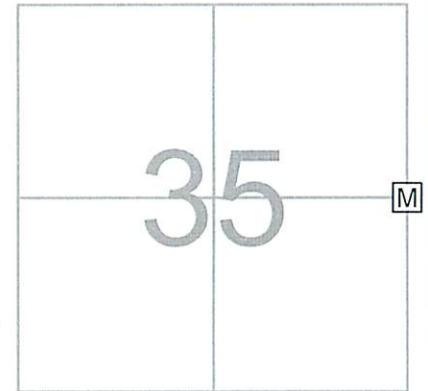
NORTHING:

EASTING:

DATUM:

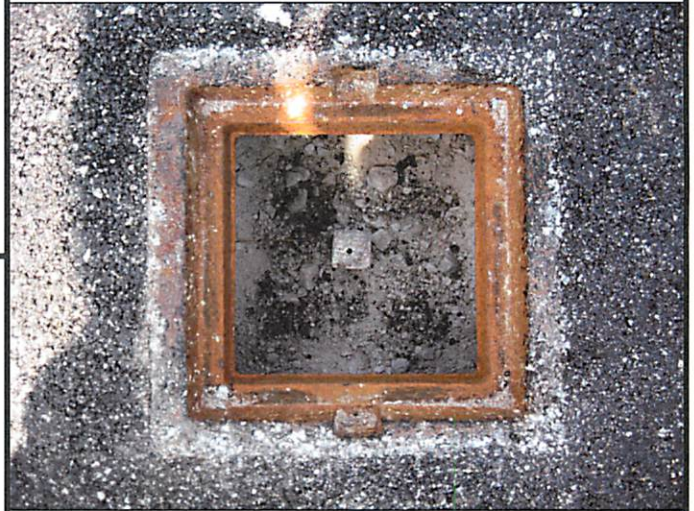
PERSONNEL:  
 M. WITTMAN, P.S.  
 J. ALLEN  
 J. TIMMONS

DATE / WEATHER / TEMP:  
 JULY 29, 2016  
 SUNNY  
 90° F - HUMID



### MONUMENT INFORMATION

MONUMENT TYPE: SET 1" SQ. IRON PIN IN MON BOX  
ON SURFACE - BELOW:  
LEFT - CL PAV'T - RIGHT: 6.9' (OPFER-LENTZ RD.)  
LEFT - CL PAV'T - RIGHT: 4.0' (WHITNEY RD.)



### MISC. INFORMATION

JULY 7, 2016 - FD RR SPIKE 0.25' BELOW SURFACE, TIED W/ X-TIES AND DUG FOR STONE. A STONE WAS NOT FOUND. TOOK SURVEY SHOTS AROUND SECTIONS 35 AND 36 AND DETERMINED RR SPIKE WAS POINT BASED ON SURVEY OF RECORD IN COUNTY ENGINEER'S OFFICE. RETURNED ON JULY 29, 2016 AND SET 1" SQUARE IRON PIN IN MONUMENT BOX IN PLACE OF RR SPIKE.

JULY 29, 2016

SET 1" SQUARE IRON PIN  
 IN MONUMENT BOX

