

OTTAWA COUNTY ENGINEERS OFFICE

REFERENCE NO. 33-7-13-D
 WEST QUARTER POST SEC. 33
 CLAY TWP.
 SHEET 1 OF 1.

ROUTE: T-53 REIMAN RD.

TOWNSHIP: CLAY

SECTION: 33

T 7 NR 13 E.

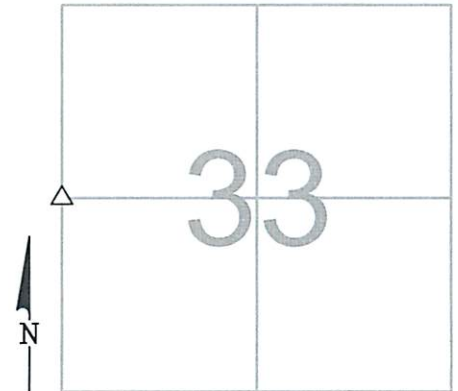
PERSONNEL:
 M. WITTMAN, P.S.
 J. ALLEN

NORTHING:

EASTING:

DATE / WEATHER / TEMP:
 JUNE 28, 2016
 PTLY SUNNY - W
 72° F

DATUM:



MONUMENT INFORMATION

MONUMENT TYPE: FD 7-1/2" x 6-1/2" LIMESTONE
 ON SURFACE - BELOW: 1.40'
LEFT - CL PAV'T - RIGHT: 1.30'

FD DRILL HOLE IN STONE. USED DRILL HOLE.

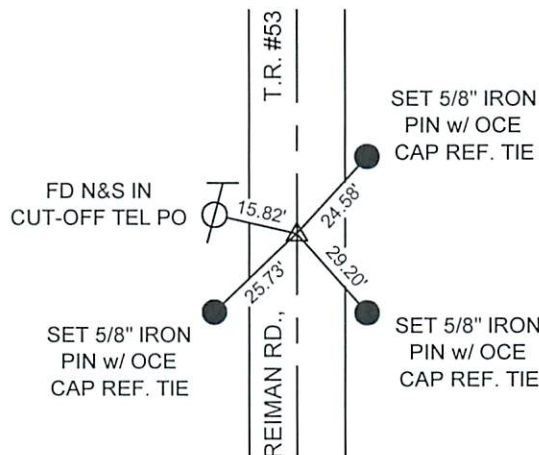


MISC. INFORMATION

FD PK NAIL 0.13' BELOW SURFACE, TIED W/X-TIES
 AND DUG FOR STONE. PK NAIL WAS 0.20' SOUTH
 AND 0.03' EAST OF DRILL HOLE.

JUNE 28, 2016

SET 1" SQUARE IRON PIN
 IN MONUMENT BOX OVER
 STONE



** ALL TIE DIST
 TO SET 5/8"
 IRON PINS
 ARE PLUMB