

OTTAWA COUNTY ENGINEERS OFFICE

REFERENCE NO. 32-7-13-G
 SW CORNER POST SECTION 32
 CLAY TWP.
SHEET 1 OF 1.

ROUTE: T-54 BILLMAN RD.
 @ STATE ROUTE #163

TOWNSHIP: CLAY

SECTION: 32

T 7 **NR** 13 **E.**

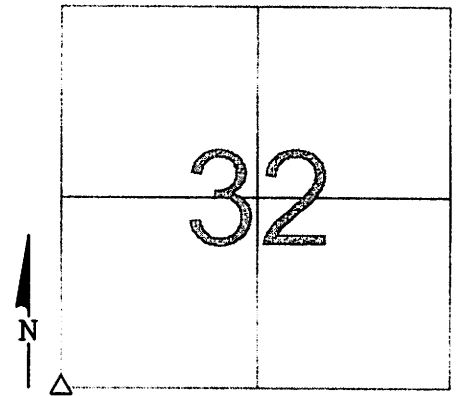
NORTHING:

EASTING:

DATUM:

PERSONNEL:
 R. NUHFER, P.S.
 M. BROUGH
 VARIOUS ODOT
 PERSONNEL

DATE / WEATHER / TEMP:
 JULY 19, 2001
 SUNNY - HAZE
 90° F



MONUMENT INFORMATION

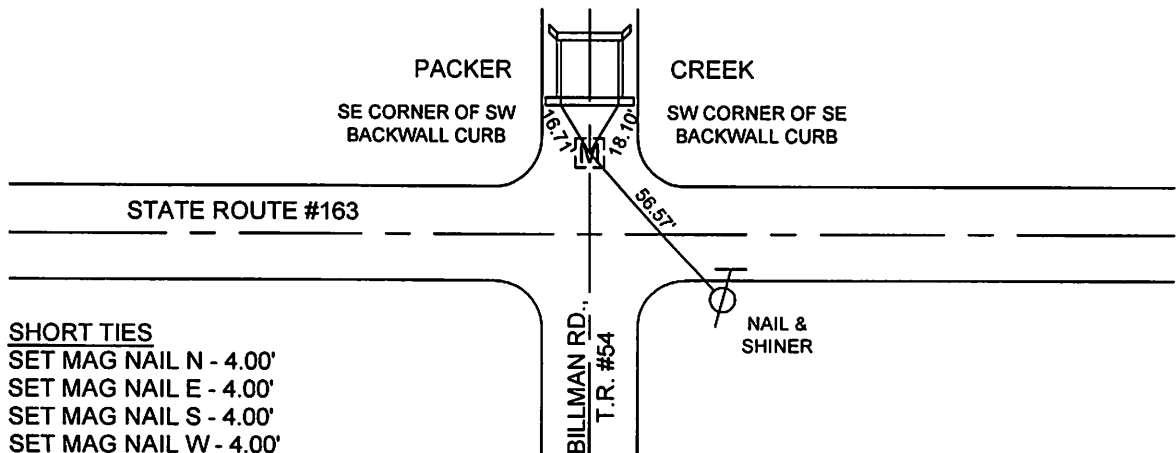
MONUMENT TYPE: FD BLACK MARBLE GRANITE
 ON SURFACE - BELOW: 1.6'
 LEFT - CL PAV'T - RIGHT:
 ROUND STONE: 12" DIAMETER

MISC. INFORMATION

FOUND RAILROAD SPIKE 0.58' BELOW SURFACE -
 REMOVED RAILROAD SPIKE. RAILROAD SPIKE WAS
 4.5' SOUTH AND 0.5' EAST OF STONE.

1" ROUND IRON PIN IN MOUMENT BOX SET PER 2002
 ODOT S.R. #163 RE-LOCATION PLANS RECORDED 4-23-02 IN
 THE OTTAWA COUNTY RECORDERS OFFICE.

PHOTO OF STONE NOT AVAILABLE



SHORT TIES
 SET MAG NAIL N - 4.00'
 SET MAG NAIL E - 4.00'
 SET MAG NAIL S - 4.00'
 SET MAG NAIL W - 4.00'